

Converting Colors

CIELCh(83, 7.483, 11.974)

Have a look what the booklet for
CIELCh(83, 7.483, 11.974) contains.

CIELCh(83, 7.476, 11.825)	3
<i>Conversions</i>	4
<i>Details</i>	6
<i>Harmonies</i>	11
<i>Previews</i>	20
<i>Color Blindness Simulation</i>	23
<i>CSS Examples</i>	26

Color

CIELCh(83, 7.476, 11.825)

Conversions

Conversions Part 1

Format	Color
Hex	DECACC
RGB	222, 202, 204
RGB Percent	87%, 79%, 80%
CMY	0.1292, 0.2076, 0.1998
CMYK	0.00, 0.09, 0.08, 0.13
HSL	354°, 23%, 83%
HSV	354°, 9%, 87%
XYZ	62.1759, 62.1629, 65.8787
YIQ	208.2080, 11.2780, 4.8620

Conversions

Conversions Part 2

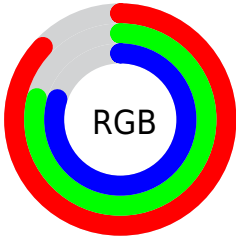
Format	Color
RYB	222, 202, 204
Decimal	14600908
CIELab	83.00, 7.32, 1.53
CIElCh	83, 7.476, 11.825
Yxy	62.1629, 0.3269, 0.3268
Android (android.graphics.Color)	4292790988 (0xFFDECACC)
YUV	208.2080, -2.0745, 12.0956
Hunter-Lab	78.8435, 2.7889, 5.6499

Details

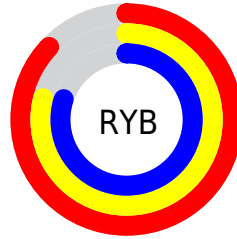
The CIELCh color **83, 7.476, 11.825** is a light color, and the websafe version is hex **CCCCCC**. A complement of this color would be **87, 7.136, 190.549**, and the grayscale version is **84, 0.010, 296.813**.

A 20% lighter version of the original color is **100, 0.012, 296.813**, and **63, 7.549, 11.620** is the 20% darker color. If you saturate the color by 10%, you get **77, 16.297, 12.880**, and if you desaturate by 10%, it is **89, 0.795, 191.820**.

Distribution



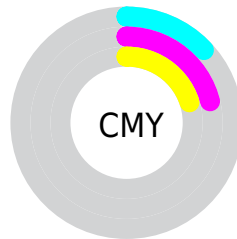
- Red (87%)
- Green (79%)
- Blue (80%)



- Red (87%)
- Yellow (79%)
- Blue (80%)



- Cyan (0%)
- Magenta (9%)
- Yellow (8%)
- Black (13%)

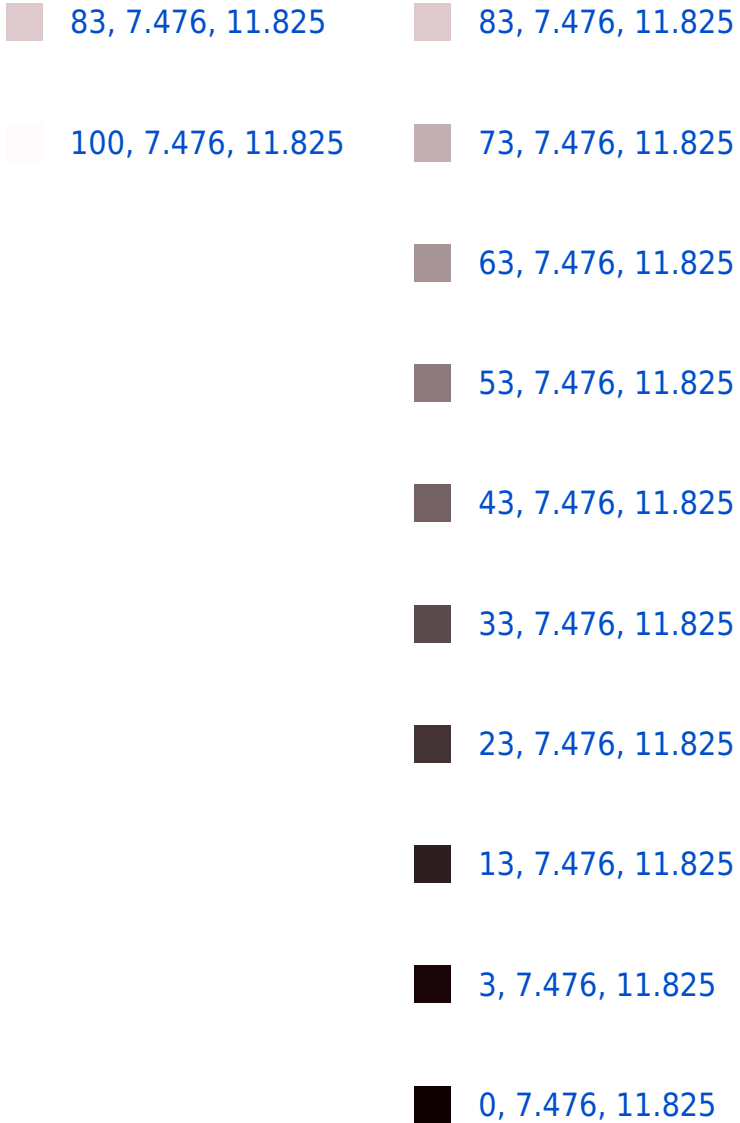


- Cyan (13%)
- Magenta (21%)
- Yellow (20%)

Brightness & Saturation Gradients

These gradients show how the CIELCh color 83, 7.476, 11.825 changes by changing the brightness by 10 percent. The first figure shows a shift by +10% for each color and the second figure -10%.

Similar to the brightness gradients but the following saturation gradients show a change of the CIELCh color 83, 7.476, 11.825 by changing the saturation by 10% instead.



83, 7.476, 11.825

83, 7.476, 11.825

77, 16.297, 12.880

89, 0.795, 191.820

71, 25.650, 14.123

95, 8.526, 190.468

66, 35.450, 15.670

98, 11.137,
198.762

61, 45.527, 17.628

56, 55.615, 20.126

52, 65.377, 23.292

49, 74.469, 27.190

47, 82.584, 31.668

47, 89.304, 36.035

Harmonies

Complementary

The Complementary color scheme is a pair of colors which are on the opposite of each other on the color wheel.



83, 7.476, 11.825



87, 7.136, 190.549

Rectangle

The Rectangle color scheme consists of four colors that form a rectangle on the color wheel.



83, 7.476, 11.825



83, 7.476, 61.825



83, 7.476, 191.825



83, 7.476, 241.825

Sweetspot

The Sweet Spot groups the original color and five complimentary colors.



83, 7.474, 11.839



98, 2.732, 11.169



83, 12.432, 322.131



52, 2.076, 11.285



0, 0.000, 0.000



53, 0.007, 296.813

Same Dimension

The Same Dimension uses a secret algorithm to generate beautiful new colors.



83, 7.474, 11.839



93, 10.284, 12.045



85, 6.100, 62.902



44, 4.760, 11.883



36, 74.940, 35.690



6, 25.347, 16.731

Inverse Universe

The Inverse Universe completely reimagines the original color for something new.



83, 7.474, 11.839



93, 10.284, 12.045



85, 5.888, 244.976



44, 4.760, 11.883



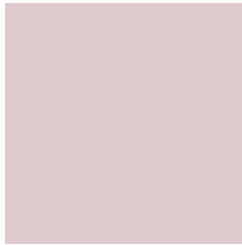
36, 74.940, 35.690



6, 25.347, 16.731

Previews

White Background



This preview shows how the CIELCh color 83, 7.476, 11.825 looks on a white background.

Color Contrast Check

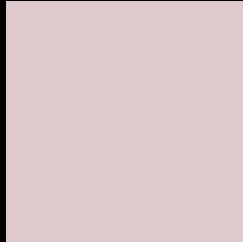
Large Text (above 18pt) WCAG AA × Fail

Any Text WCAG AA × Fail

Large Text (above 18pt) WCAG AAA × Fail

Any Text WCAG AAA × Fail

Black Background



This preview shows how the CIELCh color 83, 7.476, 11.825 looks on a black background.

Color Contrast Check

Large Text (above 18pt) WCAG AA ✓ Pass

Any Text WCAG AA ✓ Pass

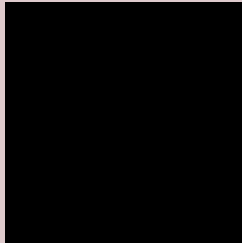
Large Text (above 18pt) WCAG AAA ✓ Pass

Any Text WCAG AAA ✓ Pass

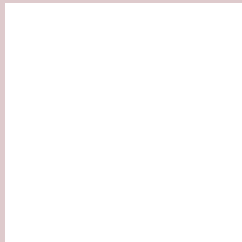
If you want to check with other color combinations, try the [Color Contrast Checker](#).

CIELCh 83, 7.476, 11.825

Background



This preview shows how black text looks on a background with the CIELCh color 83, 7.476, 11.825.



This preview shows how white text looks on a background with the CIELCh color 83, 7.476, 11.825.

Color Blindness Simulation

Color vision deficiency is a very complex topic, and I could not describe the different causes any better than Wikipedia does, so if you want to learn more, you should check out their [article about color blindness](#).

Dichromacy



Original Color

83, 7.476, 11.825

Protanopia

83, 1.460, 19.128

Deuteranopia

83, 10.244, 8.322



Tritanopia
83, 12.171, 336.396

Trichromacy



Original Color
83, 7.476, 11.825

Protanomaly
83, 3.301, 19.484

Deuteranomaly
83, 9.039, 10.008

Tritanomaly
83, 9.937, 344.435

Monochromacy



Original Color
83, 7.476, 11.825

Achromatopsia
83, 0.010, 296.813

Achromatomaly
83, 2.617, 7.773

CSS Examples

Text

The CSS property to change the color of the text to CIELCh 83, 7.476, 11.825 is called "color". The color property can be set on classes, ids or directly on the HTML element.

This example shows how text in the color `rgb(222, 202, 204)` looks like.

```
.text, #text, p{  
    color:rgb(222, 202, 204)  
}
```

If you want to add a text shadow in that color use the text-shadow property, you can generate a text shadow directly with our [CSS Text Shadow Generator](#).

Here you see how black text with a 4 pixel rgb(222, 202, 204) colored shadow looks like.

```
.shadow{ text-shadow: 4px 4px 2px rgb(222, 202, 204) }
```

Border

The CSS property to change the border of an element to CIELCh 83, 7.476, 11.825 is called "border". The border property can be set on classes, ids or directly on the HTML element.

This example shows the color as border, it can be applied via the CSS property "border" or "border-color".

```
.border, #border, table{ border:4px solid rgb(222, 202, 204) }
```

If only the border color should be changed use the property `border-color`.

```
.border{ border-color:rgb(222, 202, 204) }
```

If you want to add a box shadow in that color use:

Here you see how a box with a 4 pixel `rgb(222, 202, 204)` colored shadow looks like.

```
.boxshadow{ -moz-box-shadow:4px 4px 4px  
4px rgb(222, 202, 204); -webkit-box-  
shadow:4px 4px 4px 4px rgb(222, 202, 204);  
box-shadow:4px 4px 4px 4px rgb(222, 202,  
204) }
```

Background

The CSS property to change the background color of an element to CIELCh 83, 7.476, 11.825 is called "background". The background property can be set on classes, ids or directly on the HTML element.

```
.background, #background, body{  
background: rgb(222, 202, 204) }
```

If only the background color should be changed can be used:

```
.background{ background-color: rgb(222,  
202, 204) }
```

This example shows the color as background, it is applied via the CSS property "background".

To optimize and compress your CSS code, you can use our [online CSS compressor and optimizer](#) based on csstidy. If you want to create a linear or radial gradient as background or border, check our [CSS Gradient Generator](#).

Hey! You found this booklet interesting? Support Converting Colors with the new Membership Option!

The pro membership hides all ads, plus gives you double the colors in the color bucket, and more awesome pro features!

[Learn more, Memberships starting at \\$2.50/m!](#)

**Follow me
on Twitter!**

@ConvertingColor