

Converting Colors

CIELCh(83, 79.478, 15.526)

Have a look what the booklet for
CIELCh(83, 79.478, 15.526) contains.

CIELCh(71, 48.792, 2.544)	3
<i>Conversions</i>	4
<i>Details</i>	6
<i>Harmonies</i>	11
<i>Previews</i>	20
<i>Color Blindness Simulation</i>	23
<i>CSS Examples</i>	26

Color

CIELCh(71, 48.792, 2.544)

Conversions

Conversions Part 1

Format	Color
Hex	FF89AC
RGB	255, 137, 172
RGB Percent	100%, 54%, 67%
CMY	0.0000, 0.4638, 0.3267
CMYK	0.00, 0.46, 0.33, 0.00
HSL	342°, 100%, 77%
HSV	342°, 46%, 100%
XYZ	57.8547, 42.1875, 43.9740
YIQ	176.2720, 59.0930, 35.9010

Conversions

Conversions Part 2

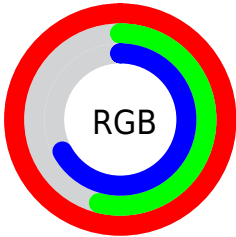
Format	Color
R_{YB}	255, 137, 172
Decimal	16746924
CIE Lab	71.00, 48.74, 2.17
CIE LCh	71, 48.792, 2.544
Yxy	42.1875, 0.4017, 0.2929
Android (android.graphics.Color)	4294937004 (0xFFFF89AC)
YUV	176.2720, -2.1061, 69.0445
Hunter-Lab	64.9519, 45.3298, 5.3256

Details

The CIELCh color $71, 48.792, 2.544$ is a light color, and the websafe version is hex `FF99CC`. A complement of this color would be $93, 42.046, 171.266$, and the grayscale version is $72, 0.009, 296.813$.

A 20% lighter version of the original color is $84, 28.554, 343.221$, and $51, 48.422, 2.012$ is the 20% darker color. If you saturate the color by 10%, you get $66, 58.738, 4.574$, and if you desaturate by 10%, it is $77, 37.835, 0.588$.

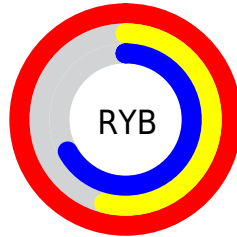
Distribution



Red (100%)

Green (54%)

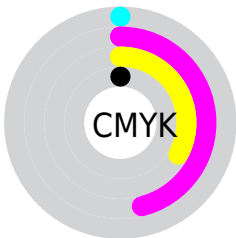
Blue (67%)



Red (100%)

Yellow (54%)

Blue (67%)

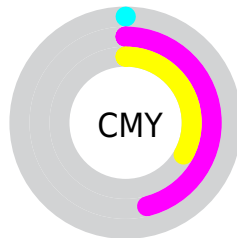


Cyan (0%)

Magenta (46%)

Yellow (33%)

Black (0%)



Cyan (0%)

Magenta (46%)

Yellow (33%)

Brightness & Saturation Gradients

These gradients show how the CIELCh color 71, 48.792, 2.544 changes by changing the brightness by 10 percent. The first figure shows a shift by +10% for each color and the second figure -10%.

Similar to the brightness gradients but the following saturation gradients show a change of the CIELCh color 71, 48.792, 2.544 by changing the saturation by 10% instead.

 71, 48.792, 2.544

 71, 48.792, 2.544

 100, 48.792, 2.544

 61, 48.792, 2.544

 91, 48.792, 2.544

 51, 48.792, 2.544

 41, 48.792, 2.544

 31, 48.792, 2.544

 21, 48.792, 2.544

 11, 48.792, 2.544

 1, 48.792, 2.544

 0, 48.792, 2.544

 71, 48.792, 2.544

 71, 48.792, 2.544

66, 58.738, 4.574

77, 37.835, 0.588

61, 68.027, 7.358

83, 27.084,
359.119

58, 75.912, 10.898

89, 16.523,
357.876

55, 82.139, 15.346

54, 86.883, 20.712

96, 6.308, 356.766

54, 88.490, 22.735

100, 0.012,
296.813

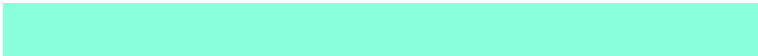
Harmonies

Complementary

The Complementary color scheme is a pair of colors which are on the opposite of each other on the color wheel.



71, 48.792, 2.544



93, 42.046, 171.266

Rectangle

The Rectangle color scheme consists of four colors that form a rectangle on the color wheel.



71, 48.792, 2.544



71, 48.792, 52.544



71, 48.792, 182.544



71, 48.792, 232.544

Sweetspot

The Sweet Spot groups the original color and five complimentary colors.



71, 48.514, 2.367



91, 14.052, 357.605



70, 69.009, 317.705



47, 9.743, 357.850



0, 0.000, 0.000



53, 0.007, 296.813

Same Dimension

The Same Dimension uses a secret algorithm to generate beautiful new colors.



71, 48.514, 2.367



66, 58.360, 4.479



75, 42.395, 39.700



50, 5.654, 357.109



40, 70.830, 21.644



10, 31.478, 13.044

Inverse Universe

The Inverse Universe completely reimagines the original color for something new.



71, 48.514, 2.367



66, 58.360, 4.479



87, 29.877, 222.507



50, 5.654, 357.109



40, 70.830, 21.644



10, 31.478, 13.044

Previews

White Background



This preview shows how the CIELCh color 71, 48.792, 2.544 looks on a white background.

Color Contrast Check

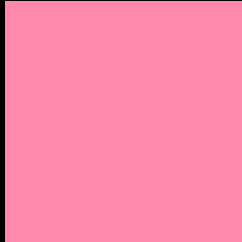
Large Text (above 18pt) WCAG AA × Fail

Any Text WCAG AA × Fail

Large Text (above 18pt) WCAG AAA × Fail

Any Text WCAG AAA × Fail

Black Background



This preview shows how the CIELCh color 71, 48.792, 2.544 looks on a black background.

Color Contrast Check

Large Text (above 18pt) WCAG AA ✓ Pass

Any Text WCAG AA ✓ Pass

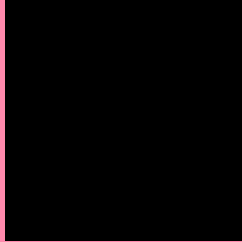
Large Text (above 18pt) WCAG AAA ✓ Pass

Any Text WCAG AAA ✓ Pass

If you want to check with other color combinations, try the [Color Contrast Checker](#).

CIELCh 71, 48.792, 2.544

Background



This preview shows how black text looks on a background with the CIELCh color 71, 48.792, 2.544.

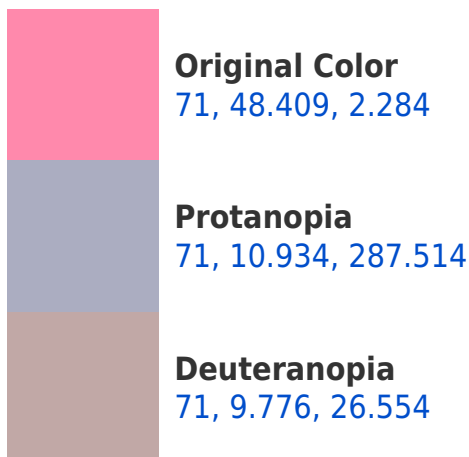


This preview shows how white text looks on a background with the CIELCh color 71, 48.792, 2.544.

Color Blindness Simulation

Color vision deficiency is a very complex topic, and I could not describe the different causes any better than Wikipedia does, so if you want to learn more, you should check out their [article about color blindness](#).

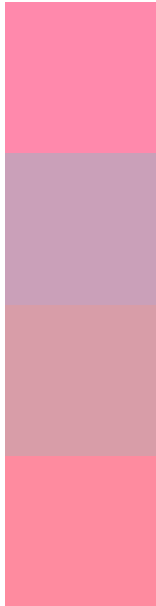
Dichromacy





Tritanopia
71, 45.772, 16.973

Trichromacy



Original Color
71, 48.409, 2.284

Protanomaly
70, 20.806, 340.487

Deuteranomaly
71, 23.746, 7.240

Tritanomaly
71, 46.409, 11.284

Monochromacy



Original Color
71, 48.409, 2.284

Achromatopsia
72, 0.009, 296.813

Achromatomaly
71, 17.741, 359.573

CSS Examples

Text

The CSS property to change the color of the text to CIELCh 71, 48.792, 2.544 is called "color". The color property can be set on classes, ids or directly on the HTML element.

This example shows how text in the color `rgb(255, 137, 172)` looks like.

```
.text, #text, p{  
    color:rgb(255, 137, 172)  
}
```

If you want to add a text shadow in that color use the text-shadow property, you can generate a text shadow directly with our [CSS Text Shadow Generator](#).

Here you see how black text with a 4 pixel rgb(255, 137, 172) colored shadow looks like.

```
.shadow{ text-shadow: 4px 4px 2px rgb(255, 137, 172) }
```

Border

The CSS property to change the border of an element to CIELCh 71, 48.792, 2.544 is called "border". The border property can be set on classes, ids or directly on the HTML element.

This example shows the color as border, it can be applied via the CSS property "border" or "border-color".

```
.border, #border, table{ border:4px solid rgb(255, 137, 172) }
```

If only the border color should be changed use the property `border-color`.

```
.border{ border-color:rgb(255, 137, 172) }
```

If you want to add a box shadow in that color use:

Here you see how a box with a 4 pixel `rgb(255, 137, 172)` colored shadow looks like.

```
.boxshadow{ -moz-box-shadow:4px 4px 4px  
4px rgb(255, 137, 172); -webkit-box-  
shadow:4px 4px 4px 4px rgb(255, 137, 172);  
box-shadow:4px 4px 4px 4px rgb(255, 137,  
172) }
```

Background

The CSS property to change the background color of an element to CIELCh 71, 48.792, 2.544 is called "background". The background property can be set on classes, ids or directly on the HTML element.

```
.background, #background, body{  
background: rgb(255, 137, 172) }
```

If only the background color should be changed can be used:

```
.background{ background-color: rgb(255,  
137, 172) }
```

This example shows the color as background, it is applied via the CSS property "background".

To optimize and compress your CSS code, you can use our [online CSS compressor and optimizer](#) based on csstidy. If you want to create a linear or radial gradient as background or border, check our [CSS Gradient Generator](#).

Hey! You found this booklet interesting? Support Converting Colors with the new Membership Option!

The pro membership hides all ads, plus gives you double the colors in the color bucket, and more awesome pro features!

[Learn more, Memberships starting at \\$2.50/m!](#)

**Follow me
on Twitter!**

@ConvertingColor