

Converting Colors

CIE LCh(83, 8.281, 353.360)

Have a look what the booklet for
CIELCh(83, 8.281, 353.360) contains.

CIELCh(83, 8.229, 353.372)	3
<i>Conversions</i>	4
<i>Details</i>	6
<i>Harmonies</i>	12
<i>Previews</i>	21
<i>Color Blindness Simulation</i>	24
<i>CSS Examples</i>	27

Color

CIELCh(83, 8.229, 353.372)

Conversions

Conversions Part 1

Format	Color
Hex	DECAD1
RGB	222, 202, 209
RGB Percent	87%, 79%, 82%
CMY	0.1307, 0.2090, 0.1816
CMYK	0.00, 0.09, 0.06, 0.13
HSL	339°, 23%, 83%
HSV	339°, 9%, 87%
XYZ	62.5448, 62.1629, 68.8211
YIQ	208.7780, 9.6730, 6.4170

Conversions

Conversions Part 2

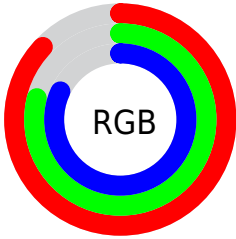
Format	Color
R _Y B	222, 202, 209
Decimal	14600913
CIE Lab	83.00, 8.17, -0.95
CIE LCh	83, 8.229, 353.372
Yxy	62.1629, 0.3232, 0.3212
Android (android.graphics.Color)	4292790993 (0xFFDECAD1)
YUV	208.7780, 0.1094, 11.5957
Hunter-Lab	78.8435, 3.6240, 3.4372

Details

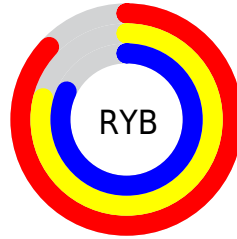
The CIELCh color $83, 8.229, 353.372$ is a light color, and the websafe version is hex `CCCCCC`. A complement of this color would be $87, 8.048, 171.834$, and the grayscale version is $84, 0.010, 296.813$.

A 20% lighter version of the original color is $100, 0.012, 296.813$, and $63, 8.361, 352.398$ is the 20% darker color. If you saturate the color by 10%, you get $77, 17.647, 354.469$, and if you desaturate by 10%, it is $89, 0.873, 173.082$.

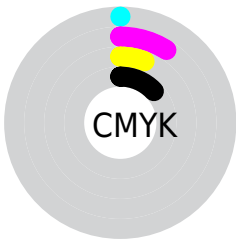
Distribution



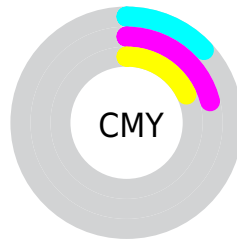
- Red (87%)
- Green (79%)
- Blue (82%)



- Red (87%)
- Yellow (79%)
- Blue (82%)



- Cyan (0%)
- Magenta (9%)
- Yellow (6%)
- Black (13%)



- Cyan (13%)
- Magenta (21%)
- Yellow (18%)

Brightness & Saturation Gradients

These gradients show how the CIELCh color 83, 8.229, 353.372 changes by changing the brightness by 10 percent. The first figure shows a shift by +10% for each color and the second figure -10%.

Similar to the brightness gradients but the following saturation gradients show a change of the CIELCh color 83, 8.229, 353.372 by changing the saturation by 10% instead.

83, 8.229, 353.372

83, 8.229, 353.372

100, 8.229,
353.372

73, 8.229, 353.372

63, 8.229, 353.372

53, 8.229, 353.372

43, 8.229, 353.372

33, 8.229, 353.372

23, 8.229, 353.372

13, 8.229, 353.372

3, 8.229, 353.372

0, 8.229, 353.372

83, 8.229, 353.372

83, 8.229, 353.372

77, 17.647,
354.469

89, 0.873, 173.082

95, 9.607, 171.739

72, 27.290,
355.701

98, 11.460,
190.830

66, 36.981,
357.150

98, 11.256,
198.754

61, 46.442,
358.894

57, 55.289, 1.044

53, 63.061, 3.748

50, 69.335, 7.181

48, 73.919, 11.509

47, 77.172, 16.699

Harmonies

Complementary

The Complementary color scheme is a pair of colors which are on the opposite of each other on the color wheel.



83, 8.229, 353.372



87, 8.048, 171.834

Rectangle

The Rectangle color scheme consists of four colors that form a rectangle on the color wheel.



83, 8.229, 353.372



83, 8.229, 43.372



83, 8.229, 173.372



83, 8.229, 223.372

Sweetspot

The Sweet Spot groups the original color and five complimentary colors.



83, 8.227, 353.380



98, 3.035, 352.689



83, 11.606, 314.489



52, 2.304, 352.802



0, 0.000, 0.000



53, 0.007, 296.813

Same Dimension

The Same Dimension uses a secret algorithm to generate beautiful new colors.



83, 8.227, 353.380



93, 11.284, 353.598



84, 6.496, 33.797



43, 5.138, 353.423



36, 64.275, 16.200



6, 24.059, 4.209

Inverse Universe

The Inverse Universe completely reimagines the original color for something new.



83, 8.227, 353.380



93, 11.284, 353.598



86, 6.132, 213.987



43, 5.138, 353.423



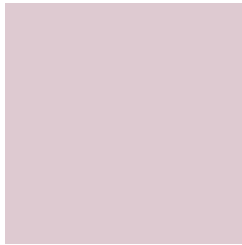
36, 64.275, 16.200



6, 24.059, 4.209

Previews

White Background



This preview shows how the CIELCh color 83, 8.229, 353.372 looks on a white background.

Color Contrast Check

Large Text (above 18pt) WCAG AA × Fail

Any Text WCAG AA × Fail

Large Text (above 18pt) WCAG AAA × Fail

Any Text WCAG AAA × Fail

Black Background



This preview shows how the CIELCh color 83, 8.229, 353.372 looks on a black background.

Color Contrast Check

Large Text (above 18pt) WCAG AA ✓ Pass

Any Text WCAG AA ✓ Pass

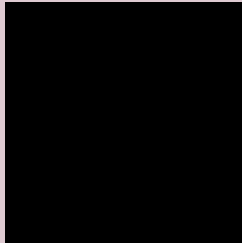
Large Text (above 18pt) WCAG AAA ✓ Pass

Any Text WCAG AAA ✓ Pass

If you want to check with other color combinations, try the [Color Contrast Checker](#).

CIELCh 83, 8.229, 353.372

Background



This preview shows how black text looks on a background with the CIELCh color 83, 8.229, 353.372.



This preview shows how white text looks on a background with the CIELCh color 83, 8.229, 353.372.

Color Blindness Simulation

Color vision deficiency is a very complex topic, and I could not describe the different causes any better than Wikipedia does, so if you want to learn more, you should check out their [article about color blindness](#).

Dichromacy



Original Color

83, 8.229, 353.372

Protanopia

83, 2.876, 312.526

Deuteranopia

83, 10.687, 353.891



Tritanopia
83, 11.280, 335.685

Trichromacy



Original Color
83, 8.229, 353.372

Protanomaly
83, 4.852, 338.899

Deuteranomaly
83, 9.458, 353.649

Tritanomaly
83, 10.248, 342.032

Monochromacy



Original Color
83, 8.229, 353.372

Achromatopsia
83, 0.010, 296.813

Achromatomaly
83, 2.774, 357.078

CSS Examples

Text

The CSS property to change the color of the text to CIELCh 83, 8.229, 353.372 is called "color". The color property can be set on classes, ids or directly on the HTML element.

This example shows how text in the color `rgb(222, 202, 209)` looks like.

```
.text, #text, p{  
    color:rgb(222, 202, 209)  
}
```

If you want to add a text shadow in that color use the text-shadow property, you can generate a text shadow directly with our [CSS Text Shadow Generator](#).

Here you see how black text with a 4 pixel rgb(222, 202, 209) colored shadow looks like.

```
.shadow{ text-shadow: 4px 4px 2px rgb(222, 202, 209) }
```

Border

The CSS property to change the border of an element to CIELCh 83, 8.229, 353.372 is called "border". The border property can be set on classes, ids or directly on the HTML element.

This example shows the color as border, it can be applied via the CSS property "border" or "border-color".

```
.border, #border, table{ border:4px solid rgb(222, 202, 209) }
```

If only the border color should be changed use the property `border-color`.

```
.border{ border-color:rgb(222, 202, 209) }
```

If you want to add a box shadow in that color use:

Here you see how a box with a 4 pixel `rgb(222, 202, 209)` colored shadow looks like.

```
.boxshadow{ -moz-box-shadow:4px 4px 4px  
4px rgb(222, 202, 209); -webkit-box-  
shadow:4px 4px 4px 4px rgb(222, 202, 209);  
box-shadow:4px 4px 4px 4px rgb(222, 202,  
209) }
```

Background

The CSS property to change the background color of an element to CIELCh 83, 8.229, 353.372 is called "background". The background property can be set on classes, ids or directly on the HTML element.

```
.background, #background, body{  
background: rgb(222, 202, 209) }
```

If only the background color should be changed can be used:

```
.background{ background-color: rgb(222,  
202, 209) }
```

This example shows the color as background, it is applied via the CSS property "background".

To optimize and compress your CSS code, you can use our [online CSS compressor and optimizer](#) based on csstidy. If you want to create a linear or radial gradient as background or border, check our [CSS Gradient Generator](#).

Hey! You found this booklet interesting? Support Converting Colors with the new Membership Option!

The pro membership hides all ads, plus gives you double the colors in the color bucket, and more awesome pro features!

[Learn more, Memberships starting at \\$2.50/m!](#)

**Follow me
on Twitter!**

@ConvertingColor