

Converting Colors

CIELCh(83, 8.434, 11.033)

Have a look what the booklet for
CIELCh(83, 8.434, 11.033) contains.

CIELCh(83, 8.669, 9.538)	3
<i>Conversions</i>	4
<i>Details</i>	6
<i>Harmonies</i>	11
<i>Previews</i>	20
<i>Color Blindness Simulation</i>	23
<i>CSS Examples</i>	26

Color

CIELCh(83, 8.669, 9.538)

Conversions

Conversions Part 1

Format	Color
Hex	E0C9CC
RGB	224, 201, 204
RGB Percent	88%, 79%, 80%
CMY	0.1205, 0.2107, 0.1989
CMYK	0.00, 0.10, 0.09, 0.12
HSL	352°, 27%, 83%
HSV	352°, 10%, 88%
XYZ	62.7068, 62.1629, 65.9904
YIQ	208.2190, 12.7450, 5.8090

Conversions

Conversions Part 2

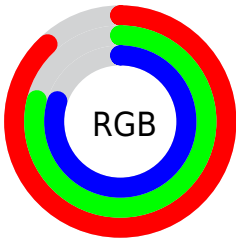
Format	Color
R _Y B	224, 201, 204
Decimal	14731724
CIE Lab	83.00, 8.55, 1.44
CIE LCh	83, 8.669, 9.538
Yxy	62.1629, 0.3285, 0.3257
Android (android.graphics.Color)	4292921804 (0xFFE0C9CC)
YUV	208.2190, -2.0800, 13.8399
Hunter-Lab	78.8435, 3.9907, 5.5659

Details

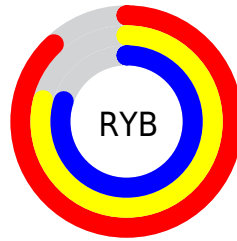
The CIELCh color **83, 8.669, 9.538** is a light color, and the websafe version is hex **CCCCCC**. A complement of this color would be **88, 8.252, 187.935**, and the grayscale version is **84, 0.010, 296.813**.

A 20% lighter version of the original color is **100, 0.012, 296.813**, and **63, 8.819, 9.335** is the 20% darker color. If you saturate the color by 10%, you get **77, 17.646, 10.646**, and if you desaturate by 10%, it is **89, 0.213, 6.020**.

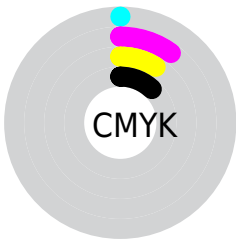
Distribution



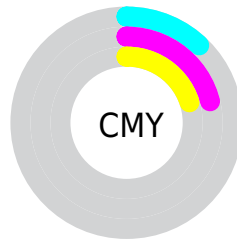
- Red (88%)
- Green (79%)
- Blue (80%)



- Red (88%)
- Yellow (79%)
- Blue (80%)



- Cyan (0%)
- Magenta (10%)
- Yellow (9%)
- Black (12%)



- Cyan (12%)
- Magenta (21%)
- Yellow (20%)

Brightness & Saturation Gradients

These gradients show how the CIELCh color 83, 8.669, 9.538 changes by changing the brightness by 10 percent. The first figure shows a shift by +10% for each color and the second figure -10%.

Similar to the brightness gradients but the following saturation gradients show a change of the CIELCh color 83, 8.669, 9.538 by changing the saturation by 10% instead.

83, 8.669, 9.538

83, 8.669, 9.538

100, 8.669, 9.538

73, 8.669, 9.538

63, 8.669, 9.538

53, 8.669, 9.538

43, 8.669, 9.538

33, 8.669, 9.538

23, 8.669, 9.538

13, 8.669, 9.538

3, 8.669, 9.538

0, 8.669, 9.538

83, 8.669, 9.538

83, 8.669, 9.538

77, 17.646, 10.646

89, 0.213, 6.020

71, 27.109, 11.956

95, 7.722, 188.055

66, 36.949, 13.576

98, 10.409,
198.812

61, 46.969, 15.615

56, 56.876, 18.208

52, 66.315, 21.491

50, 74.961, 25.544

48, 82.592, 30.244

47, 88.934, 34.803

Harmonies

Complementary

The Complementary color scheme is a pair of colors which are on the opposite of each other on the color wheel.



83, 8.669, 9.538



88, 8.252, 187.935

Rectangle

The Rectangle color scheme consists of four colors that form a rectangle on the color wheel.



83, 8.669, 9.538



83, 8.669, 59.538



83, 8.669, 189.538



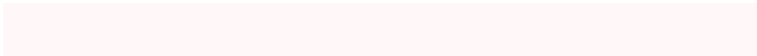
83, 8.669, 239.538

Sweetspot

The Sweet Spot groups the original color and five complimentary colors.



83, 8.667, 9.549



98, 2.753, 8.729



83, 14.146, 321.230



52, 2.091, 8.848



0, 0.000, 0.000



53, 0.007, 296.813

Same Dimension

The Same Dimension uses a secret algorithm to generate beautiful new colors.



83, 8.667, 9.549



92, 11.318, 9.740



85, 6.984, 58.817



44, 4.789, 9.466



37, 73.523, 33.985



6, 25.313, 15.438

Inverse Universe

The Inverse Universe completely reimagines the original color for something new.



83, 8.667, 9.549



92, 11.318, 9.740



85, 6.668, 240.947



44, 4.789, 9.466



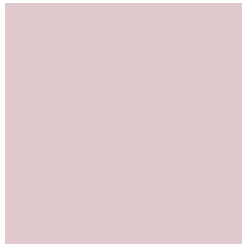
37, 73.523, 33.985



6, 25.313, 15.438

Previews

White Background



This preview shows how the CIELCh color 83, 8.669, 9.538 looks on a white background.

Color Contrast Check

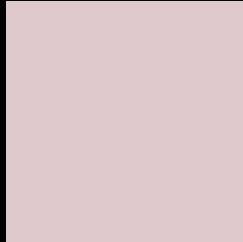
Large Text (above 18pt) WCAG AA × Fail

Any Text WCAG AA × Fail

Large Text (above 18pt) WCAG AAA × Fail

Any Text WCAG AAA × Fail

Black Background



This preview shows how the CIE LCh color 83, 8.669, 9.538 looks on a black background.

Color Contrast Check

Large Text (above 18pt) WCAG AA ✓ Pass

Any Text WCAG AA ✓ Pass

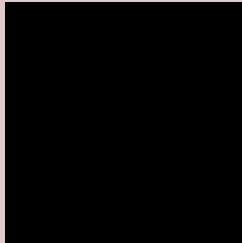
Large Text (above 18pt) WCAG AAA ✓ Pass

Any Text WCAG AAA ✓ Pass

If you want to check with other color combinations, try the [Color Contrast Checker](#).

CIELCh 83, 8.669, 9.538

Background



This preview shows how black text looks on a background with the CIELCh color 83, 8.669, 9.538.

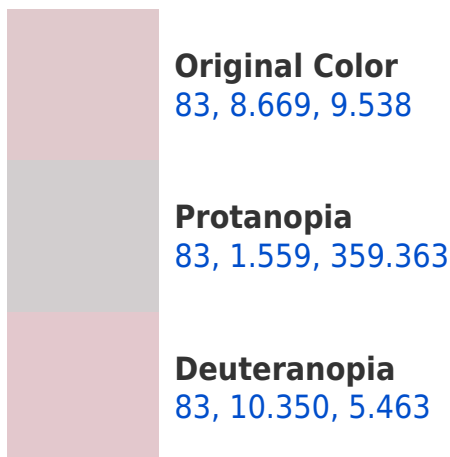


This preview shows how white text looks on a background with the CIELCh color 83, 8.669, 9.538.

Color Blindness Simulation

Color vision deficiency is a very complex topic, and I could not describe the different causes any better than Wikipedia does, so if you want to learn more, you should check out their [article about color blindness](#).

Dichromacy





Tritanopia
83, 12.367, 340.596

Trichromacy



Original Color

83, 8.669, 9.538

Protanomaly

83, 4.177, 4.976

Deuteranomaly

83, 9.987, 4.878

Tritanomaly

83, 10.861, 347.965

Monochromacy



Original Color

83, 8.669, 9.538

Achromatopsia

83, 0.010, 296.813

Achromatomaly

83, 2.977, 9.254

CSS Examples

Text

The CSS property to change the color of the text to CIELCh 83, 8.669, 9.538 is called "color". The color property can be set on classes, ids or directly on the HTML element.

This example shows how text in the color `rgb(224, 201, 204)` looks like.

```
.text, #text, p{  
    color:rgb(224, 201, 204)  
}
```

If you want to add a text shadow in that color use the text-shadow property, you can generate a text shadow directly with our [CSS Text Shadow Generator](#).

Here you see how black text with a 4 pixel rgb(224, 201, 204) colored shadow looks like.

```
.shadow{ text-shadow: 4px 4px 2px rgb(224, 201, 204) }
```

Border

The CSS property to change the border of an element to CIELCh 83, 8.669, 9.538 is called "border". The border property can be set on classes, ids or directly on the HTML element.

This example shows the color as border, it can be applied via the CSS property "border" or "border-color".

```
.border, #border, table{ border:4px solid rgb(224, 201, 204) }
```

If only the border color should be changed use the property `border-color`.

```
.border{ border-color:rgb(224, 201, 204) }
```

If you want to add a box shadow in that color use:

Here you see how a box with a 4 pixel `rgb(224, 201, 204)` colored shadow looks like.

```
.boxshadow{ -moz-box-shadow:4px 4px 4px  
4px rgb(224, 201, 204); -webkit-box-  
shadow:4px 4px 4px 4px rgb(224, 201, 204);  
box-shadow:4px 4px 4px 4px rgb(224, 201,  
204) }
```

Background

The CSS property to change the background color of an element to CIELCh 83, 8.669, 9.538 is called "background". The background property can be set on classes, ids or directly on the HTML element.

```
.background, #background, body{  
background: rgb(224, 201, 204) }
```

If only the background color should be changed can be used:

```
.background{ background-color: rgb(224,  
201, 204) }
```

This example shows the color as background, it is applied via the CSS property "background".

To optimize and compress your CSS code, you can use our [online CSS compressor and optimizer](#) based on csstidy. If you want to create a linear or radial gradient as background or border, check our [CSS Gradient Generator](#).

Hey! You found this booklet interesting? Support Converting Colors with the new Membership Option!

The pro membership hides all ads, plus gives you double the colors in the color bucket, and more awesome pro features!

[Learn more, Memberships starting at \\$2.50/m!](#)

**Follow me
on Twitter!**

@ConvertingColor