

# Converting Colors

CIELCh(83, 8.472, 350.177)

Have a look what the booklet for  
CIELCh(83, 8.472, 350.177) contains.

<b>CIELCh(83, 8.472, 350.177)</b> .....	3
<b><i>Conversions</i></b> .....	4
<b><i>Details</i></b> .....	6
<b><i>Harmonies</i></b> .....	12
<b><i>Previews</i></b> .....	21
<b><i>Color Blindness Simulation</i></b> .....	24
<b><i>CSS Examples</i></b> .....	27

# Color

**CIELCh(83, 8.472, 350.177)**

# Conversions

## Conversions Part 1

<b>Format</b>	<b>Color</b>
Hex	DECAD2
RGB	222, 202, 210
RGB Percent	87%, 79%, 82%
CMY	0.1309, 0.2093, 0.1780
CMYK	0.00, 0.09, 0.05, 0.13
HSL	336°, 23%, 83%
HSV	336°, 9%, 87%
XYZ	62.6198, 62.1629, 69.4189
YIQ	208.8920, 9.3520, 6.7280

# Conversions

## Conversions Part 2

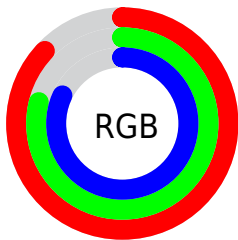
Format	Color
R <sub>Y</sub> B	222, 202, 210
Decimal	14600914
CIE Lab	83.00, 8.35, -1.45
CIE LCh	83, 8.472, 350.177
Yxy	62.1629, 0.3224, 0.3201
Android (android.graphics.Color)	4292790994 (0xFFDECAD2)
YUV	208.8920, 0.5462, 11.4957
Hunter-Lab	78.8435, 3.7938, 2.9877

# Details

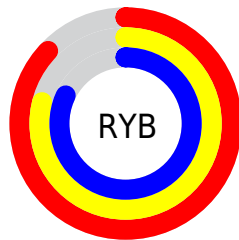
The CIELCh color  $83, 8.472, 350.177$  is a light color, and the websafe version is hex `CCCCCC`. A complement of this color would be  $87, 8.316, 168.671$ , and the grayscale version is  $84, 0.010, 296.813$ .

A 20% lighter version of the original color is  $100, 0.012, 296.813$ , and  $63, 8.625, 349.104$  is the 20% darker color. If you saturate the color by 10%, you get  $77, 18.123, 351.231$ , and if you desaturate by 10%, it is  $89, 0.898, 169.871$ .

# Distribution



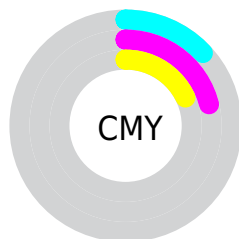
- Red (87%)
- Green (79%)
- Blue (82%)



- Red (87%)
- Yellow (79%)
- Blue (82%)



- Cyan (0%)
- Magenta (9%)
- Yellow (5%)
- Black (13%)



- Cyan (13%)
- Magenta (21%)
- Yellow (18%)

# Brightness & Saturation Gradients

These gradients show how the CIELCh color 83, 8.472, 350.177 changes by changing the brightness by 10 percent. The first figure shows a shift by +10% for each color and the second figure -10%.

Similar to the brightness gradients but the following saturation gradients show a change of the CIELCh color 83, 8.472, 350.177 by changing the saturation by 10% instead.



■ 83, 8.472, 350.177

■ 83, 8.472, 350.177

■ 100, 8.472,  
350.177

■ 73, 8.472, 350.177

■ 63, 8.472, 350.177

■ 53, 8.472, 350.177

■ 43, 8.472, 350.177

■ 33, 8.472, 350.177

■ 23, 8.472, 350.177

■ 13, 8.472, 350.177

■ 3, 8.472, 350.177

■ 0, 8.472, 350.177

83, 8.472, 350.177

83, 8.472, 350.177

77, 18.123,  
351.231

89, 0.898, 169.871

95, 9.925, 168.578

72, 27.951,  
352.406

98, 11.787,  
184.914

66, 37.765,  
353.772

98, 11.280,  
198.753

61, 47.269,  
355.400

57, 56.056,  
357.389

53, 63.643,  
359.874

50, 69.575, 3.024

48, 73.627, 7.017

■ 47, 76.137, 11.881

# Harmonies

# Complementary

The Complementary color scheme is a pair of colors which are on the opposite of each other on the color wheel.



83, 8.472, 350.177



87, 8.316, 168.671

# Rectangle

The Rectangle color scheme consists of four colors that form a rectangle on the color wheel.



83, 8.472, 350.177



83, 8.472, 40.177



83, 8.472, 170.177



83, 8.472, 220.177

# Sweetspot

The Sweet Spot groups the original color and five complimentary colors.



83, 8.470, 350.184



98, 3.129, 349.518



83, 11.467, 312.847



52, 2.374, 349.626



0, 0.000, 0.000



53, 0.007, 296.813





# Same Dimension

The Same Dimension uses a secret algorithm to generate beautiful new colors.



83, 8.470, 350.184



93, 11.612, 350.394



83, 6.758, 28.754



43, 5.289, 350.225



37, 63.485, 11.411



6, 24.295, 1.209



# Inverse Universe

The Inverse Universe completely reimagines the original color for something new.



83, 8.470, 350.184



93, 11.612, 350.394



86, 6.375, 208.542



43, 5.289, 350.225



37, 63.485, 11.411

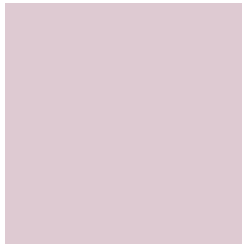


6, 24.295, 1.209



# Previews

## White Background



This preview shows how the CIELCh color 83, 8.472, 350.177 looks on a white background.

## Color Contrast Check

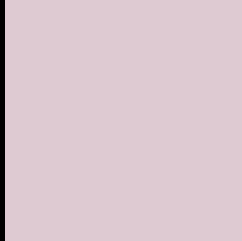
Large Text (above 18pt) WCAG AA × Fail

Any Text WCAG AA × Fail

Large Text (above 18pt) WCAG AAA × Fail

Any Text WCAG AAA × Fail

# Black Background



This preview shows how the CIELCh color 83, 8.472, 350.177 looks on a black background.

## Color Contrast Check

Large Text (above 18pt) WCAG AA ✓ Pass

Any Text WCAG AA ✓ Pass

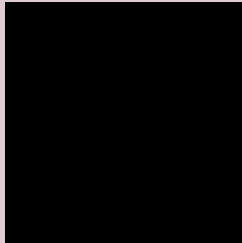
Large Text (above 18pt) WCAG AAA ✓ Pass

Any Text WCAG AAA ✓ Pass

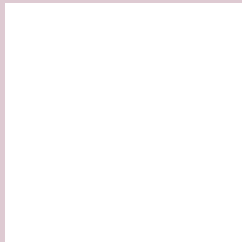
If you want to check with other color combinations, try the [Color Contrast Checker](#).

# CIELCh 83, 8.472, 350.177

## Background



This preview shows how black text looks on a background with the CIELCh color 83, 8.472, 350.177.



This preview shows how white text looks on a background with the CIELCh color 83, 8.472, 350.177.

# Color Blindness Simulation

Color vision deficiency is a very complex topic, and I could not describe the different causes any better than Wikipedia does, so if you want to learn more, you should check out their [article about color blindness](#).

## Dichromacy







**Tritanopia**  
83, 11.280, 335.685

# Trichromacy



**Original Color**  
83, 8.472, 350.177

**Protanomaly**  
83, 5.214, 334.533

**Deuteranomaly**  
83, 9.695, 350.849

**Tritanomaly**  
83, 10.302, 338.420

# Monochromacy



**Original Color**  
83, 8.472, 350.177

**Achromatopsia**  
84, 0.010, 296.813

**Achromatomaly**  
83, 3.333, 351.170

# CSS Examples

## Text

The CSS property to change the color of the text to CIELCh 83, 8.472, 350.177 is called "color". The color property can be set on classes, ids or directly on the HTML element.

This example shows how text in the color `rgb(222, 202, 210)` looks like.

```
.text, #text, p{  
    color:rgb(222, 202, 210)  
}
```

If you want to add a text shadow in that color use the text-shadow property, you can generate a text shadow directly with our [CSS Text Shadow Generator](#).

Here you see how black text with a 4 pixel rgb(222, 202, 210) colored shadow looks like.

```
.shadow{ text-shadow: 4px 4px 2px rgb(222, 202, 210) }
```

## Border

The CSS property to change the border of an element to CIELCh 83, 8.472, 350.177 is called "border". The border property can be set on classes, ids or directly on the HTML element.

This example shows the color as border, it can be applied via the CSS property "border" or "border-color".

```
.border, #border, table{ border:4px solid rgb(222, 202, 210) }
```

If only the border color should be changed use the property `border-color`.

```
.border{ border-color:rgb(222, 202, 210) }
```

If you want to add a box shadow in that color use:

Here you see how a box with a 4 pixel `rgb(222, 202, 210)` colored shadow looks like.

```
.boxshadow{ -moz-box-shadow:4px 4px 4px  
4px rgb(222, 202, 210); -webkit-box-  
shadow:4px 4px 4px 4px rgb(222, 202, 210);  
box-shadow:4px 4px 4px 4px rgb(222, 202,  
210) }
```

# Background

The CSS property to change the background color of an element to CIELCh 83, 8.472, 350.177 is called "background". The background property can be set on classes, ids or directly on the HTML element.

```
.background, #background, body{  
background: rgb(222, 202, 210) }
```

If only the background color should be changed can be used:

```
.background{ background-color: rgb(222,  
202, 210) }
```

This example shows the color as background, it is applied via the CSS property "background".

To optimize and compress your CSS code, you can use our [online CSS compressor and optimizer](#) based on csstidy. If you want to create a linear or radial gradient as background or border, check our [CSS Gradient Generator](#).

Hey! You found this booklet interesting? Support Converting Colors with the new Membership Option!

The pro membership hides all ads, plus gives you double the colors in the color bucket, and more awesome pro features!

**[Learn more, Memberships starting at \\$2.50/m!](#)**

**Follow me  
on Twitter!**

@ConvertingColor