

Converting Colors

CIELCh(83, 9.787, 1.758)

Have a look what the booklet for
CIELCh(83, 9.787, 1.758) contains.

CIELCh(83, 9.616, 4.246)	3
<i>Conversions</i>	4
<i>Details</i>	6
<i>Harmonies</i>	11
<i>Previews</i>	20
<i>Color Blindness Simulation</i>	23
<i>CSS Examples</i>	26

Color

CIELCh(83, 9.616, 4.246)

Conversions

Conversions Part 1

Format	Color
Hex	E2C9CE
RGB	226, 201, 206
RGB Percent	89%, 79%, 81%
CMY	0.1151, 0.2131, 0.1935
CMYK	0.00, 0.11, 0.09, 0.12
HSL	348°, 30%, 84%
HSV	348°, 11%, 88%
XYZ	63.1575, 62.1629, 66.8415
YIQ	209.0450, 13.2950, 6.8550

Conversions

Conversions Part 2

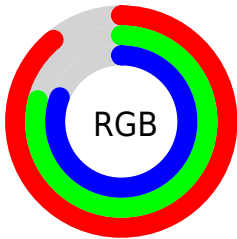
Format	Color
R _Y B	226, 201, 206
Decimal	14862798
CIE Lab	83.00, 9.59, 0.71
CIE LCh	83, 9.616, 4.246
Yxy	62.1629, 0.3287, 0.3235
Android (android.graphics.Color)	4293052878 (0xFFE2C9CE)
YUV	209.0450, -1.5012, 14.8695
Hunter-Lab	78.8435, 5.0112, 4.9259

Details

The CIELCh color **83, 9.616, 4.246** is a light color, and the websafe version is hex **CCCCCC**. A complement of this color would be **88, 9.201, 182.327**, and the grayscale version is **84, 0.010, 296.813**.

A 20% lighter version of the original color is **100, 0.012, 296.813**, and **63, 9.820, 3.918** is the 20% darker color. If you saturate the color by 10%, you get **77, 18.766, 5.412**, and if you desaturate by 10%, it is **89, 0.911, 2.743**.

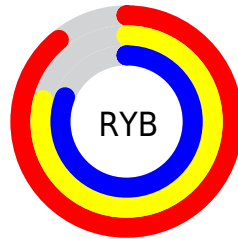
Distribution



Red (89%)

Green (79%)

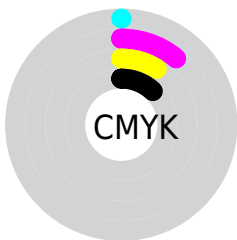
Blue (81%)



Red (89%)

Yellow (79%)

Blue (81%)

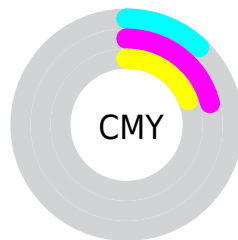


Cyan (0%)

Magenta (11%)

Yellow (9%)

Black (12%)



Cyan (12%)

Magenta (21%)

Yellow (19%)

Brightness & Saturation Gradients

These gradients show how the CIELCh color 83, 9.616, 4.246 changes by changing the brightness by 10 percent. The first figure shows a shift by +10% for each color and the second figure -10%.

Similar to the brightness gradients but the following saturation gradients show a change of the CIELCh color 83, 9.616, 4.246 by changing the saturation by 10% instead.

83, 9.616, 4.246

83, 9.616, 4.246

100, 9.616, 4.246

73, 9.616, 4.246

63, 9.616, 4.246

53, 9.616, 4.246

43, 9.616, 4.246

33, 9.616, 4.246

23, 9.616, 4.246

13, 9.616, 4.246

3, 9.616, 4.246

0, 9.616, 4.246

83, 9.616, 4.246

83, 9.616, 4.246

77, 18.766, 5.412

89, 0.911, 2.743

71, 28.300, 6.776

95, 7.324, 182.606

66, 38.073, 8.438

98, 9.960, 198.843

61, 47.845, 10.505

56, 57.280, 13.114

53, 65.990, 16.422

50, 73.658, 20.557

48, 80.186, 25.509

47, 85.312, 30.228

Harmonies

Complementary

The Complementary color scheme is a pair of colors which are on the opposite of each other on the color wheel.



83, 9.616, 4.246



88, 9.201, 182.327

Rectangle

The Rectangle color scheme consists of four colors that form a rectangle on the color wheel.



83, 9.616, 4.246



83, 9.616, 54.246



83, 9.616, 184.246



83, 9.616, 234.246

Sweetspot

The Sweet Spot groups the original color and five complimentary colors.



83, 9.614, 4.255



98, 2.817, 3.313



83, 15.072, 319.287



52, 2.140, 3.434



0, 0.000, 0.000



53, 0.007, 296.813

Same Dimension

The Same Dimension uses a secret algorithm to generate beautiful new colors.



83, 9.614, 4.255



91, 12.529, 4.476



85, 7.612, 50.769



44, 4.886, 4.078



37, 70.229, 29.248



6, 25.280, 12.476

Inverse Universe

The Inverse Universe completely reimagines the original color for something new.



83, 9.614, 4.255



91, 12.529, 4.476



86, 7.165, 232.486



44, 4.886, 4.078



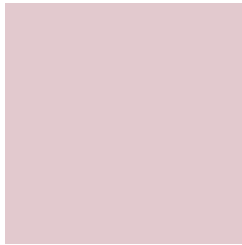
37, 70.229, 29.248



6, 25.280, 12.476

Previews

White Background



This preview shows how the CIELCh color 83, 9.616, 4.246 looks on a white background.

Color Contrast Check

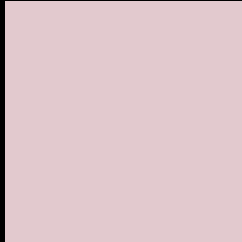
Large Text (above 18pt) WCAG AA × Fail

Any Text WCAG AA × Fail

Large Text (above 18pt) WCAG AAA × Fail

Any Text WCAG AAA × Fail

Black Background



This preview shows how the CIE LCh color 83, 9.616, 4.246 looks on a black background.

Color Contrast Check

Large Text (above 18pt) WCAG AA ✓ Pass

Any Text WCAG AA ✓ Pass

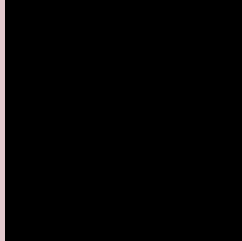
Large Text (above 18pt) WCAG AAA ✓ Pass

Any Text WCAG AAA ✓ Pass

If you want to check with other color combinations, try the [Color Contrast Checker](#).

CIELCh 83, 9.616, 4.246

Background



This preview shows how black text looks on a background with the CIELCh color 83, 9.616, 4.246.



This preview shows how white text looks on a background with the CIELCh color 83, 9.616, 4.246.

Color Blindness Simulation

Color vision deficiency is a very complex topic, and I could not describe the different causes any better than Wikipedia does, so if you want to learn more, you should check out their [article about color blindness](#).

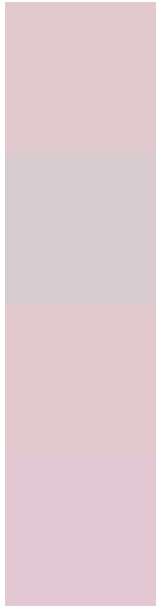
Dichromacy





Tritanopia
83, 13.267, 340.938

Trichromacy



Original Color

83, 9.616, 4.246

Protanomaly

83, 4.886, 354.103

Deuteranomaly

83, 10.481, 2.671

Tritanomaly

83, 11.755, 347.781

Monochromacy



Original Color

83, 9.616, 4.246

Achromatopsia

84, 0.010, 296.813

Achromatomaly

84, 3.463, 1.801

CSS Examples

Text

The CSS property to change the color of the text to CIELCh 83, 9.616, 4.246 is called "color". The color property can be set on classes, ids or directly on the HTML element.

This example shows how text in the color `rgb(226, 201, 206)` looks like.

```
.text, #text, p{  
    color:rgb(226, 201, 206)  
}
```

If you want to add a text shadow in that color use the text-shadow property, you can generate a text shadow directly with our [CSS Text Shadow Generator](#).

Here you see how black text with a 4 pixel rgb(226, 201, 206) colored shadow looks like.

```
.shadow{ text-shadow: 4px 4px 2px rgb(226, 201, 206) }
```

Border

The CSS property to change the border of an element to CIELCh 83, 9.616, 4.246 is called "border". The border property can be set on classes, ids or directly on the HTML element.

This example shows the color as border, it can be applied via the CSS property "border" or "border-color".

```
.border, #border, table{ border:4px solid rgb(226, 201, 206) }
```

If only the border color should be changed use the property `border-color`.

```
.border{ border-color:rgb(226, 201, 206) }
```

If you want to add a box shadow in that color use:

Here you see how a box with a 4 pixel `rgb(226, 201, 206)` colored shadow looks like.

```
.boxshadow{ -moz-box-shadow:4px 4px 4px  
4px rgb(226, 201, 206); -webkit-box-  
shadow:4px 4px 4px 4px rgb(226, 201, 206);  
box-shadow:4px 4px 4px 4px rgb(226, 201,  
206) }
```

Background

The CSS property to change the background color of an element to CIELCh 83, 9.616, 4.246 is called "background". The background property can be set on classes, ids or directly on the HTML element.

```
.background, #background, body{  
background: rgb(226, 201, 206) }
```

If only the background color should be changed can be used:

```
.background{ background-color: rgb(226,  
201, 206) }
```

This example shows the color as background, it is applied via the CSS property "background".

To optimize and compress your CSS code, you can use our [online CSS compressor and optimizer](#) based on csstidy. If you want to create a linear or radial gradient as background or border, check our [CSS Gradient Generator](#).

Hey! You found this booklet interesting? Support Converting Colors with the new Membership Option!

The pro membership hides all ads, plus gives you double the colors in the color bucket, and more awesome pro features!

[Learn more, Memberships starting at \\$2.50/m!](#)

**Follow me
on Twitter!**

@ConvertingColor