

Converting Colors

CIELCh(83, 9.862, 36.382)

Have a look what the booklet for
CIELCh(83, 9.862, 36.382) contains.

CIELCh(83, 9.774, 35.608)	3
<i>Conversions</i>	4
<i>Details</i>	6
<i>Harmonies</i>	11
<i>Previews</i>	20
<i>Color Blindness Simulation</i>	23
<i>CSS Examples</i>	26

Color

CIELCh(83, 9.774, 35.608)

Conversions

Conversions Part 1

Format	Color
Hex	E2C9C4
RGB	226, 201, 196
RGB Percent	89%, 79%, 77%
CMY	0.1123, 0.2104, 0.2300
CMYK	0.00, 0.11, 0.13, 0.11
HSL	10°, 34%, 83%
HSV	10°, 13%, 89%
XYZ	62.4467, 62.1629, 61.1383
YIQ	207.9050, 16.5050, 3.7450

Conversions

Conversions Part 2

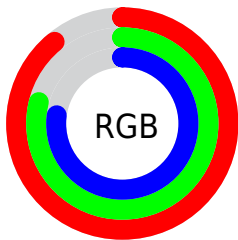
Format	Color
R_{YB}	226, 202, 196
Decimal	14862788
CIE Lab	83.00, 7.95, 5.69
CIE LCh	83, 9.774, 35.608
Yxy	62.1629, 0.3362, 0.3347
Android (android.graphics.Color)	4293052868 (0xFFE2C9C4)
YUV	207.9050, -5.8692, 15.8693
Hunter-Lab	78.8435, 3.4018, 9.2147

Details

The CIELCh color **83, 9.774, 35.608** is a light color, and the websafe version is hex **CCCCCC**. A complement of this color would be **87, 8.963, 215.967**, and the grayscale version is **84, 0.010, 296.813**.

A 20% lighter version of the original color is **100, 1.003, 110.026**, and **63, 9.661, 36.887** is the 20% darker color. If you saturate the color by 10%, you get **78, 17.880, 35.777**, and if you desaturate by 10%, it is **88, 2.303, 35.421**.

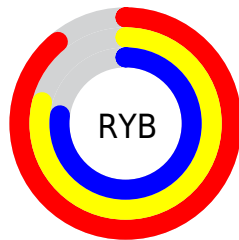
Distribution



Red (89%)

Green (79%)

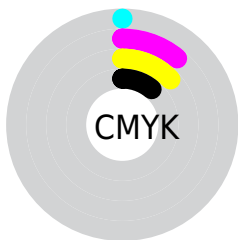
Blue (77%)



Red (89%)

Yellow (79%)

Blue (77%)

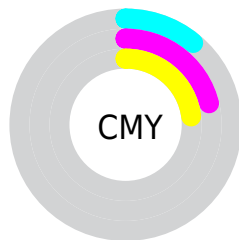


Cyan (0%)

Magenta (11%)

Yellow (13%)

Black (11%)



Cyan (11%)

Magenta (21%)

Yellow (23%)

Brightness & Saturation Gradients

These gradients show how the CIELCh color 83, 9.774, 35.608 changes by changing the brightness by 10 percent. The first figure shows a shift by +10% for each color and the second figure -10%.

Similar to the brightness gradients but the following saturation gradients show a change of the CIELCh color 83, 9.774, 35.608 by changing the saturation by 10% instead.



83, 9.774, 35.608

83, 9.774, 35.608

78, 17.880, 35.777

88, 2.303, 35.421

73, 26.666, 36.080

94, 4.585, 215.906

68, 36.148, 36.585

98, 9.726, 198.859

63, 46.289, 37.343

59, 56.972, 38.385

56, 67.931, 39.686

53, 78.582, 41.070

50, 87.636, 42.012

49, 92.242, 42.295

Harmonies

Complementary

The Complementary color scheme is a pair of colors which are on the opposite of each other on the color wheel.



83, 9.774, 35.608



87, 8.963, 215.967

Rectangle

The Rectangle color scheme consists of four colors that form a rectangle on the color wheel.



83, 9.774, 35.608



83, 9.774, 85.608



83, 9.774, 215.608



83, 9.774, 265.608

Sweetspot

The Sweet Spot groups the original color and five complimentary colors.



83, 9.773, 35.622



98, 3.125, 35.468



82, 17.124, 330.181



52, 2.228, 35.499



0, 0.000, 0.000



53, 0.007, 296.813

Same Dimension

The Same Dimension uses a secret algorithm to generate beautiful new colors.



83, 9.773, 35.622



91, 13.147, 35.656



87, 11.080, 89.441



44, 4.091, 35.582



38, 76.032, 42.642



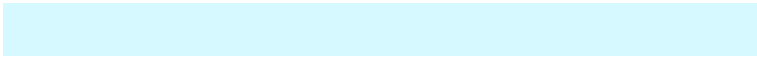
7, 22.813, 30.102

Inverse Universe

The Inverse Universe completely reimagines the original color for something new.



87, 8.963, 215.967



95, 11.816, 216.029



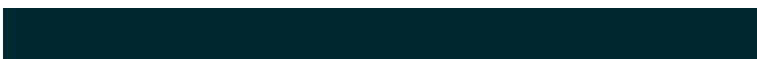
83, 11.058, 272.939



46, 3.851, 215.913



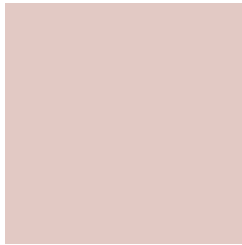
56, 32.963, 228.180



14, 13.590, 222.336

Previews

White Background



This preview shows how the CIELCh color 83, 9.774, 35.608 looks on a white background.

Color Contrast Check

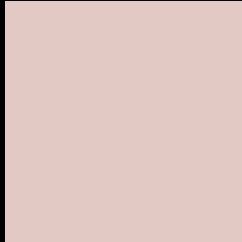
Large Text (above 18pt) WCAG AA × Fail

Any Text WCAG AA × Fail

Large Text (above 18pt) WCAG AAA × Fail

Any Text WCAG AAA × Fail

Black Background



This preview shows how the CIELCh color 83, 9.774, 35.608 looks on a black background.

Color Contrast Check

Large Text (above 18pt) WCAG AA ✓ Pass

Any Text WCAG AA ✓ Pass

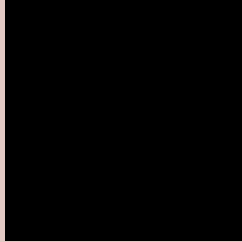
Large Text (above 18pt) WCAG AAA ✓ Pass

Any Text WCAG AAA ✓ Pass

If you want to check with other color combinations, try the [Color Contrast Checker](#).

CIELCh 83, 9.774, 35.608

Background



This preview shows how black text looks on a background with the CIELCh color 83, 9.774, 35.608.

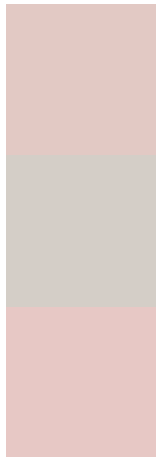


This preview shows how white text looks on a background with the CIELCh color 83, 9.774, 35.608.

Color Blindness Simulation

Color vision deficiency is a very complex topic, and I could not describe the different causes any better than Wikipedia does, so if you want to learn more, you should check out their [article about color blindness](#).

Dichromacy



Original Color

83, 9.774, 35.608

Protanopia

83, 4.285, 78.623

Deuteranopia

83, 11.798, 27.896



Tritanopia
83, 13.534, 344.738

Trichromacy



Original Color
83, 9.774, 35.608

Protanomaly
83, 5.768, 52.798

Deuteranomaly
83, 11.035, 28.373

Tritanomaly
83, 11.163, 358.110

Monochromacy



Original Color
83, 9.774, 35.608

Achromatopsia
83, 0.010, 296.813

Achromatomaly
83, 3.463, 37.163

CSS Examples

Text

The CSS property to change the color of the text to CIELCh 83, 9.774, 35.608 is called "color". The color property can be set on classes, ids or directly on the HTML element.

This example shows how text in the color `rgb(226, 201, 196)` looks like.

```
.text, #text, p{  
    color:rgb(226, 201, 196)  
}
```

If you want to add a text shadow in that color use the text-shadow property, you can generate a text shadow directly with our [CSS Text Shadow Generator](#).

Here you see how black text with a 4 pixel rgb(226, 201, 196) colored shadow looks like.

```
.shadow{ text-shadow: 4px 4px 2px rgb(226, 201, 196) }
```

Border

The CSS property to change the border of an element to CIELCh 83, 9.774, 35.608 is called "border". The border property can be set on classes, ids or directly on the HTML element.

This example shows the color as border, it can be applied via the CSS property "border" or "border-color".

```
.border, #border, table{ border:4px solid rgb(226, 201, 196) }
```

If only the border color should be changed use the property `border-color`.

```
.border{ border-color:rgb(226, 201, 196) }
```

If you want to add a box shadow in that color use:

Here you see how a box with a 4 pixel `rgb(226, 201, 196)` colored shadow looks like.

```
.boxshadow{ -moz-box-shadow:4px 4px 4px  
4px rgb(226, 201, 196); -webkit-box-  
shadow:4px 4px 4px 4px rgb(226, 201, 196);  
box-shadow:4px 4px 4px 4px rgb(226, 201,  
196) }
```

Background

The CSS property to change the background color of an element to CIELCh 83, 9.774, 35.608 is called "background". The background property can be set on classes, ids or directly on the HTML element.

```
.background, #background, body{  
background: rgb(226, 201, 196) }
```

If only the background color should be changed can be used:

```
.background{ background-color: rgb(226,  
201, 196) }
```

This example shows the color as background, it is applied via the CSS property "background".

To optimize and compress your CSS code, you can use our [online CSS compressor and optimizer](#) based on csstidy. If you want to create a linear or radial gradient as background or border, check our [CSS Gradient Generator](#).

Hey! You found this booklet interesting? Support Converting Colors with the new Membership Option!

The pro membership hides all ads, plus gives you double the colors in the color bucket, and more awesome pro features!

[Learn more, Memberships starting at \\$2.50/m!](#)

**Follow me
on Twitter!**

@ConvertingColor