

Converting Colors

CIELCh(83, 9.954, 31.880)

Have a look what the booklet for
CIELCh(83, 9.954, 31.880) contains.

CIELCh(83, 10.002, 32.183)	3
<i>Conversions</i>	4
<i>Details</i>	6
<i>Harmonies</i>	11
<i>Previews</i>	20
<i>Color Blindness Simulation</i>	23
<i>CSS Examples</i>	26

Color

CIELCh(83, 10.002, 32.183)

Conversions

Conversions Part 1

Format	Color
Hex	E3C9C5
RGB	227, 201, 197
RGB Percent	89%, 79%, 77%
CMY	0.1096, 0.2116, 0.2273
CMYK	0.00, 0.11, 0.13, 0.11
HSL	8°, 35%, 83%
HSV	8°, 13%, 89%
XYZ	62.6705, 62.1629, 61.5432
YIQ	208.3180, 16.7800, 4.2680

Conversions

Conversions Part 2

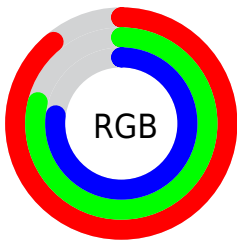
Format	Color
R _Y B	227, 202, 197
Decimal	14928325
CIE Lab	83.00, 8.47, 5.33
CIE LCh	83, 10.002, 32.183
Yxy	62.1629, 0.3363, 0.3335
Android (android.graphics.Color)	4293118405 (0xFFE3C9C5)
YUV	208.3180, -5.5798, 16.3841
Hunter-Lab	78.8435, 3.9086, 8.9102

Details

The CIELCh color **83, 10.002, 32.183** is a light color, and the websafe version is hex **CCCCCC**. A complement of this color would be **87, 9.166, 212.127**, and the grayscale version is **84, 0.010, 296.813**.

A 20% lighter version of the original color is **100, 0.496, 109.985**, and **63, 9.889, 33.212** is the 20% darker color. If you saturate the color by 10%, you get **78, 18.322, 32.523**, and if you desaturate by 10%, it is **88, 2.333, 31.839**.

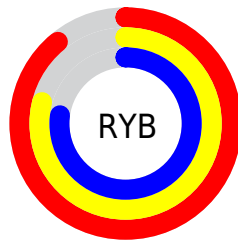
Distribution



Red (89%)

Green (79%)

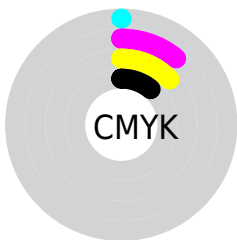
Blue (77%)



Red (89%)

Yellow (79%)

Blue (77%)

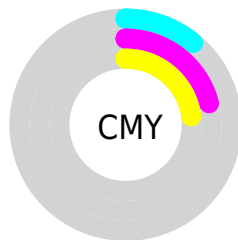


Cyan (0%)

Magenta (11%)

Yellow (13%)

Black (11%)



Cyan (11%)

Magenta (21%)

Yellow (23%)


Brightness & Saturation Gradients

These gradients show how the CIELCh color 83, 10.002, 32.183 changes by changing the brightness by 10 percent. The first figure shows a shift by +10% for each color and the second figure -10%.

Similar to the brightness gradients but the following saturation gradients show a change of the CIELCh color 83, 10.002, 32.183 by changing the saturation by 10% instead.

 83, 10.002, 32.183

 83, 10.002, 32.183

 100, 10.002,
32.183

 73, 10.002, 32.183

 63, 10.002, 32.183

 53, 10.002, 32.183

 43, 10.002, 32.183

 33, 10.002, 32.183

 23, 10.002, 32.183

 13, 10.002, 32.183

 3, 10.002, 32.183

 0, 10.002, 32.183

83, 10.002, 32.183

83, 10.002, 32.183

78, 18.322, 32.523

88, 2.333, 31.839

72, 27.334, 33.017

94, 4.735, 212.178

67, 37.041, 33.743

98, 9.500, 198.875

63, 47.389, 34.760

59, 58.239, 36.111

55, 69.304, 37.783

52, 79.986, 39.596

50, 88.972, 40.994

49, 93.456, 41.565

Harmonies

Complementary

The Complementary color scheme is a pair of colors which are on the opposite of each other on the color wheel.



83, 10.002, 32.183



87, 9.166, 212.127

Rectangle

The Rectangle color scheme consists of four colors that form a rectangle on the color wheel.



83, 10.002, 32.183



83, 10.002, 82.183



83, 10.002, 212.183



83, 10.002, 262.183

Sweetspot

The Sweet Spot groups the original color and five complimentary colors.



83, 10.001, 32.197



98, 3.202, 31.901



83, 17.513, 329.074



52, 2.282, 31.943



0, 0.000, 0.000



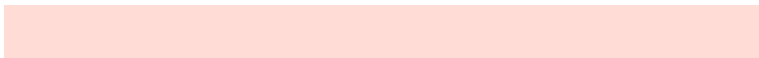
53, 0.007, 296.813

Same Dimension

The Same Dimension uses a secret algorithm to generate beautiful new colors.



83, 10.001, 32.197



90, 13.467, 32.278



87, 10.727, 86.664



45, 4.269, 32.098



38, 77.750, 41.839



8, 24.686, 29.075

Inverse Universe

The Inverse Universe completely reimagines the original color for something new.



87, 9.166, 212.127



96, 12.091, 212.139



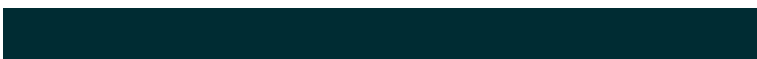
83, 10.649, 270.204



47, 4.015, 212.136



59, 33.508, 221.051



16, 14.207, 216.762

Previews

White Background



This preview shows how the CIELCh color 83, 10.002, 32.183 looks on a white background.

Color Contrast Check

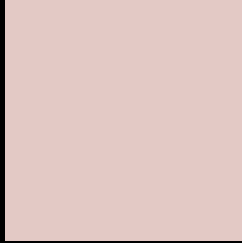
Large Text (above 18pt) WCAG AA × Fail

Any Text WCAG AA × Fail

Large Text (above 18pt) WCAG AAA × Fail

Any Text WCAG AAA × Fail

Black Background



This preview shows how the CIELCh color 83, 10.002, 32.183 looks on a black background.

Color Contrast Check

Large Text (above 18pt) WCAG AA ✓ Pass

Any Text WCAG AA ✓ Pass

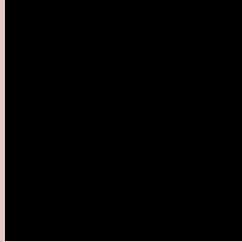
Large Text (above 18pt) WCAG AAA ✓ Pass

Any Text WCAG AAA ✓ Pass

If you want to check with other color combinations, try the [Color Contrast Checker](#).

CIELCh 83, 10.002, 32.183

Background



This preview shows how black text looks on a background with the CIELCh color 83, 10.002, 32.183.

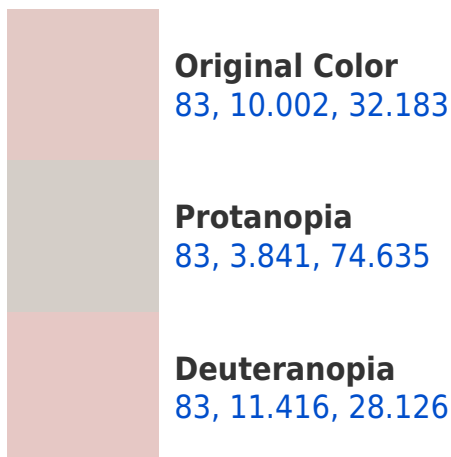


This preview shows how white text looks on a background with the CIELCh color 83, 10.002, 32.183.

Color Blindness Simulation

Color vision deficiency is a very complex topic, and I could not describe the different causes any better than Wikipedia does, so if you want to learn more, you should check out their [article about color blindness](#).

Dichromacy





Tritanopia
83, 14.142, 343.903

Trichromacy



Original Color
83, 10.002, 32.183

Protanomaly
83, 5.490, 48.253

Deuteranomaly
83, 11.035, 28.373

Tritanomaly
83, 11.709, 356.442

Monochromacy



Original Color
83, 10.002, 32.183

Achromatopsia
83, 0.010, 296.813

Achromatomaly
83, 3.709, 27.682

CSS Examples

Text

The CSS property to change the color of the text to CIELCh 83, 10.002, 32.183 is called "color". The color property can be set on classes, ids or directly on the HTML element.

This example shows how text in the color `rgb(227, 201, 197)` looks like.

```
.text, #text, p{  
    color:rgb(227, 201, 197)  
}
```

If you want to add a text shadow in that color use the text-shadow property, you can generate a text shadow directly with our [CSS Text Shadow Generator](#).

Here you see how black text with a 4 pixel rgb(227, 201, 197) colored shadow looks like.

```
.shadow{ text-shadow: 4px 4px 2px rgb(227, 201, 197) }
```

Border

The CSS property to change the border of an element to CIELCh 83, 10.002, 32.183 is called "border". The border property can be set on classes, ids or directly on the HTML element.

This example shows the color as border, it can be applied via the CSS property "border" or "border-color".

```
.border, #border, table{ border:4px solid rgb(227, 201, 197) }
```

If only the border color should be changed use the property border-color.

```
.border{ border-color:rgb(227, 201, 197) }
```

If you want to add a box shadow in that color use:

Here you see how a box with a 4 pixel rgb(227, 201, 197) colored shadow looks like.

```
.boxshadow{ -moz-box-shadow:4px 4px 4px  
4px rgb(227, 201, 197); -webkit-box-  
shadow:4px 4px 4px 4px rgb(227, 201, 197);  
box-shadow:4px 4px 4px 4px rgb(227, 201,  
197) }
```

Background

The CSS property to change the background color of an element to CIELCh 83, 10.002, 32.183 is called "background". The background property can be set on classes, ids or directly on the HTML element.

```
.background, #background, body{  
background: rgb(227, 201, 197) }
```

If only the background color should be changed can be used:

```
.background{ background-color: rgb(227,  
201, 197) }
```

This example shows the color as background, it is applied via the CSS property "background".

To optimize and compress your CSS code, you can use our [online CSS compressor and optimizer](#) based on csstidy. If you want to create a linear or radial gradient as background or border, check our [CSS Gradient Generator](#).

Hey! You found this booklet interesting? Support Converting Colors with the new Membership Option!

The pro membership hides all ads, plus gives you double the colors in the color bucket, and more awesome pro features!

[Learn more, Memberships starting at \\$2.50/m!](#)

**Follow me
on Twitter!**

@ConvertingColor