

Converting Colors

CIELCh(84, 10.191, 42.878)

Have a look what the booklet for
CIELCh(84, 10.191, 42.878) contains.

CIELCh(84, 10.113, 41.254)	3
<i>Conversions</i>	4
<i>Details</i>	6
<i>Harmonies</i>	11
<i>Previews</i>	20
<i>Color Blindness Simulation</i>	23
<i>CSS Examples</i>	26

Color

CIELCh(84, 10.113, 41.254)

Conversions

Conversions Part 1

Format	Color
Hex	E5CCC5
RGB	229, 204, 197
RGB Percent	90%, 80%, 77%
CMY	0.1008, 0.1989, 0.2264
CMYK	0.00, 0.11, 0.14, 0.10
HSL	13°, 38%, 84%
HSV	13°, 14%, 90%
XYZ	64.1720, 64.0658, 61.9717
YIQ	210.6770, 17.1470, 3.1230

Conversions

Conversions Part 2

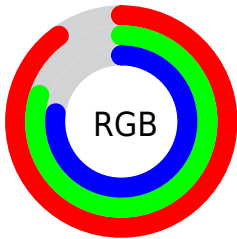
Format	Color
R _Y B	229, 206, 197
Decimal	15060165
CIE Lab	84.00, 7.60, 6.67
CIE LCh	84, 10.113, 41.254
Yxy	64.0658, 0.3374, 0.3368
Android (android.graphics.Color)	4293250245 (0xFFE5CCC5)
YUV	210.6770, -6.7428, 16.0693
Hunter-Lab	80.0411, 3.0383, 10.1235

Details

The CIELCh color **84, 10.113, 41.254** is a light color, and the websafe version is hex **CCCCCC**. A complement of this color would be **87, 9.259, 222.329**, and the grayscale version is **85, 0.010, 296.813**.

A 20% lighter version of the original color is **100, 0.496, 109.985**, and **64, 10.045, 42.823** is the 20% darker color. If you saturate the color by 10%, you get **79, 18.089, 41.152**, and if you desaturate by 10%, it is **89, 2.753, 41.356**.

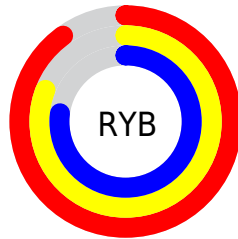
Distribution



Red (90%)

Green (80%)

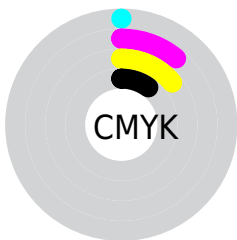
Blue (77%)



Red (90%)

Yellow (81%)

Blue (77%)

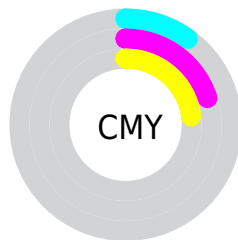


Cyan (0%)

Magenta (11%)

Yellow (14%)

Black (10%)



Cyan (10%)

Magenta (20%)

Yellow (23%)


Brightness & Saturation Gradients

These gradients show how the CIELCh color 84, 10.113, 41.254 changes by changing the brightness by 10 percent. The first figure shows a shift by +10% for each color and the second figure -10%.

Similar to the brightness gradients but the following saturation gradients show a change of the CIELCh color 84, 10.113, 41.254 by changing the saturation by 10% instead.

 84, 10.113, 41.254

 84, 10.113, 41.254

 100, 10.113,
41.254

 74, 10.113, 41.254

 64, 10.113, 41.254

 54, 10.113, 41.254

 44, 10.113, 41.254

 34, 10.113, 41.254

 24, 10.113, 41.254

 14, 10.113, 41.254

 4, 10.113, 41.254

 0, 10.113, 41.254

84, 10.113, 41.254

84, 10.113, 41.254

79, 18.089, 41.152

89, 2.753, 41.356

74, 26.733, 41.155

94, 4.045, 222.041

70, 36.068, 41.323

98, 8.758, 198.927

65, 46.072, 41.689

61, 56.645, 42.268

58, 67.523, 43.014

54, 78.098, 43.735

52, 87.043, 43.918

51, 91.260, 43.755

Harmonies

Complementary

The Complementary color scheme is a pair of colors which are on the opposite of each other on the color wheel.



84, 10.113, 41.254



87, 9.259, 222.329

Rectangle

The Rectangle color scheme consists of four colors that form a rectangle on the color wheel.



84, 10.113, 41.254



84, 10.113, 91.254



84, 10.113, 221.254



84, 10.113, 271.254

Sweetspot

The Sweet Spot groups the original color and five complimentary colors.



84, 10.112, 41.269



98, 3.032, 41.358



83, 17.596, 331.990



52, 2.162, 41.371



0, 0.000, 0.000



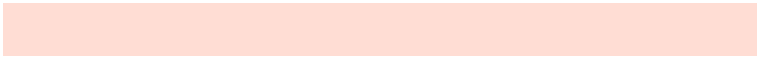
53, 0.007, 296.813

Same Dimension

The Same Dimension uses a secret algorithm to generate beautiful new colors.



84, 10.112, 41.269



91, 13.597, 41.223



88, 12.392, 93.197



45, 4.042, 41.338



40, 75.248, 44.179



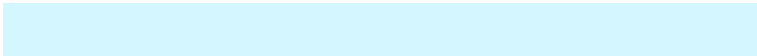
9, 23.373, 34.482

Inverse Universe

The Inverse Universe completely reimagines the original color for something new.



87, 9.259, 222.329



95, 12.183, 222.492



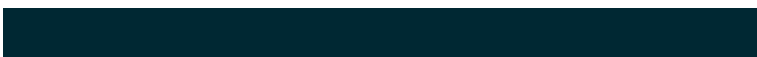
83, 12.458, 276.780



47, 3.814, 222.139



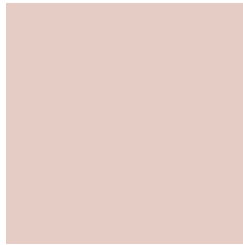
54, 33.998, 239.545



14, 14.024, 232.222

Previews

White Background



This preview shows how the CIELCh color 84, 10.113, 41.254 looks on a white background.

Color Contrast Check

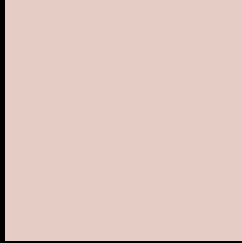
Large Text (above 18pt) WCAG AA × Fail

Any Text WCAG AA × Fail

Large Text (above 18pt) WCAG AAA × Fail

Any Text WCAG AAA × Fail

Black Background



This preview shows how the CIELCh color 84, 10.113, 41.254 looks on a black background.

Color Contrast Check

Large Text (above 18pt) WCAG AA ✓ Pass

Any Text WCAG AA ✓ Pass

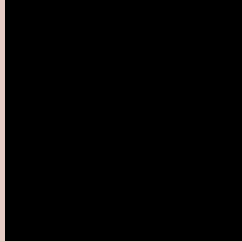
Large Text (above 18pt) WCAG AAA ✓ Pass

Any Text WCAG AAA ✓ Pass

If you want to check with other color combinations, try the [Color Contrast Checker](#).

CIELCh 84, 10.113, 41.254

Background



This preview shows how black text looks on a background with the CIELCh color 84, 10.113, 41.254.

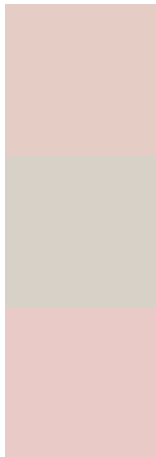


This preview shows how white text looks on a background with the CIELCh color 84, 10.113, 41.254.

Color Blindness Simulation

Color vision deficiency is a very complex topic, and I could not describe the different causes any better than Wikipedia does, so if you want to learn more, you should check out their [article about color blindness](#).

Dichromacy



Original Color

84, 10.113, 41.254

Protanopia

84, 5.373, 80.877

Deuteranopia

84, 12.258, 30.079



Tritanopia
84, 14.105, 343.887

Trichromacy



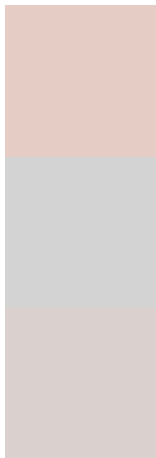
Original Color
84, 10.113, 41.254

Protanomaly
84, 6.689, 58.480

Deuteranomaly
84, 11.242, 33.604

Tritanomaly
84, 11.488, 358.839

Monochromacy



Original Color
84, 10.113, 41.254

Achromatopsia
85, 0.010, 296.813

Achromatomaly
84, 3.648, 45.024

CSS Examples

Text

The CSS property to change the color of the text to CIELCh 84, 10.113, 41.254 is called "color". The color property can be set on classes, ids or directly on the HTML element.

This example shows how text in the color `rgb(229, 204, 197)` looks like.

```
.text, #text, p{  
    color:rgb(229, 204, 197)  
}
```

If you want to add a text shadow in that color use the text-shadow property, you can generate a text shadow directly with our [CSS Text Shadow Generator](#).

Here you see how black text with a 4 pixel rgb(229, 204, 197) colored shadow looks like.

```
.shadow{ text-shadow: 4px 4px 2px rgb(229, 204, 197) }
```

Border

The CSS property to change the border of an element to CIELCh 84, 10.113, 41.254 is called "border". The border property can be set on classes, ids or directly on the HTML element.

This example shows the color as border, it can be applied via the CSS property "border" or "border-color".

```
.border, #border, table{ border:4px solid rgb(229, 204, 197) }
```

If only the border color should be changed use the property `border-color`.

```
.border{ border-color:rgb(229, 204, 197) }
```

If you want to add a box shadow in that color use:

Here you see how a box with a 4 pixel `rgb(229, 204, 197)` colored shadow looks like.

```
.boxshadow{ -moz-box-shadow:4px 4px 4px  
4px rgb(229, 204, 197); -webkit-box-  
shadow:4px 4px 4px 4px rgb(229, 204, 197);  
box-shadow:4px 4px 4px 4px rgb(229, 204,  
197) }
```

Background

The CSS property to change the background color of an element to CIELCh 84, 10.113, 41.254 is called "background". The background property can be set on classes, ids or directly on the HTML element.

```
.background, #background, body{  
background: rgb(229, 204, 197) }
```

If only the background color should be changed can be used:

```
.background{ background-color: rgb(229,  
204, 197) }
```

This example shows the color as background, it is applied via the CSS property "background".

To optimize and compress your CSS code, you can use our [online CSS compressor and optimizer](#) based on csstidy. If you want to create a linear or radial gradient as background or border, check our [CSS Gradient Generator](#).

Hey! You found this booklet interesting? Support Converting Colors with the new Membership Option!

The pro membership hides all ads, plus gives you double the colors in the color bucket, and more awesome pro features!

[Learn more, Memberships starting at \\$2.50/m!](#)

**Follow me
on Twitter!**

@ConvertingColor