

Converting Colors

CIELCh(84, 10.455, 10.793)

Have a look what the booklet for
CIELCh(84, 10.455, 10.793) contains.

CIELCh(84, 10.508, 11.572)	3
<i>Conversions</i>	4
<i>Details</i>	6
<i>Harmonies</i>	11
<i>Previews</i>	20
<i>Color Blindness Simulation</i>	23
<i>CSS Examples</i>	26

Color

CIELCh(84, 10.508, 11.572)

Conversions

Conversions Part 1

Format	Color
Hex	E7CBCE
RGB	231, 203, 206
RGB Percent	91%, 80%, 81%
CMY	0.0946, 0.2044, 0.1927
CMYK	0.00, 0.12, 0.11, 0.09
HSL	354°, 37%, 85%
HSV	354°, 12%, 91%
XYZ	65.3605, 64.0658, 67.2294
YIQ	211.7140, 15.7250, 6.8690

Conversions

Conversions Part 2

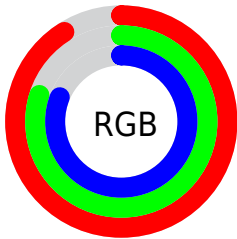
Format	Color
R _Y B	231, 203, 206
Decimal	15190990
CIE Lab	84.00, 10.29, 2.11
CIE LCh	84, 10.508, 11.572
Yxy	64.0658, 0.3324, 0.3258
Android (android.graphics.Color)	4293381070 (0xFFE7CBCE)
YUV	211.7140, -2.8170, 16.9138
Hunter-Lab	80.0411, 5.6889, 6.2290

Details

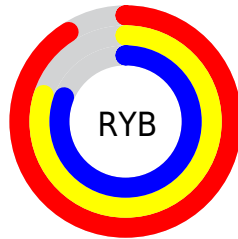
The CIELCh color **84, 10.508, 11.572** is a light color, and the websafe version is hex **FFCCCC**. A complement of this color would be **90, 9.876, 189.686**, and the grayscale version is **85, 0.010, 296.813**.

A 20% lighter version of the original color is **100, 0.012, 296.813**, and **64, 10.373, 11.178** is the 20% darker color. If you saturate the color by 10%, you get **78, 19.790, 12.686**, and if you desaturate by 10%, it is **90, 1.784, 10.418**.

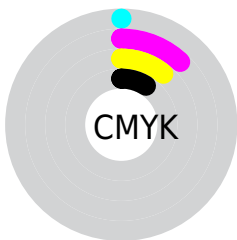
Distribution



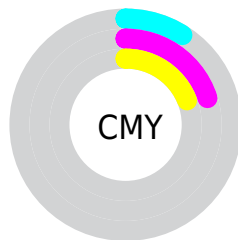
- Red (91%)
- Green (80%)
- Blue (81%)



- Red (91%)
- Yellow (80%)
- Blue (81%)



- Cyan (0%)
- Magenta (12%)
- Yellow (11%)
- Black (9%)



- Cyan (9%)
- Magenta (20%)
- Yellow (19%)


Brightness & Saturation Gradients

These gradients show how the CIELCh color 84, 10.508, 11.572 changes by changing the brightness by 10 percent. The first figure shows a shift by +10% for each color and the second figure -10%.

Similar to the brightness gradients but the following saturation gradients show a change of the CIELCh color 84, 10.508, 11.572 by changing the saturation by 10% instead.

 84, 10.508, 11.572

 84, 10.508, 11.572

 100, 10.508,
11.572

 74, 10.508, 11.572

 64, 10.508, 11.572

 54, 10.508, 11.572

 44, 10.508, 11.572

 34, 10.508, 11.572

 24, 10.508, 11.572

 14, 10.508, 11.572

 4, 10.508, 11.572

 0, 10.508, 11.572

84, 10.508, 11.572

84, 10.508, 11.572

78, 19.790, 12.686

90, 1.784, 10.418

72, 29.592, 14.027

97, 6.381, 190.103

66, 39.797, 15.704

98, 8.233, 198.965

61, 50.192, 17.831

57, 60.470, 20.544

53, 70.270, 23.966

51, 79.258, 28.120

49, 87.127, 32.751

48, 92.298, 36.134

Harmonies

Complementary

The Complementary color scheme is a pair of colors which are on the opposite of each other on the color wheel.



84, 10.508, 11.572



90, 9.876, 189.686

Rectangle

The Rectangle color scheme consists of four colors that form a rectangle on the color wheel.



84, 10.508, 11.572



84, 10.508, 61.572



84, 10.508, 191.572



84, 10.508, 241.572

Sweetspot

The Sweet Spot groups the original color and five complimentary colors.



84, 10.506, 11.582



97, 3.660, 10.733



84, 17.228, 321.809



51, 2.607, 10.824



0, 0.000, 0.000



53, 0.007, 296.813

Same Dimension

The Same Dimension uses a secret algorithm to generate beautiful new colors.



84, 10.506, 11.582



90, 14.224, 11.890



87, 8.529, 60.638



45, 4.855, 11.312



37, 75.456, 35.361



6, 26.805, 17.323

Inverse Universe

The Inverse Universe completely reimagines the original color for something new.



84, 10.506, 11.582



90, 14.224, 11.890



87, 8.090, 243.263



45, 4.855, 11.312



37, 75.456, 35.361



6, 26.805, 17.323

Previews

White Background



This preview shows how the CIELCh color 84, 10.508, 11.572 looks on a white background.

Color Contrast Check

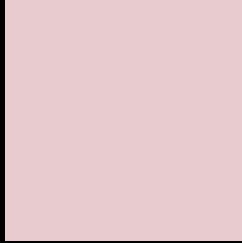
Large Text (above 18pt) WCAG AA × Fail

Any Text WCAG AA × Fail

Large Text (above 18pt) WCAG AAA × Fail

Any Text WCAG AAA × Fail

Black Background



This preview shows how the CIELCh color 84, 10.508, 11.572 looks on a black background.

Color Contrast Check

Large Text (above 18pt) WCAG AA ✓ Pass

Any Text WCAG AA ✓ Pass

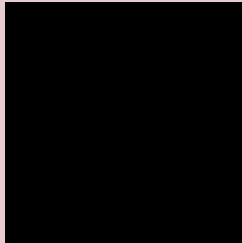
Large Text (above 18pt) WCAG AAA ✓ Pass

Any Text WCAG AAA ✓ Pass

If you want to check with other color combinations, try the [Color Contrast Checker](#).

CIELCh 84, 10.508, 11.572

Background



This preview shows how black text looks on a background with the CIELCh color 84, 10.508, 11.572.



This preview shows how white text looks on a background with the CIELCh color 84, 10.508, 11.572.

Color Blindness Simulation

Color vision deficiency is a very complex topic, and I could not describe the different causes any better than Wikipedia does, so if you want to learn more, you should check out their [article about color blindness](#).

Dichromacy



Original Color

84, 10.508, 11.572

Protanopia

84, 1.456, 19.122

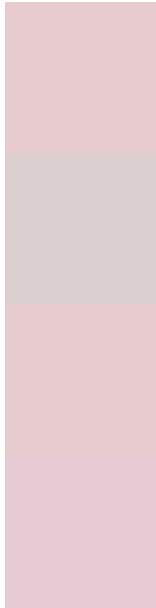
Deuteranopia

84, 10.508, 11.572



Tritanopia
84, 14.105, 343.887

Trichromacy



Original Color
84, 10.508, 11.572

Protanomaly
84, 4.432, 12.808

Deuteranomaly
84, 10.508, 11.572

Tritanomaly
84, 12.441, 352.701

Monochromacy



Original Color
84, 10.508, 11.572

Achromatopsia
85, 0.010, 296.813

Achromatomaly
85, 3.694, 11.362

CSS Examples

Text

The CSS property to change the color of the text to CIELCh 84, 10.508, 11.572 is called "color". The color property can be set on classes, ids or directly on the HTML element.

This example shows how text in the color `rgb(231, 203, 206)` looks like.

```
.text, #text, p{  
    color:rgb(231, 203, 206)  
}
```

If you want to add a text shadow in that color use the text-shadow property, you can generate a text shadow directly with our [CSS Text Shadow Generator](#).

Here you see how black text with a 4 pixel rgb(231, 203, 206) colored shadow looks like.

```
.shadow{ text-shadow: 4px 4px 2px rgb(231, 203, 206) }
```

Border

The CSS property to change the border of an element to CIELCh 84, 10.508, 11.572 is called "border". The border property can be set on classes, ids or directly on the HTML element.

This example shows the color as border, it can be applied via the CSS property "border" or "border-color".

```
.border, #border, table{ border:4px solid rgb(231, 203, 206) }
```

If only the border color should be changed use the property `border-color`.

```
.border{ border-color:rgb(231, 203, 206) }
```

If you want to add a box shadow in that color use:

Here you see how a box with a 4 pixel `rgb(231, 203, 206)` colored shadow looks like.

```
.boxshadow{ -moz-box-shadow:4px 4px 4px  
4px rgb(231, 203, 206); -webkit-box-  
shadow:4px 4px 4px 4px rgb(231, 203, 206);  
box-shadow:4px 4px 4px 4px rgb(231, 203,  
206) }
```

Background

The CSS property to change the background color of an element to CIELCh 84, 10.508, 11.572 is called "background". The background property can be set on classes, ids or directly on the HTML element.

```
.background, #background, body{  
background: rgb(231, 203, 206) }
```

If only the background color should be changed can be used:

```
.background{ background-color: rgb(231,  
203, 206) }
```

This example shows the color as background, it is applied via the CSS property "background".

To optimize and compress your CSS code, you can use our [online CSS compressor and optimizer](#) based on csstidy. If you want to create a linear or radial gradient as background or border, check our [CSS Gradient Generator](#).

Hey! You found this booklet interesting? Support Converting Colors with the new Membership Option!

The pro membership hides all ads, plus gives you double the colors in the color bucket, and more awesome pro features!

[Learn more, Memberships starting at \\$2.50/m!](#)

**Follow me
on Twitter!**

@ConvertingColor