

Converting Colors

CIELCh(84, 11.348, 67.330)

Have a look what the booklet for
CIELCh(84, 11.348, 67.330) contains.

CIELCh(84, 11.348, 67.330)	3
<i>Conversions</i>	4
<i>Details</i>	6
<i>Harmonies</i>	11
<i>Previews</i>	20
<i>Color Blindness Simulation</i>	23
<i>CSS Examples</i>	26

Color

CIELCh(84, 11.348, 67.330)

Conversions

Conversions Part 1

Format	Color
Hex	E2CEBE
RGB	226, 206, 190
RGB Percent	89%, 81%, 75%
CMY	0.1135, 0.1919, 0.2547
CMYK	0.00, 0.09, 0.16, 0.11
HSL	27°, 38%, 82%
HSV	27°, 16%, 89%
XYZ	62.7651, 64.0658, 57.8033
YIQ	210.1560, 17.0560, -0.7360

Conversions

Conversions Part 2

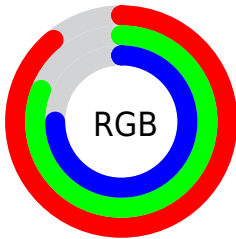
Format	Color
R _Y B	226, 219, 190
Decimal	14864062
CIE Lab	84.00, 4.37, 10.47
CIE LCh	84, 11.348, 67.330
Yxy	64.0658, 0.3399, 0.3470
Android (android.graphics.Color)	4293054142 (0xFFE2CEBE)
YUV	210.1560, -9.9369, 13.8952
Hunter-Lab	80.0411, -0.0991, 13.2113

Details

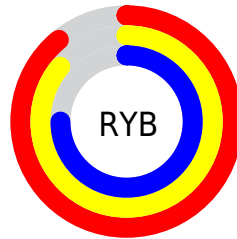
The CIELCh color **84, 11.348, 67.330** is a light color, and the websafe version is hex **CCCCCC**. A complement of this color would be **83, 10.735, 251.297**, and the grayscale version is **84, 0.010, 296.813**.

A 20% lighter version of the original color is **100, 4.553, 109.821**, and **64, 11.112, 68.109** is the 20% darker color. If you saturate the color by 10%, you get **80, 19.009, 66.225**, and if you desaturate by 10%, it is **88, 4.104, 68.409**.

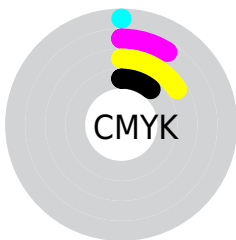
Distribution



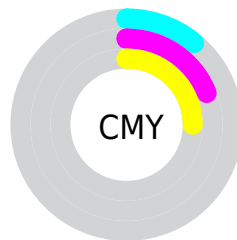
- Red (89%)
- Green (81%)
- Blue (75%)



- Red (89%)
- Yellow (86%)
- Blue (75%)



- Cyan (0%)
- Magenta (9%)
- Yellow (16%)
- Black (11%)



- Cyan (11%)
- Magenta (19%)
- Yellow (25%)


Brightness & Saturation Gradients

These gradients show how the CIELCh color 84, 11.348, 67.330 changes by changing the brightness by 10 percent. The first figure shows a shift by +10% for each color and the second figure -10%.

Similar to the brightness gradients but the following saturation gradients show a change of the CIELCh color 84, 11.348, 67.330 by changing the saturation by 10% instead.

 84, 11.348, 67.330

 84, 11.348, 67.330

 100, 11.348,
67.330

 74, 11.348, 67.330

 64, 11.348, 67.330

 54, 11.348, 67.330

 44, 11.348, 67.330

 34, 11.348, 67.330

 24, 11.348, 67.330

 14, 11.348, 67.330

 4, 11.348, 67.330

 0, 11.348, 67.330

84, 11.348, 67.330

84, 11.348, 67.330

80, 19.009, 66.225

88, 4.104, 68.409

77, 27.114, 65.107

91, 2.761, 249.808

73, 35.669, 64.003

95, 8.238, 243.950

70, 44.630, 62.907

98, 9.825, 198.852

67, 53.858, 61.789

64, 63.017, 60.556

61, 71.410, 58.999

58, 77.887, 56.733

57, 80.120, 55.728

Harmonies

Complementary

The Complementary color scheme is a pair of colors which are on the opposite of each other on the color wheel.



84, 11.348, 67.330



83, 10.735, 251.297

Rectangle

The Rectangle color scheme consists of four colors that form a rectangle on the color wheel.



84, 11.348, 67.330



84, 11.348, 117.330



84, 11.348, 247.330



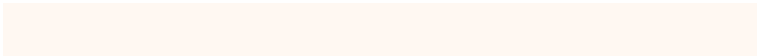
84, 11.348, 297.330

Sweetspot

The Sweet Spot groups the original color and five complimentary colors.



84, 11.348, 67.344



98, 3.808, 68.490



81, 17.070, 341.488



52, 2.604, 68.427



0, 0.000, 0.000



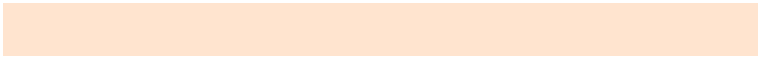
53, 0.007, 296.813

Same Dimension

The Same Dimension uses a secret algorithm to generate beautiful new colors.



84, 11.348, 67.344



92, 15.065, 66.987



88, 17.429, 105.731



45, 3.949, 68.052



45, 66.130, 56.403



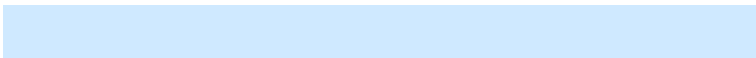
11, 19.751, 54.061

Inverse Universe

The Inverse Universe completely reimagines the original color for something new.



83, 10.735, 251.297



91, 14.072, 251.784



79, 17.984, 289.191



45, 3.830, 250.409



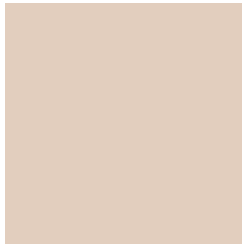
41, 48.693, 277.879



9, 17.294, 268.132

Previews

White Background



This preview shows how the CIELCh color 84, 11.348, 67.330 looks on a white background.

Color Contrast Check

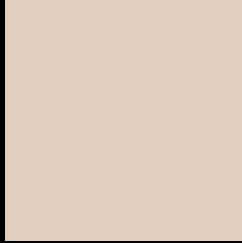
Large Text (above 18pt) WCAG AA × Fail

Any Text WCAG AA × Fail

Large Text (above 18pt) WCAG AAA × Fail

Any Text WCAG AAA × Fail

Black Background



This preview shows how the CIELCh color 84, 11.348, 67.330 looks on a black background.

Color Contrast Check

Large Text (above 18pt) WCAG AA ✓ Pass

Any Text WCAG AA ✓ Pass

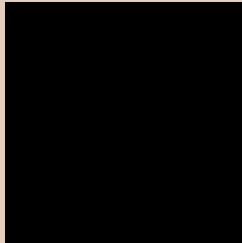
Large Text (above 18pt) WCAG AAA ✓ Pass

Any Text WCAG AAA ✓ Pass

If you want to check with other color combinations, try the [Color Contrast Checker](#).

CIELCh 84, 11.348, 67.330

Background



This preview shows how black text looks on a background with the CIELCh color 84, 11.348, 67.330.



This preview shows how white text looks on a background with the CIELCh color 84, 11.348, 67.330.

Color Blindness Simulation

Color vision deficiency is a very complex topic, and I could not describe the different causes any better than Wikipedia does, so if you want to learn more, you should check out their [article about color blindness](#).

Dichromacy



Original Color
84, 11.348, 67.330

Protanopia
84, 9.534, 88.564

Deuteranopia
84, 14.628, 43.414



Tritanopia
84, 13.232, 340.925

Trichromacy



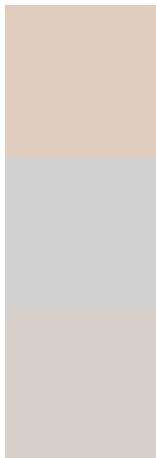
Original Color
84, 11.348, 67.330

Protanomaly
84, 10.184, 80.517

Deuteranomaly
84, 13.104, 48.729

Tritanomaly
84, 9.958, 4.862

Monochromacy



Original Color
84, 11.348, 67.330

Achromatopsia
84, 0.010, 296.813

Achromatomaly
84, 4.054, 70.341

CSS Examples

Text

The CSS property to change the color of the text to CIELCh 84, 11.348, 67.330 is called "color". The color property can be set on classes, ids or directly on the HTML element.

This example shows how text in the color `rgb(226, 206, 190)` looks like.

```
.text, #text, p{  
    color:rgb(226, 206, 190)  
}
```

If you want to add a text shadow in that color use the text-shadow property, you can generate a text shadow directly with our [CSS Text Shadow Generator](#).

Here you see how black text with a 4 pixel rgb(226, 206, 190) colored shadow looks like.

```
.shadow{ text-shadow: 4px 4px 2px rgb(226, 206, 190) }
```

Border

The CSS property to change the border of an element to CIELCh 84, 11.348, 67.330 is called "border". The border property can be set on classes, ids or directly on the HTML element.

This example shows the color as border, it can be applied via the CSS property "border" or "border-color".

```
.border, #border, table{ border:4px solid rgb(226, 206, 190) }
```

If only the border color should be changed use the property `border-color`.

```
.border{ border-color:rgb(226, 206, 190) }
```

If you want to add a box shadow in that color use:

Here you see how a box with a 4 pixel `rgb(226, 206, 190)` colored shadow looks like.

```
.boxshadow{ -moz-box-shadow:4px 4px 4px 4px rgb(226, 206, 190); -webkit-box-shadow:4px 4px 4px 4px rgb(226, 206, 190); box-shadow:4px 4px 4px 4px rgb(226, 206, 190) }
```

Background

The CSS property to change the background color of an element to CIELCh 84, 11.348, 67.330 is called "background". The background property can be set on classes, ids or directly on the HTML element.

```
.background, #background, body{  
background: rgb(226, 206, 190) }
```

If only the background color should be changed can be used:

```
.background{ background-color: rgb(226,  
206, 190) }
```

This example shows the color as background, it is applied via the CSS property "background".

To optimize and compress your CSS code, you can use our [online CSS compressor and optimizer](#) based on csstidy. If you want to create a linear or radial gradient as background or border, check our [CSS Gradient Generator](#).

Hey! You found this booklet interesting? Support Converting Colors with the new Membership Option!

The pro membership hides all ads, plus gives you double the colors in the color bucket, and more awesome pro features!

[Learn more, Memberships starting at \\$2.50/m!](#)

**Follow me
on Twitter!**

@ConvertingColor