

Converting Colors

CIELCh(84, 11.730, 59.999)

Have a look what the booklet for
CIELCh(84, 11.730, 59.999) contains.

CIELCh(84, 11.747, 58.484)	3
<i>Conversions</i>	4
<i>Details</i>	6
<i>Harmonies</i>	11
<i>Previews</i>	20
<i>Color Blindness Simulation</i>	23
<i>CSS Examples</i>	26

Color

CIELCh(84, 11.747, 58.484)

Conversions

Conversions Part 1

Format	Color
Hex	E5CDBF
RGB	229, 205, 191
RGB Percent	90%, 80%, 75%
CMY	0.1021, 0.1962, 0.2511
CMYK	0.00, 0.10, 0.17, 0.10
HSL	22°, 42%, 82%
HSV	22°, 17%, 90%
XYZ	63.5323, 64.0658, 58.2941
YIQ	210.5800, 18.7980, 0.7340

Conversions

Conversions Part 2

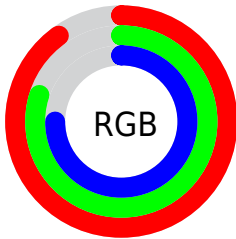
Format	Color
R_{YB}	229, 213, 191
Decimal	15060415
CIE Lab	84.00, 6.14, 10.01
CIE LCh	84, 11.747, 58.484
Yxy	64.0658, 0.3418, 0.3446
Android (android.graphics.Color)	4293250495 (0xFFE5CDBF)
YUV	210.5800, -9.6529, 16.1543
Hunter-Lab	80.0411, 1.6117, 12.8477

Details

The CIELCh color **84, 11.747, 58.484** is a light color, and the websafe version is hex **CCCCCC**. A complement of this color would be **85, 10.858, 241.930**, and the grayscale version is **84, 0.010, 296.813**.

A 20% lighter version of the original color is **100, 4.046, 109.857**, and **64, 11.533, 58.552** is the 20% darker color. If you saturate the color by 10%, you get **80, 19.488, 57.644**, and if you desaturate by 10%, it is **88, 4.512, 59.333**.

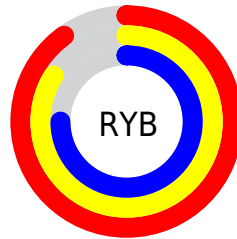
Distribution



Red (90%)

Green (80%)

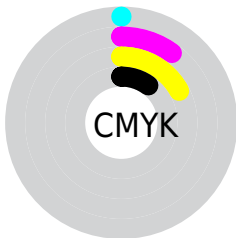
Blue (75%)



Red (90%)

Yellow (84%)

Blue (75%)

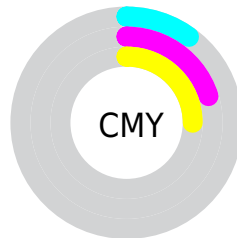


Cyan (0%)

Magenta (10%)

Yellow (17%)

Black (10%)



Cyan (10%)

Magenta (20%)

Yellow (25%)

Brightness & Saturation Gradients

These gradients show how the CIELCh color 84, 11.747, 58.484 changes by changing the brightness by 10 percent. The first figure shows a shift by +10% for each color and the second figure -10%.

Similar to the brightness gradients but the following saturation gradients show a change of the CIELCh color 84, 11.747, 58.484 by changing the saturation by 10% instead.

84, 11.747, 58.484

84, 11.747, 58.484

100, 11.747,
58.484

74, 11.747, 58.484

64, 11.747, 58.484

54, 11.747, 58.484

44, 11.747, 58.484

34, 11.747, 58.484

24, 11.747, 58.484

14, 11.747, 58.484

4, 11.747, 58.484

0, 11.747, 58.484

84, 11.747, 58.484

84, 11.747, 58.484

80, 19.488, 57.644

88, 4.512, 59.333

76, 27.774, 56.832

92, 2.265, 240.601

72, 36.624, 56.080

97, 7.356, 226.705

68, 46.007, 55.391

98, 8.861, 198.920

65, 55.797, 54.736

62, 65.667, 54.022

59, 74.888, 53.011

56, 82.172, 51.250

55, 84.348, 50.624

Harmonies

Complementary

The Complementary color scheme is a pair of colors which are on the opposite of each other on the color wheel.



84, 11.747, 58.484



85, 10.858, 241.930

Rectangle

The Rectangle color scheme consists of four colors that form a rectangle on the color wheel.



84, 11.747, 58.484



84, 11.747, 108.484



84, 11.747, 238.484



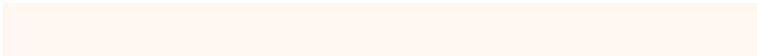
84, 11.747, 288.484

Sweetspot

The Sweet Spot groups the original color and five complimentary colors.



84, 11.747, 58.497



98, 3.712, 59.441



81, 18.827, 338.341



52, 2.539, 59.394



0, 0.000, 0.000



53, 0.007, 296.813

Same Dimension

The Same Dimension uses a secret algorithm to generate beautiful new colors.



84, 11.747, 58.497



91, 15.637, 58.194



89, 17.159, 102.323



46, 3.931, 59.106



43, 69.616, 51.239



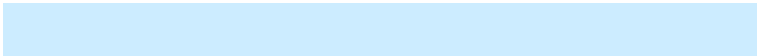
10, 21.539, 46.853

Inverse Universe

The Inverse Universe completely reimagines the original color for something new.



85, 10.858, 241.930



92, 14.187, 242.398



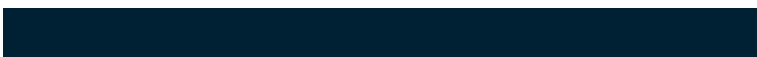
80, 17.615, 286.145



46, 3.769, 241.100



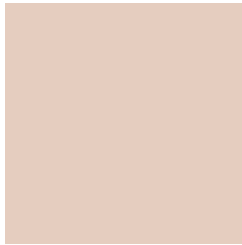
46, 42.279, 267.627



11, 16.006, 258.138

Previews

White Background



This preview shows how the CIELCh color 84, 11.747, 58.484 looks on a white background.

Color Contrast Check

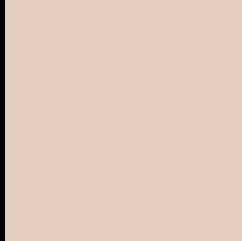
Large Text (above 18pt) WCAG AA × Fail

Any Text WCAG AA × Fail

Large Text (above 18pt) WCAG AAA × Fail

Any Text WCAG AAA × Fail

Black Background



This preview shows how the CIELCh color 84, 11.747, 58.484 looks on a black background.

Color Contrast Check

Large Text (above 18pt) WCAG AA ✓ Pass

Any Text WCAG AA ✓ Pass

Large Text (above 18pt) WCAG AAA ✓ Pass

Any Text WCAG AAA ✓ Pass

If you want to check with other color combinations, try the [Color Contrast Checker](#).

CIELCh 84, 11.747, 58.484

Background



This preview shows how black text looks on a background with the CIELCh color 84, 11.747, 58.484.

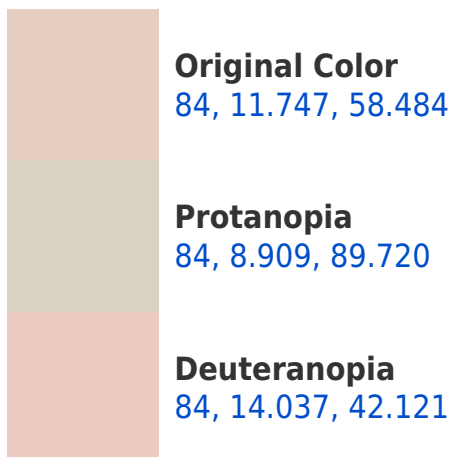


This preview shows how white text looks on a background with the CIELCh color 84, 11.747, 58.484.

Color Blindness Simulation

Color vision deficiency is a very complex topic, and I could not describe the different causes any better than Wikipedia does, so if you want to learn more, you should check out their [article about color blindness](#).

Dichromacy





Tritanopia
84, 14.105, 343.887

Trichromacy



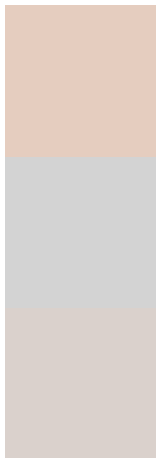
Original Color
84, 11.747, 58.484

Protanomaly
84, 9.722, 79.108

Deuteranomaly
84, 12.837, 46.751

Tritanomaly
84, 11.178, 3.892

Monochromacy



Original Color
84, 11.747, 58.484

Achromatopsia
85, 0.010, 296.813

Achromatomaly
84, 4.213, 57.965

CSS Examples

Text

The CSS property to change the color of the text to CIELCh 84, 11.747, 58.484 is called "color". The color property can be set on classes, ids or directly on the HTML element.

This example shows how text in the color `rgb(229, 205, 191)` looks like.

```
.text, #text, p{  
    color:rgb(229, 205, 191)  
}
```

If you want to add a text shadow in that color use the text-shadow property, you can generate a text shadow directly with our [CSS Text Shadow Generator](#).

Here you see how black text with a 4 pixel rgb(229, 205, 191) colored shadow looks like.

```
.shadow{ text-shadow: 4px 4px 2px rgb(229, 205, 191) }
```

Border

The CSS property to change the border of an element to CIELCh 84, 11.747, 58.484 is called "border". The border property can be set on classes, ids or directly on the HTML element.

This example shows the color as border, it can be applied via the CSS property "border" or "border-color".

```
.border, #border, table{ border:4px solid rgb(229, 205, 191) }
```

If only the border color should be changed use the property `border-color`.

```
.border{ border-color:rgb(229, 205, 191) }
```

If you want to add a box shadow in that color use:

Here you see how a box with a 4 pixel `rgb(229, 205, 191)` colored shadow looks like.

```
.boxshadow{ -moz-box-shadow:4px 4px 4px 4px rgb(229, 205, 191); -webkit-box-shadow:4px 4px 4px 4px rgb(229, 205, 191); box-shadow:4px 4px 4px 4px rgb(229, 205, 191) }
```

Background

The CSS property to change the background color of an element to CIELCh 84, 11.747, 58.484 is called "background". The background property can be set on classes, ids or directly on the HTML element.

```
.background, #background, body{  
background: rgb(229, 205, 191) }
```

If only the background color should be changed can be used:

```
.background{ background-color: rgb(229,  
205, 191) }
```

This example shows the color as background, it is applied via the CSS property "background".

To optimize and compress your CSS code, you can use our [online CSS compressor and optimizer](#) based on csstidy. If you want to create a linear or radial gradient as background or border, check our [CSS Gradient Generator](#).

Hey! You found this booklet interesting? Support Converting Colors with the new Membership Option!

The pro membership hides all ads, plus gives you double the colors in the color bucket, and more awesome pro features!

[Learn more, Memberships starting at \\$2.50/m!](#)

**Follow me
on Twitter!**

@ConvertingColor