

Converting Colors

CIELCh(84, 11.752, 64.102)

Have a look what the booklet for
CIELCh(84, 11.752, 64.102) contains.

CIELCh(84, 11.885, 64.589)	3
<i>Conversions</i>	4
<i>Details</i>	6
<i>Harmonies</i>	11
<i>Previews</i>	20
<i>Color Blindness Simulation</i>	23
<i>CSS Examples</i>	26

Color

CIELCh(84, 11.885, 64.589)

Conversions

Conversions Part 1

Format	Color
Hex	E4CEBE
RGB	228, 206, 190
RGB Percent	89%, 81%, 75%
CMY	0.1076, 0.1938, 0.2565
CMYK	0.00, 0.10, 0.17, 0.11
HSL	25°, 41%, 82%
HSV	25°, 17%, 89%
XYZ	63.0797, 64.0658, 57.5212
YIQ	210.7540, 18.2480, -0.3120

Conversions

Conversions Part 2

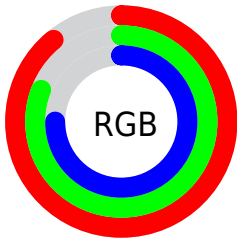
Format	Color
R _Y B	228, 218, 190
Decimal	14995134
CIE Lab	84.00, 5.10, 10.74
CIE LCh	84, 11.885, 64.589
Yxy	64.0658, 0.3416, 0.3469
Android (android.graphics.Color)	4293185214 (0xFFE4CEBE)
YUV	210.7540, -10.2317, 15.1247
Hunter-Lab	80.0411, 0.6024, 13.4203

Details

The CIELCh color **84, 11.885, 64.589** is a light color, and the websafe version is hex **CCCCCC**. A complement of this color would be **84, 11.136, 248.578**, and the grayscale version is **84, 0.010, 296.813**.

A 20% lighter version of the original color is **100, 4.553, 109.821**, and **64, 11.681, 65.094** is the 20% darker color. If you saturate the color by 10%, you get **80, 19.595, 63.553**, and if you desaturate by 10%, it is **88, 4.622, 65.616**.

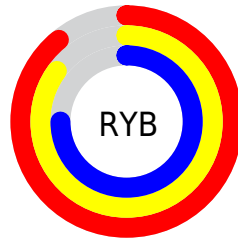
Distribution



Red (89%)

Green (81%)

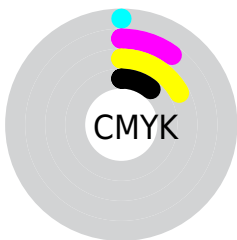
Blue (75%)



Red (89%)

Yellow (85%)

Blue (75%)

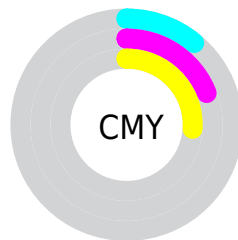


Cyan (0%)

Magenta (10%)

Yellow (17%)

Black (11%)



Cyan (11%)

Magenta (19%)

Yellow (26%)


Brightness & Saturation Gradients

These gradients show how the CIELCh color 84, 11.885, 64.589 changes by changing the brightness by 10 percent. The first figure shows a shift by +10% for each color and the second figure -10%.

Similar to the brightness gradients but the following saturation gradients show a change of the CIELCh color 84, 11.885, 64.589 by changing the saturation by 10% instead.

 84, 11.885, 64.589

 84, 11.885, 64.589

 100, 11.885,
64.589

 74, 11.885, 64.589

 64, 11.885, 64.589

 54, 11.885, 64.589

 44, 11.885, 64.589

 34, 11.885, 64.589

 24, 11.885, 64.589

 14, 11.885, 64.589

 4, 11.885, 64.589

 0, 11.885, 64.589

84, 11.885, 64.589

84, 11.885, 64.589

80, 19.595, 63.553

88, 4.622, 65.616

77, 27.784, 62.517

92, 2.234, 247.006

73, 36.460, 61.508

96, 7.740, 240.262

70, 45.582, 60.521

98, 9.325, 198.887

66, 55.006, 59.525

63, 64.384, 58.419

60, 72.983, 56.977

58, 79.608, 54.793

57, 81.535, 54.040

Harmonies

Complementary

The Complementary color scheme is a pair of colors which are on the opposite of each other on the color wheel.



84, 11.885, 64.589



84, 11.136, 248.578

Rectangle

The Rectangle color scheme consists of four colors that form a rectangle on the color wheel.



84, 11.885, 64.589



84, 11.885, 114.589



84, 11.885, 244.589



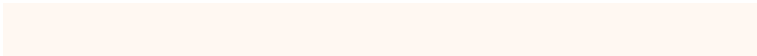
84, 11.885, 294.589

Sweetspot

The Sweet Spot groups the original color and five complimentary colors.



84, 11.885, 64.602



98, 3.769, 65.761



81, 18.204, 340.726



52, 2.577, 65.702



0, 0.000, 0.000



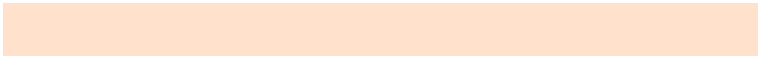
53, 0.007, 296.813

Same Dimension

The Same Dimension uses a secret algorithm to generate beautiful new colors.



84, 11.885, 64.602



92, 15.782, 64.242



89, 18.060, 104.860



46, 3.985, 65.348



45, 67.662, 54.679



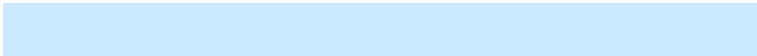
11, 21.144, 52.137

Inverse Universe

The Inverse Universe completely reimagines the original color for something new.



84, 11.136, 248.578



91, 14.567, 249.092



79, 18.636, 288.549



46, 3.850, 247.619



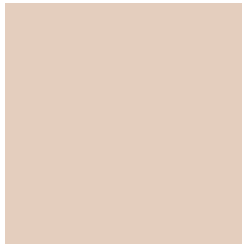
43, 46.967, 275.039



10, 17.331, 265.716

Previews

White Background



This preview shows how the CIELCh color 84, 11.885, 64.589 looks on a white background.

Color Contrast Check

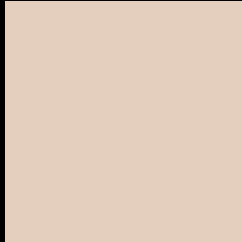
Large Text (above 18pt) WCAG AA × Fail

Any Text WCAG AA × Fail

Large Text (above 18pt) WCAG AAA × Fail

Any Text WCAG AAA × Fail

Black Background



This preview shows how the CIELCh color 84, 11.885, 64.589 looks on a black background.

Color Contrast Check

Large Text (above 18pt) WCAG AA ✓ Pass

Any Text WCAG AA ✓ Pass

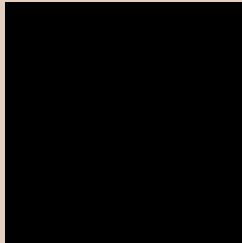
Large Text (above 18pt) WCAG AAA ✓ Pass

Any Text WCAG AAA ✓ Pass

If you want to check with other color combinations, try the [Color Contrast Checker](#).

CIELCh 84, 11.885, 64.589

Background



This preview shows how black text looks on a background with the CIELCh color 84, 11.885, 64.589.

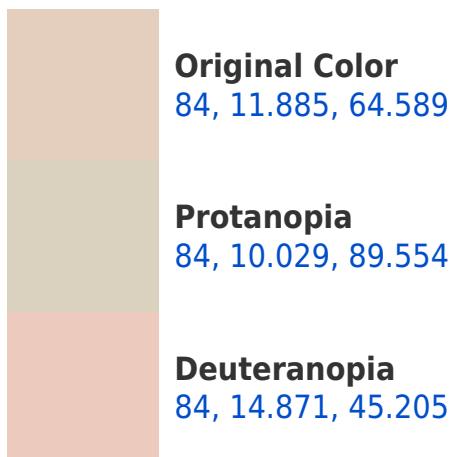


This preview shows how white text looks on a background with the CIELCh color 84, 11.885, 64.589.

Color Blindness Simulation

Color vision deficiency is a very complex topic, and I could not describe the different causes any better than Wikipedia does, so if you want to learn more, you should check out their [article about color blindness](#).

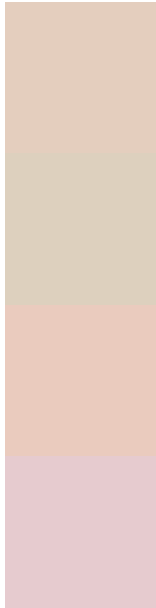
Dichromacy





Tritanopia
84, 13.814, 342.940

Trichromacy



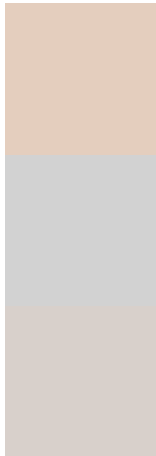
Original Color
84, 11.885, 64.589

Protanomaly
84, 10.652, 81.798

Deuteranomaly
84, 13.726, 49.812

Tritanomaly
84, 10.214, 8.306

Monochromacy



Original Color
84, 11.885, 64.589

Achromatopsia
84, 0.010, 296.813

Achromatomaly
84, 3.932, 61.320

CSS Examples

Text

The CSS property to change the color of the text to CIELCh 84, 11.885, 64.589 is called "color". The color property can be set on classes, ids or directly on the HTML element.

This example shows how text in the color `rgb(228, 206, 190)` looks like.

```
.text, #text, p{  
    color:rgb(228, 206, 190)  
}
```

If you want to add a text shadow in that color use the text-shadow property, you can generate a text shadow directly with our [CSS Text Shadow Generator](#).

Here you see how black text with a 4 pixel rgb(228, 206, 190) colored shadow looks like.

```
.shadow{ text-shadow: 4px 4px 2px rgb(228, 206, 190) }
```

Border

The CSS property to change the border of an element to CIELCh 84, 11.885, 64.589 is called "border". The border property can be set on classes, ids or directly on the HTML element.

This example shows the color as border, it can be applied via the CSS property "border" or "border-color".

```
.border, #border, table{ border:4px solid rgb(228, 206, 190) }
```

If only the border color should be changed use the property `border-color`.

```
.border{ border-color:rgb(228, 206, 190) }
```

If you want to add a box shadow in that color use:

Here you see how a box with a 4 pixel `rgb(228, 206, 190)` colored shadow looks like.

```
.boxshadow{ -moz-box-shadow:4px 4px 4px  
4px rgb(228, 206, 190); -webkit-box-  
shadow:4px 4px 4px 4px rgb(228, 206, 190);  
box-shadow:4px 4px 4px 4px rgb(228, 206,  
190) }
```

Background

The CSS property to change the background color of an element to CIELCh 84, 11.885, 64.589 is called "background". The background property can be set on classes, ids or directly on the HTML element.

```
.background, #background, body{  
background: rgb(228, 206, 190) }
```

If only the background color should be changed can be used:

```
.background{ background-color: rgb(228,  
206, 190) }
```

This example shows the color as background, it is applied via the CSS property "background".

To optimize and compress your CSS code, you can use our [online CSS compressor and optimizer](#) based on csstidy. If you want to create a linear or radial gradient as background or border, check our [CSS Gradient Generator](#).

Hey! You found this booklet interesting? Support Converting Colors with the new Membership Option!

The pro membership hides all ads, plus gives you double the colors in the color bucket, and more awesome pro features!

[Learn more, Memberships starting at \\$2.50/m!](#)

**Follow me
on Twitter!**

@ConvertingColor