

Converting Colors

CIELCh(84, 18.422, 48.192)

Have a look what the booklet for
CIELCh(84, 18.422, 48.192) contains.

CIELCh(84, 18.359, 49.282)	3
<i>Conversions</i>	4
<i>Details</i>	6
<i>Harmonies</i>	11
<i>Previews</i>	20
<i>Color Blindness Simulation</i>	23
<i>CSS Examples</i>	26

Color

CIELCh(84, 18.359, 49.282)

Conversions

Conversions Part 1

Format	Color
Hex	F2C9B8
RGB	242, 201, 184
RGB Percent	95%, 79%, 72%
CMY	0.0512, 0.2120, 0.2787
CMYK	0.00, 0.17, 0.24, 0.05
HSL	18°, 69%, 84%
HSV	18°, 24%, 95%
XYZ	66.1106, 64.0658, 54.1938
YIQ	211.3210, 29.8930, 3.4050

Conversions

Conversions Part 2

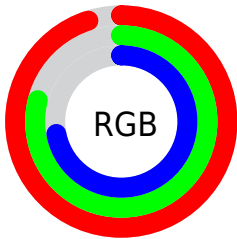
Format	Color
R _Y B	242, 208, 184
Decimal	15911352
CIE Lab	84.00, 11.98, 13.91
CIE LCh	84, 18.359, 49.282
Yxy	64.0658, 0.3586, 0.3475
Android (android.graphics.Color)	4294101432 (0xFFFF2C9B8)
YUV	211.3210, -13.4693, 26.9055
Hunter-Lab	80.0411, 7.3616, 15.8850

Details

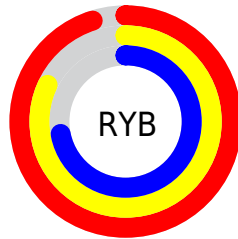
The CIELCh color **84, 18.359, 49.282** is a light color, and the websafe version is hex **FFCCCC**. A complement of this color would be **87, 15.901, 232.868**, and the grayscale version is **85, 0.010, 296.813**.

A 20% lighter version of the original color is **100, 7.593, 109.599**, and **64, 18.300, 49.415** is the 20% darker color. If you saturate the color by 10%, you get **79, 27.068, 48.856**, and if you desaturate by 10%, it is **89, 10.291, 49.802**.

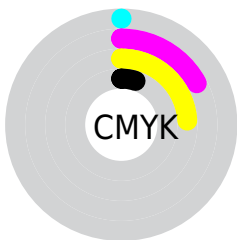
Distribution



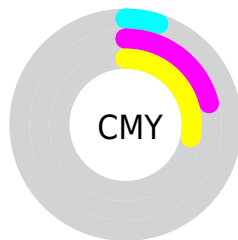
- Red (95%)
- Green (79%)
- Blue (72%)



- Red (95%)
- Yellow (82%)
- Blue (72%)



- Cyan (0%)
- Magenta (17%)
- Yellow (24%)
- Black (5%)



- Cyan (5%)
- Magenta (21%)
- Yellow (28%)

Brightness & Saturation Gradients

These gradients show how the CIELCh color 84, 18.359, 49.282 changes by changing the brightness by 10 percent. The first figure shows a shift by +10% for each color and the second figure -10%.

Similar to the brightness gradients but the following saturation gradients show a change of the CIELCh color 84, 18.359, 49.282 by changing the saturation by 10% instead.

84, 18.359, 49.282

84, 18.359, 49.282

100, 18.359,
49.282

74, 18.359, 49.282

64, 18.359, 49.282

54, 18.359, 49.282

44, 18.359, 49.282

34, 18.359, 49.282

24, 18.359, 49.282

14, 18.359, 49.282

4, 18.359, 49.282

0, 18.359, 49.282

84, 18.359, 49.282

84, 18.359, 49.282

79, 27.068, 48.856

89, 10.291, 49.802

75, 36.452, 48.530

94, 2.814, 50.254

71, 46.499, 48.331

98, 3.802, 221.106

67, 57.116, 48.255

99, 4.506, 199.267

63, 68.035, 48.240

60, 78.622, 48.086

57, 87.549, 47.327

55, 91.761, 46.556

Harmonies

Complementary

The Complementary color scheme is a pair of colors which are on the opposite of each other on the color wheel.



84, 18.359, 49.282



87, 15.901, 232.868

Rectangle

The Rectangle color scheme consists of four colors that form a rectangle on the color wheel.



84, 18.359, 49.282



84, 18.359, 99.282



84, 18.359, 229.282



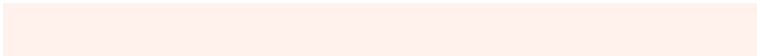
84, 18.359, 279.282

Sweetspot

The Sweet Spot groups the original color and five complimentary colors.



84, 18.358, 49.291



96, 5.239, 50.156



81, 30.224, 335.298



51, 3.412, 50.129



0, 0.000, 0.000



53, 0.007, 296.813

Same Dimension

The Same Dimension uses a secret algorithm to generate beautiful new colors.



84, 18.358, 49.291



86, 23.650, 49.057



91, 23.880, 96.540



48, 4.082, 50.038



42, 74.130, 47.119



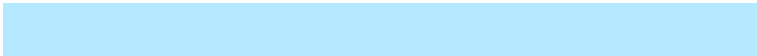
11, 24.914, 41.598

Inverse Universe

The Inverse Universe completely reimagines the original color for something new.



87, 15.901, 232.868



90, 19.781, 233.500



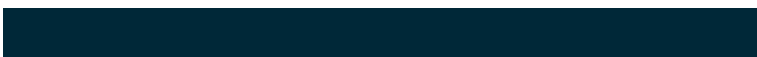
80, 24.453, 282.681



48, 3.876, 231.492



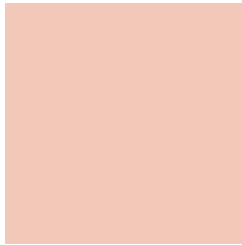
51, 37.850, 254.809



14, 15.646, 246.732

Previews

White Background



This preview shows how the CIELCh color 84, 18.359, 49.282 looks on a white background.

Color Contrast Check

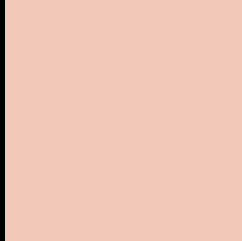
Large Text (above 18pt) WCAG AA × Fail

Any Text WCAG AA × Fail

Large Text (above 18pt) WCAG AAA × Fail

Any Text WCAG AAA × Fail

Black Background



This preview shows how the CIELCh color 84, 18.359, 49.282 looks on a black background.

Color Contrast Check

Large Text (above 18pt) WCAG AA ✓ Pass

Any Text WCAG AA ✓ Pass

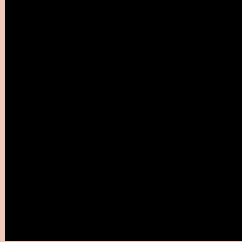
Large Text (above 18pt) WCAG AAA ✓ Pass

Any Text WCAG AAA ✓ Pass

If you want to check with other color combinations, try the [Color Contrast Checker](#).

CIELCh 84, 18.359, 49.282

Background



This preview shows how black text looks on a background with the CIELCh color 84, 18.359, 49.282.

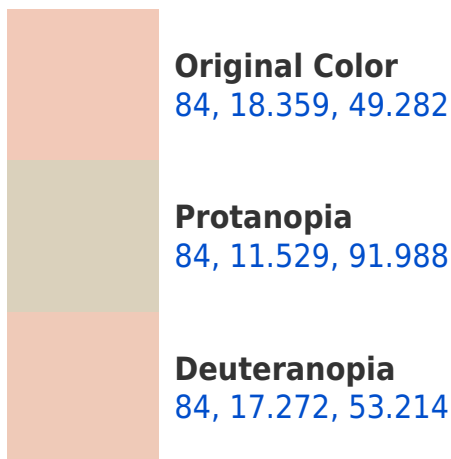


This preview shows how white text looks on a background with the CIELCh color 84, 18.359, 49.282.

Color Blindness Simulation

Color vision deficiency is a very complex topic, and I could not describe the different causes any better than Wikipedia does, so if you want to learn more, you should check out their [article about color blindness](#).

Dichromacy





Tritanopia
84, 19.386, 357.085

Trichromacy



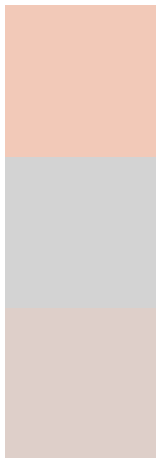
Original Color
84, 18.359, 49.282

Protanomaly
84, 12.834, 70.527

Deuteranomaly
84, 17.608, 52.526

Tritanomaly
84, 17.428, 13.885

Monochromacy



Original Color
84, 18.359, 49.282

Achromatopsia
85, 0.010, 296.813

Achromatomaly
84, 6.395, 49.148

CSS Examples

Text

The CSS property to change the color of the text to CIELCh 84, 18.359, 49.282 is called "color". The color property can be set on classes, ids or directly on the HTML element.

This example shows how text in the color `rgb(242, 201, 184)` looks like.

```
.text, #text, p{  
    color:rgb(242, 201, 184)  
}
```

If you want to add a text shadow in that color use the text-shadow property, you can generate a text shadow directly with our [CSS Text Shadow Generator](#).

Here you see how black text with a 4 pixel rgb(242, 201, 184) colored shadow looks like.

```
.shadow{ text-shadow: 4px 4px 2px rgb(242, 201, 184) }
```

Border

The CSS property to change the border of an element to CIELCh 84, 18.359, 49.282 is called "border". The border property can be set on classes, ids or directly on the HTML element.

This example shows the color as border, it can be applied via the CSS property "border" or "border-color".

```
.border, #border, table{ border:4px solid rgb(242, 201, 184) }
```

If only the border color should be changed use the property border-color.

```
.border{ border-color:rgb(242, 201, 184) }
```

If you want to add a box shadow in that color use:

Here you see how a box with a 4 pixel rgb(242, 201, 184) colored shadow looks like.

```
.boxshadow{ -moz-box-shadow:4px 4px 4px  
4px rgb(242, 201, 184); -webkit-box-  
shadow:4px 4px 4px 4px rgb(242, 201, 184);  
box-shadow:4px 4px 4px 4px rgb(242, 201,  
184) }
```

Background

The CSS property to change the background color of an element to CIELCh 84, 18.359, 49.282 is called "background". The background property can be set on classes, ids or directly on the HTML element.

```
.background, #background, body{  
background: rgb(242, 201, 184) }
```

If only the background color should be changed can be used:

```
.background{ background-color: rgb(242,  
201, 184) }
```

This example shows the color as background, it is applied via the CSS property "background".

To optimize and compress your CSS code, you can use our [online CSS compressor and optimizer](#) based on csstidy. If you want to create a linear or radial gradient as background or border, check our [CSS Gradient Generator](#).

Hey! You found this booklet interesting? Support Converting Colors with the new Membership Option!

The pro membership hides all ads, plus gives you double the colors in the color bucket, and more awesome pro features!

[Learn more, Memberships starting at \\$2.50/m!](#)

**Follow me
on Twitter!**

@ConvertingColor