

Converting Colors

CIELCh(84, 4.903, 32.008)

Have a look what the booklet for
CIELCh(84, 4.903, 32.008) contains.

CIELCh(84, 4.898, 32.008)	3
<i>Conversions</i>	4
<i>Details</i>	6
<i>Harmonies</i>	11
<i>Previews</i>	20
<i>Color Blindness Simulation</i>	23
<i>CSS Examples</i>	26

Color

CIELCh(84, 4.898, 32.008)

Conversions

Conversions Part 1

Format	Color
Hex	DCCFCD
RGB	220, 207, 205
RGB Percent	86%, 81%, 80%
CMY	0.1383, 0.1893, 0.1971
CMYK	0.00, 0.06, 0.07, 0.14
HSL	8°, 18%, 83%
HSV	8°, 7%, 86%
XYZ	62.6699, 64.0658, 66.6528
YIQ	210.6590, 8.3900, 2.1340

Conversions

Conversions Part 2

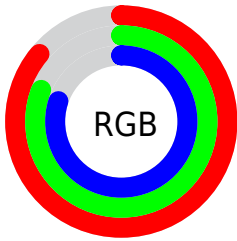
Format	Color
RYB	220, 207, 205
Decimal	14471117
CIELab	84.00, 4.15, 2.60
CIELCh	84, 4.898, 32.008
Yxy	64.0658, 0.3241, 0.3313
Android (android.graphics.Color)	4292661197 (0xFFDCCFCD)
YUV	210.6590, -2.7899, 8.1921
Hunter-Lab	80.0411, -0.3116, 6.6560

Details

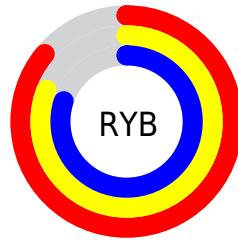
The CIELCh color **84, 4.898, 32.008** is a light color, and the websafe version is hex **CCCCCC**. A complement of this color would be **86, 4.689, 212.182**, and the grayscale version is **84, 0.010, 296.813**.

A 20% lighter version of the original color is **100, 0.012, 296.813**, and **64, 4.818, 33.036** is the 20% darker color. If you saturate the color by 10%, you get **79, 12.586, 32.311**, and if you desaturate by 10%, it is **89, 2.189, 212.342**.

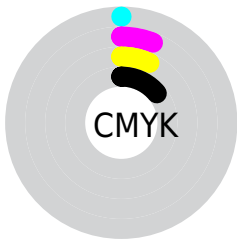
Distribution



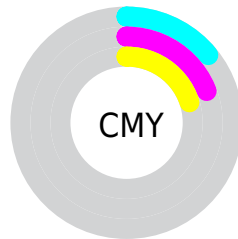
- Red (86%)
- Green (81%)
- Blue (80%)



- Red (86%)
- Yellow (81%)
- Blue (80%)



- Cyan (0%)
- Magenta (6%)
- Yellow (7%)
- Black (14%)



- Cyan (14%)
- Magenta (19%)
- Yellow (20%)

Brightness & Saturation Gradients

These gradients show how the CIELCh color 84, 4.898, 32.008 changes by changing the brightness by 10 percent. The first figure shows a shift by +10% for each color and the second figure -10%.

Similar to the brightness gradients but the following saturation gradients show a change of the CIELCh color 84, 4.898, 32.008 by changing the saturation by 10% instead.



84, 4.898, 32.008

84, 4.898, 32.008

79, 12.586, 32.311

89, 2.189, 212.342

74, 20.926, 32.688

95, 8.730, 212.141

69, 29.943, 33.255

98, 11.889,
198.712

64, 39.624, 34.076

59, 49.893, 35.203

55, 60.573, 36.669

52, 71.308, 38.418

49, 81.338, 40.174

48, 89.079, 41.237

Harmonies

Complementary

The Complementary color scheme is a pair of colors which are on the opposite of each other on the color wheel.



84, 4.898, 32.008



86, 4.689, 212.182

Rectangle

The Rectangle color scheme consists of four colors that form a rectangle on the color wheel.



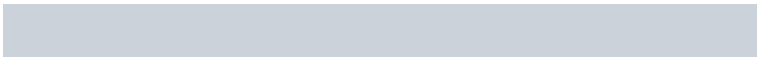
84, 4.898, 32.008



84, 4.898, 82.008



84, 4.898, 212.008



84, 4.898, 262.008

Sweetspot

The Sweet Spot groups the original color and five complimentary colors.



84, 4.897, 32.035



99, 1.587, 31.683



84, 8.775, 328.673



53, 0.902, 31.660



0, 0.000, 0.000



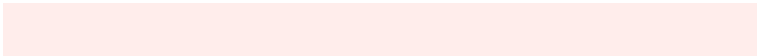
53, 0.007, 296.813

Same Dimension

The Same Dimension uses a secret algorithm to generate beautiful new colors.



84, 4.897, 32.035



95, 6.510, 32.072



86, 5.346, 87.460



43, 4.111, 32.109



37, 76.042, 41.874



6, 21.822, 27.317

Inverse Universe

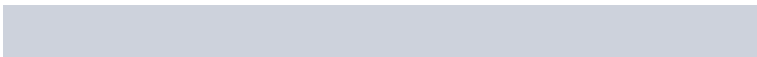
The Inverse Universe completely reimagines the original color for something new.



86, 4.689, 212.182



98, 6.183, 212.163



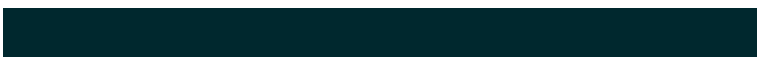
84, 5.340, 269.307



45, 3.868, 212.150



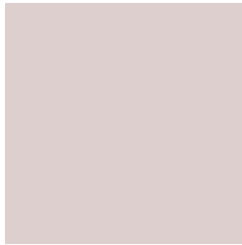
57, 32.798, 221.017



14, 13.330, 216.242

Previews

White Background



This preview shows how the CIELCh color 84, 4.898, 32.008 looks on a white background.

Color Contrast Check

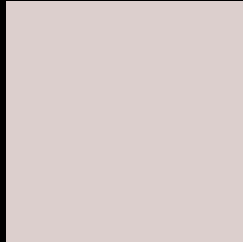
Large Text (above 18pt) WCAG AA × Fail

Any Text WCAG AA × Fail

Large Text (above 18pt) WCAG AAA × Fail

Any Text WCAG AAA × Fail

Black Background



This preview shows how the CIELCh color 84, 4.898, 32.008 looks on a black background.

Color Contrast Check

Large Text (above 18pt) WCAG AA ✓ Pass

Any Text WCAG AA ✓ Pass

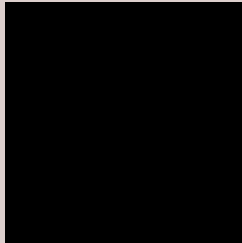
Large Text (above 18pt) WCAG AAA ✓ Pass

Any Text WCAG AAA ✓ Pass

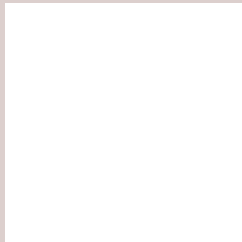
If you want to check with other color combinations, try the [Color Contrast Checker](#).

CIELCh 84, 4.898, 32.008

Background



This preview shows how black text looks on a background with the CIELCh color 84, 4.898, 32.008.

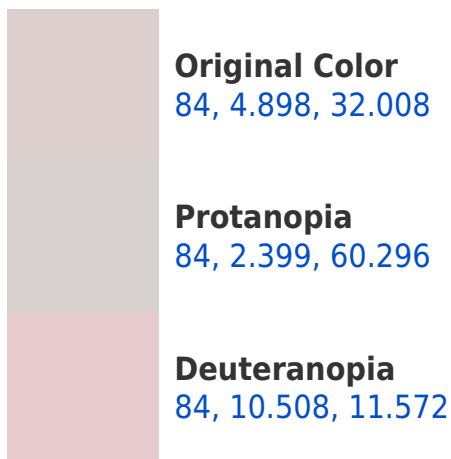


This preview shows how white text looks on a background with the CIELCh color 84, 4.898, 32.008.

Color Blindness Simulation

Color vision deficiency is a very complex topic, and I could not describe the different causes any better than Wikipedia does, so if you want to learn more, you should check out their [article about color blindness](#).

Dichromacy





Tritanopia
84, 10.686, 328.054

Trichromacy



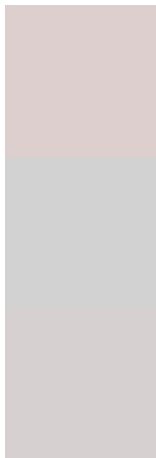
Original Color
84, 4.898, 32.008

Protanomaly
84, 3.105, 39.198

Deuteranomaly
84, 8.577, 12.980

Tritanomaly
84, 7.534, 340.941

Monochromacy



Original Color
84, 4.898, 32.008

Achromatopsia
84, 0.010, 296.813

Achromatomaly
84, 1.890, 35.364

CSS Examples

Text

The CSS property to change the color of the text to CIELCh 84, 4.898, 32.008 is called "color". The color property can be set on classes, ids or directly on the HTML element.

This example shows how text in the color `rgb(220, 207, 205)` looks like.

```
.text, #text, p{  
    color:rgb(220, 207, 205)  
}
```

If you want to add a text shadow in that color use the text-shadow property, you can generate a text shadow directly with our [CSS Text Shadow Generator](#).

Here you see how black text with a 4 pixel rgb(220, 207, 205) colored shadow looks like.

```
.shadow{ text-shadow: 4px 4px 2px rgb(220, 207, 205) }
```

Border

The CSS property to change the border of an element to CIELCh 84, 4.898, 32.008 is called "border". The border property can be set on classes, ids or directly on the HTML element.

This example shows the color as border, it can be applied via the CSS property "border" or "border-color".

```
.border, #border, table{ border:4px solid rgb(220, 207, 205) }
```

If only the border color should be changed use the property `border-color`.

```
.border{ border-color:rgb(220, 207, 205) }
```

If you want to add a box shadow in that color use:

Here you see how a box with a 4 pixel `rgb(220, 207, 205)` colored shadow looks like.

```
.boxshadow{ -moz-box-shadow:4px 4px 4px  
4px rgb(220, 207, 205); -webkit-box-  
shadow:4px 4px 4px 4px rgb(220, 207, 205);  
box-shadow:4px 4px 4px 4px rgb(220, 207,  
205) }
```

Background

The CSS property to change the background color of an element to CIELCh 84, 4.898, 32.008 is called "background". The background property can be set on classes, ids or directly on the HTML element.

```
.background, #background, body{  
background: rgb(220, 207, 205) }
```

If only the background color should be changed can be used:

```
.background{ background-color: rgb(220,  
207, 205) }
```

This example shows the color as background, it is applied via the CSS property "background".

To optimize and compress your CSS code, you can use our [online CSS compressor and optimizer](#) based on csstidy. If you want to create a linear or radial gradient as background or border, check our [CSS Gradient Generator](#).

Hey! You found this booklet interesting? Support Converting Colors with the new Membership Option!

The pro membership hides all ads, plus gives you double the colors in the color bucket, and more awesome pro features!

[Learn more, Memberships starting at \\$2.50/m!](#)

**Follow me
on Twitter!**

@ConvertingColor