

Converting Colors

CIELCh(84, 5.133, 19.687)

Have a look what the booklet for
CIELCh(84, 5.133, 19.687) contains.

CIELCh(84, 5.151, 19.683)	3
<i>Conversions</i>	4
<i>Details</i>	6
<i>Harmonies</i>	11
<i>Previews</i>	20
<i>Color Blindness Simulation</i>	23
<i>CSS Examples</i>	26

Color

CIELCh(84, 5.151, 19.683)

Conversions

Conversions Part 1

Format	Color
Hex	DCCECE
RGB	220, 206, 206
RGB Percent	86%, 81%, 81%
CMY	0.1358, 0.1907, 0.1907
CMYK	0.00, 0.06, 0.06, 0.14
HSL	0°, 17%, 84%
HSV	0°, 6%, 86%
XYZ	62.9713, 64.0658, 67.6720
YIQ	210.1860, 8.3440, 2.9680

Conversions

Conversions Part 2

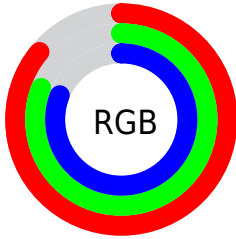
Format	Color
R_{YB}	220, 206, 206
Decimal	14470862
CIE _{Lab}	84.00, 4.85, 1.73
CIE _{LCh}	84, 5.151, 19.683
Yxy	64.0658, 0.3234, 0.3290
Android (android.graphics.Color)	4292660942 (0xFFDCCECE)
YUV	210.1860, -2.0637, 8.6069
Hunter-Lab	80.0411, 0.3607, 5.9011

Details

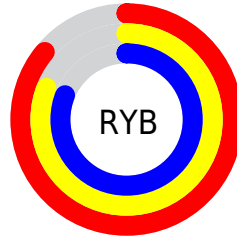
The CIELCh color **84, 5.151, 19.683** is a light color, and the websafe version is hex **CCCCCC**. A complement of this color would be **87, 4.948, 199.199**, and the grayscale version is **84, 0.010, 296.813**.

A 20% lighter version of the original color is **100, 0.012, 296.813**, and **64, 5.074, 19.795** is the 20% darker color. If you saturate the color by 10%, you get **78, 13.787, 20.525**, and if you desaturate by 10%, it is **90, 2.837, 199.448**.

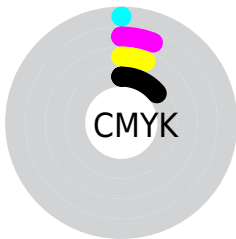
Distribution



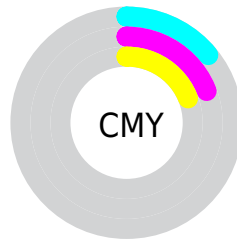
- Red (86%)
- Green (81%)
- Blue (81%)



- Red (86%)
- Yellow (81%)
- Blue (81%)



- Cyan (0%)
- Magenta (6%)
- Yellow (6%)
- Black (14%)



- Cyan (14%)
- Magenta (19%)
- Yellow (19%)

Brightness & Saturation Gradients

These gradients show how the CIELCh color 84, 5.151, 19.683 changes by changing the brightness by 10 percent. The first figure shows a shift by +10% for each color and the second figure -10%.

Similar to the brightness gradients but the following saturation gradients show a change of the CIELCh color 84, 5.151, 19.683 by changing the saturation by 10% instead.



84, 5.151, 19.683

84, 5.151, 19.683

78, 13.787, 20.525

90, 2.837, 199.448

72, 23.096, 21.512

96, 10.221,
198.839

67, 33.050, 22.787

98, 11.683,
198.726

61, 43.546, 24.453

57, 54.381, 26.622

53, 65.246, 29.387

49, 75.708, 32.729

47, 85.046, 36.307

46, 91.707, 39.141

Harmonies

Complementary

The Complementary color scheme is a pair of colors which are on the opposite of each other on the color wheel.



84, 5.151, 19.683



87, 4.948, 199.199

Rectangle

The Rectangle color scheme consists of four colors that form a rectangle on the color wheel.



84, 5.151, 19.683



84, 5.151, 69.683



84, 5.151, 199.683



84, 5.151, 249.683

Sweetspot

The Sweet Spot groups the original color and five complimentary colors.



84, 5.149, 19.705



99, 1.794, 19.181



84, 8.976, 324.759



53, 1.020, 19.156



0, 0.000, 0.000



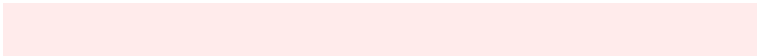
53, 0.007, 296.813

Same Dimension

The Same Dimension uses a secret algorithm to generate beautiful new colors.



84, 5.149, 19.705



94, 7.347, 19.845



86, 4.458, 74.560



43, 4.638, 19.954



36, 78.231, 39.932



5, 23.836, 20.282

Inverse Universe

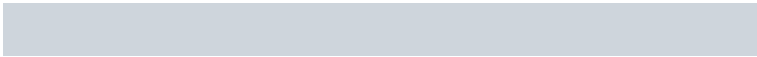
The Inverse Universe completely reimagines the original color for something new.



87, 4.948, 199.199



99, 6.983, 199.082



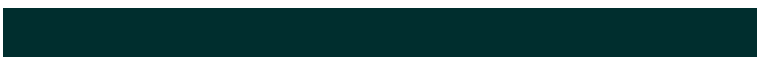
85, 4.402, 256.314



45, 4.370, 198.996



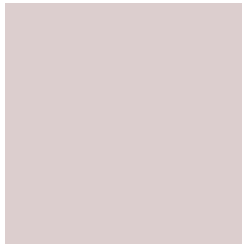
64, 37.517, 196.429



16, 15.069, 196.421

Previews

White Background



This preview shows how the CIELCh color 84, 5.151, 19.683 looks on a white background.

Color Contrast Check

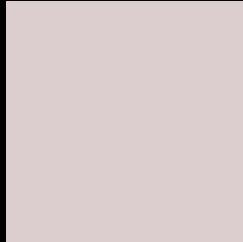
Large Text (above 18pt) WCAG AA × Fail

Any Text WCAG AA × Fail

Large Text (above 18pt) WCAG AAA × Fail

Any Text WCAG AAA × Fail

Black Background



This preview shows how the CIELCh color 84, 5.151, 19.683 looks on a black background.

Color Contrast Check

Large Text (above 18pt) WCAG AA ✓ Pass

Any Text WCAG AA ✓ Pass

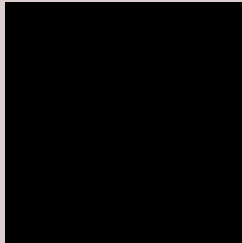
Large Text (above 18pt) WCAG AAA ✓ Pass

Any Text WCAG AAA ✓ Pass

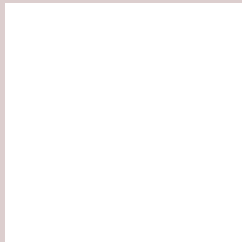
If you want to check with other color combinations, try the [Color Contrast Checker](#).

CIELCh 84, 5.151, 19.683

Background



This preview shows how black text looks on a background with the CIELCh color 84, 5.151, 19.683.



This preview shows how white text looks on a background with the CIELCh color 84, 5.151, 19.683.

Color Blindness Simulation

Color vision deficiency is a very complex topic, and I could not describe the different causes any better than Wikipedia does, so if you want to learn more, you should check out their [article about color blindness](#).

Dichromacy



Original Color

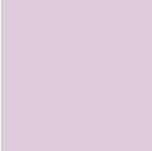
84, 5.151, 19.683

Protanopia

84, 1.890, 35.364

Deuteranopia

84, 10.214, 8.306



Tritanopia
84, 10.686, 328.054

Trichromacy



Original Color
84, 5.151, 19.683

Protanomaly
84, 2.969, 29.617

Deuteranomaly
84, 8.276, 9.017

Tritanomaly
84, 7.873, 337.967

Monochromacy



Original Color
84, 5.151, 19.683

Achromatopsia
85, 0.010, 296.813

Achromatomaly
84, 1.821, 19.227

CSS Examples

Text

The CSS property to change the color of the text to CIELCh 84, 5.151, 19.683 is called "color". The color property can be set on classes, ids or directly on the HTML element.

This example shows how text in the color `rgb(220, 206, 206)` looks like.

```
.text, #text, p{  
    color:rgb(220, 206, 206)  
}
```

If you want to add a text shadow in that color use the text-shadow property, you can generate a text shadow directly with our [CSS Text Shadow Generator](#).

Here you see how black text with a 4 pixel rgb(220, 206, 206) colored shadow looks like.

```
.shadow{ text-shadow: 4px 4px 2px rgb(220, 206, 206) }
```

Border

The CSS property to change the border of an element to CIELCh 84, 5.151, 19.683 is called "border". The border property can be set on classes, ids or directly on the HTML element.

This example shows the color as border, it can be applied via the CSS property "border" or "border-color".

```
.border, #border, table{ border:4px solid rgb(220, 206, 206) }
```

If only the border color should be changed use the property `border-color`.

```
.border{ border-color:rgb(220, 206, 206) }
```

If you want to add a box shadow in that color use:

Here you see how a box with a 4 pixel `rgb(220, 206, 206)` colored shadow looks like.

```
.boxshadow{ -moz-box-shadow:4px 4px 4px  
4px rgb(220, 206, 206); -webkit-box-  
shadow:4px 4px 4px 4px rgb(220, 206, 206);  
box-shadow:4px 4px 4px 4px rgb(220, 206,  
206) }
```

Background

The CSS property to change the background color of an element to CIELCh 84, 5.151, 19.683 is called "background". The background property can be set on classes, ids or directly on the HTML element.

```
.background, #background, body{  
background: rgb(220, 206, 206) }
```

If only the background color should be changed can be used:

```
.background{ background-color: rgb(220,  
206, 206) }
```

This example shows the color as background, it is applied via the CSS property "background".

To optimize and compress your CSS code, you can use our [online CSS compressor and optimizer](#) based on csstidy. If you want to create a linear or radial gradient as background or border, check our [CSS Gradient Generator](#).

Hey! You found this booklet interesting? Support Converting Colors with the new Membership Option!

The pro membership hides all ads, plus gives you double the colors in the color bucket, and more awesome pro features!

[Learn more, Memberships starting at \\$2.50/m!](#)

**Follow me
on Twitter!**

@ConvertingColor