

Converting Colors

CIELCh(84, 5.701, 3.610)

Have a look what the booklet for
CIELCh(84, 5.701, 3.610) contains.

CIELCh(84, 5.729, 3.780)	3
<i>Conversions</i>	4
<i>Details</i>	6
<i>Harmonies</i>	11
<i>Previews</i>	20
<i>Color Blindness Simulation</i>	23
<i>CSS Examples</i>	26

Color

CIELCh(84, 5.729, 3.780)

Conversions

Conversions Part 1

Format	Color
Hex	DDCED1
RGB	221, 206, 209
RGB Percent	87%, 81%, 82%
CMY	0.1336, 0.1924, 0.1807
CMYK	0.00, 0.07, 0.05, 0.13
HSL	348°, 18%, 84%
HSV	348°, 7%, 87%
XYZ	63.3476, 64.0658, 69.2993
YIQ	210.8270, 7.9770, 4.1130

Conversions

Conversions Part 2

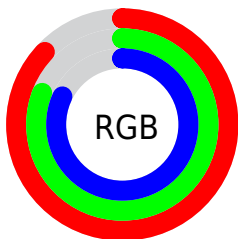
Format	Color
R _Y B	221, 206, 209
Decimal	14536401
CIE Lab	84.00, 5.72, 0.38
CIE LCh	84, 5.729, 3.780
Yxy	64.0658, 0.3220, 0.3257
Android (android.graphics.Color)	4292726481 (0xFFDDCED1)
YUV	210.8270, -0.9007, 8.9217
Hunter-Lab	80.0411, 1.1999, 4.6957

Details

The CIELCh color **84, 5.729, 3.780** is a light color, and the websafe version is hex **CCCCCC**. A complement of this color would be **87, 5.573, 182.762**, and the grayscale version is **84, 0.010, 296.813**.

A 20% lighter version of the original color is **100, 0.012, 296.813**, and **64, 5.692, 2.866** is the 20% darker color. If you saturate the color by 10%, you get **78, 14.538, 4.901**, and if you desaturate by 10%, it is **90, 2.630, 183.204**.

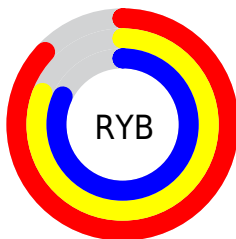
Distribution



Red (87%)

Green (81%)

Blue (82%)



Red (87%)

Yellow (81%)

Blue (82%)

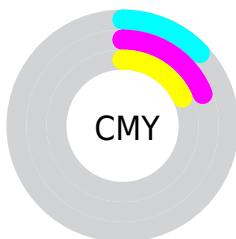


Cyan (0%)

Magenta (7%)

Yellow (5%)

Black (13%)



Cyan (13%)

Magenta (19%)

Yellow (18%)

Brightness & Saturation Gradients

These gradients show how the CIELCh color 84, 5.729, 3.780 changes by changing the brightness by 10 percent. The first figure shows a shift by +10% for each color and the second figure -10%.

Similar to the brightness gradients but the following saturation gradients show a change of the CIELCh color 84, 5.729, 3.780 by changing the saturation by 10% instead.

84, 5.729, 3.780

84, 5.729, 3.780

100, 5.729, 3.780

74, 5.729, 3.780

64, 5.729, 3.780

54, 5.729, 3.780

44, 5.729, 3.780

34, 5.729, 3.780

24, 5.729, 3.780

14, 5.729, 3.780

4, 5.729, 3.780

0, 5.729, 3.780

84, 5.729, 3.780

84, 5.729, 3.780

78, 14.538, 4.901

90, 2.630, 183.204

72, 23.760, 6.163

96, 10.531,
182.270

67, 33.288, 7.683

98, 11.503,
198.738

62, 42.929, 9.556

57, 52.394, 11.908

53, 61.314, 14.888

50, 69.328, 18.646

48, 76.233, 23.252

47, 82.088, 28.522

Harmonies

Complementary

The Complementary color scheme is a pair of colors which are on the opposite of each other on the color wheel.



84, 5.729, 3.780



87, 5.573, 182.762

Rectangle

The Rectangle color scheme consists of four colors that form a rectangle on the color wheel.



84, 5.729, 3.780



84, 5.729, 53.780



84, 5.729, 183.780



84, 5.729, 233.780

Sweetspot

The Sweet Spot groups the original color and five complimentary colors.



84, 5.727, 3.795



99, 1.874, 3.120



84, 9.047, 319.086



53, 1.065, 3.094



0, 0.000, 0.000



53, 0.007, 296.813

Same Dimension

The Same Dimension uses a secret algorithm to generate beautiful new colors.



84, 5.727, 3.795



95, 7.608, 3.935



85, 4.512, 50.993



43, 4.794, 4.083



36, 69.439, 29.190



5, 23.743, 11.632

Inverse Universe

The Inverse Universe completely reimagines the original color for something new.



84, 5.727, 3.795



95, 7.608, 3.935



86, 4.357, 232.175



43, 4.794, 4.083



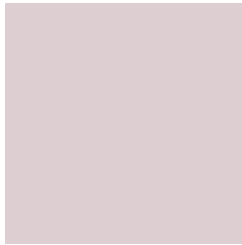
36, 69.439, 29.190



5, 23.743, 11.632

Previews

White Background



This preview shows how the CIELCh color 84, 5.729, 3.780 looks on a white background.

Color Contrast Check

Large Text (above 18pt) WCAG AA × Fail

Any Text WCAG AA × Fail

Large Text (above 18pt) WCAG AAA × Fail

Any Text WCAG AAA × Fail

Black Background



This preview shows how the CIELCh color 84, 5.729, 3.780 looks on a black background.

Color Contrast Check

Large Text (above 18pt) WCAG AA ✓ Pass

Any Text WCAG AA ✓ Pass

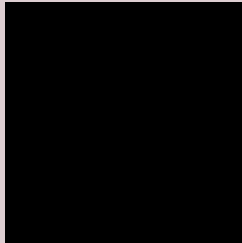
Large Text (above 18pt) WCAG AAA ✓ Pass

Any Text WCAG AAA ✓ Pass

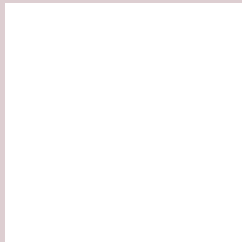
If you want to check with other color combinations, try the [Color Contrast Checker](#).

CIELCh 84, 5.729, 3.780

Background



This preview shows how black text looks on a background with the CIELCh color 84, 5.729, 3.780.

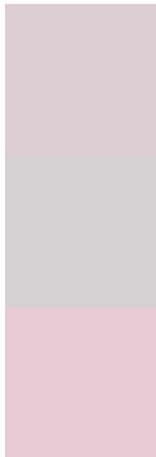


This preview shows how white text looks on a background with the CIELCh color 84, 5.729, 3.780.

Color Blindness Simulation

Color vision deficiency is a very complex topic, and I could not describe the different causes any better than Wikipedia does, so if you want to learn more, you should check out their [article about color blindness](#).

Dichromacy



Original Color

84, 5.729, 3.780

Protanopia

84, 2.115, 349.402

Deuteranopia

84, 10.608, 359.939



Tritanopia
84, 10.909, 329.583

Trichromacy



Original Color

84, 5.729, 3.780

Protanomaly

84, 3.656, 353.938

Deuteranomaly

84, 9.032, 359.645

Tritanomaly

84, 8.494, 337.013

Monochromacy



Original Color

84, 5.729, 3.780

Achromatopsia

85, 0.010, 296.813

Achromatomaly

84, 2.253, 5.827

CSS Examples

Text

The CSS property to change the color of the text to CIELCh 84, 5.729, 3.780 is called "color". The color property can be set on classes, ids or directly on the HTML element.

This example shows how text in the color `rgb(221, 206, 209)` looks like.

```
.text, #text, p{  
    color:rgb(221, 206, 209)  
}
```

If you want to add a text shadow in that color use the text-shadow property, you can generate a text shadow directly with our [CSS Text Shadow Generator](#).

Here you see how black text with a 4 pixel rgb(221, 206, 209) colored shadow looks like.

```
.shadow{ text-shadow: 4px 4px 2px rgb(221, 206, 209) }
```

Border

The CSS property to change the border of an element to CIELCh 84, 5.729, 3.780 is called "border". The border property can be set on classes, ids or directly on the HTML element.

This example shows the color as border, it can be applied via the CSS property "border" or "border-color".

```
.border, #border, table{ border:4px solid rgb(221, 206, 209) }
```

If only the border color should be changed use the property `border-color`.

```
.border{ border-color:rgb(221, 206, 209) }
```

If you want to add a box shadow in that color use:

Here you see how a box with a 4 pixel `rgb(221, 206, 209)` colored shadow looks like.

```
.boxshadow{ -moz-box-shadow:4px 4px 4px  
4px rgb(221, 206, 209); -webkit-box-  
shadow:4px 4px 4px 4px rgb(221, 206, 209);  
box-shadow:4px 4px 4px 4px rgb(221, 206,  
209) }
```

Background

The CSS property to change the background color of an element to CIELCh 84, 5.729, 3.780 is called "background". The background property can be set on classes, ids or directly on the HTML element.

```
.background, #background, body{  
background: rgb(221, 206, 209) }
```

If only the background color should be changed can be used:

```
.background{ background-color: rgb(221,  
206, 209) }
```

This example shows the color as background, it is applied via the CSS property "background".

To optimize and compress your CSS code, you can use our [online CSS compressor and optimizer](#) based on csstidy. If you want to create a linear or radial gradient as background or border, check our [CSS Gradient Generator](#).

Hey! You found this booklet interesting? Support Converting Colors with the new Membership Option!

The pro membership hides all ads, plus gives you double the colors in the color bucket, and more awesome pro features!

[Learn more, Memberships starting at \\$2.50/m!](#)

**Follow me
on Twitter!**

@ConvertingColor