

Converting Colors

CIELCh(84, 6.055, 358.962)

Have a look what the booklet for
CIELCh(84, 6.055, 358.962) contains.

CIELCh(84, 5.891, 358.861)	3
<i>Conversions</i>	4
<i>Details</i>	6
<i>Harmonies</i>	11
<i>Previews</i>	20
<i>Color Blindness Simulation</i>	23
<i>CSS Examples</i>	26

Color

CIELCh(84, 5.891, 358.861)

Conversions

Conversions Part 1

Format	Color
Hex	DDCED2
RGB	221, 206, 210
RGB Percent	87%, 81%, 82%
CMY	0.1339, 0.1927, 0.1770
CMYK	0.00, 0.07, 0.05, 0.13
HSL	344°, 18%, 84%
HSV	344°, 7%, 87%
XYZ	63.4230, 64.0658, 69.8990
YIQ	210.9410, 7.6560, 4.4240

Conversions

Conversions Part 2

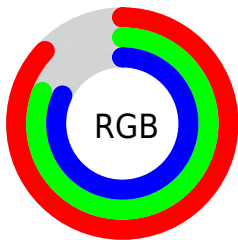
Format	Color
R _Y B	221, 206, 210
Decimal	14536402
CIE Lab	84.00, 5.89, -0.12
CIE LCh	84, 5.891, 358.861
Yxy	64.0658, 0.3213, 0.3246
Android (android.graphics.Color)	4292726482 (0xFFDDCED2)
YUV	210.9410, -0.4639, 8.8217
Hunter-Lab	80.0411, 1.3681, 4.2515

Details

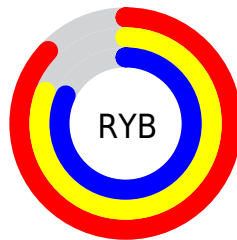
The CIELCh color `84, 5.891, 358.861` is a light color, and the websafe version is hex `CCCCCC`. A complement of this color would be `87, 5.758, 177.796`, and the grayscale version is `84, 0.010, 296.813`.

A 20% lighter version of the original color is `100, 0.012, 296.813`, and `64, 5.872, 357.671` is the 20% darker color. If you saturate the color by 10%, you get `78, 14.886, 359.985`, and if you desaturate by 10%, it is `90, 2.712, 178.241`.

Distribution



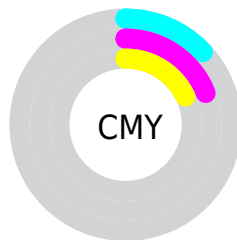
- Red (87%)
- Green (81%)
- Blue (82%)



- Red (87%)
- Yellow (81%)
- Blue (82%)



- Cyan (0%)
- Magenta (7%)
- Yellow (5%)
- Black (13%)



- Cyan (13%)
- Magenta (19%)
- Yellow (18%)

Brightness & Saturation Gradients

These gradients show how the CIELCh color 84, 5.891, 358.861 changes by changing the brightness by 10 percent. The first figure shows a shift by +10% for each color and the second figure -10%.

Similar to the brightness gradients but the following saturation gradients show a change of the CIELCh color 84, 5.891, 358.861 by changing the saturation by 10% instead.

■ 84, 5.891, 358.861

■ 84, 5.891, 358.861

■ 100, 5.891,
358.861

■ 74, 5.891, 358.861

■ 64, 5.891, 358.861

■ 54, 5.891, 358.861

■ 44, 5.891, 358.861

■ 34, 5.891, 358.861

■ 24, 5.891, 358.861

■ 14, 5.891, 358.861

■ 4, 5.891, 358.861

■ 0, 5.891, 358.861

84, 5.891, 358.861

84, 5.891, 358.861

78, 14.886,
359.985

90, 2.712, 178.241

72, 24.217, 1.238

96, 10.899,
177.288

67, 33.754, 2.726

98, 11.527,
198.736

62, 43.277, 4.537

57, 52.463, 6.788

53, 60.907, 9.631

50, 68.217, 13.233

48, 74.177, 17.728

47, 78.936, 23.071

Harmonies

Complementary

The Complementary color scheme is a pair of colors which are on the opposite of each other on the color wheel.



84, 5.891, 358.861



87, 5.758, 177.796

Rectangle

The Rectangle color scheme consists of four colors that form a rectangle on the color wheel.



84, 5.891, 358.861



84, 5.891, 48.861



84, 5.891, 178.861



84, 5.891, 228.861

Sweetspot

The Sweet Spot groups the original color and five complimentary colors.



84, 5.889, 358.874



99, 1.931, 358.206



84, 8.880, 317.042



53, 1.098, 358.181



0, 0.000, 0.000



53, 0.007, 296.813

Same Dimension

The Same Dimension uses a secret algorithm to generate beautiful new colors.



84, 5.889, 358.874



95, 7.820, 359.015



85, 4.601, 43.044



43, 4.925, 359.163



36, 66.697, 23.780



5, 23.826, 8.630

Inverse Universe

The Inverse Universe completely reimagines the original color for something new.



84, 5.889, 358.874



95, 7.820, 359.015



86, 4.422, 223.826



43, 4.925, 359.163



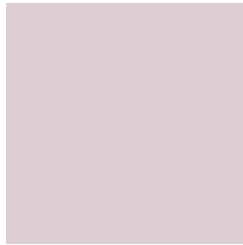
36, 66.697, 23.780



5, 23.826, 8.630

Previews

White Background



This preview shows how the CIELCh color 84, 5.891, 358.861 looks on a white background.

Color Contrast Check

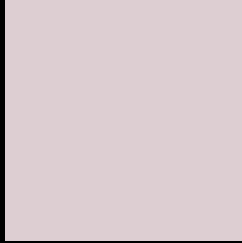
Large Text (above 18pt) WCAG AA × Fail

Any Text WCAG AA × Fail

Large Text (above 18pt) WCAG AAA × Fail

Any Text WCAG AAA × Fail

Black Background



This preview shows how the CIELCh color 84, 5.891, 358.861 looks on a black background.

Color Contrast Check

Large Text (above 18pt) WCAG AA ✓ Pass

Any Text WCAG AA ✓ Pass

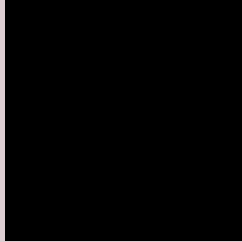
Large Text (above 18pt) WCAG AAA ✓ Pass

Any Text WCAG AAA ✓ Pass

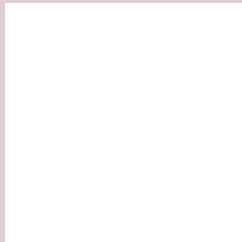
If you want to check with other color combinations, try the [Color Contrast Checker](#).

CIELCh 84, 5.891, 358.861

Background



This preview shows how black text looks on a background with the CIELCh color 84, 5.891, 358.861.



This preview shows how white text looks on a background with the CIELCh color 84, 5.891, 358.861.

Color Blindness Simulation

Color vision deficiency is a very complex topic, and I could not describe the different causes any better than Wikipedia does, so if you want to learn more, you should check out their [article about color blindness](#).

Dichromacy





Tritanopia
84, 10.686, 328.054

Trichromacy



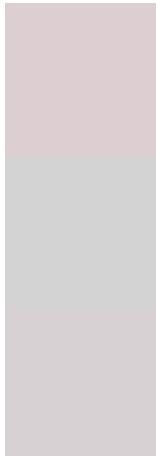
Original Color
84, 5.891, 358.861

Protanomaly
84, 3.914, 346.999

Deuteranomaly
84, 8.685, 358.752

Tritanomaly
84, 8.494, 337.013

Monochromacy



Original Color
84, 5.891, 358.861

Achromatopsia
85, 0.010, 296.813

Achromatomaly
84, 2.434, 353.744

CSS Examples

Text

The CSS property to change the color of the text to CIELCh 84, 5.891, 358.861 is called "color". The color property can be set on classes, ids or directly on the HTML element.

This example shows how text in the color `rgb(221, 206, 210)` looks like.

```
.text, #text, p{  
    color:rgb(221, 206, 210)  
}
```

If you want to add a text shadow in that color use the text-shadow property, you can generate a text shadow directly with our [CSS Text Shadow Generator](#).

Here you see how black text with a 4 pixel rgb(221, 206, 210) colored shadow looks like.

```
.shadow{ text-shadow: 4px 4px 2px rgb(221, 206, 210) }
```

Border

The CSS property to change the border of an element to CIELCh 84, 5.891, 358.861 is called "border". The border property can be set on classes, ids or directly on the HTML element.

This example shows the color as border, it can be applied via the CSS property "border" or "border-color".

```
.border, #border, table{ border:4px solid rgb(221, 206, 210) }
```

If only the border color should be changed use the property `border-color`.

```
.border{ border-color:rgb(221, 206, 210) }
```

If you want to add a box shadow in that color use:

Here you see how a box with a 4 pixel `rgb(221, 206, 210)` colored shadow looks like.

```
.boxshadow{ -moz-box-shadow:4px 4px 4px  
4px rgb(221, 206, 210); -webkit-box-  
shadow:4px 4px 4px 4px rgb(221, 206, 210);  
box-shadow:4px 4px 4px 4px rgb(221, 206,  
210) }
```

Background

The CSS property to change the background color of an element to CIELCh 84, 5.891, 358.861 is called "background". The background property can be set on classes, ids or directly on the HTML element.

```
.background, #background, body{  
background: rgb(221, 206, 210) }
```

If only the background color should be changed can be used:

```
.background{ background-color: rgb(221,  
206, 210) }
```

This example shows the color as background, it is applied via the CSS property "background".

To optimize and compress your CSS code, you can use our [online CSS compressor and optimizer](#) based on csstidy. If you want to create a linear or radial gradient as background or border, check our [CSS Gradient Generator](#).

Hey! You found this booklet interesting? Support Converting Colors with the new Membership Option!

The pro membership hides all ads, plus gives you double the colors in the color bucket, and more awesome pro features!

[Learn more, Memberships starting at \\$2.50/m!](#)

**Follow me
on Twitter!**

@ConvertingColor