

Converting Colors

CIELCh(84, 6.278, 50.866)

Have a look what the booklet for
CIELCh(84, 6.278, 50.866) contains.

CIELCh(84, 6.365, 54.867)	3
<i>Conversions</i>	4
<i>Details</i>	6
<i>Harmonies</i>	11
<i>Previews</i>	20
<i>Color Blindness Simulation</i>	23
<i>CSS Examples</i>	26

Color

CIELCh(84, 6.365, 54.867)

Conversions

Conversions Part 1

Format	Color
Hex	DDCFC8
RGB	221, 207, 200
RGB Percent	87%, 81%, 78%
CMY	0.1339, 0.1888, 0.2163
CMYK	0.00, 0.06, 0.10, 0.13
HSL	20°, 24%, 82%
HSV	20°, 10%, 87%
XYZ	62.4582, 64.0658, 63.6274
YIQ	210.3880, 10.5910, 0.7910

Conversions

Conversions Part 2

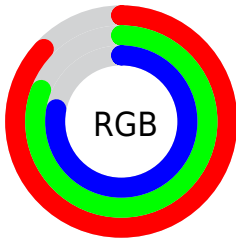
Format	Color
R _Y B	221, 211, 200
Decimal	14536648
CIE Lab	84.00, 3.66, 5.21
CIE LCh	84, 6.365, 54.867
Yxy	64.0658, 0.3285, 0.3369
Android (android.graphics.Color)	4292726728 (0xFFDDCFC8)
YUV	210.3880, -5.1213, 9.3067
Hunter-Lab	80.0411, -0.7836, 8.8971

Details

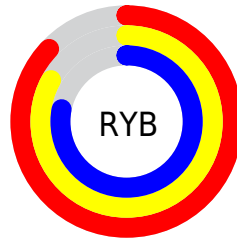
The CIELCh color **84, 6.365, 54.867** is a light color, and the websafe version is hex **CCCCCC**. A complement of this color would be **85, 6.072, 236.654**, and the grayscale version is **84, 0.010, 296.813**.

A 20% lighter version of the original color is **100, 0.012, 296.813**, and **64, 6.448, 56.699** is the 20% darker color. If you saturate the color by 10%, you get **80, 13.542, 54.182**, and if you desaturate by 10%, it is **88, 0.324, 237.383**.

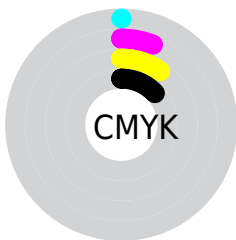
Distribution



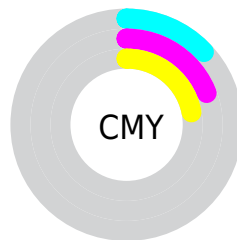
- Red (87%)
- Green (81%)
- Blue (78%)



- Red (87%)
- Yellow (83%)
- Blue (78%)



- Cyan (0%)
- Magenta (6%)
- Yellow (10%)
- Black (13%)



- Cyan (13%)
- Magenta (19%)
- Yellow (22%)

Brightness & Saturation Gradients

These gradients show how the CIELCh color 84, 6.365, 54.867 changes by changing the brightness by 10 percent. The first figure shows a shift by +10% for each color and the second figure -10%.

Similar to the brightness gradients but the following saturation gradients show a change of the CIELCh color 84, 6.365, 54.867 by changing the saturation by 10% instead.



84, 6.365, 54.867

84, 6.365, 54.867

80, 13.542, 54.182

88, 0.324, 237.383

76, 21.256, 53.502

93, 6.576, 236.658

72, 29.545, 52.890

97, 10.332,
210.265

68, 38.420, 52.367

98, 11.527,
198.736

64, 47.836, 51.933

61, 57.636, 51.552

57, 67.428, 51.104

55, 76.350, 50.285

52, 83.308, 48.780

Harmonies

Complementary

The Complementary color scheme is a pair of colors which are on the opposite of each other on the color wheel.



84, 6.365, 54.867



85, 6.072, 236.654

Rectangle

The Rectangle color scheme consists of four colors that form a rectangle on the color wheel.



84, 6.365, 54.867



84, 6.365, 104.867



84, 6.365, 234.867



84, 6.365, 284.867

Sweetspot

The Sweet Spot groups the original color and five complimentary colors.



84, 6.365, 54.890



99, 2.203, 55.217



83, 10.666, 336.303



52, 1.675, 55.209



0, 0.000, 0.000



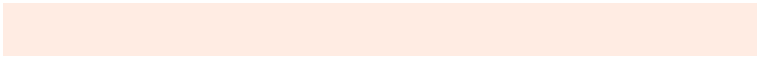
53, 0.007, 296.813

Same Dimension

The Same Dimension uses a secret algorithm to generate beautiful new colors.



84, 6.365, 54.890



95, 8.322, 54.780



87, 9.208, 101.270



44, 3.778, 54.895



41, 69.412, 49.305



8, 19.304, 41.814

Inverse Universe

The Inverse Universe completely reimagines the original color for something new.



85, 6.072, 236.654



96, 7.871, 236.802



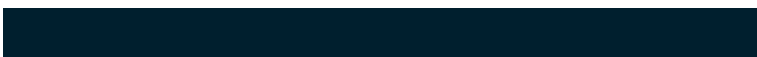
82, 9.336, 283.460



44, 3.606, 236.647



46, 38.711, 261.842



10, 14.192, 251.282

Previews

White Background



This preview shows how the CIELCh color 84, 6.365, 54.867 looks on a white background.

Color Contrast Check

Large Text (above 18pt) WCAG AA × Fail

Any Text WCAG AA × Fail

Large Text (above 18pt) WCAG AAA × Fail

Any Text WCAG AAA × Fail

Black Background



This preview shows how the CIE LCh color 84, 6.365, 54.867 looks on a black background.

Color Contrast Check

Large Text (above 18pt) WCAG AA ✓ Pass

Any Text WCAG AA ✓ Pass

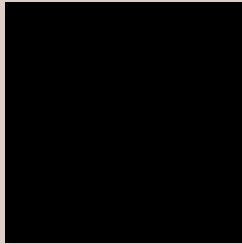
Large Text (above 18pt) WCAG AAA ✓ Pass

Any Text WCAG AAA ✓ Pass

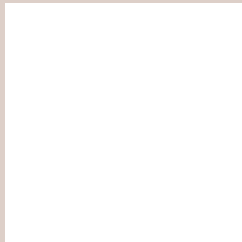
If you want to check with other color combinations, try the [Color Contrast Checker](#).

CIELCh 84, 6.365, 54.867

Background



This preview shows how black text looks on a background with the CIELCh color 84, 6.365, 54.867.

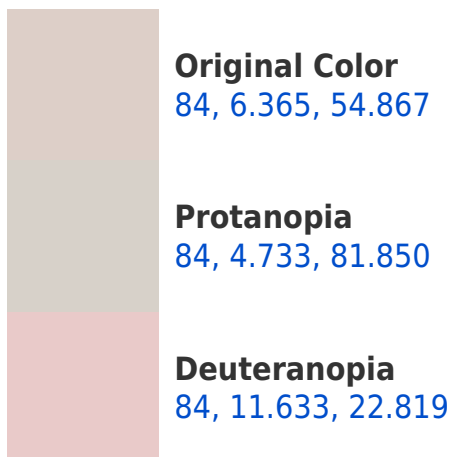


This preview shows how white text looks on a background with the CIELCh color 84, 6.365, 54.867.

Color Blindness Simulation

Color vision deficiency is a very complex topic, and I could not describe the different causes any better than Wikipedia does, so if you want to learn more, you should check out their [article about color blindness](#).

Dichromacy





Tritanopia
84, 11.139, 331.054

Trichromacy



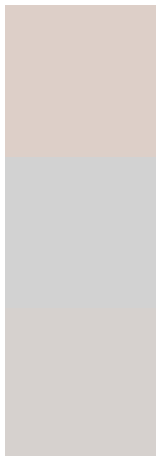
Original Color
84, 6.365, 54.867

Protanomaly
84, 4.945, 67.454

Deuteranomaly
84, 9.478, 29.573

Tritanomaly
84, 7.822, 347.405

Monochromacy



Original Color
84, 6.365, 54.867

Achromatopsia
84, 0.010, 296.813

Achromatomaly
84, 2.399, 60.296

CSS Examples

Text

The CSS property to change the color of the text to CIELCh 84, 6.365, 54.867 is called "color". The color property can be set on classes, ids or directly on the HTML element.

This example shows how text in the color `rgb(221, 207, 200)` looks like.

```
.text, #text, p{  
    color:rgb(221, 207, 200)  
}
```

If you want to add a text shadow in that color use the text-shadow property, you can generate a text shadow directly with our [CSS Text Shadow Generator](#).

Here you see how black text with a 4 pixel rgb(221, 207, 200) colored shadow looks like.

```
.shadow{ text-shadow: 4px 4px 2px rgb(221, 207, 200) }
```

Border

The CSS property to change the border of an element to CIELCh 84, 6.365, 54.867 is called "border". The border property can be set on classes, ids or directly on the HTML element.

This example shows the color as border, it can be applied via the CSS property "border" or "border-color".

```
.border, #border, table{ border:4px solid rgb(221, 207, 200) }
```

If only the border color should be changed use the property `border-color`.

```
.border{ border-color:rgb(221, 207, 200) }
```

If you want to add a box shadow in that color use:

Here you see how a box with a 4 pixel `rgb(221, 207, 200)` colored shadow looks like.

```
.boxshadow{ -moz-box-shadow:4px 4px 4px  
4px rgb(221, 207, 200); -webkit-box-  
shadow:4px 4px 4px 4px rgb(221, 207, 200);  
box-shadow:4px 4px 4px 4px rgb(221, 207,  
200) }
```

Background

The CSS property to change the background color of an element to CIELCh 84, 6.365, 54.867 is called "background". The background property can be set on classes, ids or directly on the HTML element.

```
.background, #background, body{  
background: rgb(221, 207, 200) }
```

If only the background color should be changed can be used:

```
.background{ background-color: rgb(221,  
207, 200) }
```

This example shows the color as background, it is applied via the CSS property "background".

To optimize and compress your CSS code, you can use our [online CSS compressor and optimizer](#) based on csstidy. If you want to create a linear or radial gradient as background or border, check our [CSS Gradient Generator](#).

Hey! You found this booklet interesting? Support Converting Colors with the new Membership Option!

The pro membership hides all ads, plus gives you double the colors in the color bucket, and more awesome pro features!

[Learn more, Memberships starting at \\$2.50/m!](#)

**Follow me
on Twitter!**

@ConvertingColor