

Converting Colors

CIELCh(84, 6.944, 2.252)

Have a look what the booklet for
CIELCh(84, 6.944, 2.252) contains.

CIELCh(84, 6.944, 2.252)	3
<i>Conversions</i>	4
<i>Details</i>	6
<i>Harmonies</i>	11
<i>Previews</i>	20
<i>Color Blindness Simulation</i>	23
<i>CSS Examples</i>	26

Color

CIELCh(84, 6.944, 2.252)

Conversions

Conversions Part 1

Format	Color
Hex	DFCDD1
RGB	223, 205, 209
RGB Percent	87%, 80%, 82%
CMY	0.1248, 0.1954, 0.1798
CMYK	0.00, 0.08, 0.06, 0.12
HSL	347°, 22%, 84%
HSV	347°, 8%, 88%
XYZ	63.8809, 64.0658, 69.4261
YIQ	210.8380, 9.4440, 5.0600

Conversions

Conversions Part 2

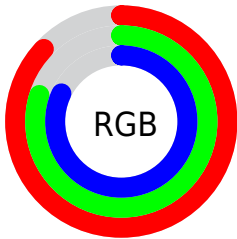
Format	Color
R _Y B	223, 205, 209
Decimal	14667217
CIE Lab	84.00, 6.94, 0.27
CIE LCh	84, 6.944, 2.252
Yxy	64.0658, 0.3237, 0.3246
Android (android.graphics.Color)	4292857297 (0xFFDFCDD1)
YUV	210.8380, -0.9061, 10.6661
Hunter-Lab	80.0411, 2.3891, 4.6018

Details

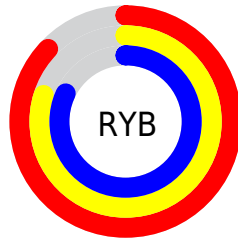
The CIELCh color **84, 6.944, 2.252** is a light color, and the websafe version is hex **CCCCCC**. A complement of this color would be **87, 6.736, 180.937**, and the grayscale version is **85, 0.010, 296.813**.

A 20% lighter version of the original color is **100, 0.012, 296.813**, and **64, 6.982, 1.486** is the 20% darker color. If you saturate the color by 10%, you get **78, 15.935, 3.386**, and if you desaturate by 10%, it is **90, 1.617, 181.757**.

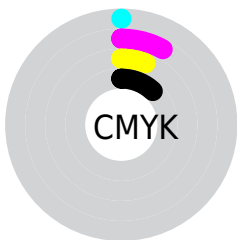
Distribution



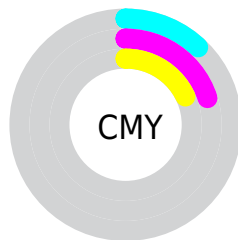
- Red (87%)
- Green (80%)
- Blue (82%)



- Red (87%)
- Yellow (80%)
- Blue (82%)



- Cyan (0%)
- Magenta (8%)
- Yellow (6%)
- Black (12%)



- Cyan (12%)
- Magenta (20%)
- Yellow (18%)

Brightness & Saturation Gradients

These gradients show how the CIELCh color 84, 6.944, 2.252 changes by changing the brightness by 10 percent. The first figure shows a shift by +10% for each color and the second figure -10%.

Similar to the brightness gradients but the following saturation gradients show a change of the CIELCh color 84, 6.944, 2.252 by changing the saturation by 10% instead.

84, 6.944, 2.252

84, 6.944, 2.252

100, 6.944, 2.252

74, 6.944, 2.252

64, 6.944, 2.252

54, 6.944, 2.252

44, 6.944, 2.252

34, 6.944, 2.252

24, 6.944, 2.252

14, 6.944, 2.252

4, 6.944, 2.252

0, 6.944, 2.252

84, 6.944, 2.252

84, 6.944, 2.252

78, 15.935, 3.386

90, 1.617, 181.757

72, 25.305, 4.678

96, 9.729, 180.670

67, 34.928, 6.232

98, 10.773,
198.787

62, 44.588, 8.145

57, 53.968, 10.544

53, 62.678, 13.583

50, 70.357, 17.419

48, 76.834, 22.124

47, 82.292, 27.496

Harmonies

Complementary

The Complementary color scheme is a pair of colors which are on the opposite of each other on the color wheel.



84, 6.944, 2.252



87, 6.736, 180.937

Rectangle

The Rectangle color scheme consists of four colors that form a rectangle on the color wheel.



84, 6.944, 2.252



84, 6.944, 52.252



84, 6.944, 182.252



84, 6.944, 232.252

Sweetspot

The Sweet Spot groups the original color and five complimentary colors.



84, 6.942, 2.264



99, 1.892, 1.448



84, 10.750, 318.132



53, 1.075, 1.422



0, 0.000, 0.000



53, 0.007, 296.813

Same Dimension

The Same Dimension uses a secret algorithm to generate beautiful new colors.



84, 6.942, 2.264



93, 9.639, 2.483



85, 5.473, 46.937



44, 4.927, 2.415



37, 69.244, 27.534



6, 25.283, 11.522

Inverse Universe

The Inverse Universe completely reimagines the original color for something new.



84, 6.942, 2.264



93, 9.639, 2.483



86, 5.229, 228.031



44, 4.927, 2.415



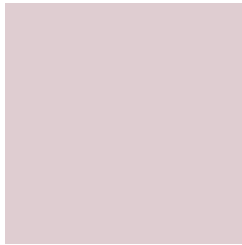
37, 69.244, 27.534



6, 25.283, 11.522

Previews

White Background



This preview shows how the CIELCh color 84, 6.944, 2.252 looks on a white background.

Color Contrast Check

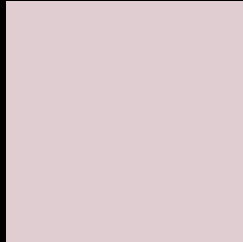
Large Text (above 18pt) WCAG AA × Fail

Any Text WCAG AA × Fail

Large Text (above 18pt) WCAG AAA × Fail

Any Text WCAG AAA × Fail

Black Background



This preview shows how the CIELCh color 84, 6.944, 2.252 looks on a black background.

Color Contrast Check

Large Text (above 18pt) WCAG AA ✓ Pass

Any Text WCAG AA ✓ Pass

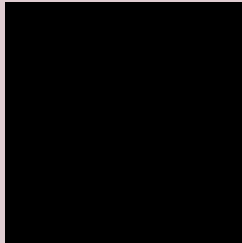
Large Text (above 18pt) WCAG AAA ✓ Pass

Any Text WCAG AAA ✓ Pass

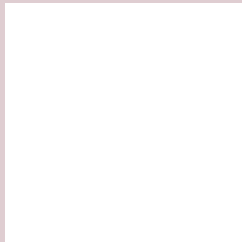
If you want to check with other color combinations, try the [Color Contrast Checker](#).

CIELCh 84, 6.944, 2.252

Background



This preview shows how black text looks on a background with the CIELCh color 84, 6.944, 2.252.



This preview shows how white text looks on a background with the CIELCh color 84, 6.944, 2.252.

Color Blindness Simulation

Color vision deficiency is a very complex topic, and I could not describe the different causes any better than Wikipedia does, so if you want to learn more, you should check out their [article about color blindness](#).

Dichromacy



Original Color

84, 6.944, 2.252

Protanopia

84, 2.425, 338.646

Deuteranopia

84, 10.608, 359.939



Tritanopia
84, 11.377, 332.467

Trichromacy



Original Color

84, 6.944, 2.252

Protanomaly

84, 3.989, 356.259

Deuteranomaly

84, 9.382, 0.476

Tritanomaly

84, 9.660, 339.266

Monochromacy



Original Color

84, 6.944, 2.252

Achromatopsia

85, 0.010, 296.813

Achromatomaly

84, 2.253, 5.827

CSS Examples

Text

The CSS property to change the color of the text to CIELCh 84, 6.944, 2.252 is called "color". The color property can be set on classes, ids or directly on the HTML element.

This example shows how text in the color `rgb(223, 205, 209)` looks like.

```
.text, #text, p{  
    color:rgb(223, 205, 209)  
}
```

If you want to add a text shadow in that color use the text-shadow property, you can generate a text shadow directly with our [CSS Text Shadow Generator](#).

Here you see how black text with a 4 pixel rgb(223, 205, 209) colored shadow looks like.

```
.shadow{ text-shadow: 4px 4px 2px rgb(223, 205, 209) }
```

Border

The CSS property to change the border of an element to CIELCh 84, 6.944, 2.252 is called "border". The border property can be set on classes, ids or directly on the HTML element.

This example shows the color as border, it can be applied via the CSS property "border" or "border-color".

```
.border, #border, table{ border:4px solid rgb(223, 205, 209) }
```

If only the border color should be changed use the property `border-color`.

```
.border{ border-color:rgb(223, 205, 209) }
```

If you want to add a box shadow in that color use:

Here you see how a box with a 4 pixel `rgb(223, 205, 209)` colored shadow looks like.

```
.boxshadow{ -moz-box-shadow:4px 4px 4px  
4px rgb(223, 205, 209); -webkit-box-  
shadow:4px 4px 4px 4px rgb(223, 205, 209);  
box-shadow:4px 4px 4px 4px rgb(223, 205,  
209) }
```

Background

The CSS property to change the background color of an element to CIELCh 84, 6.944, 2.252 is called "background". The background property can be set on classes, ids or directly on the HTML element.

```
.background, #background, body{  
background: rgb(223, 205, 209) }
```

If only the background color should be changed can be used:

```
.background{ background-color: rgb(223,  
205, 209) }
```

This example shows the color as background, it is applied via the CSS property "background".

To optimize and compress your CSS code, you can use our [online CSS compressor and optimizer](#) based on csstidy. If you want to create a linear or radial gradient as background or border, check our [CSS Gradient Generator](#).

Hey! You found this booklet interesting? Support Converting Colors with the new Membership Option!

The pro membership hides all ads, plus gives you double the colors in the color bucket, and more awesome pro features!

[Learn more, Memberships starting at \\$2.50/m!](#)

**Follow me
on Twitter!**

@ConvertingColor