

Converting Colors

CIE LCh(84, 7.112, 351.577)

Have a look what the booklet for
CIELCh(84, 7.112, 351.577) contains.

CIELCh(84, 7.238, 349.316)	3
<i>Conversions</i>	4
<i>Details</i>	6
<i>Harmonies</i>	12
<i>Previews</i>	21
<i>Color Blindness Simulation</i>	24
<i>CSS Examples</i>	27

Color

CIELCh(84, 7.238, 349.316)

Conversions

Conversions Part 1

Format	Color
Hex	DECDD4
RGB	222, 205, 212
RGB Percent	87%, 80%, 83%
CMY	0.1287, 0.1954, 0.1679
CMYK	0.00, 0.08, 0.05, 0.13
HSL	335°, 21%, 84%
HSV	335°, 8%, 87%
XYZ	63.9570, 64.0658, 71.3982
YIQ	210.8810, 7.8850, 5.7810

Conversions

Conversions Part 2

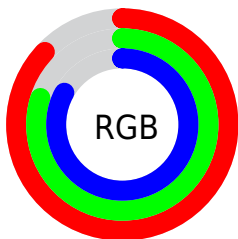
Format	Color
R _Y B	222, 205, 212
Decimal	14601684
CIE Lab	84.00, 7.11, -1.34
CIE LCh	84, 7.238, 349.316
Yxy	64.0658, 0.3207, 0.3213
Android (android.graphics.Color)	4292791764 (0xFFDECDD4)
YUV	210.8810, 0.5517, 9.7514
Hunter-Lab	80.0411, 2.5588, 3.1410

Details

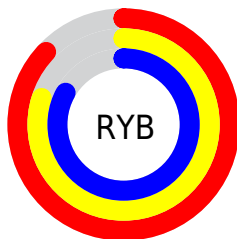
The CIELCh color $84, 7.238, 349.316$ is a light color, and the websafe version is hex `CCCCCC`. A complement of this color would be $87, 7.126, 168.094$, and the grayscale version is $85, 0.010, 296.813$.

A 20% lighter version of the original color is $100, 0.012, 296.813$, and $64, 7.046, 351.791$ is the 20% darker color. If you saturate the color by 10%, you get $78, 16.936, 350.351$, and if you desaturate by 10%, it is $90, 2.175, 168.726$.

Distribution



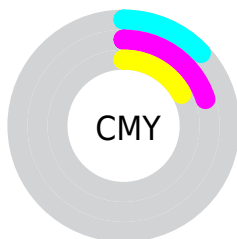
- Red (87%)
- Green (80%)
- Blue (83%)



- Red (87%)
- Yellow (80%)
- Blue (83%)



- Cyan (0%)
- Magenta (8%)
- Yellow (5%)
- Black (13%)



- Cyan (13%)
- Magenta (20%)
- Yellow (17%)


Brightness & Saturation Gradients

These gradients show how the CIELCh color 84, 7.238, 349.316 changes by changing the brightness by 10 percent. The first figure shows a shift by +10% for each color and the second figure -10%.

Similar to the brightness gradients but the following saturation gradients show a change of the CIELCh color 84, 7.238, 349.316 by changing the saturation by 10% instead.

 84, 7.238, 349.316

 84, 7.238, 349.316

 100, 7.238,
349.316

 74, 7.238, 349.316

 64, 7.238, 349.316

 54, 7.238, 349.316

 44, 7.238, 349.316

 34, 7.238, 349.316

 24, 7.238, 349.316

 14, 7.238, 349.316

 4, 7.238, 349.316

 0, 7.238, 349.316

84, 7.238, 349.316

84, 7.238, 349.316

78, 16.936,
350.351

90, 2.175, 168.726

73, 26.821,
351.491

96, 11.246,
167.758

67, 36.710,
352.808

98, 11.356,
189.378

62, 46.319,
354.368

98, 11.095,
198.765

58, 55.249,
356.262

54, 63.016,
358.618

51, 69.145, 1.599

49, 73.357, 5.384

■ 48, 75.837, 10.073

Harmonies

Complementary

The Complementary color scheme is a pair of colors which are on the opposite of each other on the color wheel.



84, 7.238, 349.316



87, 7.126, 168.094

Rectangle

The Rectangle color scheme consists of four colors that form a rectangle on the color wheel.



84, 7.238, 349.316



84, 7.238, 39.316



84, 7.238, 169.316



84, 7.238, 219.316

Sweetspot

The Sweet Spot groups the original color and five complimentary colors.



84, 7.236, 349.324



99, 2.100, 348.631



84, 9.693, 312.231



53, 1.194, 348.609



0, 0.000, 0.000



53, 0.007, 296.813

Same Dimension

The Same Dimension uses a secret algorithm to generate beautiful new colors.



84, 7.236, 349.324



94, 9.539, 349.467



84, 5.795, 27.095



44, 5.429, 349.506



37, 64.070, 10.339



6, 25.751, 0.975

Inverse Universe

The Inverse Universe completely reimagines the original color for something new.



84, 7.236, 349.324



94, 9.539, 349.467



87, 5.517, 206.870



44, 5.429, 349.506



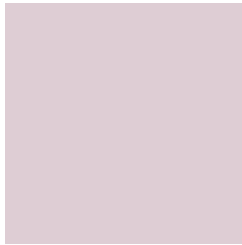
37, 64.070, 10.339



6, 25.751, 0.975

Previews

White Background



This preview shows how the CIELCh color 84, 7.238, 349.316 looks on a white background.

Color Contrast Check

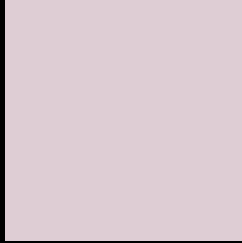
Large Text (above 18pt) WCAG AA × Fail

Any Text WCAG AA × Fail

Large Text (above 18pt) WCAG AAA × Fail

Any Text WCAG AAA × Fail

Black Background



This preview shows how the CIELCh color 84, 7.238, 349.316 looks on a black background.

Color Contrast Check

Large Text (above 18pt) WCAG AA ✓ Pass

Any Text WCAG AA ✓ Pass

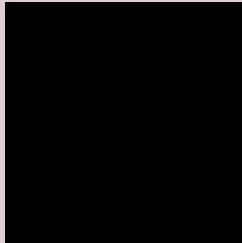
Large Text (above 18pt) WCAG AAA ✓ Pass

Any Text WCAG AAA ✓ Pass

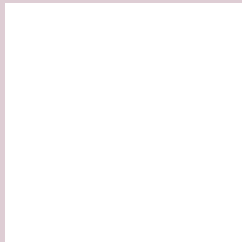
If you want to check with other color combinations, try the [Color Contrast Checker](#).

CIELCh 84, 7.238, 349.316

Background



This preview shows how black text looks on a background with the CIELCh color 84, 7.238, 349.316.

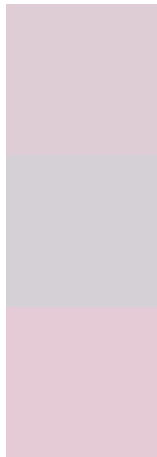


This preview shows how white text looks on a background with the CIELCh color 84, 7.238, 349.316.

Color Blindness Simulation

Color vision deficiency is a very complex topic, and I could not describe the different causes any better than Wikipedia does, so if you want to learn more, you should check out their [article about color blindness](#).

Dichromacy



Original Color

84, 7.238, 349.316

Protanopia

84, 3.501, 314.733

Deuteranopia

84, 10.570, 350.378



Tritanopia
84, 10.909, 329.583

Trichromacy



Original Color
84, 7.238, 349.316

Protanomaly
84, 4.571, 335.875

Deuteranomaly
84, 9.350, 349.691

Tritanomaly
84, 9.748, 335.484

Monochromacy



Original Color
84, 7.238, 349.316

Achromatopsia
85, 0.010, 296.813

Achromatomaly
84, 2.434, 353.744

CSS Examples

Text

The CSS property to change the color of the text to CIELCh 84, 7.238, 349.316 is called "color". The color property can be set on classes, ids or directly on the HTML element.

This example shows how text in the color `rgb(222, 205, 212)` looks like.

```
.text, #text, p{  
    color:rgb(222, 205, 212)  
}
```

If you want to add a text shadow in that color use the text-shadow property, you can generate a text shadow directly with our [CSS Text Shadow Generator](#).

Here you see how black text with a 4 pixel rgb(222, 205, 212) colored shadow looks like.

```
.shadow{ text-shadow: 4px 4px 2px rgb(222, 205, 212) }
```

Border

The CSS property to change the border of an element to CIELCh 84, 7.238, 349.316 is called "border". The border property can be set on classes, ids or directly on the HTML element.

This example shows the color as border, it can be applied via the CSS property "border" or "border-color".

```
.border, #border, table{ border:4px solid rgb(222, 205, 212) }
```

If only the border color should be changed use the property border-color.

```
.border{ border-color:rgb(222, 205, 212) }
```

If you want to add a box shadow in that color use:

Here you see how a box with a 4 pixel rgb(222, 205, 212) colored shadow looks like.

```
.boxshadow{ -moz-box-shadow:4px 4px 4px  
4px rgb(222, 205, 212); -webkit-box-  
shadow:4px 4px 4px 4px rgb(222, 205, 212);  
box-shadow:4px 4px 4px 4px rgb(222, 205,  
212) }
```

Background

The CSS property to change the background color of an element to CIELCh 84, 7.238, 349.316 is called "background". The background property can be set on classes, ids or directly on the HTML element.

```
.background, #background, body{  
background: rgb(222, 205, 212) }
```

If only the background color should be changed can be used:

```
.background{ background-color: rgb(222,  
205, 212) }
```

This example shows the color as background, it is applied via the CSS property "background".

To optimize and compress your CSS code, you can use our [online CSS compressor and optimizer](#) based on csstidy. If you want to create a linear or radial gradient as background or border, check our [CSS Gradient Generator](#).

Hey! You found this booklet interesting? Support Converting Colors with the new Membership Option!

The pro membership hides all ads, plus gives you double the colors in the color bucket, and more awesome pro features!

[Learn more, Memberships starting at \\$2.50/m!](#)

**Follow me
on Twitter!**

@ConvertingColor