

# Converting Colors

CIELCh(84, 7.434, 31.038)

Have a look what the booklet for  
CIELCh(84, 7.434, 31.038) contains.

<b>CIELCh(84, 7.499, 27.915)</b> .....	3
<i><b>Conversions</b></i> .....	4
<i><b>Details</b></i> .....	6
<i><b>Harmonies</b></i> .....	11
<i><b>Previews</b></i> .....	20
<i><b>Color Blindness Simulation</b></i> .....	23
<i><b>CSS Examples</b></i> .....	26

# Color

**CIELCh(84, 7.499, 27.915)**

# Conversions

## Conversions Part 1

Format	Color
Hex	E1CDCB
RGB	225, 205, 203
RGB Percent	88%, 80%, 80%
CMY	0.1172, 0.1956, 0.2034
CMYK	0.00, 0.09, 0.10, 0.12
HSL	5°, 27%, 84%
HSV	5°, 10%, 88%
XYZ	63.7444, 64.0658, 65.5817
YIQ	210.7520, 12.5620, 3.6180

# Conversions

## Conversions Part 2

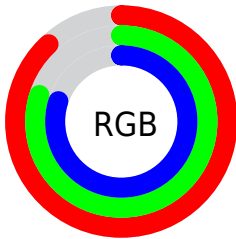
Format	Color
R <sub>Y</sub> B	225, 205, 203
Decimal	14798283
CIE Lab	84.00, 6.63, 3.51
CIE LCh	84, 7.499, 27.915
Yxy	64.0658, 0.3296, 0.3313
Android (android.graphics.Color)	4292988363 (0xFFE1CDCB)
YUV	210.7520, -3.8217, 12.4955
Hunter-Lab	80.0411, 2.0846, 7.4495

# Details

The CIELCh color **84, 7.499, 27.915** is a light color, and the websafe version is hex **CCCCCC**. A complement of this color would be **87, 7.036, 207.597**, and the grayscale version is **85, 0.010, 296.813**.

A 20% lighter version of the original color is **100, 0.012, 296.813**, and **64, 7.587, 28.430** is the 20% darker color. If you saturate the color by 10%, you get **78, 15.811, 28.420**, and if you desaturate by 10%, it is **90, 0.167, 211.354**.

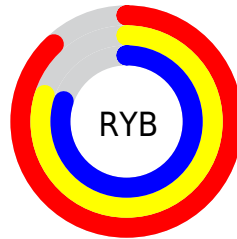
# Distribution



Red (88%)

Green (80%)

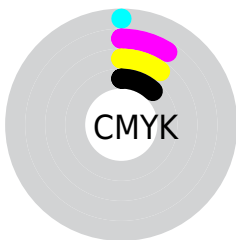
Blue (80%)



Red (88%)

Yellow (80%)

Blue (80%)

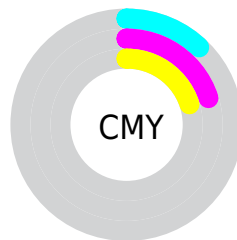


Cyan (0%)

Magenta (9%)

Yellow (10%)

Black (12%)



Cyan (12%)

Magenta (20%)

Yellow (20%)

# Brightness & Saturation Gradients

These gradients show how the CIELCh color 84, 7.499, 27.915 changes by changing the brightness by 10 percent. The first figure shows a shift by +10% for each color and the second figure -10%.

Similar to the brightness gradients but the following saturation gradients show a change of the CIELCh color 84, 7.499, 27.915 by changing the saturation by 10% instead.





84, 7.499, 27.915

84, 7.499, 27.915

78, 15.811, 28.420

90, 0.167, 211.354

73, 24.809, 29.071

95, 7.237, 207.609

68, 34.493, 29.968

98, 10.131,  
198.831

63, 44.807, 31.183

58, 55.612, 32.783

55, 66.650, 34.799

51, 77.443, 37.132

49, 86.990, 39.353

48, 93.715, 40.831

# Harmonies

# Complementary

The Complementary color scheme is a pair of colors which are on the opposite of each other on the color wheel.



84, 7.499, 27.915



87, 7.036, 207.597

# Rectangle

The Rectangle color scheme consists of four colors that form a rectangle on the color wheel.



84, 7.499, 27.915



84, 7.499, 77.915



84, 7.499, 207.915



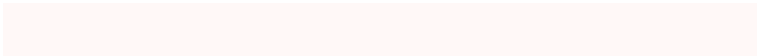
84, 7.499, 257.915

# Sweetspot

The Sweet Spot groups the original color and five complimentary colors.



84, 7.498, 27.932



98, 2.476, 27.528



84, 13.295, 327.310



52, 1.883, 27.608



0, 0.000, 0.000



53, 0.007, 296.813

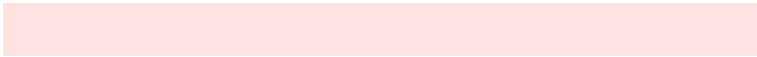


# Same Dimension

The Same Dimension uses a secret algorithm to generate beautiful new colors.



84, 7.498, 27.932



92, 10.282, 28.037



87, 7.496, 82.588



44, 4.339, 27.917



37, 77.792, 41.076



7, 23.988, 25.670



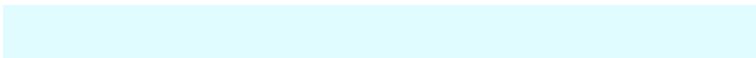


# Inverse Universe

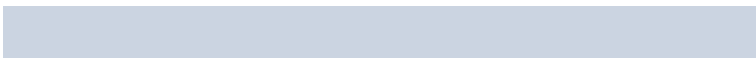
The Inverse Universe completely reimagines the original color for something new.



87, 7.036, 207.597



97, 9.497, 207.544



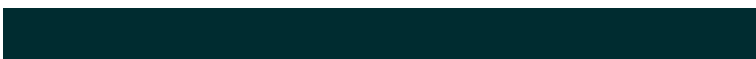
85, 7.416, 265.231



46, 4.081, 207.606



60, 34.041, 212.354

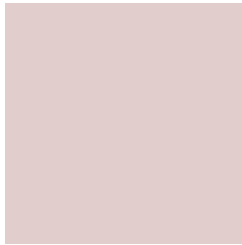


16, 14.174, 209.488



# Previews

## White Background



This preview shows how the CIELCh color 84, 7.499, 27.915 looks on a white background.

## Color Contrast Check

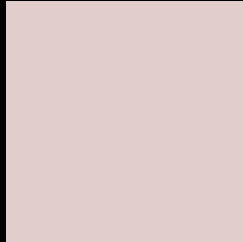
Large Text (above 18pt) WCAG AA × Fail

Any Text WCAG AA × Fail

Large Text (above 18pt) WCAG AAA × Fail

Any Text WCAG AAA × Fail

# Black Background



This preview shows how the CIELCh color 84, 7.499, 27.915 looks on a black background.

## Color Contrast Check

Large Text (above 18pt) WCAG AA ✓ Pass

Any Text WCAG AA ✓ Pass

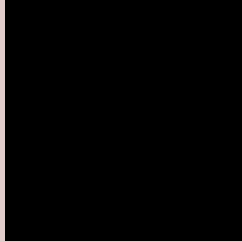
Large Text (above 18pt) WCAG AAA ✓ Pass

Any Text WCAG AAA ✓ Pass

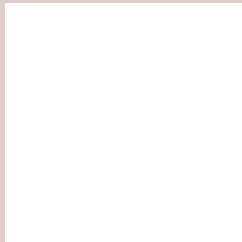
If you want to check with other color combinations, try the [Color Contrast Checker](#).

# CIELCh 84, 7.499, 27.915

## Background



This preview shows how black text looks on a background with the CIELCh color 84, 7.499, 27.915.

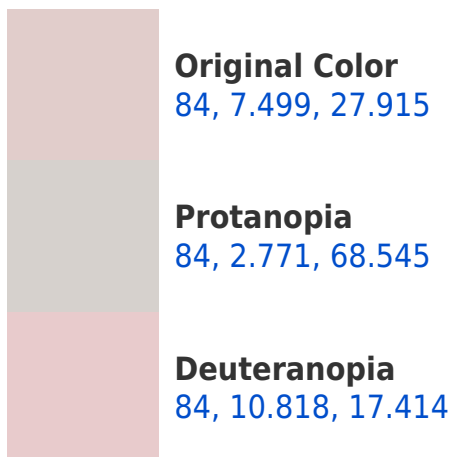


This preview shows how white text looks on a background with the CIELCh color 84, 7.499, 27.915.

# Color Blindness Simulation

Color vision deficiency is a very complex topic, and I could not describe the different causes any better than Wikipedia does, so if you want to learn more, you should check out their [article about color blindness](#).

## Dichromacy

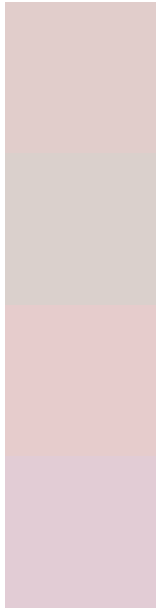




**Tritanopia**  
84, 12.139, 336.385



# Trichromacy



**Original Color**  
84, 7.499, 27.915

**Protanomaly**  
84, 4.228, 49.280

**Deuteranomaly**  
84, 9.675, 20.083

**Tritanomaly**  
84, 9.350, 349.691

# Monochromacy



**Original Color**  
84, 7.499, 27.915

**Achromatopsia**  
85, 0.010, 296.813

**Achromatomaly**  
84, 2.605, 30.999

# CSS Examples

## Text

The CSS property to change the color of the text to CIELCh 84, 7.499, 27.915 is called "color". The color property can be set on classes, ids or directly on the HTML element.

This example shows how text in the color `rgb(225, 205, 203)` looks like.

```
.text, #text, p{  
    color:rgb(225, 205, 203)  
}
```

If you want to add a text shadow in that color use the text-shadow property, you can generate a text shadow directly with our [CSS Text Shadow Generator](#).

Here you see how black text with a 4 pixel rgb(225, 205, 203) colored shadow looks like.

```
.shadow{ text-shadow: 4px 4px 2px rgb(225, 205, 203) }
```

## Border

The CSS property to change the border of an element to CIELCh 84, 7.499, 27.915 is called "border". The border property can be set on classes, ids or directly on the HTML element.

This example shows the color as border, it can be applied via the CSS property "border" or "border-color".

```
.border, #border, table{ border:4px solid rgb(225, 205, 203) }
```

If only the border color should be changed use the property `border-color`.

```
.border{ border-color:rgb(225, 205, 203) }
```

If you want to add a box shadow in that color use:

Here you see how a box with a 4 pixel `rgb(225, 205, 203)` colored shadow looks like.

```
.boxshadow{ -moz-box-shadow:4px 4px 4px  
4px rgb(225, 205, 203); -webkit-box-  
shadow:4px 4px 4px 4px rgb(225, 205, 203);  
box-shadow:4px 4px 4px 4px rgb(225, 205,  
203) }
```

# Background

The CSS property to change the background color of an element to CIELCh 84, 7.499, 27.915 is called "background". The background property can be set on classes, ids or directly on the HTML element.

```
.background, #background, body{  
background: rgb(225, 205, 203) }
```

If only the background color should be changed can be used:

```
.background{ background-color: rgb(225,  
205, 203) }
```

This example shows the color as background, it is applied via the CSS property "background".

To optimize and compress your CSS code, you can use our [online CSS compressor and optimizer](#) based on csstidy. If you want to create a linear or radial gradient as background or border, check our [CSS Gradient Generator](#).

Hey! You found this booklet interesting? Support Converting Colors with the new Membership Option!

The pro membership hides all ads, plus gives you double the colors in the color bucket, and more awesome pro features!

**[Learn more, Memberships starting at \\$2.50/m!](#)**

**Follow me  
on Twitter!**

@ConvertingColor