

Converting Colors

CIELCh(84, 7.576, 19.903)

Have a look what the booklet for
CIELCh(84, 7.576, 19.903) contains.

CIELCh(84, 7.401, 19.889)	3
<i>Conversions</i>	4
<i>Details</i>	6
<i>Harmonies</i>	11
<i>Previews</i>	20
<i>Color Blindness Simulation</i>	23
<i>CSS Examples</i>	26

Color

CIELCh(84, 7.401, 19.889)

Conversions

Conversions Part 1

Format	Color
Hex	E1CDCC
RGB	225, 205, 205
RGB Percent	88%, 80%, 80%
CMY	0.1177, 0.1961, 0.1961
CMYK	0.00, 0.09, 0.09, 0.12
HSL	0°, 25%, 84%
HSV	0°, 9%, 88%
XYZ	63.8900, 64.0658, 66.7451
YIQ	210.9800, 11.9200, 4.2400

Conversions

Conversions Part 2

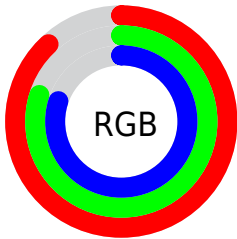
Format	Color
R _{YB}	225, 205, 205
Decimal	14798285
CIE Lab	84.00, 6.96, 2.52
CIE LCh	84, 7.401, 19.889
Yxy	64.0658, 0.3281, 0.3290
Android (android.graphics.Color)	4292988365 (0xFFE1CDCD)
YUV	210.9800, -2.9481, 12.2955
Hunter-Lab	80.0411, 2.4095, 6.5877

Details

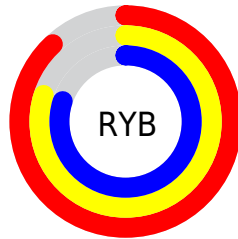
The CIELCh color **84, 7.401, 19.889** is a light color, and the websafe version is hex **CCCCCC**. A complement of this color would be **88, 6.996, 199.022**, and the grayscale version is **85, 0.010, 296.813**.

A 20% lighter version of the original color is **100, 0.012, 296.813**, and **64, 7.470, 20.055** is the 20% darker color. If you saturate the color by 10%, you get **78, 16.358, 20.749**, and if you desaturate by 10%, it is **90, 0.887, 200.045**.

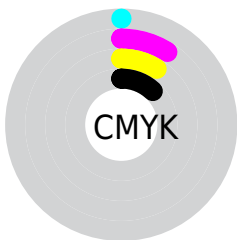
Distribution



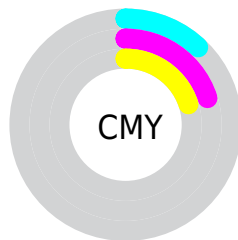
- Red (88%)
- Green (80%)
- Blue (80%)



- Red (88%)
- Yellow (80%)
- Blue (80%)



- Cyan (0%)
- Magenta (9%)
- Yellow (9%)
- Black (12%)



- Cyan (12%)
- Magenta (20%)
- Yellow (20%)

Brightness & Saturation Gradients

These gradients show how the CIELCh color 84, 7.401, 19.889 changes by changing the brightness by 10 percent. The first figure shows a shift by +10% for each color and the second figure -10%.

Similar to the brightness gradients but the following saturation gradients show a change of the CIELCh color 84, 7.401, 19.889 by changing the saturation by 10% instead.



84, 7.401, 19.889

84, 7.401, 19.889

78, 16.358, 20.749

90, 0.887, 200.045

72, 25.999, 21.802

97, 8.547, 198.950

66, 36.277, 23.169

98, 10.178,
198.828

61, 47.065, 24.958

57, 58.127, 27.278

53, 69.118, 30.208

50, 79.549, 33.671

48, 88.529, 37.183

47, 94.517, 39.734

Harmonies

Complementary

The Complementary color scheme is a pair of colors which are on the opposite of each other on the color wheel.



84, 7.401, 19.889



88, 6.996, 199.022

Rectangle

The Rectangle color scheme consists of four colors that form a rectangle on the color wheel.



84, 7.401, 19.889



84, 7.401, 69.889



84, 7.401, 199.889



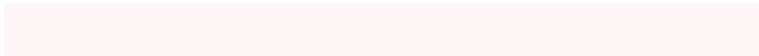
84, 7.401, 249.889

Sweetspot

The Sweet Spot groups the original color and five complimentary colors.



84, 7.399, 19.905



98, 2.702, 19.359



85, 12.787, 324.908



52, 2.054, 19.460



0, 0.000, 0.000



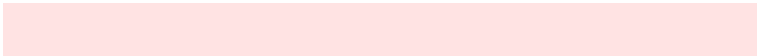
53, 0.007, 296.813

Same Dimension

The Same Dimension uses a secret algorithm to generate beautiful new colors.



84, 7.399, 19.905



92, 10.224, 20.079



87, 6.381, 74.273



44, 4.727, 19.949



36, 79.111, 39.955



6, 25.537, 20.948

Inverse Universe

The Inverse Universe completely reimagines the original color for something new.



88, 6.996, 199.022



98, 9.529, 198.890



86, 6.252, 256.636



46, 4.453, 198.988



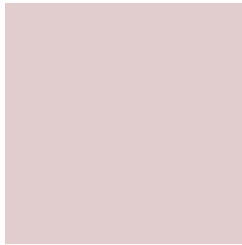
65, 37.929, 196.416



17, 15.581, 196.411

Previews

White Background



This preview shows how the CIELCh color 84, 7.401, 19.889 looks on a white background.

Color Contrast Check

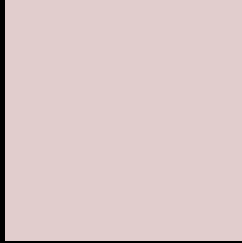
Large Text (above 18pt) WCAG AA × Fail

Any Text WCAG AA × Fail

Large Text (above 18pt) WCAG AAA × Fail

Any Text WCAG AAA × Fail

Black Background



This preview shows how the CIE LCh color 84, 7.401, 19.889 looks on a black background.

Color Contrast Check

Large Text (above 18pt) WCAG AA ✓ Pass

Any Text WCAG AA ✓ Pass

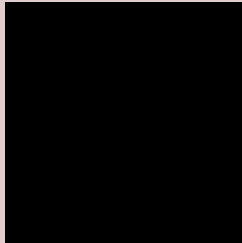
Large Text (above 18pt) WCAG AAA ✓ Pass

Any Text WCAG AAA ✓ Pass

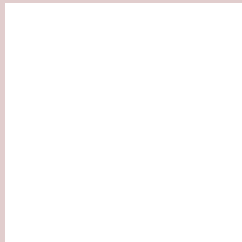
If you want to check with other color combinations, try the [Color Contrast Checker](#).

CIELCh 84, 7.401, 19.889

Background



This preview shows how black text looks on a background with the CIELCh color 84, 7.401, 19.889.



This preview shows how white text looks on a background with the CIELCh color 84, 7.401, 19.889.

Color Blindness Simulation

Color vision deficiency is a very complex topic, and I could not describe the different causes any better than Wikipedia does, so if you want to learn more, you should check out their [article about color blindness](#).

Dichromacy



Original Color

84, 7.401, 19.889

Protanopia

84, 2.095, 49.338

Deuteranopia

84, 10.460, 14.417



Tritanopia
84, 12.139, 336.385

Trichromacy



Original Color
84, 7.401, 19.889

Protanomaly
84, 3.811, 35.505

Deuteranomaly
84, 9.295, 16.828

Tritanomaly
84, 9.620, 346.979

Monochromacy



Original Color
84, 7.401, 19.889

Achromatopsia
85, 0.010, 296.813

Achromatomaly
84, 2.553, 19.372

CSS Examples

Text

The CSS property to change the color of the text to CIELCh 84, 7.401, 19.889 is called "color". The color property can be set on classes, ids or directly on the HTML element.

This example shows how text in the color `rgb(225, 205, 205)` looks like.

```
.text, #text, p{  
    color:rgb(225, 205, 205)  
}
```

If you want to add a text shadow in that color use the text-shadow property, you can generate a text shadow directly with our [CSS Text Shadow Generator](#).

Here you see how black text with a 4 pixel rgb(225, 205, 205) colored shadow looks like.

```
.shadow{ text-shadow: 4px 4px 2px rgb(225, 205, 205) }
```

Border

The CSS property to change the border of an element to CIELCh 84, 7.401, 19.889 is called "border". The border property can be set on classes, ids or directly on the HTML element.

This example shows the color as border, it can be applied via the CSS property "border" or "border-color".

```
.border, #border, table{ border:4px solid rgb(225, 205, 205) }
```

If only the border color should be changed use the property `border-color`.

```
.border{ border-color:rgb(225, 205, 205) }
```

If you want to add a box shadow in that color use:

Here you see how a box with a 4 pixel `rgb(225, 205, 205)` colored shadow looks like.

```
.boxshadow{ -moz-box-shadow:4px 4px 4px  
4px rgb(225, 205, 205); -webkit-box-  
shadow:4px 4px 4px 4px rgb(225, 205, 205);  
box-shadow:4px 4px 4px 4px rgb(225, 205,  
205) }
```

Background

The CSS property to change the background color of an element to CIELCh 84, 7.401, 19.889 is called "background". The background property can be set on classes, ids or directly on the HTML element.

```
.background, #background, body{  
background: rgb(225, 205, 205) }
```

If only the background color should be changed can be used:

```
.background{ background-color: rgb(225,  
205, 205) }
```

This example shows the color as background, it is applied via the CSS property "background".

To optimize and compress your CSS code, you can use our [online CSS compressor and optimizer](#) based on csstidy. If you want to create a linear or radial gradient as background or border, check our [CSS Gradient Generator](#).

Hey! You found this booklet interesting? Support Converting Colors with the new Membership Option!

The pro membership hides all ads, plus gives you double the colors in the color bucket, and more awesome pro features!

[Learn more, Memberships starting at \\$2.50/m!](#)

**Follow me
on Twitter!**

@ConvertingColor