

Converting Colors

CIELCh(84, 7.731, 19.834)

Have a look what the booklet for
CIELCh(84, 7.731, 19.834) contains.

CIELCh(84, 7.777, 19.921)	3
<i>Conversions</i>	4
<i>Details</i>	6
<i>Harmonies</i>	11
<i>Previews</i>	20
<i>Color Blindness Simulation</i>	23
<i>CSS Examples</i>	26

Color

CIELCh(84, 7.777, 19.921)

Conversions

Conversions Part 1

Format	Color
Hex	E2CDCD
RGB	226, 205, 205
RGB Percent	89%, 80%, 80%
CMY	0.1147, 0.1970, 0.1971
CMYK	0.00, 0.09, 0.09, 0.11
HSL	0°, 26%, 84%
HSV	0°, 9%, 89%
XYZ	64.0442, 64.0658, 66.5897
YIQ	211.2790, 12.5160, 4.4520

Conversions

Conversions Part 2

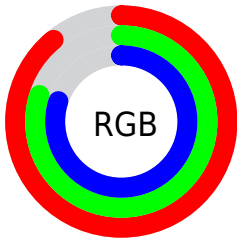
Format	Color
R _Y B	226, 205, 205
Decimal	14863821
CIE Lab	84.00, 7.31, 2.65
CIE LCh	84, 7.777, 19.921
Yxy	64.0658, 0.3289, 0.3290
Android (android.graphics.Color)	4293053901 (0xFFE2CDCD)
YUV	211.2790, -3.0955, 12.9103
Hunter-Lab	80.0411, 2.7534, 6.7028

Details

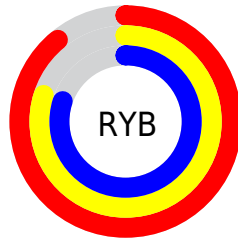
The CIELCh color **84, 7.777, 19.921** is a light color, and the websafe version is hex **CCCCCC**. A complement of this color would be **88, 7.331, 198.995**, and the grayscale version is **85, 0.010, 296.813**.

A 20% lighter version of the original color is **100, 0.012, 296.813**, and **64, 7.871, 20.096** is the 20% darker color. If you saturate the color by 10%, you get **78, 16.787, 20.786**, and if you desaturate by 10%, it is **90, 0.561, 200.464**.

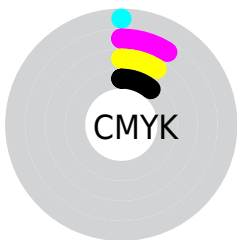
Distribution



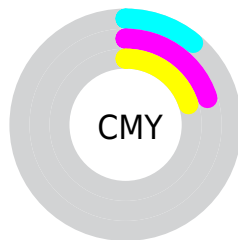
- Red (89%)
- Green (80%)
- Blue (80%)



- Red (89%)
- Yellow (80%)
- Blue (80%)



- Cyan (0%)
- Magenta (9%)
- Yellow (9%)
- Black (11%)



- Cyan (11%)
- Magenta (20%)
- Yellow (20%)

Brightness & Saturation Gradients

These gradients show how the CIELCh color 84, 7.777, 19.921 changes by changing the brightness by 10 percent. The first figure shows a shift by +10% for each color and the second figure -10%.

Similar to the brightness gradients but the following saturation gradients show a change of the CIELCh color 84, 7.777, 19.921 by changing the saturation by 10% instead.



84, 7.777, 19.921

84, 7.777, 19.921

78, 16.787, 20.786

90, 0.561, 200.464

72, 26.482, 21.850

97, 8.266, 198.969

66, 36.814, 23.234

98, 9.927, 198.845

61, 47.649, 25.043

57, 58.746, 27.388

53, 69.754, 30.345

50, 80.175, 33.825

48, 89.083, 37.319

47, 94.984, 39.832

Harmonies

Complementary

The Complementary color scheme is a pair of colors which are on the opposite of each other on the color wheel.



84, 7.777, 19.921



88, 7.331, 198.995

Rectangle

The Rectangle color scheme consists of four colors that form a rectangle on the color wheel.



84, 7.777, 19.921



84, 7.777, 69.921



84, 7.777, 199.921



84, 7.777, 249.921

Sweetspot

The Sweet Spot groups the original color and five complimentary colors.



84, 7.775, 19.936



98, 2.702, 19.357



85, 13.418, 324.932



52, 2.054, 19.459



0, 0.000, 0.000



53, 0.007, 296.813

Same Dimension

The Same Dimension uses a secret algorithm to generate beautiful new colors.



84, 7.775, 19.936



92, 10.224, 20.078



87, 6.701, 74.226



44, 4.727, 19.947



36, 79.111, 39.955



6, 25.538, 20.947

Inverse Universe

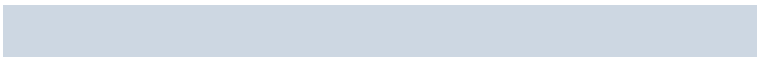
The Inverse Universe completely reimagines the original color for something new.



88, 7.331, 198.995



98, 9.529, 198.888



86, 6.558, 256.692



46, 4.453, 198.986



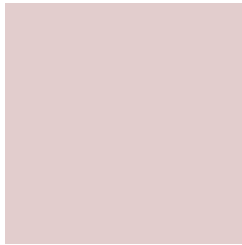
65, 37.930, 196.413



17, 15.581, 196.409

Previews

White Background



This preview shows how the CIELCh color 84, 7.777, 19.921 looks on a white background.

Color Contrast Check

Large Text (above 18pt) WCAG AA × Fail

Any Text WCAG AA × Fail

Large Text (above 18pt) WCAG AAA × Fail

Any Text WCAG AAA × Fail

Black Background



This preview shows how the CIELCh color 84, 7.777, 19.921 looks on a black background.

Color Contrast Check

Large Text (above 18pt) WCAG AA ✓ Pass

Any Text WCAG AA ✓ Pass

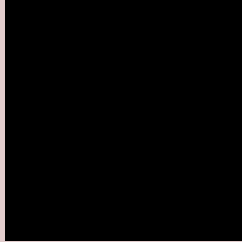
Large Text (above 18pt) WCAG AAA ✓ Pass

Any Text WCAG AAA ✓ Pass

If you want to check with other color combinations, try the [Color Contrast Checker](#).

CIELCh 84, 7.777, 19.921

Background



This preview shows how black text looks on a background with the CIELCh color 84, 7.777, 19.921.



This preview shows how white text looks on a background with the CIELCh color 84, 7.777, 19.921.

Color Blindness Simulation

Color vision deficiency is a very complex topic, and I could not describe the different causes any better than Wikipedia does, so if you want to learn more, you should check out their [article about color blindness](#).

Dichromacy



Original Color


84, 7.777, 19.921

Protanopia

84, 2.095, 49.338

Deuteranopia

84, 10.460, 14.417



Tritanopia
84, 12.402, 337.589

Trichromacy



Original Color
84, 7.777, 19.921

Protanomaly
84, 4.070, 26.977

Deuteranomaly
84, 9.295, 16.828

Tritanomaly
84, 9.929, 348.179

Monochromacy



Original Color
84, 7.777, 19.921

Achromatopsia
85, 0.010, 296.813

Achromatomaly
84, 2.553, 19.372

CSS Examples

Text

The CSS property to change the color of the text to CIELCh 84, 7.777, 19.921 is called "color". The color property can be set on classes, ids or directly on the HTML element.

This example shows how text in the color `rgb(226, 205, 205)` looks like.

```
.text, #text, p{  
    color:rgb(226, 205, 205)  
}
```

If you want to add a text shadow in that color use the text-shadow property, you can generate a text shadow directly with our [CSS Text Shadow Generator](#).

Here you see how black text with a 4 pixel rgb(226, 205, 205) colored shadow looks like.

```
.shadow{ text-shadow: 4px 4px 2px rgb(226, 205, 205) }
```

Border

The CSS property to change the border of an element to CIELCh 84, 7.777, 19.921 is called "border". The border property can be set on classes, ids or directly on the HTML element.

This example shows the color as border, it can be applied via the CSS property "border" or "border-color".

```
.border, #border, table{ border:4px solid rgb(226, 205, 205) }
```

If only the border color should be changed use the property border-color.

```
.border{ border-color:rgb(226, 205, 205) }
```

If you want to add a box shadow in that color use:

Here you see how a box with a 4 pixel rgb(226, 205, 205) colored shadow looks like.

```
.boxshadow{ -moz-box-shadow:4px 4px 4px  
4px rgb(226, 205, 205); -webkit-box-  
shadow:4px 4px 4px 4px rgb(226, 205, 205);  
box-shadow:4px 4px 4px 4px rgb(226, 205,  
205) }
```

Background

The CSS property to change the background color of an element to CIELCh 84, 7.777, 19.921 is called "background". The background property can be set on classes, ids or directly on the HTML element.

```
.background, #background, body{  
background: rgb(226, 205, 205) }
```

If only the background color should be changed can be used:

```
.background{ background-color: rgb(226,  
205, 205) }
```

This example shows the color as background, it is applied via the CSS property "background".

To optimize and compress your CSS code, you can use our [online CSS compressor and optimizer](#) based on csstidy. If you want to create a linear or radial gradient as background or border, check our [CSS Gradient Generator](#).

Hey! You found this booklet interesting? Support Converting Colors with the new Membership Option!

The pro membership hides all ads, plus gives you double the colors in the color bucket, and more awesome pro features!

[Learn more, Memberships starting at \\$2.50/m!](#)

**Follow me
on Twitter!**

@ConvertingColor