

Converting Colors

CIELCh(84, 8.728, 30.347)

Have a look what the booklet for
CIELCh(84, 8.728, 30.347) contains.

CIELCh(84, 8.728, 30.347)	3
<i>Conversions</i>	4
<i>Details</i>	6
<i>Harmonies</i>	11
<i>Previews</i>	20
<i>Color Blindness Simulation</i>	23
<i>CSS Examples</i>	26

Color

CIELCh(84, 8.728, 30.347)

Conversions

Conversions Part 1

Format	Color
Hex	E3CCC9
RGB	227, 204, 201
RGB Percent	89%, 80%, 79%
CMY	0.1079, 0.1981, 0.2099
CMYK	0.00, 0.10, 0.11, 0.11
HSL	7°, 32%, 84%
HSV	7°, 11%, 89%
XYZ	64.1409, 64.0658, 64.5401
YIQ	210.5350, 14.6710, 3.9430

Conversions

Conversions Part 2

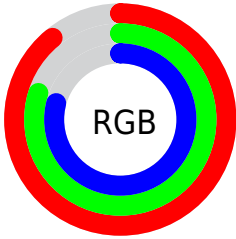
Format	Color
R _Y B	227, 204, 201
Decimal	14929097
CIE Lab	84.00, 7.53, 4.41
CIE LCh	84, 8.728, 30.347
Yxy	64.0658, 0.3328, 0.3324
Android (android.graphics.Color)	4293119177 (0xFFE3CCC9)
YUV	210.5350, -4.7008, 14.4398
Hunter-Lab	80.0411, 2.9690, 8.2210

Details

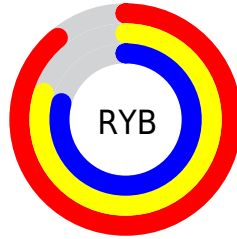
The CIELCh color **84, 8.728, 30.347** is a light color, and the websafe version is hex **CCCCCC**. A complement of this color would be **88, 8.096, 210.155**, and the grayscale version is **85, 0.010, 296.813**.

A 20% lighter version of the original color is **100, 0.012, 296.813**, and **64, 8.511, 31.371** is the 20% darker color. If you saturate the color by 10%, you get **79, 17.057, 30.755**, and if you desaturate by 10%, it is **90, 1.050, 29.634**.

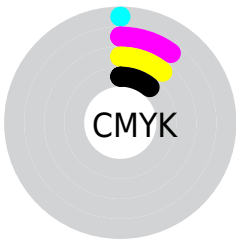
Distribution



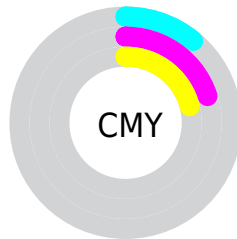
- Red (89%)
- Green (80%)
- Blue (79%)



- Red (89%)
- Yellow (80%)
- Blue (79%)



- Cyan (0%)
- Magenta (10%)
- Yellow (11%)
- Black (11%)



- Cyan (11%)
- Magenta (20%)
- Yellow (21%)

Brightness & Saturation Gradients

These gradients show how the CIELCh color 84, 8.728, 30.347 changes by changing the brightness by 10 percent. The first figure shows a shift by +10% for each color and the second figure -10%.

Similar to the brightness gradients but the following saturation gradients show a change of the CIELCh color 84, 8.728, 30.347 by changing the saturation by 10% instead.



84, 8.728, 30.347

84, 8.728, 30.347

79, 17.057, 30.755

90, 1.050, 29.634

73, 26.078, 31.313

95, 6.028, 210.209

68, 35.795, 32.107

98, 9.351, 198.885

63, 46.155, 33.203

59, 57.023, 34.655

55, 68.131, 36.471

52, 78.950, 38.515

50, 88.322, 40.297

48, 94.061, 41.239

Harmonies

Complementary

The Complementary color scheme is a pair of colors which are on the opposite of each other on the color wheel.



84, 8.728, 30.347



88, 8.096, 210.155

Rectangle

The Rectangle color scheme consists of four colors that form a rectangle on the color wheel.



84, 8.728, 30.347



84, 8.728, 80.347



84, 8.728, 210.347



84, 8.728, 260.347

Sweetspot

The Sweet Spot groups the original color and five complimentary colors.



84, 8.727, 30.362



98, 2.425, 29.968



84, 15.521, 327.915



52, 1.845, 30.041



0, 0.000, 0.000



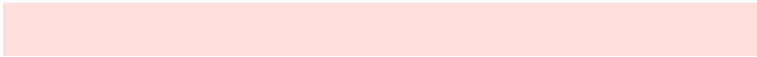
53, 0.007, 296.813

Same Dimension

The Same Dimension uses a secret algorithm to generate beautiful new colors.



84, 8.727, 30.362



91, 11.852, 30.456



87, 8.999, 83.928



45, 4.330, 30.294



38, 78.163, 41.485



8, 24.989, 28.007

Inverse Universe

The Inverse Universe completely reimagines the original color for something new.



88, 8.096, 210.155



97, 10.793, 210.134



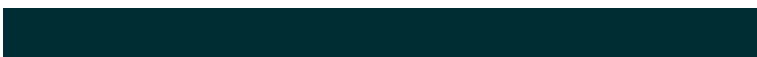
85, 8.903, 267.012



47, 4.072, 210.181



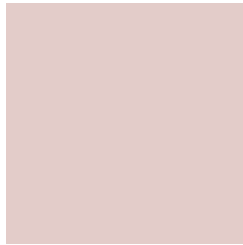
60, 33.802, 217.304



16, 14.359, 213.691

Previews

White Background



This preview shows how the CIELCh color 84, 8.728, 30.347 looks on a white background.

Color Contrast Check

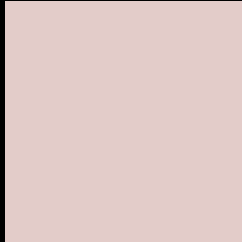
Large Text (above 18pt) WCAG AA × Fail

Any Text WCAG AA × Fail

Large Text (above 18pt) WCAG AAA × Fail

Any Text WCAG AAA × Fail

Black Background



This preview shows how the CIELCh color 84, 8.728, 30.347 looks on a black background.

Color Contrast Check

Large Text (above 18pt) WCAG AA ✓ Pass

Any Text WCAG AA ✓ Pass

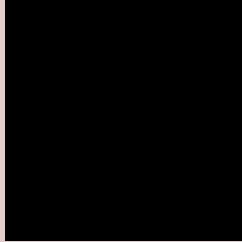
Large Text (above 18pt) WCAG AAA ✓ Pass

Any Text WCAG AAA ✓ Pass

If you want to check with other color combinations, try the [Color Contrast Checker](#).

CIELCh 84, 8.728, 30.347

Background



This preview shows how black text looks on a background with the CIELCh color 84, 8.728, 30.347.

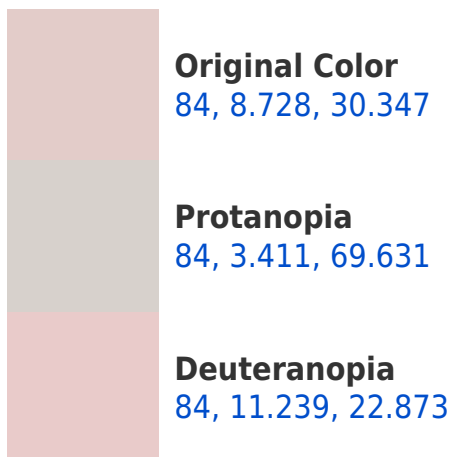


This preview shows how white text looks on a background with the CIELCh color 84, 8.728, 30.347.

Color Blindness Simulation

Color vision deficiency is a very complex topic, and I could not describe the different causes any better than Wikipedia does, so if you want to learn more, you should check out their [article about color blindness](#).

Dichromacy





Tritanopia
84, 13.232, 340.925

Trichromacy



Original Color
84, 8.728, 30.347

Protanomaly
84, 5.236, 43.256

Deuteranomaly
84, 10.145, 26.022

Tritanomaly
84, 10.658, 353.876

Monochromacy



Original Color
84, 8.728, 30.347

Achromatopsia
85, 0.010, 296.813

Achromatomaly
84, 2.966, 29.615

CSS Examples

Text

The CSS property to change the color of the text to CIELCh 84, 8.728, 30.347 is called "color". The color property can be set on classes, ids or directly on the HTML element.

This example shows how text in the color `rgb(227, 204, 201)` looks like.

```
.text, #text, p{  
    color:rgb(227, 204, 201)  
}
```

If you want to add a text shadow in that color use the text-shadow property, you can generate a text shadow directly with our [CSS Text Shadow Generator](#).

Here you see how black text with a 4 pixel rgb(227, 204, 201) colored shadow looks like.

```
.shadow{ text-shadow: 4px 4px 2px rgb(227, 204, 201) }
```

Border

The CSS property to change the border of an element to CIELCh 84, 8.728, 30.347 is called "border". The border property can be set on classes, ids or directly on the HTML element.

This example shows the color as border, it can be applied via the CSS property "border" or "border-color".

```
.border, #border, table{ border:4px solid rgb(227, 204, 201) }
```

If only the border color should be changed use the property `border-color`.

```
.border{ border-color:rgb(227, 204, 201) }
```

If you want to add a box shadow in that color use:

Here you see how a box with a 4 pixel `rgb(227, 204, 201)` colored shadow looks like.

```
.boxshadow{ -moz-box-shadow:4px 4px 4px  
4px rgb(227, 204, 201); -webkit-box-  
shadow:4px 4px 4px 4px rgb(227, 204, 201);  
box-shadow:4px 4px 4px 4px rgb(227, 204,  
201) }
```

Background

The CSS property to change the background color of an element to CIELCh 84, 8.728, 30.347 is called "background". The background property can be set on classes, ids or directly on the HTML element.

```
.background, #background, body{  
background: rgb(227, 204, 201) }
```

If only the background color should be changed can be used:

```
.background{ background-color: rgb(227,  
204, 201) }
```

This example shows the color as background, it is applied via the CSS property "background".

To optimize and compress your CSS code, you can use our [online CSS compressor and optimizer](#) based on csstidy. If you want to create a linear or radial gradient as background or border, check our [CSS Gradient Generator](#).

Hey! You found this booklet interesting? Support Converting Colors with the new Membership Option!

The pro membership hides all ads, plus gives you double the colors in the color bucket, and more awesome pro features!

[Learn more, Memberships starting at \\$2.50/m!](#)

**Follow me
on Twitter!**

@ConvertingColor