

Converting Colors

CIELCh(84, 9.849, 13.952)

Have a look what the booklet for
CIELCh(84, 9.849, 13.952) contains.

CIELCh(84, 10.084, 14.168)	3
<i>Conversions</i>	4
<i>Details</i>	6
<i>Harmonies</i>	11
<i>Previews</i>	20
<i>Color Blindness Simulation</i>	23
<i>CSS Examples</i>	26

Color

CIELCh(84, 10.084, 14.168)

Conversions

Conversions Part 1

Format	Color
Hex	E6CBCD
RGB	230, 203, 205
RGB Percent	90%, 80%, 80%
CMY	0.0973, 0.2032, 0.1954
CMYK	0.00, 0.12, 0.11, 0.10
HSL	356°, 35%, 85%
HSV	356°, 12%, 90%
XYZ	65.1310, 64.0658, 66.8036
YIQ	211.3010, 15.4500, 6.3460

Conversions

Conversions Part 2

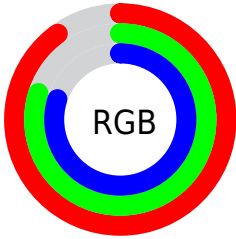
Format	Color
R _Y B	230, 203, 205
Decimal	15125453
CIE Lab	84.00, 9.78, 2.47
CIE LCh	84, 10.084, 14.168
Yxy	64.0658, 0.3323, 0.3269
Android (android.graphics.Color)	4293315533 (0xFFE6CBCD)
YUV	211.3010, -3.1064, 16.3990
Hunter-Lab	80.0411, 5.1771, 6.5444

Details

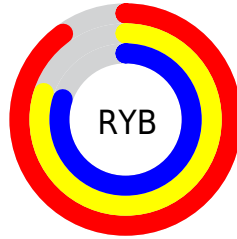
The CIELCh color **84, 10.084, 14.168** is a light color, and the websafe version is hex **FFCCCC**. A complement of this color would be **89, 9.452, 192.493**, and the grayscale version is **85, 0.010, 296.813**.

A 20% lighter version of the original color is **100, 0.012, 296.813**, and **64, 9.923, 13.929** is the 20% darker color. If you saturate the color by 10%, you get **78, 19.327, 15.226**, and if you desaturate by 10%, it is **90, 1.438, 12.993**.

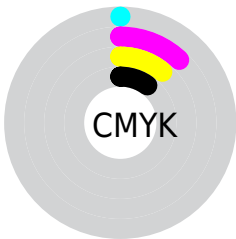
Distribution



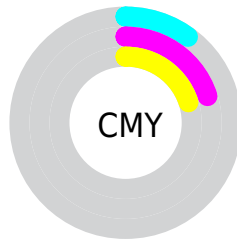
- Red (90%)
- Green (80%)
- Blue (80%)



- Red (90%)
- Yellow (80%)
- Blue (80%)



- Cyan (0%)
- Magenta (12%)
- Yellow (11%)
- Black (10%)



- Cyan (10%)
- Magenta (20%)
- Yellow (20%)


Brightness & Saturation Gradients

These gradients show how the CIELCh color 84, 10.084, 14.168 changes by changing the brightness by 10 percent. The first figure shows a shift by +10% for each color and the second figure -10%.

Similar to the brightness gradients but the following saturation gradients show a change of the CIELCh color 84, 10.084, 14.168 by changing the saturation by 10% instead.

 84, 10.084, 14.168

 84, 10.084, 14.168

 100, 10.084,
14.168

 74, 10.084, 14.168

 64, 10.084, 14.168

 54, 10.084, 14.168

 44, 10.084, 14.168

 34, 10.084, 14.168

 24, 10.084, 14.168

 14, 10.084, 14.168

 4, 10.084, 14.168

 0, 10.084, 14.168

84, 10.084, 14.168

84, 10.084, 14.168

78, 19.327, 15.226

90, 1.438, 12.993

72, 29.144, 16.511

97, 6.621, 192.820

66, 39.435, 18.134

98, 8.460, 198.949

61, 50.007, 20.207

57, 60.571, 22.861

53, 70.768, 26.201

50, 80.224, 30.211

49, 88.462, 34.546

48, 93.777, 37.617

Harmonies

Complementary

The Complementary color scheme is a pair of colors which are on the opposite of each other on the color wheel.



84, 10.084, 14.168



89, 9.452, 192.493

Rectangle

The Rectangle color scheme consists of four colors that form a rectangle on the color wheel.



84, 10.084, 14.168



84, 10.084, 64.168



84, 10.084, 194.168



84, 10.084, 244.168

Sweetspot

The Sweet Spot groups the original color and five complimentary colors.



84, 10.082, 14.179



97, 3.638, 13.408



84, 16.787, 322.748



51, 2.592, 13.496



0, 0.000, 0.000



53, 0.007, 296.813

Same Dimension

The Same Dimension uses a secret algorithm to generate beautiful new colors.



84, 10.082, 14.179



90, 13.182, 14.409



87, 8.293, 64.592



45, 4.831, 13.961



37, 76.917, 36.978



6, 26.882, 18.703

Inverse Universe

The Inverse Universe completely reimagines the original color for something new.



84, 10.082, 14.179



90, 13.182, 14.409



87, 7.930, 247.351



45, 4.831, 13.961



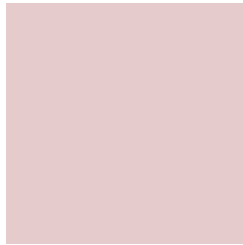
37, 76.917, 36.978



6, 26.882, 18.703

Previews

White Background



This preview shows how the CIELCh color 84, 10.084, 14.168 looks on a white background.

Color Contrast Check

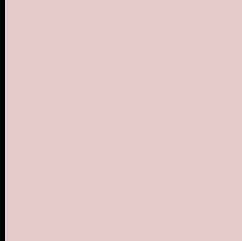
Large Text (above 18pt) WCAG AA × Fail

Any Text WCAG AA × Fail

Large Text (above 18pt) WCAG AAA × Fail

Any Text WCAG AAA × Fail

Black Background



This preview shows how the CIELCh color 84, 10.084, 14.168 looks on a black background.

Color Contrast Check

Large Text (above 18pt) WCAG AA ✓ Pass

Any Text WCAG AA ✓ Pass

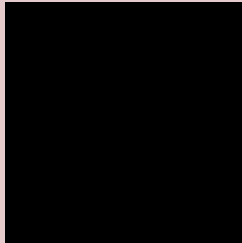
Large Text (above 18pt) WCAG AAA ✓ Pass

Any Text WCAG AAA ✓ Pass

If you want to check with other color combinations, try the [Color Contrast Checker](#).

CIELCh 84, 10.084, 14.168

Background



This preview shows how black text looks on a background with the CIELCh color 84, 10.084, 14.168.



This preview shows how white text looks on a background with the CIELCh color 84, 10.084, 14.168.

Color Blindness Simulation

Color vision deficiency is a very complex topic, and I could not describe the different causes any better than Wikipedia does, so if you want to learn more, you should check out their [article about color blindness](#).

Dichromacy



Original Color

84, 10.084, 14.168

Protanopia

84, 1.890, 35.364

Deuteranopia

84, 10.460, 14.417



Tritanopia
84, 14.105, 343.887

Trichromacy



Original Color
84, 10.084, 14.168

Protanomaly
84, 4.775, 19.644

Deuteranomaly
84, 10.460, 14.417

Tritanomaly
84, 12.114, 351.848

Monochromacy



Original Color
84, 10.084, 14.168

Achromatopsia
85, 0.010, 296.813

Achromatomaly
84, 3.697, 11.364

CSS Examples

Text

The CSS property to change the color of the text to CIELCh 84, 10.084, 14.168 is called "color". The color property can be set on classes, ids or directly on the HTML element.

This example shows how text in the color `rgb(230, 203, 205)` looks like.

```
.text, #text, p{  
    color:rgb(230, 203, 205)  
}
```

If you want to add a text shadow in that color use the text-shadow property, you can generate a text shadow directly with our [CSS Text Shadow Generator](#).

Here you see how black text with a 4 pixel rgb(230, 203, 205) colored shadow looks like.

```
.shadow{ text-shadow: 4px 4px 2px rgb(230, 203, 205) }
```

Border

The CSS property to change the border of an element to CIELCh 84, 10.084, 14.168 is called "border". The border property can be set on classes, ids or directly on the HTML element.

This example shows the color as border, it can be applied via the CSS property "border" or "border-color".

```
.border, #border, table{ border:4px solid rgb(230, 203, 205) }
```

If only the border color should be changed use the property `border-color`.

```
.border{ border-color:rgb(230, 203, 205) }
```

If you want to add a box shadow in that color use:

Here you see how a box with a 4 pixel `rgb(230, 203, 205)` colored shadow looks like.

```
.boxshadow{ -moz-box-shadow:4px 4px 4px 4px rgb(230, 203, 205); -webkit-box-shadow:4px 4px 4px 4px rgb(230, 203, 205); box-shadow:4px 4px 4px 4px rgb(230, 203, 205) }
```

Background

The CSS property to change the background color of an element to CIELCh 84, 10.084, 14.168 is called "background". The background property can be set on classes, ids or directly on the HTML element.

```
.background, #background, body{  
background: rgb(230, 203, 205) }
```

If only the background color should be changed can be used:

```
.background{ background-color: rgb(230,  
203, 205) }
```

This example shows the color as background, it is applied via the CSS property "background".

To optimize and compress your CSS code, you can use our [online CSS compressor and optimizer](#) based on csstidy. If you want to create a linear or radial gradient as background or border, check our [CSS Gradient Generator](#).

Hey! You found this booklet interesting? Support Converting Colors with the new Membership Option!

The pro membership hides all ads, plus gives you double the colors in the color bucket, and more awesome pro features!

[Learn more, Memberships starting at \\$2.50/m!](#)

**Follow me
on Twitter!**

@ConvertingColor