

Converting Colors

CIELCh(85, 10.784, 18.699)

Have a look what the booklet for
CIELCh(85, 10.784, 18.699) contains.

CIELCh(85, 10.792, 20.168)	3
<i>Conversions</i>	4
<i>Details</i>	6
<i>Harmonies</i>	11
<i>Previews</i>	20
<i>Color Blindness Simulation</i>	23
<i>CSS Examples</i>	26

Color

CIELCh(85, 10.792, 20.168)

Conversions

Conversions Part 1

Format	Color
Hex	EBCECE
RGB	235, 206, 206
RGB Percent	92%, 81%, 81%
CMY	0.0799, 0.1935, 0.1936
CMYK	0.00, 0.12, 0.12, 0.08
HSL	0°, 42%, 86%
HSV	0°, 12%, 92%
XYZ	67.2200, 66.0070, 67.3612
YIQ	214.6710, 17.2840, 6.1480

Conversions

Conversions Part 2

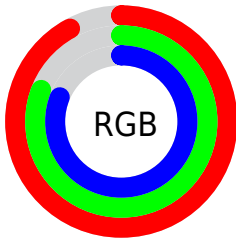
Format	Color
R _Y B	235, 206, 206
Decimal	15453902
CIE Lab	85.00, 10.13, 3.72
CIE LCh	85, 10.792, 20.168
Yxy	66.0070, 0.3351, 0.3291
Android (android.graphics.Color)	4293643982 (0xFFEBCECE)
YUV	214.6710, -4.2748, 17.8285
Hunter-Lab	81.2447, 5.5086, 7.7131

Details

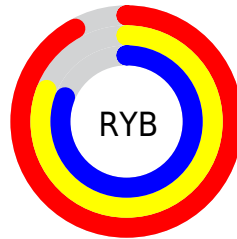
The CIELCh color **85, 10.792, 20.168** is a light color, and the websafe version is hex **FFCCCC**. A complement of this color would be **91, 9.969, 198.809**, and the grayscale version is **86, 0.010, 296.813**.

A 20% lighter version of the original color is **100, 0.012, 296.813**, and **65, 10.678, 20.375** is the 20% darker color. If you saturate the color by 10%, you get **79, 20.308, 21.084**, and if you desaturate by 10%, it is **91, 1.978, 19.244**.

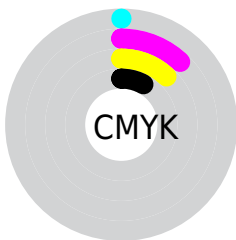
Distribution



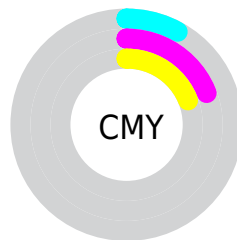
- Red (92%)
- Green (81%)
- Blue (81%)



- Red (92%)
- Yellow (81%)
- Blue (81%)



- Cyan (0%)
- Magenta (12%)
- Yellow (12%)
- Black (8%)



- Cyan (8%)
- Magenta (19%)
- Yellow (19%)


Brightness & Saturation Gradients

These gradients show how the CIELCh color 85, 10.792, 20.168 changes by changing the brightness by 10 percent. The first figure shows a shift by +10% for each color and the second figure -10%.

Similar to the brightness gradients but the following saturation gradients show a change of the CIELCh color 85, 10.792, 20.168 by changing the saturation by 10% instead.

 85, 10.792, 20.168

 85, 10.792, 20.168

 100, 10.792,
20.168

 75, 10.792, 20.168

 65, 10.792, 20.168

 55, 10.792, 20.168

 45, 10.792, 20.168

 35, 10.792, 20.168

 25, 10.792, 20.168

 15, 10.792, 20.168

 5, 10.792, 20.168

 0, 10.792, 20.168

85, 10.792, 20.168

85, 10.792, 20.168

79, 20.308, 21.084

91, 1.978, 19.244

73, 30.527, 22.240

98, 6.166, 199.129

67, 41.370, 23.749

99, 6.975, 199.059

62, 52.668, 25.720

57, 64.134, 28.263

54, 75.365, 31.418

51, 85.756, 34.997

50, 94.060, 38.274

49, 98.190, 40.001

Harmonies

Complementary

The Complementary color scheme is a pair of colors which are on the opposite of each other on the color wheel.



85, 10.792, 20.168



91, 9.969, 198.809

Rectangle

The Rectangle color scheme consists of four colors that form a rectangle on the color wheel.



85, 10.792, 20.168



85, 10.792, 70.168



85, 10.792, 200.168



85, 10.792, 250.168

Sweetspot

The Sweet Spot groups the original color and five complimentary colors.



85, 10.790, 20.179



97, 3.616, 19.477



86, 18.423, 325.106



51, 2.578, 19.553



0, 0.000, 0.000



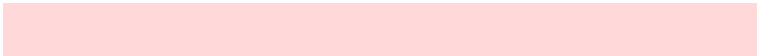
53, 0.007, 296.813

Same Dimension

The Same Dimension uses a secret algorithm to generate beautiful new colors.



85, 10.790, 20.179



90, 14.167, 20.406



89, 9.254, 73.860



46, 4.904, 19.947



38, 80.845, 39.987



7, 28.533, 22.722

Inverse Universe

The Inverse Universe completely reimagines the original color for something new.



91, 9.969, 198.809



97, 12.850, 198.659



87, 8.975, 257.122



48, 4.619, 198.979



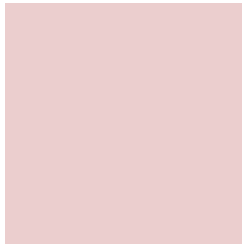
67, 38.745, 196.406



19, 16.592, 196.403

Previews

White Background



This preview shows how the CIELCh color 85, 10.792, 20.168 looks on a white background.

Color Contrast Check

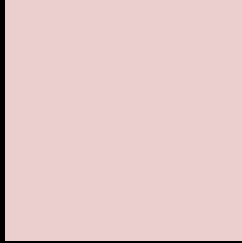
Large Text (above 18pt) WCAG AA × Fail

Any Text WCAG AA × Fail

Large Text (above 18pt) WCAG AAA × Fail

Any Text WCAG AAA × Fail

Black Background



This preview shows how the CIELCh color 85, 10.792, 20.168 looks on a black background.

Color Contrast Check

Large Text (above 18pt) WCAG AA ✓ Pass

Any Text WCAG AA ✓ Pass

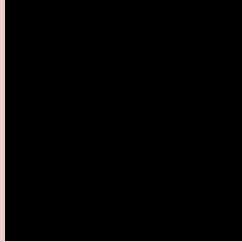
Large Text (above 18pt) WCAG AAA ✓ Pass

Any Text WCAG AAA ✓ Pass

If you want to check with other color combinations, try the [Color Contrast Checker](#).

CIELCh 85, 10.792, 20.168

Background



This preview shows how black text looks on a background with the CIELCh color 85, 10.792, 20.168.

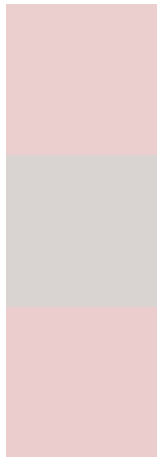


This preview shows how white text looks on a background with the CIELCh color 85, 10.792, 20.168.

Color Blindness Simulation

Color vision deficiency is a very complex topic, and I could not describe the different causes any better than Wikipedia does, so if you want to learn more, you should check out their [article about color blindness](#).

Dichromacy



Original Color

85, 10.792, 20.168

Protanopia

85, 2.416, 45.024

Deuteranopia

85, 11.175, 17.531



Tritanopia
85, 14.075, 346.535

Trichromacy



Original Color
85, 10.792, 20.168

Protanomaly
85, 5.168, 25.487

Deuteranomaly
85, 11.175, 17.531

Tritanomaly
85, 12.328, 357.883

Monochromacy



Original Color
85, 10.792, 20.168

Achromatopsia
86, 0.010, 296.813

Achromatomaly
85, 4.018, 19.559

CSS Examples

Text

The CSS property to change the color of the text to CIELCh 85, 10.792, 20.168 is called "color". The color property can be set on classes, ids or directly on the HTML element.

This example shows how text in the color `rgb(235, 206, 206)` looks like.

```
.text, #text, p{  
    color:rgb(235, 206, 206)  
}
```

If you want to add a text shadow in that color use the text-shadow property, you can generate a text shadow directly with our [CSS Text Shadow Generator](#).

Here you see how black text with a 4 pixel rgb(235, 206, 206) colored shadow looks like.

```
.shadow{ text-shadow: 4px 4px 2px rgb(235, 206, 206) }
```

Border

The CSS property to change the border of an element to CIELCh 85, 10.792, 20.168 is called "border". The border property can be set on classes, ids or directly on the HTML element.

This example shows the color as border, it can be applied via the CSS property "border" or "border-color".

```
.border, #border, table{ border:4px solid rgb(235, 206, 206) }
```

If only the border color should be changed use the property `border-color`.

```
.border{ border-color:rgb(235, 206, 206) }
```

If you want to add a box shadow in that color use:

Here you see how a box with a 4 pixel `rgb(235, 206, 206)` colored shadow looks like.

```
.boxshadow{ -moz-box-shadow:4px 4px 4px  
4px rgb(235, 206, 206); -webkit-box-  
shadow:4px 4px 4px 4px rgb(235, 206, 206);  
box-shadow:4px 4px 4px 4px rgb(235, 206,  
206) }
```

Background

The CSS property to change the background color of an element to CIELCh 85, 10.792, 20.168 is called "background". The background property can be set on classes, ids or directly on the HTML element.

```
.background, #background, body{  
background: rgb(235, 206, 206) }
```

If only the background color should be changed can be used:

```
.background{ background-color: rgb(235,  
206, 206) }
```

This example shows the color as background, it is applied via the CSS property "background".

To optimize and compress your CSS code, you can use our [online CSS compressor and optimizer](#) based on csstidy. If you want to create a linear or radial gradient as background or border, check our [CSS Gradient Generator](#).

Hey! You found this booklet interesting? Support Converting Colors with the new Membership Option!

The pro membership hides all ads, plus gives you double the colors in the color bucket, and more awesome pro features!

[Learn more, Memberships starting at \\$2.50/m!](#)

**Follow me
on Twitter!**

@ConvertingColor