

Converting Colors

CIELCh(85, 11.791, 52.197)

Have a look what the booklet for
CIELCh(85, 11.791, 52.197) contains.

CIELCh(85, 11.709, 52.322)	3
<i>Conversions</i>	4
<i>Details</i>	6
<i>Harmonies</i>	11
<i>Previews</i>	20
<i>Color Blindness Simulation</i>	23
<i>CSS Examples</i>	26

Color

CIELCh(85, 11.709, 52.322)

Conversions

Conversions Part 1

Format	Color
Hex	E9CFC3
RGB	233, 207, 195
RGB Percent	91%, 81%, 76%
CMY	0.0856, 0.1876, 0.2346
CMYK	0.00, 0.11, 0.16, 0.09
HSL	19°, 47%, 84%
HSV	19°, 16%, 91%
XYZ	65.8830, 66.0070, 60.9959
YIQ	213.4060, 19.3480, 1.7800

Conversions

Conversions Part 2

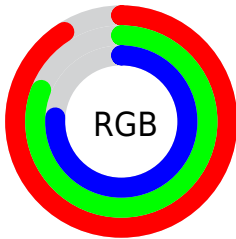
Format	Color
R _Y B	233, 213, 195
Decimal	15323075
CIE Lab	85.00, 7.16, 9.27
CIE LCh	85, 11.709, 52.322
Yxy	66.0070, 0.3416, 0.3422
Android (android.graphics.Color)	4293513155 (0xFFE9CFC3)
YUV	213.4060, -9.0742, 17.1839
Hunter-Lab	81.2447, 2.5710, 12.3583

Details

The CIELCh color **85, 11.709, 52.322** is a light color, and the websafe version is hex **FFCCCC**. A complement of this color would be **87, 10.710, 235.042**, and the grayscale version is **86, 0.010, 296.813**.

A 20% lighter version of the original color is **100, 1.510, 110.014**, and **65, 11.817, 54.122** is the 20% darker color. If you saturate the color by 10%, you get **81, 19.622, 51.723**, and if you desaturate by 10%, it is **90, 4.359, 52.948**.

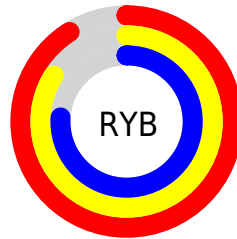
Distribution



Red (91%)

Green (81%)

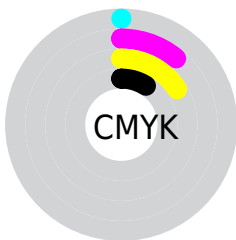
Blue (76%)



Red (91%)

Yellow (84%)

Blue (76%)

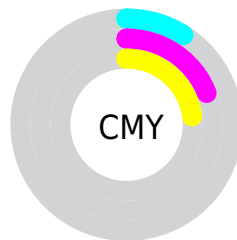


Cyan (0%)

Magenta (11%)

Yellow (16%)

Black (9%)



Cyan (9%)

Magenta (19%)

Yellow (23%)


Brightness & Saturation Gradients

These gradients show how the CIELCh color 85, 11.709, 52.322 changes by changing the brightness by 10 percent. The first figure shows a shift by +10% for each color and the second figure -10%.

Similar to the brightness gradients but the following saturation gradients show a change of the CIELCh color 85, 11.709, 52.322 by changing the saturation by 10% instead.

 85, 11.709, 52.322

 85, 11.709, 52.322

 100, 11.709,
52.322

 75, 11.709, 52.322

 65, 11.709, 52.322

 55, 11.709, 52.322

 45, 11.709, 52.322

 35, 11.709, 52.322

 25, 11.709, 52.322

 15, 11.709, 52.322

 5, 11.709, 52.322

 0, 11.709, 52.322

85, 11.709, 52.322

85, 11.709, 52.322

81, 19.622, 51.723

90, 4.359, 52.948

76, 28.146, 51.182

94, 2.480, 234.034

72, 37.303, 50.737

98, 7.463, 199.022

68, 47.070, 50.400

64, 57.329, 50.154

61, 67.764, 49.910

58, 77.646, 49.428

55, 85.574, 48.205

54, 88.089, 47.705

Harmonies

Complementary

The Complementary color scheme is a pair of colors which are on the opposite of each other on the color wheel.



85, 11.709, 52.322



87, 10.710, 235.042

Rectangle

The Rectangle color scheme consists of four colors that form a rectangle on the color wheel.



85, 11.709, 52.322



85, 11.709, 102.322



85, 11.709, 232.322



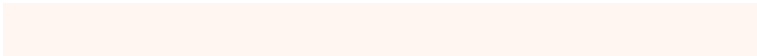
85, 11.709, 282.322

Sweetspot

The Sweet Spot groups the original color and five complimentary colors.



85, 11.709, 52.336



98, 3.702, 53.006



83, 19.660, 335.408



52, 2.533, 52.975



0, 0.000, 0.000



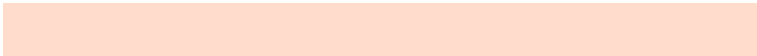
53, 0.007, 296.813

Same Dimension

The Same Dimension uses a secret algorithm to generate beautiful new colors.



85, 11.709, 52.336



90, 15.671, 52.097



90, 15.980, 98.517



47, 3.998, 52.767



42, 72.447, 48.264



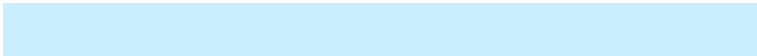
10, 23.367, 42.773

Inverse Universe

The Inverse Universe completely reimagines the original color for something new.



87, 10.710, 235.042



92, 14.006, 235.461



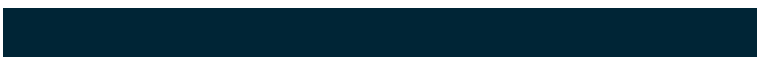
82, 16.271, 282.483



47, 3.806, 234.398



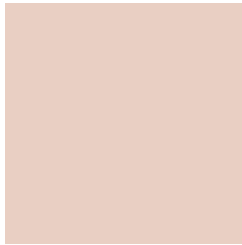
49, 38.834, 258.943



13, 15.509, 250.184

Previews

White Background



This preview shows how the CIELCh color 85, 11.709, 52.322 looks on a white background.

Color Contrast Check

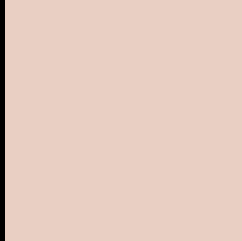
Large Text (above 18pt) WCAG AA × Fail

Any Text WCAG AA × Fail

Large Text (above 18pt) WCAG AAA × Fail

Any Text WCAG AAA × Fail

Black Background



This preview shows how the CIELCh color 85, 11.709, 52.322 looks on a black background.

Color Contrast Check

Large Text (above 18pt) WCAG AA ✓ Pass

Any Text WCAG AA ✓ Pass

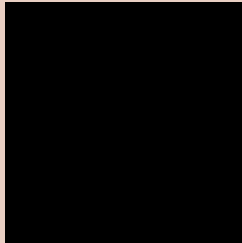
Large Text (above 18pt) WCAG AAA ✓ Pass

Any Text WCAG AAA ✓ Pass

If you want to check with other color combinations, try the [Color Contrast Checker](#).

CIELCh 85, 11.709, 52.322

Background



This preview shows how black text looks on a background with the CIELCh color 85, 11.709, 52.322.

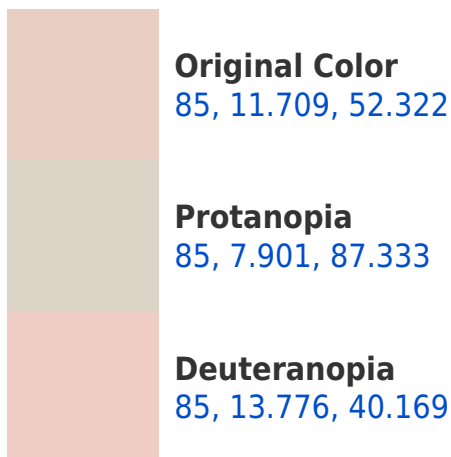


This preview shows how white text looks on a background with the CIELCh color 85, 11.709, 52.322.

Color Blindness Simulation

Color vision deficiency is a very complex topic, and I could not describe the different causes any better than Wikipedia does, so if you want to learn more, you should check out their [article about color blindness](#).

Dichromacy





Tritanopia
85, 14.075, 346.535

Trichromacy



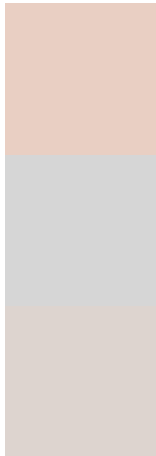
Original Color
85, 11.709, 52.322

Protanomaly
85, 8.829, 69.949

Deuteranomaly
85, 12.899, 43.998

Tritanomaly
85, 11.392, 6.982

Monochromacy



Original Color
85, 11.709, 52.322

Achromatopsia
86, 0.010, 296.813

Achromatomaly
85, 4.201, 57.971

CSS Examples

Text

The CSS property to change the color of the text to CIELCh 85, 11.709, 52.322 is called "color". The color property can be set on classes, ids or directly on the HTML element.

This example shows how text in the color `rgb(233, 207, 195)` looks like.

```
.text, #text, p{  
    color:rgb(233, 207, 195)  
}
```

If you want to add a text shadow in that color use the text-shadow property, you can generate a text shadow directly with our [CSS Text Shadow Generator](#).

Here you see how black text with a 4 pixel rgb(233, 207, 195) colored shadow looks like.

```
.shadow{ text-shadow: 4px 4px 2px rgb(233, 207, 195) }
```

Border

The CSS property to change the border of an element to CIELCh 85, 11.709, 52.322 is called "border". The border property can be set on classes, ids or directly on the HTML element.

This example shows the color as border, it can be applied via the CSS property "border" or "border-color".

```
.border, #border, table{ border:4px solid rgb(233, 207, 195) }
```

If only the border color should be changed use the property `border-color`.

```
.border{ border-color:rgb(233, 207, 195) }
```

If you want to add a box shadow in that color use:

Here you see how a box with a 4 pixel `rgb(233, 207, 195)` colored shadow looks like.

```
.boxshadow{ -moz-box-shadow:4px 4px 4px  
4px rgb(233, 207, 195); -webkit-box-  
shadow:4px 4px 4px 4px rgb(233, 207, 195);  
box-shadow:4px 4px 4px 4px rgb(233, 207,  
195) }
```

Background

The CSS property to change the background color of an element to CIELCh 85, 11.709, 52.322 is called "background". The background property can be set on classes, ids or directly on the HTML element.

```
.background, #background, body{  
background: rgb(233, 207, 195) }
```

If only the background color should be changed can be used:

```
.background{ background-color: rgb(233,  
207, 195) }
```

This example shows the color as background, it is applied via the CSS property "background".

To optimize and compress your CSS code, you can use our [online CSS compressor and optimizer](#) based on csstidy. If you want to create a linear or radial gradient as background or border, check our [CSS Gradient Generator](#).

Hey! You found this booklet interesting? Support Converting Colors with the new Membership Option!

The pro membership hides all ads, plus gives you double the colors in the color bucket, and more awesome pro features!

[Learn more, Memberships starting at \\$2.50/m!](#)

**Follow me
on Twitter!**

@ConvertingColor