

Converting Colors

CIELCh(85, 11.943, 43.235)

Have a look what the booklet for
CIELCh(85, 11.943, 43.235) contains.

CIELCh(85, 11.956, 43.234)	3
<i>Conversions</i>	4
<i>Details</i>	6
<i>Harmonies</i>	11
<i>Previews</i>	20
<i>Color Blindness Simulation</i>	23
<i>CSS Examples</i>	26

Color

CIELCh(85, 11.956, 43.234)

Conversions

Conversions Part 1

Format	Color
Hex	EBCEC5
RGB	235, 206, 197
RGB Percent	92%, 81%, 77%
CMY	0.0774, 0.1912, 0.2265
CMYK	0.00, 0.12, 0.16, 0.08
HSL	14°, 49%, 85%
HSV	14°, 16%, 92%
XYZ	66.5795, 66.0070, 62.1997
YIQ	213.6450, 20.1730, 3.3490

Conversions

Conversions Part 2

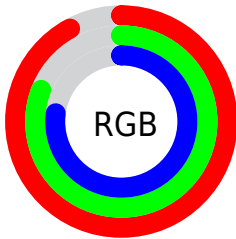
Format	Color
R _Y B	235, 209, 197
Decimal	15453893
CIE Lab	85.00, 8.71, 8.19
CIE LCh	85, 11.956, 43.234
Yxy	66.0070, 0.3418, 0.3389
Android (android.graphics.Color)	4293643973 (0xFFEBCEC5)
YUV	213.6450, -8.2060, 18.7283
Hunter-Lab	81.2447, 4.1012, 11.4797

Details

The CIELCh color **85, 11.956, 43.234** is a light color, and the websafe version is hex **FFCCCC**. A complement of this color would be **88, 10.803, 224.742**, and the grayscale version is **86, 0.010, 296.813**.

A 20% lighter version of the original color is **100, 0.496, 109.985**, and **65, 12.027, 44.613** is the 20% darker color. If you saturate the color by 10%, you get **80, 20.168, 43.052**, and if you desaturate by 10%, it is **90, 4.374, 43.476**.

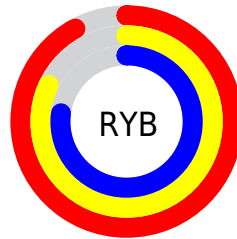
Distribution



Red (92%)

Green (81%)

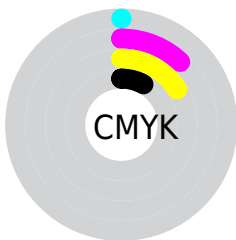
Blue (77%)



Red (92%)

Yellow (82%)

Blue (77%)

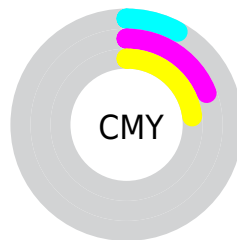


Cyan (0%)

Magenta (12%)

Yellow (16%)

Black (8%)



Cyan (8%)

Magenta (19%)

Yellow (23%)


Brightness & Saturation Gradients

These gradients show how the CIELCh color 85, 11.956, 43.234 changes by changing the brightness by 10 percent. The first figure shows a shift by +10% for each color and the second figure -10%.

Similar to the brightness gradients but the following saturation gradients show a change of the CIELCh color 85, 11.956, 43.234 by changing the saturation by 10% instead.

 85, 11.956, 43.234

 85, 11.956, 43.234

 100, 11.956,
43.234

 75, 11.956, 43.234

 65, 11.956, 43.234

 55, 11.956, 43.234

 45, 11.956, 43.234

 35, 11.956, 43.234

 25, 11.956, 43.234

 15, 11.956, 43.234

 5, 11.956, 43.234

 0, 11.956, 43.234

85, 11.956, 43.234

85, 11.956, 43.234

80, 20.168, 43.052

90, 4.374, 43.476

75, 29.061, 42.977

95, 2.632, 224.232

71, 38.652, 43.060

99, 6.766, 199.075

66, 48.911, 43.329

62, 59.711, 43.783

59, 70.732, 44.351

56, 81.226, 44.784

53, 89.650, 44.499

52, 92.338, 44.331

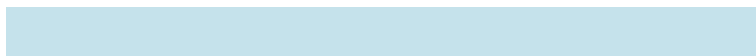
Harmonies

Complementary

The Complementary color scheme is a pair of colors which are on the opposite of each other on the color wheel.



85, 11.956, 43.234



88, 10.803, 224.742

Rectangle

The Rectangle color scheme consists of four colors that form a rectangle on the color wheel.



85, 11.956, 43.234



85, 11.956, 93.234



85, 11.956, 223.234



85, 11.956, 273.234

Sweetspot

The Sweet Spot groups the original color and five complimentary colors.



85, 11.955, 43.247



97, 3.775, 43.485



84, 20.573, 332.759



52, 2.583, 43.481



0, 0.000, 0.000



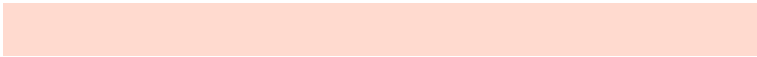
53, 0.007, 296.813

Same Dimension

The Same Dimension uses a secret algorithm to generate beautiful new colors.



85, 11.955, 43.247



90, 15.190, 43.180



90, 14.915, 94.122



46, 4.082, 43.411



40, 75.441, 44.794



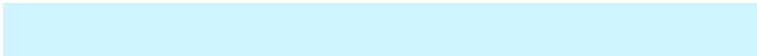
9, 24.402, 36.646

Inverse Universe

The Inverse Universe completely reimagines the original color for something new.



88, 10.803, 224.742



94, 13.450, 224.938



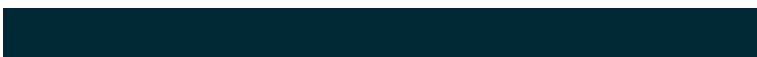
83, 15.041, 278.261



48, 3.856, 224.376



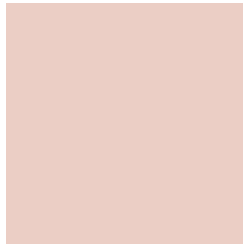
54, 34.892, 243.445



15, 14.563, 236.009

Previews

White Background



This preview shows how the CIELCh color 85, 11.956, 43.234 looks on a white background.

Color Contrast Check

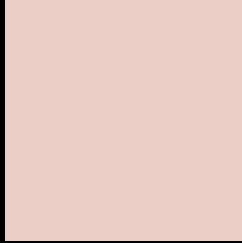
Large Text (above 18pt) WCAG AA × Fail

Any Text WCAG AA × Fail

Large Text (above 18pt) WCAG AAA × Fail

Any Text WCAG AAA × Fail

Black Background



This preview shows how the CIELCh color 85, 11.956, 43.234 looks on a black background.

Color Contrast Check

Large Text (above 18pt) WCAG AA ✓ Pass

Any Text WCAG AA ✓ Pass

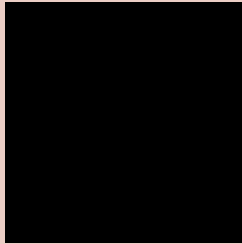
Large Text (above 18pt) WCAG AAA ✓ Pass

Any Text WCAG AAA ✓ Pass

If you want to check with other color combinations, try the [Color Contrast Checker](#).

CIELCh 85, 11.956, 43.234

Background



This preview shows how black text looks on a background with the CIELCh color 85, 11.956, 43.234.

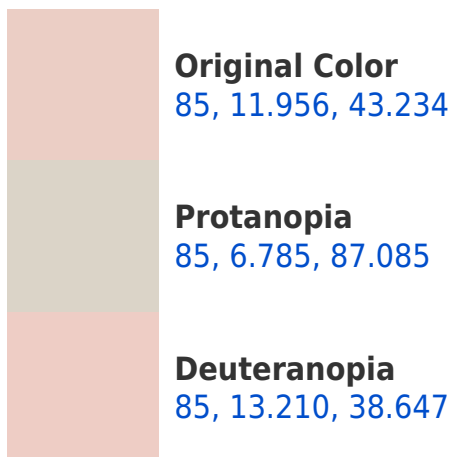



This preview shows how white text looks on a background with the CIELCh color 85, 11.956, 43.234.

Color Blindness Simulation

Color vision deficiency is a very complex topic, and I could not describe the different causes any better than Wikipedia does, so if you want to learn more, you should check out their [article about color blindness](#).

Dichromacy





Tritanopia
85, 15.280, 347.319

Trichromacy



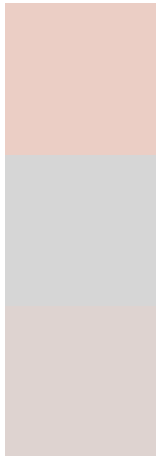
Original Color
85, 11.956, 43.234

Protanomaly
85, 8.033, 65.356

Deuteranomaly
85, 12.843, 39.171

Tritanomaly
85, 12.726, 3.654

Monochromacy



Original Color
85, 11.956, 43.234

Achromatopsia
86, 0.010, 296.813

Achromatomaly
85, 4.322, 40.844

CSS Examples

Text

The CSS property to change the color of the text to CIELCh 85, 11.956, 43.234 is called "color". The color property can be set on classes, ids or directly on the HTML element.

This example shows how text in the color `rgb(235, 206, 197)` looks like.

```
.text, #text, p{  
    color:rgb(235, 206, 197)  
}
```

If you want to add a text shadow in that color use the text-shadow property, you can generate a text shadow directly with our [CSS Text Shadow Generator](#).

Here you see how black text with a 4 pixel rgb(235, 206, 197) colored shadow looks like.

```
.shadow{ text-shadow: 4px 4px 2px rgb(235, 206, 197) }
```

Border

The CSS property to change the border of an element to CIELCh 85, 11.956, 43.234 is called "border". The border property can be set on classes, ids or directly on the HTML element.

This example shows the color as border, it can be applied via the CSS property "border" or "border-color".

```
.border, #border, table{ border:4px solid rgb(235, 206, 197) }
```

If only the border color should be changed use the property `border-color`.

```
.border{ border-color:rgb(235, 206, 197) }
```

If you want to add a box shadow in that color use:

Here you see how a box with a 4 pixel `rgb(235, 206, 197)` colored shadow looks like.

```
.boxshadow{ -moz-box-shadow:4px 4px 4px  
4px rgb(235, 206, 197); -webkit-box-  
shadow:4px 4px 4px 4px rgb(235, 206, 197);  
box-shadow:4px 4px 4px 4px rgb(235, 206,  
197) }
```

Background

The CSS property to change the background color of an element to CIELCh 85, 11.956, 43.234 is called "background". The background property can be set on classes, ids or directly on the HTML element.

```
.background, #background, body{  
background: rgb(235, 206, 197) }
```

If only the background color should be changed can be used:

```
.background{ background-color: rgb(235,  
206, 197) }
```

This example shows the color as background, it is applied via the CSS property "background".

To optimize and compress your CSS code, you can use our [online CSS compressor and optimizer](#) based on csstidy. If you want to create a linear or radial gradient as background or border, check our [CSS Gradient Generator](#).

Hey! You found this booklet interesting? Support Converting Colors with the new Membership Option!

The pro membership hides all ads, plus gives you double the colors in the color bucket, and more awesome pro features!

[Learn more, Memberships starting at \\$2.50/m!](#)

**Follow me
on Twitter!**

@ConvertingColor