

Converting Colors

CIELCh(85, 14.745, 47.608)

Have a look what the booklet for
CIELCh(85, 14.745, 47.608) contains.

CIELCh(85, 14.729, 47.611)	3
<i>Conversions</i>	4
<i>Details</i>	6
<i>Harmonies</i>	11
<i>Previews</i>	20
<i>Color Blindness Simulation</i>	23
<i>CSS Examples</i>	26

Color

CIELCh(85, 14.729, 47.611)

Conversions

Conversions Part 1

Format	Color
Hex	EFCDC0
RGB	239, 205, 192
RGB Percent	94%, 80%, 75%
CMY	0.0617, 0.1950, 0.2460
CMYK	0.00, 0.14, 0.20, 0.06
HSL	17°, 60%, 85%
HSV	17°, 20%, 94%
XYZ	67.1293, 66.0070, 59.2249
YIQ	213.6840, 24.4370, 3.1650

Conversions

Conversions Part 2

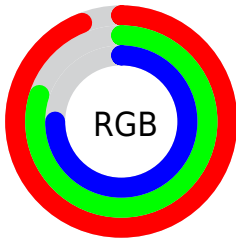
Format	Color
R _Y B	239, 210, 192
Decimal	15715776
CIE Lab	85.00, 9.93, 10.88
CIE LCh	85, 14.729, 47.611
Yxy	66.0070, 0.3490, 0.3431
Android (android.graphics.Color)	4293905856 (0xFFEFCDC0)
YUV	213.6840, -10.6902, 22.2021
Hunter-Lab	81.2447, 5.3092, 13.6507

Details

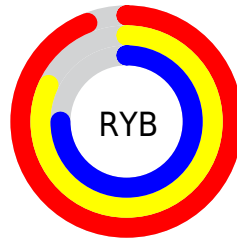
The CIELCh color **85, 14.729, 47.611** is a light color, and the websafe version is hex **FFCCCC**. A complement of this color would be **88, 13.080, 230.203**, and the grayscale version is **86, 0.010, 296.813**.

A 20% lighter version of the original color is **100, 3.539, 109.892**, and **65, 14.747, 47.018** is the 20% darker color. If you saturate the color by 10%, you get **80, 23.134, 47.239**, and if you desaturate by 10%, it is **90, 6.953, 48.064**.

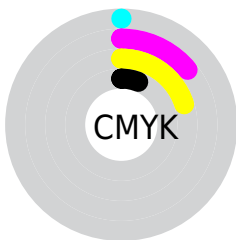
Distribution



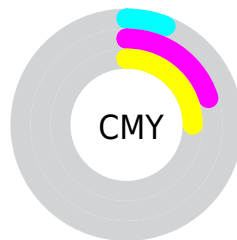
- Red (94%)
- Green (80%)
- Blue (75%)



- Red (94%)
- Yellow (82%)
- Blue (75%)



- Cyan (0%)
- Magenta (14%)
- Yellow (20%)
- Black (6%)



- Cyan (6%)
- Magenta (20%)
- Yellow (25%)


Brightness & Saturation Gradients

These gradients show how the CIELCh color 85, 14.729, 47.611 changes by changing the brightness by 10 percent. The first figure shows a shift by +10% for each color and the second figure -10%.

Similar to the brightness gradients but the following saturation gradients show a change of the CIELCh color 85, 14.729, 47.611 by changing the saturation by 10% instead.

 85, 14.729, 47.611

 85, 14.729, 47.611

 100, 14.729,
47.611

 75, 14.729, 47.611

 65, 14.729, 47.611

 55, 14.729, 47.611

 45, 14.729, 47.611

 35, 14.729, 47.611

 25, 14.729, 47.611

 15, 14.729, 47.611

 5, 14.729, 47.611

 0, 14.729, 47.611

85, 14.729, 47.611

85, 14.729, 47.611

80, 23.134, 47.239

90, 6.953, 48.064

76, 32.210, 46.964

95, 0.249, 231.076

71, 41.970, 46.824

99, 5.407, 199.185

67, 52.360, 46.830

63, 63.207, 46.955

60, 74.073, 47.076

57, 83.973, 46.853

54, 91.512, 45.874

54, 91.763, 45.851

Harmonies

Complementary

The Complementary color scheme is a pair of colors which are on the opposite of each other on the color wheel.



85, 14.729, 47.611



88, 13.080, 230.203

Rectangle

The Rectangle color scheme consists of four colors that form a rectangle on the color wheel.



85, 14.729, 47.611



85, 14.729, 97.611



85, 14.729, 227.611



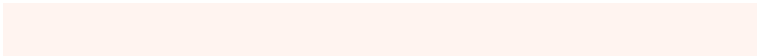
85, 14.729, 277.611

Sweetspot

The Sweet Spot groups the original color and five complimentary colors.



85, 14.728, 47.622



97, 4.488, 48.204



83, 24.813, 334.299



51, 2.985, 48.183



0, 0.000, 0.000



53, 0.007, 296.813

Same Dimension

The Same Dimension uses a secret algorithm to generate beautiful new colors.



85, 14.728, 47.622



88, 19.282, 47.441



91, 19.050, 95.978



48, 4.098, 48.071



42, 74.772, 46.371



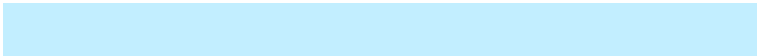
11, 25.129, 40.319

Inverse Universe

The Inverse Universe completely reimagines the original color for something new.



88, 13.080, 230.203



92, 16.617, 230.649



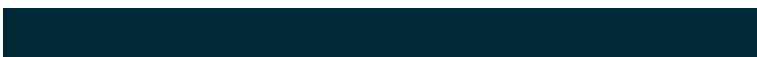
82, 19.362, 280.969



48, 3.884, 229.386



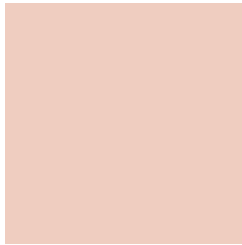
52, 36.953, 251.618



15, 15.414, 243.770

Previews

White Background



This preview shows how the CIELCh color 85, 14.729, 47.611 looks on a white background.

Color Contrast Check

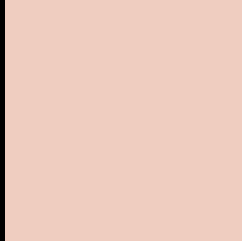
Large Text (above 18pt) WCAG AA × Fail

Any Text WCAG AA × Fail

Large Text (above 18pt) WCAG AAA × Fail

Any Text WCAG AAA × Fail

Black Background



This preview shows how the CIELCh color 85, 14.729, 47.611 looks on a black background.

Color Contrast Check

Large Text (above 18pt) WCAG AA ✓ Pass

Any Text WCAG AA ✓ Pass

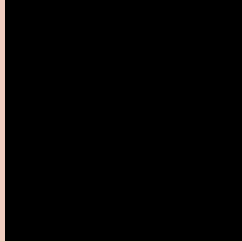
Large Text (above 18pt) WCAG AAA ✓ Pass

Any Text WCAG AAA ✓ Pass

If you want to check with other color combinations, try the [Color Contrast Checker](#).

CIELCh 85, 14.729, 47.611

Background



This preview shows how black text looks on a background with the CIELCh color 85, 14.729, 47.611.

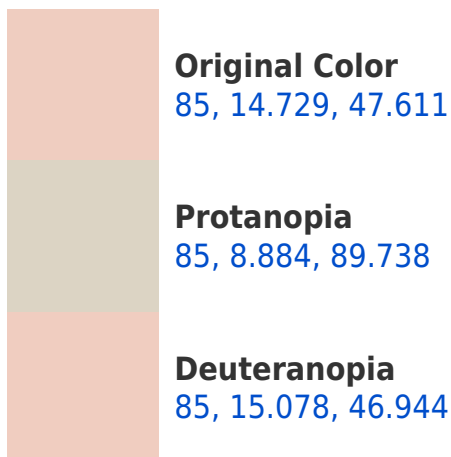


This preview shows how white text looks on a background with the CIELCh color 85, 14.729, 47.611.

Color Blindness Simulation

Color vision deficiency is a very complex topic, and I could not describe the different causes any better than Wikipedia does, so if you want to learn more, you should check out their [article about color blindness](#).

Dichromacy





Tritanopia
85, 16.627, 352.555

Trichromacy



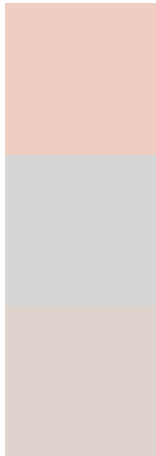
Original Color
85, 14.729, 47.611

Protanomaly
85, 10.141, 70.254

Deuteranomaly
85, 15.078, 46.944

Tritanomaly
85, 14.373, 10.040

Monochromacy



Original Color
85, 14.729, 47.611

Achromatopsia
86, 0.010, 296.813

Achromatomaly
85, 5.127, 50.243

CSS Examples

Text

The CSS property to change the color of the text to CIELCh 85, 14.729, 47.611 is called "color". The color property can be set on classes, ids or directly on the HTML element.

This example shows how text in the color `rgb(239, 205, 192)` looks like.

```
.text, #text, p{  
    color:rgb(239, 205, 192)  
}
```

If you want to add a text shadow in that color use the text-shadow property, you can generate a text shadow directly with our [CSS Text Shadow Generator](#).

Here you see how black text with a 4 pixel rgb(239, 205, 192) colored shadow looks like.

```
.shadow{ text-shadow: 4px 4px 2px rgb(239, 205, 192) }
```

Border

The CSS property to change the border of an element to CIELCh 85, 14.729, 47.611 is called "border". The border property can be set on classes, ids or directly on the HTML element.

This example shows the color as border, it can be applied via the CSS property "border" or "border-color".

```
.border, #border, table{ border:4px solid rgb(239, 205, 192) }
```

If only the border color should be changed use the property border-color.

```
.border{ border-color:rgb(239, 205, 192) }
```

If you want to add a box shadow in that color use:

Here you see how a box with a 4 pixel rgb(239, 205, 192) colored shadow looks like.

```
.boxshadow{ -moz-box-shadow:4px 4px 4px  
4px rgb(239, 205, 192); -webkit-box-  
shadow:4px 4px 4px 4px rgb(239, 205, 192);  
box-shadow:4px 4px 4px 4px rgb(239, 205,  
192) }
```

Background

The CSS property to change the background color of an element to CIELCh 85, 14.729, 47.611 is called "background". The background property can be set on classes, ids or directly on the HTML element.

```
.background, #background, body{  
background: rgb(239, 205, 192) }
```

If only the background color should be changed can be used:

```
.background{ background-color: rgb(239,  
205, 192) }
```

This example shows the color as background, it is applied via the CSS property "background".

To optimize and compress your CSS code, you can use our [online CSS compressor and optimizer](#) based on csstidy. If you want to create a linear or radial gradient as background or border, check our [CSS Gradient Generator](#).

Hey! You found this booklet interesting? Support Converting Colors with the new Membership Option!

The pro membership hides all ads, plus gives you double the colors in the color bucket, and more awesome pro features!

[Learn more, Memberships starting at \\$2.50/m!](#)

**Follow me
on Twitter!**

@ConvertingColor