

Converting Colors

CIELCh(85, 15.082, 63.693)

Have a look what the booklet for
CIELCh(85, 15.082, 63.693) contains.

CIELCh(85, 15.082, 63.693)	3
<i>Conversions</i>	4
<i>Details</i>	6
<i>Harmonies</i>	11
<i>Previews</i>	20
<i>Color Blindness Simulation</i>	23
<i>CSS Examples</i>	26

Color

CIELCh(85, 15.082, 63.693)

Conversions

Conversions Part 1

Format	Color
Hex	EBCFBB
RGB	235, 207, 187
RGB Percent	92%, 81%, 73%
CMY	0.0777, 0.1875, 0.2659
CMYK	0.00, 0.12, 0.20, 0.08
HSL	25°, 55%, 83%
HSV	25°, 20%, 92%
XYZ	65.6720, 66.0070, 56.3965
YIQ	213.0920, 23.1080, -0.2840

Conversions

Conversions Part 2

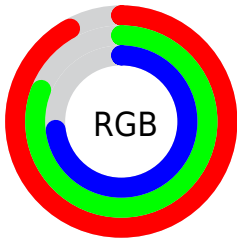
Format	Color
R _{YB}	235, 221, 187
Decimal	15454139
CIE Lab	85.00, 6.68, 13.52
CIE LCh	85, 15.082, 63.693
Yxy	66.0070, 0.3492, 0.3510
Android (android.graphics.Color)	4293644219 (0xFFEBCFBB)
YUV	213.0920, -12.8634, 19.2133
Hunter-Lab	81.2447, 2.1075, 15.7148

Details

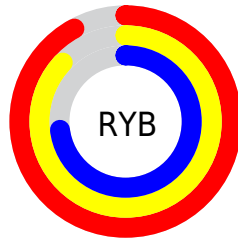
The CIELCh color **85, 15.082, 63.693** is a light color, and the websafe version is hex **FFCCCC**. A complement of this color would be **85, 13.879, 248.592**, and the grayscale version is **85, 0.010, 296.813**.

A 20% lighter version of the original color is **100, 6.073, 109.711**, and **65, 15.097, 63.872** is the 20% darker color. If you saturate the color by 10%, you get **81, 23.182, 62.671**, and if you desaturate by 10%, it is **89, 7.461, 64.733**.

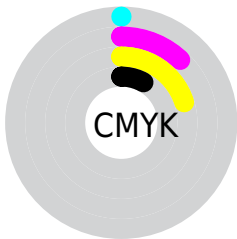
Distribution



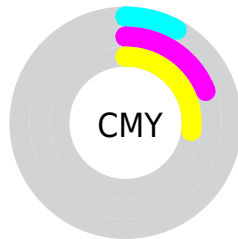
- Red (92%)
- Green (81%)
- Blue (73%)



- Red (92%)
- Yellow (87%)
- Blue (73%)



- Cyan (0%)
- Magenta (12%)
- Yellow (20%)
- Black (8%)



- Cyan (8%)
- Magenta (19%)
- Yellow (27%)


Brightness & Saturation Gradients

These gradients show how the CIELCh color 85, 15.082, 63.693 changes by changing the brightness by 10 percent. The first figure shows a shift by +10% for each color and the second figure -10%.

Similar to the brightness gradients but the following saturation gradients show a change of the CIELCh color 85, 15.082, 63.693 by changing the saturation by 10% instead.

 85, 15.082, 63.693

 85, 15.082, 63.693

 100, 15.082,
63.693

 75, 15.082, 63.693

 65, 15.082, 63.693

 55, 15.082, 63.693

 45, 15.082, 63.693

 35, 15.082, 63.693

 25, 15.082, 63.693

 15, 15.082, 63.693

 5, 15.082, 63.693

 0, 15.082, 63.693

85, 15.082, 63.693

85, 15.082, 63.693

81, 23.182, 62.671

89, 7.461, 64.733

77, 31.789, 61.660

93, 0.280, 64.126

74, 40.895, 60.680

97, 5.594, 236.819

70, 50.429, 59.718

99, 6.786, 199.073

67, 60.180, 58.722

64, 69.665, 57.552

61, 77.923, 55.904

58, 83.837, 53.659

Harmonies

Complementary

The Complementary color scheme is a pair of colors which are on the opposite of each other on the color wheel.



85, 15.082, 63.693



85, 13.879, 248.592

Rectangle

The Rectangle color scheme consists of four colors that form a rectangle on the color wheel.



85, 15.082, 63.693



85, 15.082, 113.693



85, 15.082, 243.693



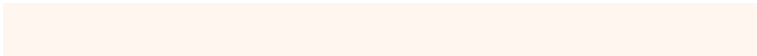
85, 15.082, 293.693

Sweetspot

The Sweet Spot groups the original color and five complimentary colors.



85, 15.082, 63.704



97, 4.529, 65.153



81, 22.924, 341.057



52, 3.011, 65.094



0, 0.000, 0.000



53, 0.007, 296.813

Same Dimension

The Same Dimension uses a secret algorithm to generate beautiful new colors.



85, 15.082, 63.704



90, 19.153, 63.321



91, 22.674, 104.463



47, 4.051, 64.828



46, 68.559, 54.329



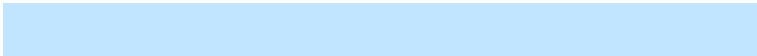
12, 22.435, 52.208

Inverse Universe

The Inverse Universe completely reimagines the original color for something new.



85, 13.879, 248.592



89, 17.329, 249.187



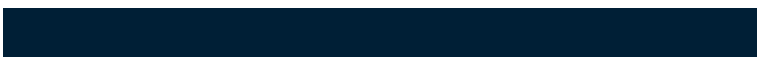
78, 23.574, 289.063



47, 3.911, 247.084



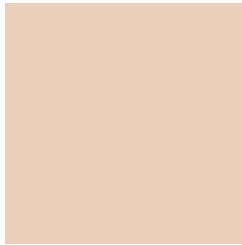
44, 47.078, 274.520



11, 17.869, 265.701

Previews

White Background



This preview shows how the CIE LCh color 85, 15.082, 63.693 looks on a white background.

Color Contrast Check

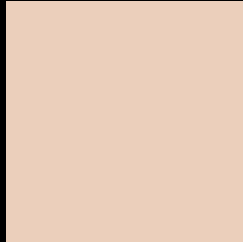
Large Text (above 18pt) WCAG AA × Fail

Any Text WCAG AA × Fail

Large Text (above 18pt) WCAG AAA × Fail

Any Text WCAG AAA × Fail

Black Background



This preview shows how the CIELCh color 85, 15.082, 63.693 looks on a black background.

Color Contrast Check

Large Text (above 18pt) WCAG AA ✓ Pass

Any Text WCAG AA ✓ Pass

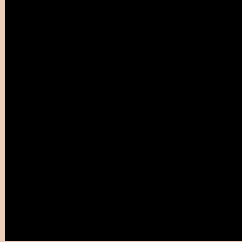
Large Text (above 18pt) WCAG AAA ✓ Pass

Any Text WCAG AAA ✓ Pass

If you want to check with other color combinations, try the [Color Contrast Checker](#).

CIELCh 85, 15.082, 63.693

Background



This preview shows how black text looks on a background with the CIELCh color 85, 15.082, 63.693.



This preview shows how white text looks on a background with the CIELCh color 85, 15.082, 63.693.

Color Blindness Simulation

Color vision deficiency is a very complex topic, and I could not describe the different causes any better than Wikipedia does, so if you want to learn more, you should check out their [article about color blindness](#).

Dichromacy



Original Color

85, 15.082, 63.693

Protanopia

85, 12.114, 90.947

Deuteranopia

85, 16.905, 51.834



Tritanopia
85, 15.328, 349.775

Trichromacy



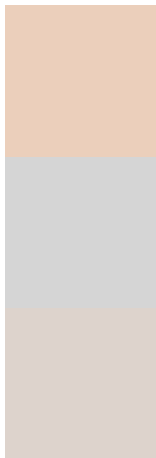
Original Color
85, 15.082, 63.693

Protanomaly
85, 12.774, 78.734

Deuteranomaly
85, 16.213, 55.478

Tritanomaly
85, 12.325, 15.453

Monochromacy



Original Color
85, 15.082, 63.693

Achromatopsia
85, 0.010, 296.813

Achromatomaly
85, 5.188, 64.415

CSS Examples

Text

The CSS property to change the color of the text to CIELCh 85, 15.082, 63.693 is called "color". The color property can be set on classes, ids or directly on the HTML element.

This example shows how text in the color `rgb(235, 207, 187)` looks like.

```
.text, #text, p{  
    color:rgb(235, 207, 187)  
}
```

If you want to add a text shadow in that color use the text-shadow property, you can generate a text shadow directly with our [CSS Text Shadow Generator](#).

Here you see how black text with a 4 pixel rgb(235, 207, 187) colored shadow looks like.

```
.shadow{ text-shadow: 4px 4px 2px rgb(235, 207, 187) }
```

Border

The CSS property to change the border of an element to CIELCh 85, 15.082, 63.693 is called "border". The border property can be set on classes, ids or directly on the HTML element.

This example shows the color as border, it can be applied via the CSS property "border" or "border-color".

```
.border, #border, table{ border:4px solid rgb(235, 207, 187) }
```

If only the border color should be changed use the property `border-color`.

```
.border{ border-color:rgb(235, 207, 187) }
```

If you want to add a box shadow in that color use:

Here you see how a box with a 4 pixel `rgb(235, 207, 187)` colored shadow looks like.

```
.boxshadow{ -moz-box-shadow:4px 4px 4px  
4px rgb(235, 207, 187); -webkit-box-  
shadow:4px 4px 4px 4px rgb(235, 207, 187);  
box-shadow:4px 4px 4px 4px rgb(235, 207,  
187) }
```

Background

The CSS property to change the background color of an element to CIELCh 85, 15.082, 63.693 is called "background". The background property can be set on classes, ids or directly on the HTML element.

```
.background, #background, body{  
background: rgb(235, 207, 187) }
```

If only the background color should be changed can be used:

```
.background{ background-color: rgb(235,  
207, 187) }
```

This example shows the color as background, it is applied via the CSS property "background".

To optimize and compress your CSS code, you can use our [online CSS compressor and optimizer](#) based on csstidy. If you want to create a linear or radial gradient as background or border, check our [CSS Gradient Generator](#).

Hey! You found this booklet interesting? Support Converting Colors with the new Membership Option!

The pro membership hides all ads, plus gives you double the colors in the color bucket, and more awesome pro features!

[Learn more, Memberships starting at \\$2.50/m!](#)

**Follow me
on Twitter!**

@ConvertingColor