

Converting Colors

CIELCh(85, 15.696, 47.951)

Have a look what the booklet for
CIELCh(85, 15.696, 47.951) contains.

CIELCh(85, 15.696, 47.951)	3
<i>Conversions</i>	4
<i>Details</i>	6
<i>Harmonies</i>	11
<i>Previews</i>	20
<i>Color Blindness Simulation</i>	23
<i>CSS Examples</i>	26

Color

CIELCh(85, 15.696, 47.951)

Conversions

Conversions Part 1

Format	Color
Hex	F1CDBF
RGB	241, 205, 191
RGB Percent	95%, 80%, 75%
CMY	0.0556, 0.1967, 0.2516
CMYK	0.00, 0.15, 0.21, 0.06
HSL	17°, 64%, 85%
HSV	17°, 21%, 94%
XYZ	67.3933, 66.0070, 58.3835
YIQ	214.1680, 25.9500, 3.2780

Conversions

Conversions Part 2

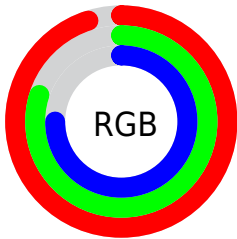
Format	Color
R _Y B	241, 210, 191
Decimal	15846847
CIE Lab	85.00, 10.51, 11.66
CIE LCh	85, 15.696, 47.951
Yxy	66.0070, 0.3514, 0.3442
Android (android.graphics.Color)	4294036927 (0xFFF1CDBF)
YUV	214.1680, -11.4218, 23.5317
Hunter-Lab	81.2447, 5.8892, 14.2647

Details

The CIELCh color **85, 15.696, 47.951** is a light color, and the websafe version is hex **FFCCCC**. A complement of this color would be **88, 13.846, 230.765**, and the grayscale version is **86, 0.010, 296.813**.

A 20% lighter version of the original color is **100, 4.046, 109.857**, and **65, 15.411, 48.080** is the 20% darker color. If you saturate the color by 10%, you get **80, 24.206, 47.570**, and if you desaturate by 10%, it is **90, 7.820, 48.419**.

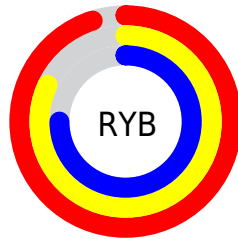
Distribution



Red (95%)

Green (80%)

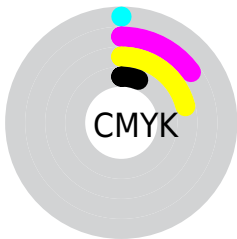
Blue (75%)



Red (95%)

Yellow (82%)

Blue (75%)

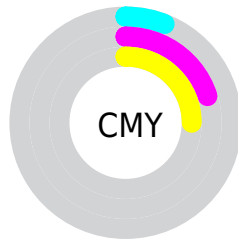


Cyan (0%)

Magenta (15%)

Yellow (21%)

Black (6%)



Cyan (6%)

Magenta (20%)

Yellow (25%)


Brightness & Saturation Gradients

These gradients show how the CIELCh color 85, 15.696, 47.951 changes by changing the brightness by 10 percent. The first figure shows a shift by +10% for each color and the second figure -10%.

Similar to the brightness gradients but the following saturation gradients show a change of the CIELCh color 85, 15.696, 47.951 by changing the saturation by 10% instead.

 85, 15.696, 47.951

 85, 15.696, 47.951

 100, 15.696,
47.951

 75, 15.696, 47.951

 65, 15.696, 47.951

 55, 15.696, 47.951

 45, 15.696, 47.951

 35, 15.696, 47.951

 25, 15.696, 47.951

 15, 15.696, 47.951

 5, 15.696, 47.951

 0, 15.696, 47.951

85, 15.696, 47.951

85, 15.696, 47.951

80, 24.206, 47.570

90, 7.820, 48.419

76, 33.393, 47.287

95, 0.527, 47.932

71, 43.261, 47.139

99, 4.882, 199.232

67, 53.750, 47.133

63, 64.663, 47.234

60, 75.516, 47.301

57, 85.235, 46.961

55, 92.062, 45.986

Harmonies

Complementary

The Complementary color scheme is a pair of colors which are on the opposite of each other on the color wheel.



85, 15.696, 47.951



88, 13.846, 230.765

Rectangle

The Rectangle color scheme consists of four colors that form a rectangle on the color wheel.



85, 15.696, 47.951



85, 15.696, 97.951



85, 15.696, 227.951



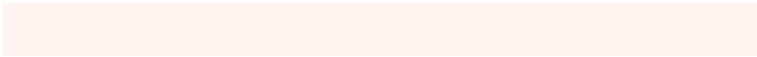
85, 15.696, 277.951

Sweetspot

The Sweet Spot groups the original color and five complimentary colors.



85, 15.695, 47.962



97, 4.485, 48.616



83, 26.361, 334.380



51, 2.982, 48.593



0, 0.000, 0.000



53, 0.007, 296.813

Same Dimension

The Same Dimension uses a secret algorithm to generate beautiful new colors.



85, 15.695, 47.962



87, 20.144, 47.781



91, 20.242, 95.841



48, 4.094, 48.477



42, 74.640, 46.521



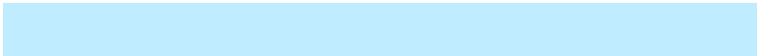
11, 25.084, 40.579

Inverse Universe

The Inverse Universe completely reimagines the original color for something new.



88, 13.846, 230.765



91, 17.255, 231.221



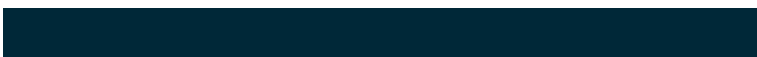
82, 20.593, 281.143



48, 3.882, 229.821



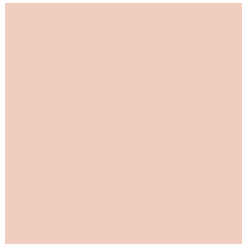
52, 37.129, 252.288



15, 15.459, 244.387

Previews

White Background



This preview shows how the CIELCh color 85, 15.696, 47.951 looks on a white background.

Color Contrast Check

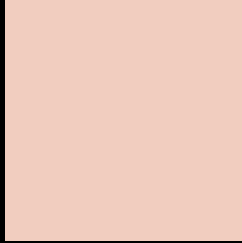
Large Text (above 18pt) WCAG AA × Fail

Any Text WCAG AA × Fail

Large Text (above 18pt) WCAG AAA × Fail

Any Text WCAG AAA × Fail

Black Background



This preview shows how the CIELCh color 85, 15.696, 47.951 looks on a black background.

Color Contrast Check

Large Text (above 18pt) WCAG AA ✓ Pass

Any Text WCAG AA ✓ Pass

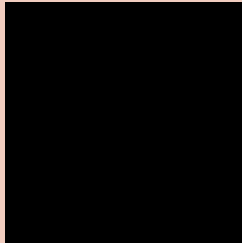
Large Text (above 18pt) WCAG AAA ✓ Pass

Any Text WCAG AAA ✓ Pass

If you want to check with other color combinations, try the [Color Contrast Checker](#).

CIELCh 85, 15.696, 47.951

Background



This preview shows how black text looks on a background with the CIELCh color 85, 15.696, 47.951.

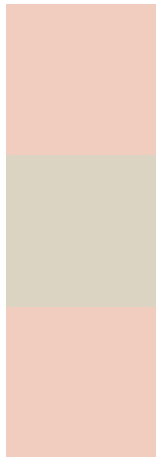


This preview shows how white text looks on a background with the CIELCh color 85, 15.696, 47.951.

Color Blindness Simulation

Color vision deficiency is a very complex topic, and I could not describe the different causes any better than Wikipedia does, so if you want to learn more, you should check out their [article about color blindness](#).

Dichromacy



Original Color

85, 15.696, 47.951

Protanopia

85, 9.881, 91.642

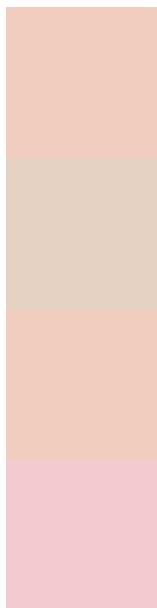
Deuteranopia

85, 15.696, 47.951



Tritanopia
85, 17.848, 352.865

Trichromacy



Original Color
85, 15.696, 47.951

Protanomaly
85, 11.058, 68.819

Deuteranomaly
85, 15.696, 47.951

Tritanomaly
85, 15.511, 10.916

Monochromacy



Original Color
85, 15.696, 47.951

Achromatopsia
86, 0.010, 296.813

Achromatomaly
85, 5.452, 48.263

CSS Examples

Text

The CSS property to change the color of the text to CIELCh 85, 15.696, 47.951 is called "color". The color property can be set on classes, ids or directly on the HTML element.

This example shows how text in the color `rgb(241, 205, 191)` looks like.

```
.text, #text, p{  
    color:rgb(241, 205, 191)  
}
```

If you want to add a text shadow in that color use the text-shadow property, you can generate a text shadow directly with our [CSS Text Shadow Generator](#).

Here you see how black text with a 4 pixel rgb(241, 205, 191) colored shadow looks like.

```
.shadow{ text-shadow: 4px 4px 2px rgb(241, 205, 191) }
```

Border

The CSS property to change the border of an element to CIELCh 85, 15.696, 47.951 is called "border". The border property can be set on classes, ids or directly on the HTML element.

This example shows the color as border, it can be applied via the CSS property "border" or "border-color".

```
.border, #border, table{ border:4px solid rgb(241, 205, 191) }
```

If only the border color should be changed use the property `border-color`.

```
.border{ border-color:rgb(241, 205, 191) }
```

If you want to add a box shadow in that color use:

Here you see how a box with a 4 pixel `rgb(241, 205, 191)` colored shadow looks like.

```
.boxshadow{ -moz-box-shadow:4px 4px 4px  
4px rgb(241, 205, 191); -webkit-box-  
shadow:4px 4px 4px 4px rgb(241, 205, 191);  
box-shadow:4px 4px 4px 4px rgb(241, 205,  
191) }
```

Background

The CSS property to change the background color of an element to CIELCh 85, 15.696, 47.951 is called "background". The background property can be set on classes, ids or directly on the HTML element.

```
.background, #background, body{  
background: rgb(241, 205, 191) }
```

If only the background color should be changed can be used:

```
.background{ background-color: rgb(241,  
205, 191) }
```

This example shows the color as background, it is applied via the CSS property "background".

To optimize and compress your CSS code, you can use our [online CSS compressor and optimizer](#) based on csstidy. If you want to create a linear or radial gradient as background or border, check our [CSS Gradient Generator](#).

Hey! You found this booklet interesting? Support Converting Colors with the new Membership Option!

The pro membership hides all ads, plus gives you double the colors in the color bucket, and more awesome pro features!

[Learn more, Memberships starting at \\$2.50/m!](#)

**Follow me
on Twitter!**

@ConvertingColor