

Converting Colors

CIELCh(85, 17.163, 29.219)

Have a look what the booklet for
CIELCh(85, 17.163, 29.219) contains.

CIELCh(85, 17.361, 29.262)	3
<i>Conversions</i>	4
<i>Details</i>	6
<i>Harmonies</i>	11
<i>Previews</i>	20
<i>Color Blindness Simulation</i>	23
<i>CSS Examples</i>	26

Color

CIELCh(85, 17.361, 29.262)

Conversions

Conversions Part 1

Format	Color
Hex	F7CAC5
RGB	247, 202, 197
RGB Percent	97%, 79%, 77%
CMY	0.0316, 0.2080, 0.2277
CMYK	0.00, 0.18, 0.20, 0.03
HSL	6°, 76%, 87%
HSV	6°, 20%, 97%
XYZ	69.5161, 66.0070, 61.8669
YIQ	214.8850, 28.4250, 7.9850

Conversions

Conversions Part 2

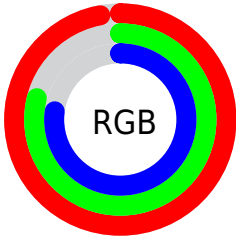
Format	Color
R _Y B	247, 203, 197
Decimal	16239301
CIE Lab	85.00, 15.15, 8.49
CIE LCh	85, 17.361, 29.262
Yxy	66.0070, 0.3522, 0.3344
Android (android.graphics.Color)	4294429381 (0xFFF7CAC5)
YUV	214.8850, -8.8173, 28.1649
Hunter-Lab	81.2447, 10.5532, 11.7226

Details

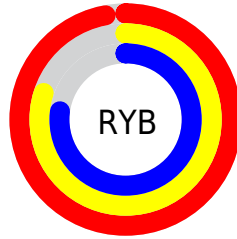
The CIELCh color **85, 17.361, 29.262** is a light color, and the websafe version is hex **FFCCCC**. A complement of this color would be **93, 15.105, 208.406**, and the grayscale version is **86, 0.010, 296.813**.

A 20% lighter version of the original color is **100, 0.496, 109.985**, and **65, 17.349, 30.067** is the 20% darker color. If you saturate the color by 10%, you get **79, 27.035, 29.892**, and if you desaturate by 10%, it is **91, 8.425, 28.816**.

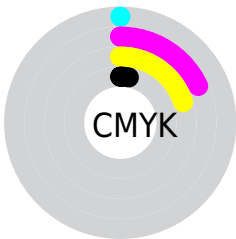
Distribution



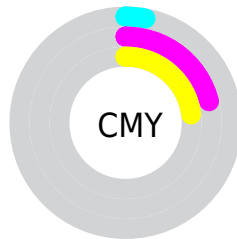
- Red (97%)
- Green (79%)
- Blue (77%)



- Red (97%)
- Yellow (80%)
- Blue (77%)



- Cyan (0%)
- Magenta (18%)
- Yellow (20%)
- Black (3%)



- Cyan (3%)
- Magenta (21%)
- Yellow (23%)

Brightness & Saturation Gradients

These gradients show how the CIELCh color 85, 17.361, 29.262 changes by changing the brightness by 10 percent. The first figure shows a shift by +10% for each color and the second figure -10%.

Similar to the brightness gradients but the following saturation gradients show a change of the CIELCh color 85, 17.361, 29.262 by changing the saturation by 10% instead.

85, 17.361, 29.262

85, 17.361, 29.262

100, 17.361,
29.262

75, 17.361, 29.262

65, 17.361, 29.262

55, 17.361, 29.262

45, 17.361, 29.262

35, 17.361, 29.262

25, 17.361, 29.262

15, 17.361, 29.262

5, 17.361, 29.262

0, 17.361, 29.262

85, 17.361, 29.262

85, 17.361, 29.262

79, 27.035, 29.892

91, 8.425, 28.816

74, 37.455, 30.757

97, 0.194, 25.260

68, 48.561, 31.938

99, 2.790, 199.466

64, 60.203, 33.499

60, 72.093, 35.460

56, 83.688, 37.704

54, 93.818, 39.760

52, 100.547,
40.934

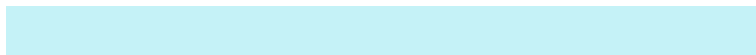
Harmonies

Complementary

The Complementary color scheme is a pair of colors which are on the opposite of each other on the color wheel.



85, 17.361, 29.262



93, 15.105, 208.406

Rectangle

The Rectangle color scheme consists of four colors that form a rectangle on the color wheel.



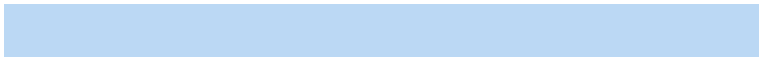
85, 17.361, 29.262



85, 17.361, 79.262



85, 17.361, 209.262



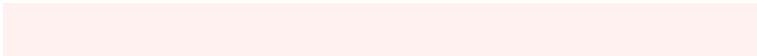
85, 17.361, 259.262

Sweetspot

The Sweet Spot groups the original color and five complimentary colors.



85, 17.359, 29.270



96, 4.976, 28.630



85, 29.469, 328.448



51, 3.309, 28.661



0, 0.000, 0.000



53, 0.007, 296.813

Same Dimension

The Same Dimension uses a secret algorithm to generate beautiful new colors.



85, 17.359, 29.270



85, 21.459, 29.482



91, 17.270, 82.773



48, 4.626, 28.784



39, 81.025, 41.172



9, 29.025, 30.347

Inverse Universe

The Inverse Universe completely reimagines the original color for something new.



93, 15.105, 208.406



94, 18.138, 208.398



86, 16.891, 268.420



50, 4.348, 208.539



63, 35.230, 214.222



19, 15.835, 211.595

Previews

White Background



This preview shows how the CIELCh color 85, 17.361, 29.262 looks on a white background.

Color Contrast Check

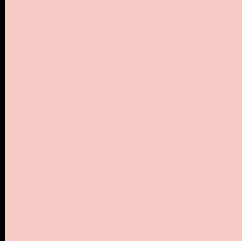
Large Text (above 18pt) WCAG AA × Fail

Any Text WCAG AA × Fail

Large Text (above 18pt) WCAG AAA × Fail

Any Text WCAG AAA × Fail

Black Background



This preview shows how the CIELCh color 85, 17.361, 29.262 looks on a black background.

Color Contrast Check

Large Text (above 18pt) WCAG AA ✓ Pass

Any Text WCAG AA ✓ Pass

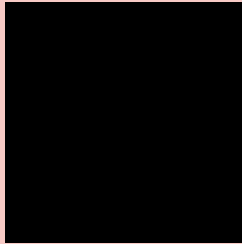
Large Text (above 18pt) WCAG AAA ✓ Pass

Any Text WCAG AAA ✓ Pass

If you want to check with other color combinations, try the [Color Contrast Checker](#).

CIELCh 85, 17.361, 29.262

Background



This preview shows how black text looks on a background with the CIELCh color 85, 17.361, 29.262.

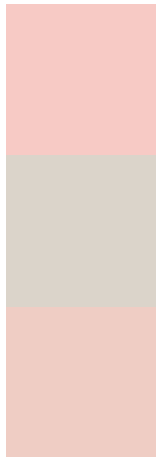


This preview shows how white text looks on a background with the CIELCh color 85, 17.361, 29.262.

Color Blindness Simulation

Color vision deficiency is a very complex topic, and I could not describe the different causes any better than Wikipedia does, so if you want to learn more, you should check out their [article about color blindness](#).

Dichromacy



Original Color

85, 17.361, 29.262

Protanopia

85, 5.826, 83.298

Deuteranopia

85, 13.776, 40.169



Tritanopia
85, 20.219, 356.629

Trichromacy



Original Color
85, 17.361, 29.262

Protanomaly
85, 8.912, 47.835

Deuteranomaly
85, 15.086, 36.429

Tritanomaly
85, 18.378, 7.741

Monochromacy



Original Color
85, 17.361, 29.262

Achromatopsia
86, 0.010, 296.813

Achromatomaly
85, 6.350, 29.240

CSS Examples

Text

The CSS property to change the color of the text to CIELCh 85, 17.361, 29.262 is called "color". The color property can be set on classes, ids or directly on the HTML element.

This example shows how text in the color `rgb(247, 202, 197)` looks like.

```
.text, #text, p{  
    color:rgb(247, 202, 197)  
}
```

If you want to add a text shadow in that color use the text-shadow property, you can generate a text shadow directly with our [CSS Text Shadow Generator](#).

Here you see how black text with a 4 pixel rgb(247, 202, 197) colored shadow looks like.

```
.shadow{ text-shadow: 4px 4px 2px rgb(247, 202, 197) }
```

Border

The CSS property to change the border of an element to CIELCh 85, 17.361, 29.262 is called "border". The border property can be set on classes, ids or directly on the HTML element.

This example shows the color as border, it can be applied via the CSS property "border" or "border-color".

```
.border, #border, table{ border:4px solid rgb(247, 202, 197) }
```

If only the border color should be changed use the property border-color.

```
.border{ border-color:rgb(247, 202, 197) }
```

If you want to add a box shadow in that color use:

Here you see how a box with a 4 pixel rgb(247, 202, 197) colored shadow looks like.

```
.boxshadow{ -moz-box-shadow:4px 4px 4px  
4px rgb(247, 202, 197); -webkit-box-  
shadow:4px 4px 4px 4px rgb(247, 202, 197);  
box-shadow:4px 4px 4px 4px rgb(247, 202,  
197) }
```

Background

The CSS property to change the background color of an element to CIELCh 85, 17.361, 29.262 is called "background". The background property can be set on classes, ids or directly on the HTML element.

```
.background, #background, body{  
background: rgb(247, 202, 197) }
```

If only the background color should be changed can be used:

```
.background{ background-color: rgb(247,  
202, 197) }
```

This example shows the color as background, it is applied via the CSS property "background".

To optimize and compress your CSS code, you can use our [online CSS compressor and optimizer](#) based on csstidy. If you want to create a linear or radial gradient as background or border, check our [CSS Gradient Generator](#).

Hey! You found this booklet interesting? Support Converting Colors with the new Membership Option!

The pro membership hides all ads, plus gives you double the colors in the color bucket, and more awesome pro features!

[Learn more, Memberships starting at \\$2.50/m!](#)

**Follow me
on Twitter!**

@ConvertingColor