

Converting Colors

CIELCh(85, 28.169, 359.045)

Have a look what the booklet for
CIELCh(85, 28.169, 359.045)
contains.

CIELCh(84, 25.343, 355.877)	3
<i>Conversions</i>	4
<i>Details</i>	6
<i>Harmonies</i>	12
<i>Previews</i>	21
<i>Color Blindness Simulation</i>	24
<i>CSS Examples</i>	27

Color

CIELCh(84, 25.343, 355.877)

Conversions

Conversions Part 1

Format	Color
Hex	FFC1D6
RGB	255, 193, 214
RGB Percent	100%, 76%, 84%
CMY	0.0011, 0.2442, 0.1619
CMYK	0.00, 0.24, 0.16, 0.00
HSL	340°, 99%, 88%
HSV	340°, 24%, 100%
XYZ	72.2460, 64.0658, 71.9918
YIQ	213.9320, 30.2110, 19.6750

Conversions

Conversions Part 2

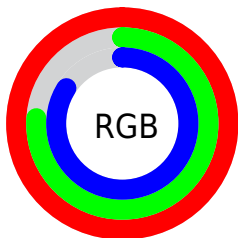
Format	Color
R _Y B	255, 193, 214
Decimal	16761302
CIE Lab	84.00, 25.28, -1.82
CIE LCh	84, 25.343, 355.877
Yxy	64.0658, 0.3468, 0.3076
Android (android.graphics.Color)	4294951382 (0xFFFFC1D6)
YUV	213.9320, 0.0335, 36.0166
Hunter-Lab	80.0411, 21.0442, 2.7012

Details

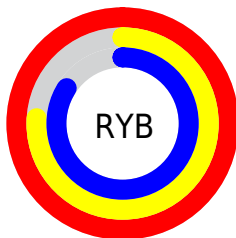
The CIELCh color **84, 25.343, 355.877** is a light color, and the websafe version is hex **FFCCCC**. A complement of this color would be **95, 23.813, 170.970**, and the grayscale version is **85, 0.010, 296.813**.

A 20% lighter version of the original color is **99, 3.114, 324.451**, and **64, 25.106, 356.072** is the 20% darker color. If you saturate the color by 10%, you get **78, 36.161, 357.248**, and if you desaturate by 10%, it is **90, 14.689, 354.704**.

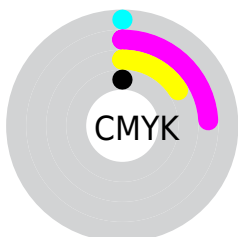
Distribution



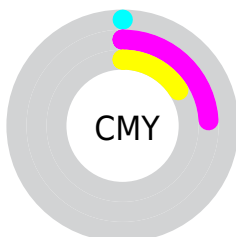
- Red (100%)
- Green (76%)
- Blue (84%)



- Red (100%)
- Yellow (76%)
- Blue (84%)



- Cyan (0%)
- Magenta (24%)
- Yellow (16%)
- Black (0%)



- Cyan (0%)
- Magenta (24%)
- Yellow (16%)


Brightness & Saturation Gradients


These gradients show how the CIELCh color 84, 25.343, 355.877 changes by changing the brightness by 10 percent. The first figure shows a shift by +10% for each color and the second figure -10%.

Similar to the brightness gradients but the following saturation gradients show a change of the CIELCh color 84, 25.343, 355.877 by changing the saturation by 10% instead.


 84, 25.343,
355.877

 84, 25.343,
355.877


 100, 25.343,
355.877


 74, 25.343,
355.877

 64, 25.343,
355.877

 54, 25.343,
355.877

 44, 25.343,
355.877

 34, 25.343,
355.877

 24, 25.343,
355.877

 14, 25.343,

355.877

■ 4, 25.343, 355.877

■ 0, 25.343, 355.877

■ 84, 25.343,
355.877

■ 84, 25.343,
355.877

■ 78, 36.161,
357.248

■ 90, 14.689,
354.704

■ 72, 46.896,
358.885

■ 97, 4.360, 353.607

■ 67, 57.165, 0.889

100, 0.100,
206.069

■ 62, 66.478, 3.399

■ 59, 74.322, 6.585

■ 56, 80.350, 10.628

■ 54, 84.618, 15.630

■ 54, 86.619, 18.762

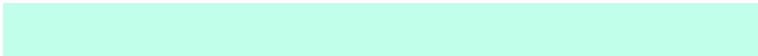
Harmonies

Complementary

The Complementary color scheme is a pair of colors which are on the opposite of each other on the color wheel.



84, 25.343, 355.877



95, 23.813, 170.970

Rectangle

The Rectangle color scheme consists of four colors that form a rectangle on the color wheel.



84, 25.343, 355.877



84, 25.343, 45.877



84, 25.343, 175.877



84, 25.343, 225.877

Sweetspot

The Sweet Spot groups the original color and five complimentary colors.



84, 25.340, 355.880



95, 7.085, 353.912



83, 35.618, 315.180



50, 4.609, 353.977



0, 0.000, 0.000



53, 0.007, 296.813

Same Dimension

The Same Dimension uses a secret algorithm to generate beautiful new colors.



84, 25.340, 355.880



81, 30.410, 356.491



86, 20.938, 34.158



50, 5.781, 354.181



40, 69.512, 17.691



10, 31.333, 9.890

Inverse Universe

The Inverse Universe completely reimagines the original color for something new.



84, 25.340, 355.880



81, 30.410, 356.491



93, 17.664, 214.235



50, 5.781, 354.181



40, 69.512, 17.691



10, 31.333, 9.890

Previews

White Background



This preview shows how the CIELCh color 84, 25.343, 355.877 looks on a white background.

Color Contrast Check

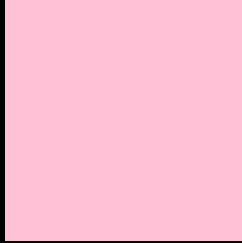
Large Text (above 18pt) WCAG AA × Fail

Any Text WCAG AA × Fail

Large Text (above 18pt) WCAG AAA × Fail

Any Text WCAG AAA × Fail

Black Background



This preview shows how the CIELCh color 84, 25.343, 355.877 looks on a black background.

Color Contrast Check

Large Text (above 18pt) WCAG AA ✓ Pass

Any Text WCAG AA ✓ Pass

Large Text (above 18pt) WCAG AAA ✓ Pass

Any Text WCAG AAA ✓ Pass

If you want to check with other color combinations, try the [Color Contrast Checker](#).

CIELCh 84, 25.343, 355.877

Background



This preview shows how black text looks on a background with the CIELCh color 84, 25.343, 355.877.



This preview shows how white text looks on a background with the CIELCh color 84, 25.343, 355.877.

Color Blindness Simulation

Color vision deficiency is a very complex topic, and I could not describe the different causes any better than Wikipedia does, so if you want to learn more, you should check out their [article about color blindness](#).

Dichromacy



Original Color
84, 25.343, 355.877

Protanopia
84, 7.400, 293.549

Deuteranopia
84, 10.658, 353.876

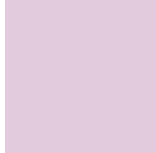


Tritanopia
84, 23.653, 2.040

Trichromacy



Original Color
84, 25.343, 355.877



Protanomaly
84, 12.257, 333.393



Deuteranomaly
84, 16.119, 353.580

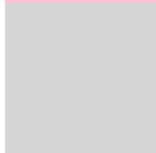


Tritanomaly
84, 23.943, 359.636

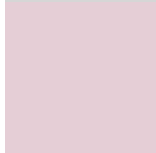
Monochromacy



Original Color
84, 25.343, 355.877



Achromatopsia
86, 0.010, 296.813



Achromatomaly
85, 9.415, 353.627

CSS Examples

Text

The CSS property to change the color of the text to CIELCh 84, 25.343, 355.877 is called "color". The color property can be set on classes, ids or directly on the HTML element.

This example shows how text in the color `rgb(255, 193, 214)` looks like.

```
.text, #text, p{  
    color:rgb(255, 193, 214)  
}
```

If you want to add a text shadow in that color use the text-shadow property, you can generate a text shadow directly with our [CSS Text Shadow Generator](#).

Here you see how black text with a 4 pixel rgb(255, 193, 214) colored shadow looks like.

```
.shadow{ text-shadow: 4px 4px 2px rgb(255, 193, 214) }
```

Border

The CSS property to change the border of an element to CIELCh 84, 25.343, 355.877 is called "border". The border property can be set on classes, ids or directly on the HTML element.

This example shows the color as border, it can be applied via the CSS property "border" or "border-color".

```
.border, #border, table{ border:4px solid rgb(255, 193, 214) }
```

If only the border color should be changed use the property border-color.

```
.border{ border-color:rgb(255, 193, 214) }
```

If you want to add a box shadow in that color use:

Here you see how a box with a 4 pixel rgb(255, 193, 214) colored shadow looks like.

```
.boxshadow{ -moz-box-shadow:4px 4px 4px  
4px rgb(255, 193, 214); -webkit-box-  
shadow:4px 4px 4px 4px rgb(255, 193, 214);  
box-shadow:4px 4px 4px 4px rgb(255, 193,  
214) }
```

Background

The CSS property to change the background color of an element to CIELCh 84, 25.343, 355.877 is called "background". The background property can be set on classes, ids or directly on the HTML element.

```
.background, #background, body{  
background: rgb(255, 193, 214) }
```

If only the background color should be changed can be used:

```
.background{ background-color: rgb(255,  
193, 214) }
```

This example shows the color as background, it is applied via the CSS property "background".

To optimize and compress your CSS code, you can use our [online CSS compressor and optimizer](#) based on csstidy. If you want to create a linear or radial gradient as background or border, check our [CSS Gradient Generator](#).

Hey! You found this booklet interesting? Support Converting Colors with the new Membership Option!

The pro membership hides all ads, plus gives you double the colors in the color bucket, and more awesome pro features!

[Learn more, Memberships starting at \\$2.50/m!](#)

**Follow me
on Twitter!**

@ConvertingColor