

Converting Colors

CIELCh(85, 4.608, 19.902)

Have a look what the booklet for
CIELCh(85, 4.608, 19.902) contains.

CIELCh(85, 4.766, 19.640)	3
<i>Conversions</i>	4
<i>Details</i>	6
<i>Harmonies</i>	11
<i>Previews</i>	20
<i>Color Blindness Simulation</i>	23
<i>CSS Examples</i>	26

Color

CIELCh(85, 4.766, 19.640)

Conversions

Conversions Part 1

Format	Color
Hex	DED1D1
RGB	222, 209, 209
RGB Percent	87%, 82%, 82%
CMY	0.1279, 0.1788, 0.1789
CMYK	0.00, 0.06, 0.06, 0.13
HSL	0°, 17%, 85%
HSV	0°, 6%, 87%
XYZ	64.6984, 66.0070, 69.9052
YIQ	212.8870, 7.7480, 2.7560

Conversions

Conversions Part 2

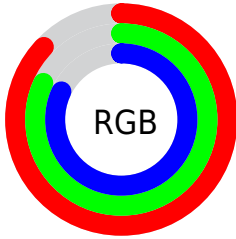
Format	Color
R _Y B	222, 209, 209
Decimal	14602705
CIE Lab	85.00, 4.49, 1.60
CIE LCh	85, 4.766, 19.640
Yxy	66.0070, 0.3225, 0.3290
Android (android.graphics.Color)	4292792785 (0xFFDED1D1)
YUV	212.8870, -1.9163, 7.9921
Hunter-Lab	81.2447, -0.0316, 5.8565

Details

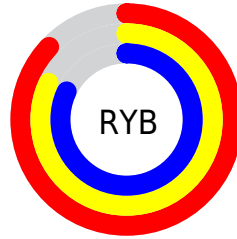
The CIELCh color **85, 4.766, 19.640** is a light color, and the websafe version is hex **CCCCCC**. A complement of this color would be **88, 4.593, 199.238**, and the grayscale version is **85, 0.010, 296.813**.

A 20% lighter version of the original color is **100, 0.012, 296.813**, and **65, 4.660, 19.740** is the 20% darker color. If you saturate the color by 10%, you get **79, 13.432, 20.483**, and if you desaturate by 10%, it is **91, 3.249, 199.399**.

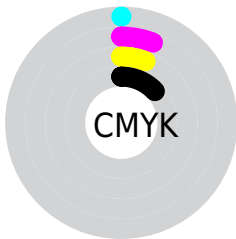
Distribution



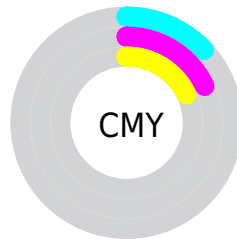
- Red (87%)
- Green (82%)
- Blue (82%)



- Red (87%)
- Yellow (82%)
- Blue (82%)



- Cyan (0%)
- Magenta (6%)
- Yellow (6%)
- Black (13%)



- Cyan (13%)
- Magenta (18%)
- Yellow (18%)

Brightness & Saturation Gradients

These gradients show how the CIELCh color 85, 4.766, 19.640 changes by changing the brightness by 10 percent. The first figure shows a shift by +10% for each color and the second figure -10%.

Similar to the brightness gradients but the following saturation gradients show a change of the CIELCh color 85, 4.766, 19.640 by changing the saturation by 10% instead.



85, 4.766, 19.640

85, 4.766, 19.640

79, 13.432, 20.483

91, 3.249, 199.399

73, 22.777, 21.459

97, 10.659,
198.819

67, 32.775, 22.718

98, 11.024,
198.770

62, 43.326, 24.363

57, 54.233, 26.507

53, 65.186, 29.243

50, 75.757, 32.564

48, 85.243, 36.149

47, 92.108, 39.040

Harmonies

Complementary

The Complementary color scheme is a pair of colors which are on the opposite of each other on the color wheel.



85, 4.766, 19.640



88, 4.593, 199.238

Rectangle

The Rectangle color scheme consists of four colors that form a rectangle on the color wheel.



85, 4.766, 19.640



85, 4.766, 69.640



85, 4.766, 199.640



85, 4.766, 249.640

Sweetspot

The Sweet Spot groups the original color and five complimentary colors.



85, 4.764, 19.664



99, 1.794, 19.183



85, 8.319, 324.729



53, 1.020, 19.158



0, 0.000, 0.000



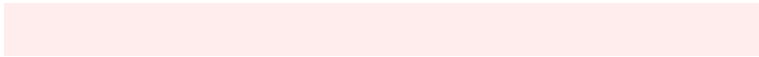
53, 0.007, 296.813

Same Dimension

The Same Dimension uses a secret algorithm to generate beautiful new colors.



85, 4.764, 19.664



95, 6.403, 19.765



87, 4.128, 74.614



45, 3.753, 19.806



36, 79.109, 39.956



6, 25.536, 20.953

Inverse Universe

The Inverse Universe completely reimagines the original color for something new.



88, 4.593, 199.238



99, 6.125, 199.151



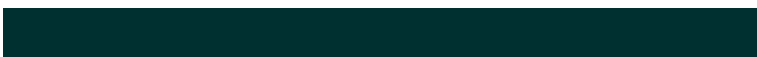
86, 4.082, 256.255



47, 3.579, 199.117



65, 37.923, 196.432



17, 15.579, 196.425

Previews

White Background



This preview shows how the CIELCh color 85, 4.766, 19.640 looks on a white background.

Color Contrast Check

Large Text (above 18pt) WCAG AA × Fail

Any Text WCAG AA × Fail

Large Text (above 18pt) WCAG AAA × Fail

Any Text WCAG AAA × Fail

Black Background



This preview shows how the CIELCh color 85, 4.766, 19.640 looks on a black background.

Color Contrast Check

Large Text (above 18pt) WCAG AA ✓ Pass

Any Text WCAG AA ✓ Pass

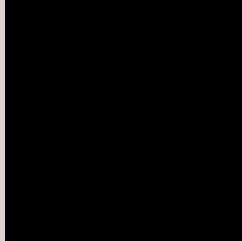
Large Text (above 18pt) WCAG AAA ✓ Pass

Any Text WCAG AAA ✓ Pass

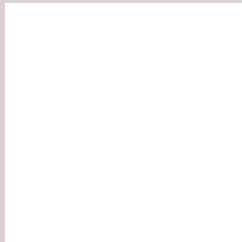
If you want to check with other color combinations, try the [Color Contrast Checker](#).

CIELCh 85, 4.766, 19.640

Background



This preview shows how black text looks on a background with the CIELCh color 85, 4.766, 19.640.



This preview shows how white text looks on a background with the CIELCh color 85, 4.766, 19.640.

Color Blindness Simulation

Color vision deficiency is a very complex topic, and I could not describe the different causes any better than Wikipedia does, so if you want to learn more, you should check out their [article about color blindness](#).

Dichromacy





Tritanopia
85, 10.871, 324.832

Trichromacy



Original Color
85, 4.766, 19.640

Protanomaly
85, 2.918, 19.425

Deuteranomaly
85, 8.253, 9.005

Tritanomaly
85, 7.960, 333.371

Monochromacy



Original Color
85, 4.766, 19.640

Achromatopsia
85, 0.010, 296.813

Achromatomaly
85, 1.452, 19.115

CSS Examples

Text

The CSS property to change the color of the text to CIELCh 85, 4.766, 19.640 is called "color". The color property can be set on classes, ids or directly on the HTML element.

This example shows how text in the color `rgb(222, 209, 209)` looks like.

```
.text, #text, p{  
    color:rgb(222, 209, 209)  
}
```

If you want to add a text shadow in that color use the text-shadow property, you can generate a text shadow directly with our [CSS Text Shadow Generator](#).

Here you see how black text with a 4 pixel rgb(222, 209, 209) colored shadow looks like.

```
.shadow{ text-shadow: 4px 4px 2px rgb(222, 209, 209) }
```

Border

The CSS property to change the border of an element to CIELCh 85, 4.766, 19.640 is called "border". The border property can be set on classes, ids or directly on the HTML element.

This example shows the color as border, it can be applied via the CSS property "border" or "border-color".

```
.border, #border, table{ border:4px solid rgb(222, 209, 209) }
```

If only the border color should be changed use the property `border-color`.

```
.border{ border-color:rgb(222, 209, 209) }
```

If you want to add a box shadow in that color use:

Here you see how a box with a 4 pixel `rgb(222, 209, 209)` colored shadow looks like.

```
.boxshadow{ -moz-box-shadow:4px 4px 4px  
4px rgb(222, 209, 209); -webkit-box-  
shadow:4px 4px 4px 4px rgb(222, 209, 209);  
box-shadow:4px 4px 4px 4px rgb(222, 209,  
209) }
```

Background

The CSS property to change the background color of an element to CIELCh 85, 4.766, 19.640 is called "background". The background property can be set on classes, ids or directly on the HTML element.

```
.background, #background, body{  
background: rgb(222, 209, 209) }
```

If only the background color should be changed can be used:

```
.background{ background-color: rgb(222,  
209, 209) }
```

This example shows the color as background, it is applied via the CSS property "background".

To optimize and compress your CSS code, you can use our [online CSS compressor and optimizer](#) based on csstidy. If you want to create a linear or radial gradient as background or border, check our [CSS Gradient Generator](#).

Hey! You found this booklet interesting? Support Converting Colors with the new Membership Option!

The pro membership hides all ads, plus gives you double the colors in the color bucket, and more awesome pro features!

[Learn more, Memberships starting at \\$2.50/m!](#)

**Follow me
on Twitter!**

@ConvertingColor