

Converting Colors

CIELCh(85, 5.065, 17.440)

Have a look what the booklet for
CIELCh(85, 5.065, 17.440) contains.

CIELCh(85, 5.158, 13.855)	3
<i>Conversions</i>	4
<i>Details</i>	6
<i>Harmonies</i>	11
<i>Previews</i>	20
<i>Color Blindness Simulation</i>	23
<i>CSS Examples</i>	26

Color

CIELCh(85, 5.158, 13.855)

Conversions

Conversions Part 1

Format	Color
Hex	DFD1D2
RGB	223, 209, 210
RGB Percent	87%, 82%, 82%
CMY	0.1251, 0.1800, 0.1761
CMYK	0.00, 0.06, 0.06, 0.13
HSL	356°, 18%, 85%
HSV	356°, 6%, 87%
XYZ	64.9278, 66.0070, 70.3519
YIQ	213.3000, 8.0230, 3.2790

Conversions

Conversions Part 2

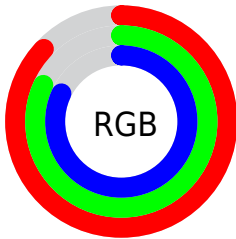
Format	Color
RYB	223, 209, 210
Decimal	14668242
CIELab	85.00, 5.01, 1.24
CIELCh	85, 5.158, 13.855
Yxy	66.0070, 0.3226, 0.3279
Android (android.graphics.Color)	4292858322 (0xFFDFD1D2)
YUV	213.3000, -1.6269, 8.5069
Hunter-Lab	81.2447, 0.4724, 5.5305

Details

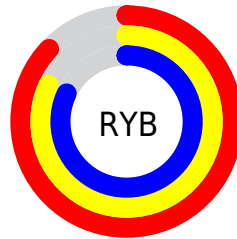
The CIELCh color **85, 5.158, 13.855** is a light color, and the websafe version is hex **CCCCCC**. A complement of this color would be **88, 4.981, 193.173**, and the grayscale version is **85, 0.010, 296.813**.

A 20% lighter version of the original color is **100, 0.012, 296.813**, and **65, 5.076, 13.539** is the 20% darker color. If you saturate the color by 10%, you get **79, 13.848, 14.848**, and if you desaturate by 10%, it is **91, 2.952, 193.452**.

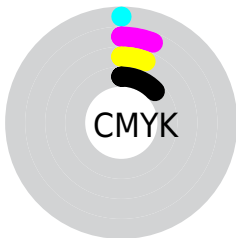
Distribution



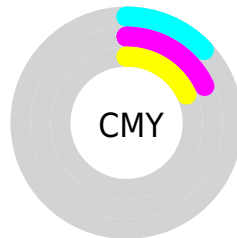
- Red (87%)
- Green (82%)
- Blue (82%)



- Red (87%)
- Yellow (82%)
- Blue (82%)



- Cyan (0%)
- Magenta (6%)
- Yellow (6%)
- Black (13%)



- Cyan (13%)
- Magenta (18%)
- Yellow (18%)

Brightness & Saturation Gradients

These gradients show how the CIELCh color 85, 5.158, 13.855 changes by changing the brightness by 10 percent. The first figure shows a shift by +10% for each color and the second figure -10%.

Similar to the brightness gradients but the following saturation gradients show a change of the CIELCh color 85, 5.158, 13.855 by changing the saturation by 10% instead.



85, 5.158, 13.855

85, 5.158, 13.855

79, 13.848, 14.848

91, 2.952, 193.452

73, 23.123, 15.983

97, 10.508,
192.696

67, 32.926, 17.400

98, 10.796,
198.786

62, 43.124, 19.201

57, 53.488, 21.510

53, 63.702, 24.449

50, 73.405, 28.086

48, 82.210, 32.286

47, 89.462, 36.454

Harmonies

Complementary

The Complementary color scheme is a pair of colors which are on the opposite of each other on the color wheel.



85, 5.158, 13.855



88, 4.981, 193.173

Rectangle

The Rectangle color scheme consists of four colors that form a rectangle on the color wheel.



85, 5.158, 13.855



85, 5.158, 63.855



85, 5.158, 193.855



85, 5.158, 243.855

Sweetspot

The Sweet Spot groups the original color and five complimentary colors.



85, 5.156, 13.875



99, 1.806, 13.298



85, 8.721, 322.461



53, 1.027, 13.272



0, 0.000, 0.000



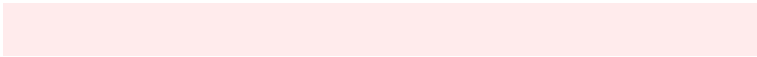
53, 0.007, 296.813

Same Dimension

The Same Dimension uses a secret algorithm to generate beautiful new colors.



85, 5.156, 13.875



95, 7.374, 14.049



86, 4.252, 65.122



44, 4.741, 14.180



36, 76.174, 37.056



6, 25.390, 17.944

Inverse Universe

The Inverse Universe completely reimagines the original color for something new.



85, 5.156, 13.875



95, 7.374, 14.049



86, 4.164, 246.715



44, 4.741, 14.180



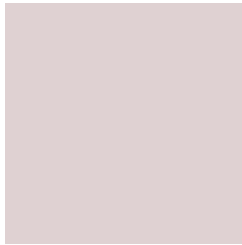
36, 76.174, 37.056



6, 25.390, 17.944

Previews

White Background



This preview shows how the CIELCh color 85, 5.158, 13.855 looks on a white background.

Color Contrast Check

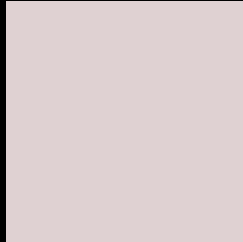
Large Text (above 18pt) WCAG AA × Fail

Any Text WCAG AA × Fail

Large Text (above 18pt) WCAG AAA × Fail

Any Text WCAG AAA × Fail

Black Background



This preview shows how the CIE LCh color 85, 5.158, 13.855 looks on a black background.

Color Contrast Check

Large Text (above 18pt) WCAG AA ✓ Pass

Any Text WCAG AA ✓ Pass

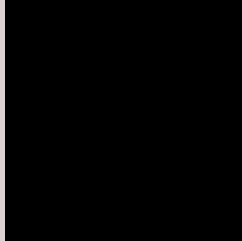
Large Text (above 18pt) WCAG AAA ✓ Pass

Any Text WCAG AAA ✓ Pass

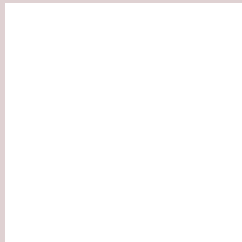
If you want to check with other color combinations, try the [Color Contrast Checker](#).

CIELCh 85, 5.158, 13.855

Background



This preview shows how black text looks on a background with the CIELCh color 85, 5.158, 13.855.



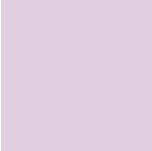
This preview shows how white text looks on a background with the CIELCh color 85, 5.158, 13.855.

Color Blindness Simulation

Color vision deficiency is a very complex topic, and I could not describe the different causes any better than Wikipedia does, so if you want to learn more, you should check out their [article about color blindness](#).

Dichromacy





Tritanopia
85, 10.658, 328.048

Trichromacy



Original Color
85, 5.158, 13.855

Protanomaly
85, 3.327, 10.413

Deuteranomaly
85, 8.857, 2.829

Tritanomaly
85, 7.853, 337.959

Monochromacy



Original Color
85, 5.158, 13.855

Achromatopsia
85, 0.010, 296.813

Achromatomaly
85, 1.816, 19.221

CSS Examples

Text

The CSS property to change the color of the text to CIELCh 85, 5.158, 13.855 is called "color". The color property can be set on classes, ids or directly on the HTML element.

This example shows how text in the color `rgb(223, 209, 210)` looks like.

```
.text, #text, p{  
    color:rgb(223, 209, 210)  
}
```

If you want to add a text shadow in that color use the text-shadow property, you can generate a text shadow directly with our [CSS Text Shadow Generator](#).

Here you see how black text with a 4 pixel rgb(223, 209, 210) colored shadow looks like.

```
.shadow{ text-shadow: 4px 4px 2px rgb(223, 209, 210) }
```

Border

The CSS property to change the border of an element to CIELCh 85, 5.158, 13.855 is called "border". The border property can be set on classes, ids or directly on the HTML element.

This example shows the color as border, it can be applied via the CSS property "border" or "border-color".

```
.border, #border, table{ border:4px solid rgb(223, 209, 210) }
```

If only the border color should be changed use the property border-color.

```
.border{ border-color:rgb(223, 209, 210) }
```

If you want to add a box shadow in that color use:

Here you see how a box with a 4 pixel rgb(223, 209, 210) colored shadow looks like.

```
.boxshadow{ -moz-box-shadow:4px 4px 4px  
4px rgb(223, 209, 210); -webkit-box-  
shadow:4px 4px 4px 4px rgb(223, 209, 210);  
box-shadow:4px 4px 4px 4px rgb(223, 209,  
210) }
```

Background

The CSS property to change the background color of an element to CIELCh 85, 5.158, 13.855 is called "background". The background property can be set on classes, ids or directly on the HTML element.

```
.background, #background, body{  
background: rgb(223, 209, 210) }
```

If only the background color should be changed can be used:

```
.background{ background-color: rgb(223,  
209, 210) }
```

This example shows the color as background, it is applied via the CSS property "background".

To optimize and compress your CSS code, you can use our [online CSS compressor and optimizer](#) based on csstidy. If you want to create a linear or radial gradient as background or border, check our [CSS Gradient Generator](#).

Hey! You found this booklet interesting? Support Converting Colors with the new Membership Option!

The pro membership hides all ads, plus gives you double the colors in the color bucket, and more awesome pro features!

[Learn more, Memberships starting at \\$2.50/m!](#)

**Follow me
on Twitter!**

@ConvertingColor