

Converting Colors

CIELCh(85, 5.095, 19.875)

Have a look what the booklet for
CIELCh(85, 5.095, 19.875) contains.

CIELCh(85, 5.136, 19.676)	3
<i>Conversions</i>	4
<i>Details</i>	6
<i>Harmonies</i>	11
<i>Previews</i>	20
<i>Color Blindness Simulation</i>	23
<i>CSS Examples</i>	26

Color

CIELCh(85, 5.136, 19.676)

Conversions

Conversions Part 1

Format	Color
Hex	DFD1D1
RGB	223, 209, 209
RGB Percent	87%, 82%, 82%
CMY	0.1248, 0.1797, 0.1797
CMYK	0.00, 0.06, 0.06, 0.12
HSL	0°, 18%, 85%
HSV	0°, 6%, 88%
XYZ	64.8518, 66.0070, 69.7505
YIQ	213.1860, 8.3440, 2.9680

Conversions

Conversions Part 2

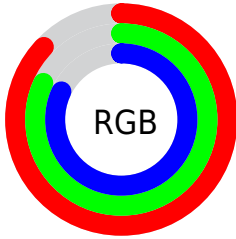
Format	Color
R _Y B	223, 209, 209
Decimal	14668241
CIE Lab	85.00, 4.84, 1.73
CIE LCh	85, 5.136, 19.676
Yxy	66.0070, 0.3233, 0.3290
Android (android.graphics.Color)	4292858321 (0xFFDFD1D1)
YUV	213.1860, -2.0637, 8.6069
Hunter-Lab	81.2447, 0.3055, 5.9695

Details

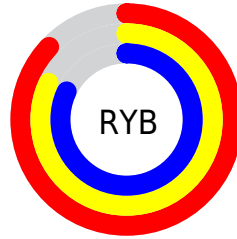
The CIELCh color **85, 5.136, 19.676** is a light color, and the websafe version is hex **CCCCCC**. A complement of this color would be **88, 4.936, 199.204**, and the grayscale version is **85, 0.010, 296.813**.

A 20% lighter version of the original color is **100, 0.012, 296.813**, and **65, 5.054, 19.785** is the 20% darker color. If you saturate the color by 10%, you get **79, 13.856, 20.518**, and if you desaturate by 10%, it is **91, 2.929, 199.439**.

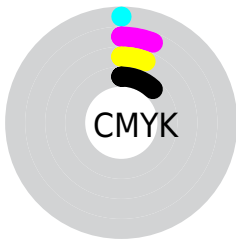
Distribution



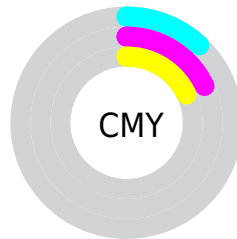
- Red (87%)
- Green (82%)
- Blue (82%)



- Red (87%)
- Yellow (82%)
- Blue (82%)



- Cyan (0%)
- Magenta (6%)
- Yellow (6%)
- Black (12%)



- Cyan (12%)
- Magenta (18%)
- Yellow (18%)

Brightness & Saturation Gradients

These gradients show how the CIELCh color 85, 5.136, 19.676 changes by changing the brightness by 10 percent. The first figure shows a shift by +10% for each color and the second figure -10%.

Similar to the brightness gradients but the following saturation gradients show a change of the CIELCh color 85, 5.136, 19.676 by changing the saturation by 10% instead.

85, 5.136, 19.676

85, 5.136, 19.676

100, 5.136, 19.676

75, 5.136, 19.676

65, 5.136, 19.676

55, 5.136, 19.676

45, 5.136, 19.676

35, 5.136, 19.676

25, 5.136, 19.676

15, 5.136, 19.676

5, 5.136, 19.676

0, 5.136, 19.676

85, 5.136, 19.676

85, 5.136, 19.676

79, 13.856, 20.518

91, 2.929, 199.439

73, 23.256, 21.504

97, 10.384,
198.835

67, 33.309, 22.779

98, 10.773,
198.787

62, 43.910, 24.444

57, 54.857, 26.612

53, 65.834, 29.377

50, 76.405, 32.720

48, 85.843, 36.301

47, 92.570, 39.136

Harmonies

Complementary

The Complementary color scheme is a pair of colors which are on the opposite of each other on the color wheel.



85, 5.136, 19.676



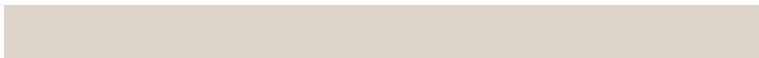
88, 4.936, 199.204

Rectangle

The Rectangle color scheme consists of four colors that form a rectangle on the color wheel.



85, 5.136, 19.676



85, 5.136, 69.676



85, 5.136, 199.676



85, 5.136, 249.676

Sweetspot

The Sweet Spot groups the original color and five complimentary colors.



85, 5.134, 19.698



99, 1.794, 19.181



85, 8.952, 324.755



53, 1.020, 19.156



0, 0.000, 0.000



53, 0.007, 296.813

Same Dimension

The Same Dimension uses a secret algorithm to generate beautiful new colors.



85, 5.134, 19.698



94, 7.347, 19.845



87, 4.446, 74.568



44, 4.727, 19.955



36, 79.110, 39.956



6, 25.536, 20.952

Inverse Universe

The Inverse Universe completely reimagines the original color for something new.



88, 4.936, 199.204



99, 6.983, 199.082



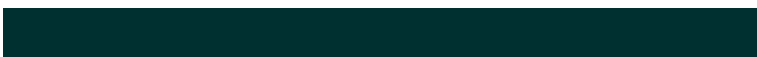
86, 4.391, 256.305



46, 4.453, 198.994



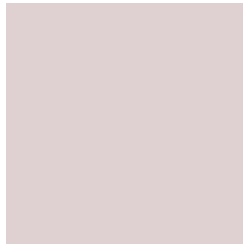
65, 37.925, 196.428



17, 15.580, 196.421

Previews

White Background



This preview shows how the CIELCh color 85, 5.136, 19.676 looks on a white background.

Color Contrast Check

Large Text (above 18pt) WCAG AA × Fail

Any Text WCAG AA × Fail

Large Text (above 18pt) WCAG AAA × Fail

Any Text WCAG AAA × Fail

Black Background



This preview shows how the CIE LCh color 85, 5.136, 19.676 looks on a black background.

Color Contrast Check

Large Text (above 18pt) WCAG AA ✓ Pass

Any Text WCAG AA ✓ Pass

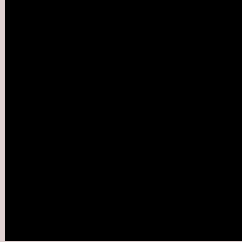
Large Text (above 18pt) WCAG AAA ✓ Pass

Any Text WCAG AAA ✓ Pass

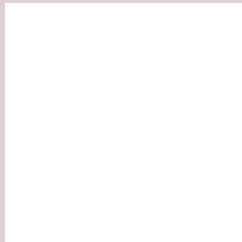
If you want to check with other color combinations, try the [Color Contrast Checker](#).

CIELCh 85, 5.136, 19.676

Background



This preview shows how black text looks on a background with the CIELCh color 85, 5.136, 19.676.



This preview shows how white text looks on a background with the CIELCh color 85, 5.136, 19.676.

Color Blindness Simulation

Color vision deficiency is a very complex topic, and I could not describe the different causes any better than Wikipedia does, so if you want to learn more, you should check out their [article about color blindness](#).

Dichromacy



Original Color

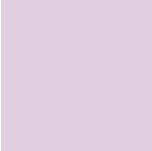
85, 5.136, 19.676

Protanopia

85, 1.887, 35.362

Deuteranopia

85, 11.027, 6.499



Tritanopia
85, 10.658, 328.048

Trichromacy



Original Color
85, 5.136, 19.676

Protanomaly
85, 3.285, 19.474

Deuteranomaly
85, 8.620, 9.512

Tritanomaly
85, 7.853, 337.959

Monochromacy



Original Color
85, 5.136, 19.676

Achromatopsia
85, 0.010, 296.813

Achromatomaly
85, 1.816, 19.221

CSS Examples

Text

The CSS property to change the color of the text to CIELCh 85, 5.136, 19.676 is called "color". The color property can be set on classes, ids or directly on the HTML element.

This example shows how text in the color `rgb(223, 209, 209)` looks like.

```
.text, #text, p{  
    color:rgb(223, 209, 209)  
}
```

If you want to add a text shadow in that color use the text-shadow property, you can generate a text shadow directly with our [CSS Text Shadow Generator](#).

Here you see how black text with a 4 pixel rgb(223, 209, 209) colored shadow looks like.

```
.shadow{ text-shadow: 4px 4px 2px rgb(223, 209, 209) }
```

Border

The CSS property to change the border of an element to CIELCh 85, 5.136, 19.676 is called "border". The border property can be set on classes, ids or directly on the HTML element.

This example shows the color as border, it can be applied via the CSS property "border" or "border-color".

```
.border, #border, table{ border:4px solid rgb(223, 209, 209) }
```

If only the border color should be changed use the property `border-color`.

```
.border{ border-color:rgb(223, 209, 209) }
```

If you want to add a box shadow in that color use:

Here you see how a box with a 4 pixel `rgb(223, 209, 209)` colored shadow looks like.

```
.boxshadow{ -moz-box-shadow:4px 4px 4px  
4px rgb(223, 209, 209); -webkit-box-  
shadow:4px 4px 4px 4px rgb(223, 209, 209);  
box-shadow:4px 4px 4px 4px rgb(223, 209,  
209) }
```

Background

The CSS property to change the background color of an element to CIELCh 85, 5.136, 19.676 is called "background". The background property can be set on classes, ids or directly on the HTML element.

```
.background, #background, body{  
background: rgb(223, 209, 209) }
```

If only the background color should be changed can be used:

```
.background{ background-color: rgb(223,  
209, 209) }
```

This example shows the color as background, it is applied via the CSS property "background".

To optimize and compress your CSS code, you can use our [online CSS compressor and optimizer](#) based on csstidy. If you want to create a linear or radial gradient as background or border, check our [CSS Gradient Generator](#).

Hey! You found this booklet interesting? Support Converting Colors with the new Membership Option!

The pro membership hides all ads, plus gives you double the colors in the color bucket, and more awesome pro features!

[Learn more, Memberships starting at \\$2.50/m!](#)

**Follow me
on Twitter!**

@ConvertingColor