

Converting Colors

CIELCh(85, 5.506, 19.726)

Have a look what the booklet for
CIELCh(85, 5.506, 19.726) contains.

CIELCh(85, 5.508, 19.712)	3
<i>Conversions</i>	4
<i>Details</i>	6
<i>Harmonies</i>	11
<i>Previews</i>	20
<i>Color Blindness Simulation</i>	23
<i>CSS Examples</i>	26

Color

CIELCh(85, 5.508, 19.712)

Conversions

Conversions Part 1

Format	Color
Hex	E0D1D1
RGB	224, 209, 209
RGB Percent	88%, 82%, 82%
CMY	0.1218, 0.1806, 0.1806
CMYK	0.00, 0.07, 0.07, 0.12
HSL	0°, 19%, 85%
HSV	0°, 7%, 88%
XYZ	65.0062, 66.0070, 69.5946
YIQ	213.4850, 8.9400, 3.1800

Conversions

Conversions Part 2

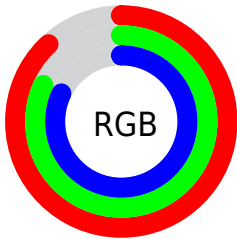
Format	Color
RYB	224, 209, 209
Decimal	14733777
CIELab	85.00, 5.19, 1.86
CIElCh	85, 5.508, 19.712
Yxy	66.0070, 0.3240, 0.3290
Android (android.graphics.Color)	4292923857 (0xFFE0D1D1)
YUV	213.4850, -2.2111, 9.2217
Hunter-Lab	81.2447, 0.6448, 6.0832

Details

The CIELCh color **85, 5.508, 19.712** is a light color, and the websafe version is hex **CCCCCC**. A complement of this color would be **88, 5.280, 199.172**, and the grayscale version is **85, 0.010, 296.813**.

A 20% lighter version of the original color is **100, 0.012, 296.813**, and **65, 5.449, 19.828** is the 20% darker color. If you saturate the color by 10%, you get **79, 14.281, 20.555**, and if you desaturate by 10%, it is **91, 2.607, 199.485**.

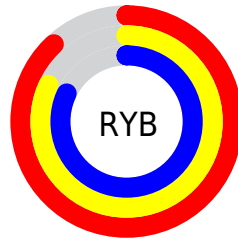
Distribution



Red (88%)

Green (82%)

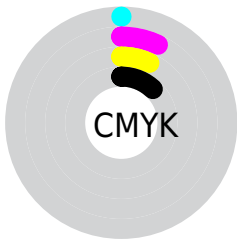
Blue (82%)



Red (88%)

Yellow (82%)

Blue (82%)

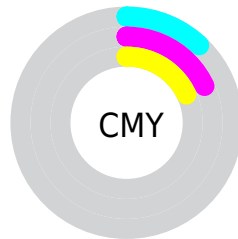


Cyan (0%)

Magenta (7%)

Yellow (7%)

Black (12%)



Cyan (12%)

Magenta (18%)

Yellow (18%)

Brightness & Saturation Gradients

These gradients show how the CIELCh color 85, 5.508, 19.712 changes by changing the brightness by 10 percent. The first figure shows a shift by +10% for each color and the second figure -10%.

Similar to the brightness gradients but the following saturation gradients show a change of the CIELCh color 85, 5.508, 19.712 by changing the saturation by 10% instead.



85, 5.508, 19.712

85, 5.508, 19.712

79, 14.281, 20.555

91, 2.607, 199.485

73, 23.737, 21.552

98, 10.108,
198.853

67, 33.845, 22.841

98, 10.520,
198.804

62, 44.496, 24.526

57, 55.482, 26.719

53, 66.482, 29.511

50, 77.052, 32.877

48, 86.439, 36.452

47, 93.033, 39.233

Harmonies

Complementary

The Complementary color scheme is a pair of colors which are on the opposite of each other on the color wheel.



85, 5.508, 19.712



88, 5.280, 199.172

Rectangle

The Rectangle color scheme consists of four colors that form a rectangle on the color wheel.



85, 5.508, 19.712



85, 5.508, 69.712



85, 5.508, 199.712



85, 5.508, 249.712

Sweetspot

The Sweet Spot groups the original color and five complimentary colors.



85, 5.506, 19.733



99, 1.794, 19.180



85, 9.587, 324.780



53, 1.020, 19.154



0, 0.000, 0.000



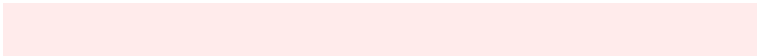
53, 0.007, 296.813

Same Dimension

The Same Dimension uses a secret algorithm to generate beautiful new colors.



85, 5.506, 19.733



94, 7.347, 19.844



87, 4.765, 74.522



44, 4.727, 19.954



36, 79.110, 39.955



6, 25.536, 20.951

Inverse Universe

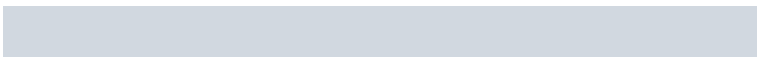
The Inverse Universe completely reimagines the original color for something new.



88, 5.280, 199.172



99, 6.983, 199.081



86, 4.700, 256.356



46, 4.453, 198.993



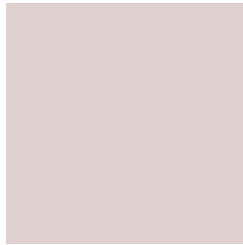
65, 37.925, 196.426



17, 15.580, 196.420

Previews

White Background



This preview shows how the CIELCh color 85, 5.508, 19.712 looks on a white background.

Color Contrast Check

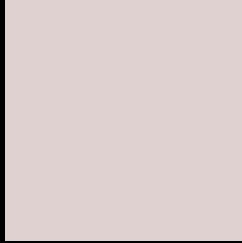
Large Text (above 18pt) WCAG AA × Fail

Any Text WCAG AA × Fail

Large Text (above 18pt) WCAG AAA × Fail

Any Text WCAG AAA × Fail

Black Background



This preview shows how the CIELCh color 85, 5.508, 19.712 looks on a black background.

Color Contrast Check

Large Text (above 18pt) WCAG AA ✓ Pass

Any Text WCAG AA ✓ Pass

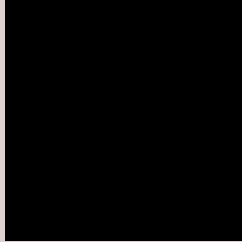
Large Text (above 18pt) WCAG AAA ✓ Pass

Any Text WCAG AAA ✓ Pass

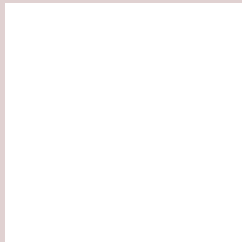
If you want to check with other color combinations, try the [Color Contrast Checker](#).

CIELCh 85, 5.508, 19.712

Background



This preview shows how black text looks on a background with the CIELCh color 85, 5.508, 19.712.



This preview shows how white text looks on a background with the CIELCh color 85, 5.508, 19.712.

Color Blindness Simulation

Color vision deficiency is a very complex topic, and I could not describe the different causes any better than Wikipedia does, so if you want to learn more, you should check out their [article about color blindness](#).

Dichromacy



Original Color

85, 5.508, 19.712

Protanopia

85, 1.887, 35.362

Deuteranopia

85, 11.027, 6.499



Tritanopia
85, 10.880, 329.577

Trichromacy



Original Color
85, 5.508, 19.712

Protanomaly
85, 3.285, 19.474

Deuteranomaly
85, 9.090, 6.729

Tritanomaly
85, 8.125, 339.712

Monochromacy



Original Color
85, 5.508, 19.712

Achromatopsia
85, 0.010, 296.813

Achromatomaly
85, 1.816, 19.221

CSS Examples

Text

The CSS property to change the color of the text to CIELCh 85, 5.508, 19.712 is called "color". The color property can be set on classes, ids or directly on the HTML element.

This example shows how text in the color `rgb(224, 209, 209)` looks like.

```
.text, #text, p{  
    color:rgb(224, 209, 209)  
}
```

If you want to add a text shadow in that color use the text-shadow property, you can generate a text shadow directly with our [CSS Text Shadow Generator](#).

Here you see how black text with a 4 pixel rgb(224, 209, 209) colored shadow looks like.

```
.shadow{ text-shadow: 4px 4px 2px rgb(224, 209, 209) }
```

Border

The CSS property to change the border of an element to CIELCh 85, 5.508, 19.712 is called "border". The border property can be set on classes, ids or directly on the HTML element.

This example shows the color as border, it can be applied via the CSS property "border" or "border-color".

```
.border, #border, table{ border:4px solid rgb(224, 209, 209) }
```

If only the border color should be changed use the property `border-color`.

```
.border{ border-color:rgb(224, 209, 209) }
```

If you want to add a box shadow in that color use:

Here you see how a box with a 4 pixel `rgb(224, 209, 209)` colored shadow looks like.

```
.boxshadow{ -moz-box-shadow:4px 4px 4px  
4px rgb(224, 209, 209); -webkit-box-  
shadow:4px 4px 4px 4px rgb(224, 209, 209);  
box-shadow:4px 4px 4px 4px rgb(224, 209,  
209) }
```

Background

The CSS property to change the background color of an element to CIELCh 85, 5.508, 19.712 is called "background". The background property can be set on classes, ids or directly on the HTML element.

```
.background, #background, body{  
background: rgb(224, 209, 209) }
```

If only the background color should be changed can be used:

```
.background{ background-color: rgb(224,  
209, 209) }
```

This example shows the color as background, it is applied via the CSS property "background".

To optimize and compress your CSS code, you can use our [online CSS compressor and optimizer](#) based on csstidy. If you want to create a linear or radial gradient as background or border, check our [CSS Gradient Generator](#).

Hey! You found this booklet interesting? Support Converting Colors with the new Membership Option!

The pro membership hides all ads, plus gives you double the colors in the color bucket, and more awesome pro features!

[Learn more, Memberships starting at \\$2.50/m!](#)

**Follow me
on Twitter!**

@ConvertingColor