

Converting Colors

CIELCh(85, 5.618, 358.835)

Have a look what the booklet for
CIELCh(85, 5.618, 358.835) contains.

CIELCh(85, 5.534, 357.452)	3
<i>Conversions</i>	4
<i>Details</i>	6
<i>Harmonies</i>	11
<i>Previews</i>	20
<i>Color Blindness Simulation</i>	23
<i>CSS Examples</i>	26

Color

CIELCh(85, 5.534, 357.452)

Conversions

Conversions Part 1

Format	Color
Hex	DFD1D5
RGB	223, 209, 213
RGB Percent	87%, 82%, 84%
CMY	0.1260, 0.1809, 0.1652
CMYK	0.00, 0.06, 0.04, 0.13
HSL	343°, 18%, 85%
HSV	343°, 6%, 87%
XYZ	65.1583, 66.0070, 72.1755
YIQ	213.6420, 7.0600, 4.2120

Conversions

Conversions Part 2

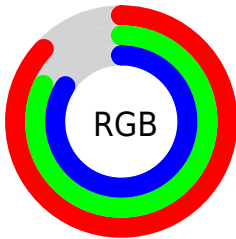
Format	Color
R _Y B	223, 209, 213
Decimal	14668245
CIE Lab	85.00, 5.53, -0.25
CIE LCh	85, 5.534, 357.452
Yxy	66.0070, 0.3204, 0.3246
Android (android.graphics.Color)	4292858325 (0xFFDFD1D5)
YUV	213.6420, -0.3165, 8.2070
Hunter-Lab	81.2447, 0.9789, 4.1998

Details

The CIELCh color **85, 5.534, 357.452** is a light color, and the websafe version is hex **CCCCCC**. A complement of this color would be **88, 5.423, 176.493**, and the grayscale version is **85, 0.010, 296.813**.

A 20% lighter version of the original color is **100, 0.012, 296.813**, and **65, 5.299, 1.564** is the 20% darker color. If you saturate the color by 10%, you get **79, 14.644, 358.571**, and if you desaturate by 10%, it is **91, 3.195, 176.812**.

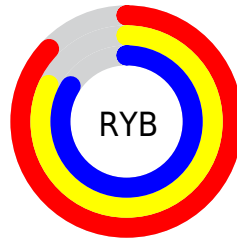
Distribution



Red (87%)

Green (82%)

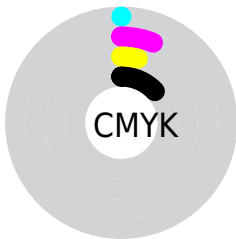
Blue (84%)



Red (87%)

Yellow (82%)

Blue (84%)

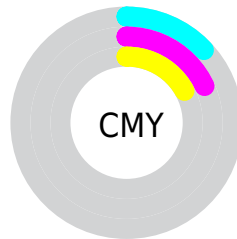


Cyan (0%)

Magenta (6%)

Yellow (4%)

Black (13%)



Cyan (13%)

Magenta (18%)

Yellow (17%)

Brightness & Saturation Gradients

These gradients show how the CIELCh color 85, 5.534, 357.452 changes by changing the brightness by 10 percent. The first figure shows a shift by +10% for each color and the second figure -10%.

Similar to the brightness gradients but the following saturation gradients show a change of the CIELCh color 85, 5.534, 357.452 by changing the saturation by 10% instead.

85, 5.534, 357.452

85, 5.534, 357.452

100, 5.534,
357.452

75, 5.534, 357.452

65, 5.534, 357.452

55, 5.534, 357.452

45, 5.534, 357.452

35, 5.534, 357.452

25, 5.534, 357.452

15, 5.534, 357.452

5, 5.534, 357.452

0, 5.534, 357.452

85, 5.534, 357.452

85, 5.534, 357.452

79, 14.644,
358.571

91, 3.195, 176.812

73, 24.078,
359.806

97, 11.515,
175.889

68, 33.701, 1.264

98, 10.867,
198.781

63, 43.288, 3.031

58, 52.511, 5.220

54, 60.953, 7.978

51, 68.203, 11.477

49, 74.021, 15.866

47, 78.535, 21.151

Harmonies

Complementary

The Complementary color scheme is a pair of colors which are on the opposite of each other on the color wheel.



85, 5.534, 357.452



88, 5.423, 176.493

Rectangle

The Rectangle color scheme consists of four colors that form a rectangle on the color wheel.



85, 5.534, 357.452



85, 5.534, 47.452



85, 5.534, 177.452



85, 5.534, 227.452

Sweetspot

The Sweet Spot groups the original color and five complimentary colors.



85, 5.532, 357.465



99, 1.950, 356.859



85, 8.197, 315.971



53, 1.109, 356.835



0, 0.000, 0.000



53, 0.007, 296.813

Same Dimension

The Same Dimension uses a secret algorithm to generate beautiful new colors.



85, 5.532, 357.465



95, 7.891, 357.662



86, 4.350, 39.217



44, 5.064, 357.813



37, 66.776, 22.184



6, 25.335, 8.463

Inverse Universe

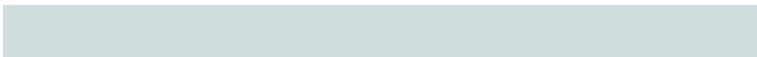
The Inverse Universe completely reimagines the original color for something new.



85, 5.532, 357.465



95, 7.891, 357.662



87, 4.188, 219.783



44, 5.064, 357.813



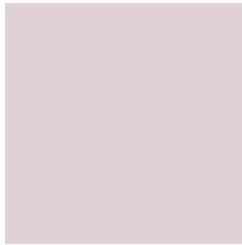
37, 66.776, 22.184



6, 25.335, 8.463

Previews

White Background



This preview shows how the CIELCh color 85, 5.534, 357.452 looks on a white background.

Color Contrast Check

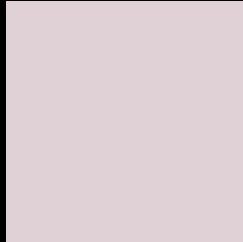
Large Text (above 18pt) WCAG AA × Fail

Any Text WCAG AA × Fail

Large Text (above 18pt) WCAG AAA × Fail

Any Text WCAG AAA × Fail

Black Background



This preview shows how the CIELCh color 85, 5.534, 357.452 looks on a black background.

Color Contrast Check

Large Text (above 18pt) WCAG AA ✓ Pass

Any Text WCAG AA ✓ Pass

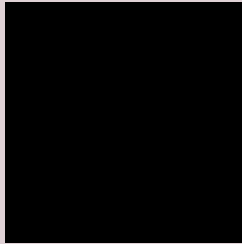
Large Text (above 18pt) WCAG AAA ✓ Pass

Any Text WCAG AAA ✓ Pass

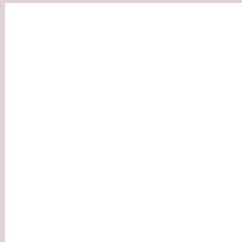
If you want to check with other color combinations, try the [Color Contrast Checker](#).

CIELCh 85, 5.534, 357.452

Background



This preview shows how black text looks on a background with the CIELCh color 85, 5.534, 357.452.

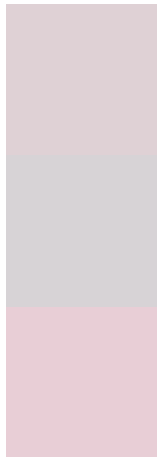


This preview shows how white text looks on a background with the CIELCh color 85, 5.534, 357.452.

Color Blindness Simulation

Color vision deficiency is a very complex topic, and I could not describe the different causes any better than Wikipedia does, so if you want to learn more, you should check out their [article about color blindness](#).

Dichromacy



Original Color

85, 5.534, 357.452

Protanopia

85, 2.159, 332.301

Deuteranopia

85, 10.419, 356.461



Tritanopia
85, 10.871, 324.832

Trichromacy



Original Color
85, 5.534, 357.452

Protanomaly
85, 3.603, 343.830

Deuteranomaly
85, 8.857, 355.569

Tritanomaly
85, 8.588, 332.762

Monochromacy



Original Color
85, 5.534, 357.452

Achromatopsia
86, 0.010, 296.813

Achromatomaly
85, 2.107, 349.395

CSS Examples

Text

The CSS property to change the color of the text to CIELCh 85, 5.534, 357.452 is called "color". The color property can be set on classes, ids or directly on the HTML element.

This example shows how text in the color `rgb(223, 209, 213)` looks like.

```
.text, #text, p{  
    color:rgb(223, 209, 213)  
}
```

If you want to add a text shadow in that color use the text-shadow property, you can generate a text shadow directly with our [CSS Text Shadow Generator](#).

Here you see how black text with a 4 pixel rgb(223, 209, 213) colored shadow looks like.

```
.shadow{ text-shadow: 4px 4px 2px rgb(223, 209, 213) }
```

Border

The CSS property to change the border of an element to CIELCh 85, 5.534, 357.452 is called "border". The border property can be set on classes, ids or directly on the HTML element.

This example shows the color as border, it can be applied via the CSS property "border" or "border-color".

```
.border, #border, table{ border:4px solid rgb(223, 209, 213) }
```

If only the border color should be changed use the property `border-color`.

```
.border{ border-color:rgb(223, 209, 213) }
```

If you want to add a box shadow in that color use:

Here you see how a box with a 4 pixel `rgb(223, 209, 213)` colored shadow looks like.

```
.boxshadow{ -moz-box-shadow:4px 4px 4px  
4px rgb(223, 209, 213); -webkit-box-  
shadow:4px 4px 4px 4px rgb(223, 209, 213);  
box-shadow:4px 4px 4px 4px rgb(223, 209,  
213) }
```

Background

The CSS property to change the background color of an element to CIELCh 85, 5.534, 357.452 is called "background". The background property can be set on classes, ids or directly on the HTML element.

```
.background, #background, body{  
background: rgb(223, 209, 213) }
```

If only the background color should be changed can be used:

```
.background{ background-color: rgb(223,  
209, 213) }
```

This example shows the color as background, it is applied via the CSS property "background".

To optimize and compress your CSS code, you can use our [online CSS compressor and optimizer](#) based on csstidy. If you want to create a linear or radial gradient as background or border, check our [CSS Gradient Generator](#).

Hey! You found this booklet interesting? Support Converting Colors with the new Membership Option!

The pro membership hides all ads, plus gives you double the colors in the color bucket, and more awesome pro features!

[Learn more, Memberships starting at \\$2.50/m!](#)

**Follow me
on Twitter!**

@ConvertingColor