

Converting Colors

CIELCh(85, 7.271, 354.321)

Have a look what the booklet for
CIELCh(85, 7.271, 354.321) contains.

CIELCh(85, 7.300, 354.368)	3
<i>Conversions</i>	4
<i>Details</i>	6
<i>Harmonies</i>	12
<i>Previews</i>	21
<i>Color Blindness Simulation</i>	24
<i>CSS Examples</i>	27

Color

CIELCh(85, 7.300, 354.368)

Conversions

Conversions Part 1

Format	Color
Hex	E2D0D6
RGB	226, 208, 214
RGB Percent	89%, 82%, 84%
CMY	0.1145, 0.1850, 0.1615
CMYK	0.00, 0.08, 0.05, 0.11
HSL	340°, 24%, 85%
HSV	340°, 8%, 89%
XYZ	65.9312, 66.0070, 72.7611
YIQ	214.0660, 8.8020, 5.6820

Conversions

Conversions Part 2

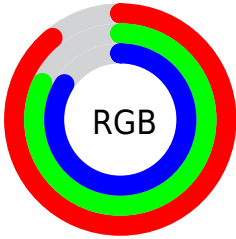
Format	Color
R _Y B	226, 208, 214
Decimal	14864598
CIE Lab	85.00, 7.26, -0.72
CIE LCh	85, 7.300, 354.368
Yxy	66.0070, 0.3221, 0.3225
Android (android.graphics.Color)	4293054678 (0xFFE2D0D6)
YUV	214.0660, -0.0325, 10.4661
Hunter-Lab	81.2447, 2.6769, 3.7724

Details

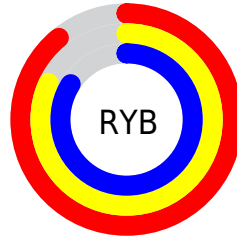
The CIELCh color $85, 7.300, 354.368$ is a light color, and the websafe version is hex `CCCCCC`. A complement of this color would be $88, 7.147, 173.042$, and the grayscale version is $86, 0.010, 296.813$.

A 20% lighter version of the original color is $100, 0.012, 296.813$, and $65, 7.142, 357.244$ is the 20% darker color. If you saturate the color by 10%, you get $79, 16.757, 355.470$, and if you desaturate by 10%, it is $91, 1.816, 173.805$.

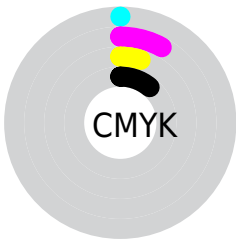
Distribution



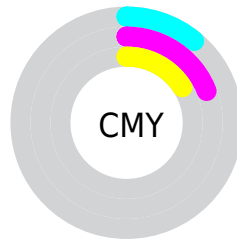
- Red (89%)
- Green (82%)
- Blue (84%)



- Red (89%)
- Yellow (82%)
- Blue (84%)



- Cyan (0%)
- Magenta (8%)
- Yellow (5%)
- Black (11%)



- Cyan (11%)
- Magenta (19%)
- Yellow (16%)


Brightness & Saturation Gradients

These gradients show how the CIELCh color 85, 7.300, 354.368 changes by changing the brightness by 10 percent. The first figure shows a shift by +10% for each color and the second figure -10%.

Similar to the brightness gradients but the following saturation gradients show a change of the CIELCh color 85, 7.300, 354.368 by changing the saturation by 10% instead.

 85, 7.300, 354.368

 85, 7.300, 354.368

 100, 7.300,
354.368

 75, 7.300, 354.368

 65, 7.300, 354.368

 55, 7.300, 354.368

 45, 7.300, 354.368

 35, 7.300, 354.368

 25, 7.300, 354.368

 15, 7.300, 354.368

 5, 7.300, 354.368

 0, 7.300, 354.368

85, 7.300, 354.368

85, 7.300, 354.368

79, 16.757,
355.470

91, 1.816, 173.805

73, 26.472,
356.702

97, 10.548,
172.753

68, 36.280,
358.150

98, 9.904, 198.847

63, 45.918,
359.896

58, 55.010, 2.051

54, 63.101, 4.761

51, 69.761, 8.203

49, 74.773, 12.540

48, 78.393, 17.777

Harmonies

Complementary

The Complementary color scheme is a pair of colors which are on the opposite of each other on the color wheel.



85, 7.300, 354.368



88, 7.147, 173.042

Rectangle

The Rectangle color scheme consists of four colors that form a rectangle on the color wheel.



85, 7.300, 354.368



85, 7.300, 44.368



85, 7.300, 174.368



85, 7.300, 224.368

Sweetspot

The Sweet Spot groups the original color and five complimentary colors.



85, 7.298, 354.377



99, 2.002, 353.604



85, 10.442, 314.982



53, 1.138, 353.581



0, 0.000, 0.000



53, 0.007, 296.813

Same Dimension

The Same Dimension uses a secret algorithm to generate beautiful new colors.



85, 7.298, 354.377



93, 10.148, 354.601



86, 5.735, 35.550



44, 5.189, 354.535



37, 65.374, 17.836



6, 25.433, 5.847

Inverse Universe

The Inverse Universe completely reimagines the original color for something new.



85, 7.298, 354.377



93, 10.148, 354.601



88, 5.453, 215.889



44, 5.189, 354.535



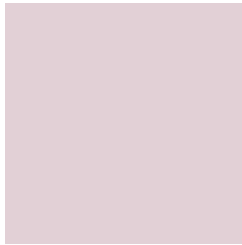
37, 65.374, 17.836



6, 25.433, 5.847

Previews

White Background



This preview shows how the CIELCh color 85, 7.300, 354.368 looks on a white background.

Color Contrast Check

Large Text (above 18pt) WCAG AA × Fail

Any Text WCAG AA × Fail

Large Text (above 18pt) WCAG AAA × Fail

Any Text WCAG AAA × Fail

Black Background



This preview shows how the CIE LCh color 85, 7.300, 354.368 looks on a black background.

Color Contrast Check

Large Text (above 18pt) WCAG AA ✓ Pass

Any Text WCAG AA ✓ Pass

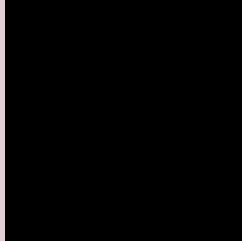
Large Text (above 18pt) WCAG AAA ✓ Pass

Any Text WCAG AAA ✓ Pass

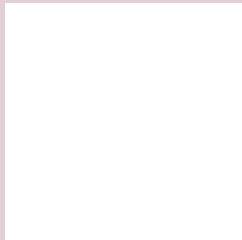
If you want to check with other color combinations, try the [Color Contrast Checker](#).

CIELCh 85, 7.300, 354.368

Background



This preview shows how black text looks on a background with the CIELCh color 85, 7.300, 354.368.

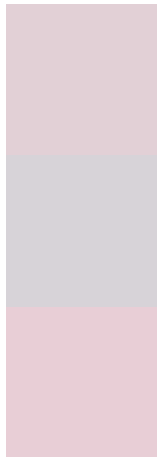


This preview shows how white text looks on a background with the CIELCh color 85, 7.300, 354.368.

Color Blindness Simulation

Color vision deficiency is a very complex topic, and I could not describe the different causes any better than Wikipedia does, so if you want to learn more, you should check out their [article about color blindness](#).

Dichromacy



Original Color

85, 7.300, 354.368

Protanopia

85, 3.021, 318.840

Deuteranopia

85, 10.419, 356.461



Tritanopia
85, 11.748, 330.741

Trichromacy



Original Color
85, 7.300, 354.368

Protanomaly
85, 4.211, 340.996

Deuteranomaly
85, 9.194, 356.561

Tritanomaly
85, 9.982, 336.975

Monochromacy



Original Color
85, 7.300, 354.368

Achromatopsia
86, 0.010, 296.813

Achromatomaly
85, 2.428, 353.738

CSS Examples

Text

The CSS property to change the color of the text to CIELCh 85, 7.300, 354.368 is called "color". The color property can be set on classes, ids or directly on the HTML element.

This example shows how text in the color `rgb(226, 208, 214)` looks like.

```
.text, #text, p{  
    color:rgb(226, 208, 214)  
}
```

If you want to add a text shadow in that color use the text-shadow property, you can generate a text shadow directly with our [CSS Text Shadow Generator](#).

Here you see how black text with a 4 pixel rgb(226, 208, 214) colored shadow looks like.

```
.shadow{ text-shadow: 4px 4px 2px rgb(226, 208, 214) }
```

Border

The CSS property to change the border of an element to CIELCh 85, 7.300, 354.368 is called "border". The border property can be set on classes, ids or directly on the HTML element.

This example shows the color as border, it can be applied via the CSS property "border" or "border-color".

```
.border, #border, table{ border:4px solid rgb(226, 208, 214) }
```

If only the border color should be changed use the property `border-color`.

```
.border{ border-color:rgb(226, 208, 214) }
```

If you want to add a box shadow in that color use:

Here you see how a box with a 4 pixel `rgb(226, 208, 214)` colored shadow looks like.

```
.boxshadow{ -moz-box-shadow:4px 4px 4px  
4px rgb(226, 208, 214); -webkit-box-  
shadow:4px 4px 4px 4px rgb(226, 208, 214);  
box-shadow:4px 4px 4px 4px rgb(226, 208,  
214) }
```

Background

The CSS property to change the background color of an element to CIELCh 85, 7.300, 354.368 is called "background". The background property can be set on classes, ids or directly on the HTML element.

```
.background, #background, body{  
background: rgb(226, 208, 214) }
```

If only the background color should be changed can be used:

```
.background{ background-color: rgb(226,  
208, 214) }
```

This example shows the color as background, it is applied via the CSS property "background".

To optimize and compress your CSS code, you can use our [online CSS compressor and optimizer](#) based on csstidy. If you want to create a linear or radial gradient as background or border, check our [CSS Gradient Generator](#).

Hey! You found this booklet interesting? Support Converting Colors with the new Membership Option!

The pro membership hides all ads, plus gives you double the colors in the color bucket, and more awesome pro features!

[Learn more, Memberships starting at \\$2.50/m!](#)

**Follow me
on Twitter!**

@ConvertingColor