

# Converting Colors

CIELCh(85, 8.208, 352.637)

Have a look what the booklet for  
CIELCh(85, 8.208, 352.637) contains.

<b>CIELCh(85, 8.192, 353.353)</b> .....	3
<i><b>Conversions</b></i> .....	4
<i><b>Details</b></i> .....	6
<i><b>Harmonies</b></i> .....	12
<i><b>Previews</b></i> .....	21
<i><b>Color Blindness Simulation</b></i> .....	24
<i><b>CSS Examples</b></i> .....	27

# **Color**

**CIELCh(85, 8.192, 353.353)**

# Conversions

## Conversions Part 1

<b>Format</b>	<b>Color</b>
Hex	E3CFD6
RGB	227, 207, 214
RGB Percent	89%, 81%, 84%
CMY	0.1087, 0.1871, 0.1597
CMYK	0.00, 0.09, 0.06, 0.11
HSL	339°, 27%, 85%
HSV	339°, 9%, 89%
XYZ	66.3217, 66.0070, 73.0509
YIQ	213.7780, 9.6730, 6.4170

# Conversions

## Conversions Part 2

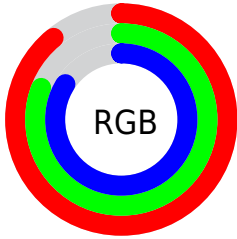
<b>Format</b>	<b>Color</b>
R <sub>Y</sub> B	227, 207, 214
Decimal	14929878
CIE Lab	85.00, 8.14, -0.95
CIE LCh	85, 8.192, 353.353
Yxy	66.0070, 0.3229, 0.3214
Android (android.graphics.Color)	4293119958 (0xFFE3CFD6)
YUV	213.7780, 0.1094, 11.5957
Hunter-Lab	81.2447, 3.5349, 3.5609

# Details

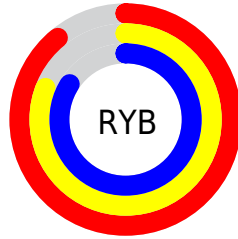
The CIELCh color  $85, 8.192, 353.353$  is a light color, and the websafe version is hex `CCCCCC`. A complement of this color would be  $89, 8.015, 171.857$ , and the grayscale version is  $86, 0.010, 296.813$ .

A 20% lighter version of the original color is  $100, 0.012, 296.813$ , and  $65, 8.078, 355.865$  is the 20% darker color. If you saturate the color by 10%, you get  $79, 17.797, 354.450$ , and if you desaturate by 10%, it is  $91, 1.088, 172.962$ .

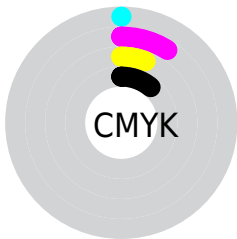
# Distribution



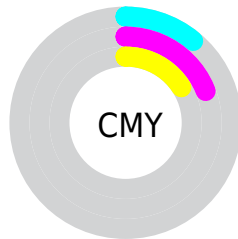
- Red (89%)
- Green (81%)
- Blue (84%)



- Red (89%)
- Yellow (81%)
- Blue (84%)



- Cyan (0%)
- Magenta (9%)
- Yellow (6%)
- Black (11%)



- Cyan (11%)
- Magenta (19%)
- Yellow (16%)

# Brightness & Saturation Gradients

These gradients show how the CIELCh color 85, 8.192, 353.353 changes by changing the brightness by 10 percent. The first figure shows a shift by +10% for each color and the second figure -10%.

Similar to the brightness gradients but the following saturation gradients show a change of the CIELCh color 85, 8.192, 353.353 by changing the saturation by 10% instead.



85, 8.192, 353.353

85, 8.192, 353.353

100, 8.192,  
353.353

75, 8.192, 353.353

65, 8.192, 353.353

55, 8.192, 353.353

45, 8.192, 353.353

35, 8.192, 353.353

25, 8.192, 353.353

15, 8.192, 353.353

5, 8.192, 353.353

0, 8.192, 353.353

85, 8.192, 353.353

85, 8.192, 353.353

79, 17.797,  
354.450

91, 1.088, 172.962

73, 27.634,  
355.681

97, 9.993, 171.723

68, 37.524,  
357.127

98, 9.420, 198.881

63, 47.186,  
358.869

58, 56.225, 1.016

54, 64.173, 3.716

51, 70.594, 7.145

49, 75.288, 11.471

48, 78.596, 16.676



# Harmonies

# Complementary

The Complementary color scheme is a pair of colors which are on the opposite of each other on the color wheel.



85, 8.192, 353.353



89, 8.015, 171.857

# Rectangle

The Rectangle color scheme consists of four colors that form a rectangle on the color wheel.



85, 8.192, 353.353



85, 8.192, 43.353



85, 8.192, 173.353



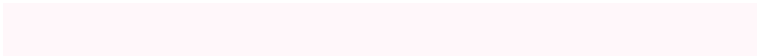
85, 8.192, 223.353

# Sweetspot

The Sweet Spot groups the original color and five complimentary colors.



85, 8.190, 353.361



98, 3.035, 352.691



85, 11.555, 314.480



52, 2.303, 352.804



0, 0.000, 0.000



53, 0.007, 296.813





# Same Dimension

The Same Dimension uses a secret algorithm to generate beautiful new colors.



85, 8.190, 353.361



93, 11.284, 353.601



86, 6.464, 33.793



45, 5.334, 353.431



38, 65.701, 16.336



7, 26.741, 5.563



# Inverse Universe

The Inverse Universe completely reimagines the original color for something new.



85, 8.190, 353.361



93, 11.284, 353.601



88, 6.110, 213.988



45, 5.334, 353.431



38, 65.701, 16.336

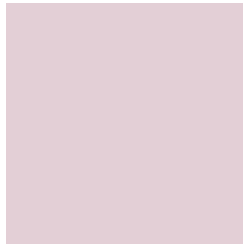


7, 26.741, 5.563



# Previews

## White Background



This preview shows how the CIELCh color 85, 8.192, 353.353 looks on a white background.

## Color Contrast Check

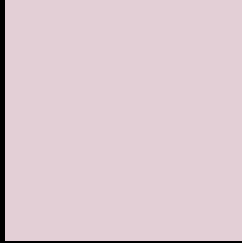
Large Text (above 18pt) WCAG AA × Fail

Any Text WCAG AA × Fail

Large Text (above 18pt) WCAG AAA × Fail

Any Text WCAG AAA × Fail

# Black Background



This preview shows how the CIE LCh color 85, 8.192, 353.353 looks on a black background.

## Color Contrast Check

Large Text (above 18pt) WCAG AA ✓ Pass

Any Text WCAG AA ✓ Pass

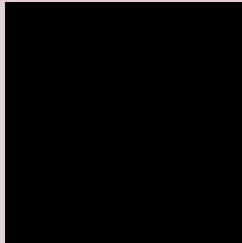
Large Text (above 18pt) WCAG AAA ✓ Pass

Any Text WCAG AAA ✓ Pass

If you want to check with other color combinations, try the [Color Contrast Checker](#).

# CIELCh 85, 8.192, 353.353

## Background



This preview shows how black text looks on a background with the CIELCh color 85, 8.192, 353.353.



This preview shows how white text looks on a background with the CIELCh color 85, 8.192, 353.353.

# Color Blindness Simulation

Color vision deficiency is a very complex topic, and I could not describe the different causes any better than Wikipedia does, so if you want to learn more, you should check out their [article about color blindness](#).

## Dichromacy



### Original Color

85, 8.192, 353.353


### Protanopia

85, 3.492, 314.731

### Deuteranopia

85, 10.630, 353.862





**Tritanopia**  
85, 11.601, 333.819

# Trichromacy



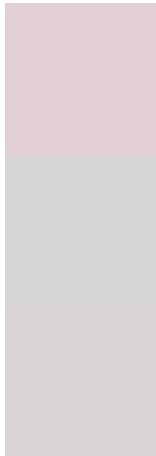
**Original Color**  
85, 8.192, 353.353

**Protanomaly**  
85, 4.559, 335.870

**Deuteranomaly**  
85, 9.974, 351.901

**Tritanomaly**  
85, 10.530, 339.760

# Monochromacy



**Original Color**  
85, 8.192, 353.353

**Achromatopsia**  
86, 0.010, 296.813

**Achromatomaly**  
86, 2.760, 357.065

# CSS Examples

## Text

The CSS property to change the color of the text to CIELCh 85, 8.192, 353.353 is called "color". The color property can be set on classes, ids or directly on the HTML element.

This example shows how text in the color `rgb(227, 207, 214)` looks like.

```
.text, #text, p{  
    color:rgb(227, 207, 214)  
}
```

If you want to add a text shadow in that color use the text-shadow property, you can generate a text shadow directly with our [CSS Text Shadow Generator](#).

Here you see how black text with a 4 pixel rgb(227, 207, 214) colored shadow looks like.

```
.shadow{ text-shadow: 4px 4px 2px rgb(227, 207, 214) }
```

## Border

The CSS property to change the border of an element to CIELCh 85, 8.192, 353.353 is called "border". The border property can be set on classes, ids or directly on the HTML element.

This example shows the color as border, it can be applied via the CSS property "border" or "border-color".

```
.border, #border, table{ border:4px solid rgb(227, 207, 214) }
```

If only the border color should be changed use the property `border-color`.

```
.border{ border-color:rgb(227, 207, 214) }
```

If you want to add a box shadow in that color use:

Here you see how a box with a 4 pixel `rgb(227, 207, 214)` colored shadow looks like.

```
.boxshadow{ -moz-box-shadow:4px 4px 4px  
4px rgb(227, 207, 214); -webkit-box-  
shadow:4px 4px 4px 4px rgb(227, 207, 214);  
box-shadow:4px 4px 4px 4px rgb(227, 207,  
214) }
```

# Background

The CSS property to change the background color of an element to CIELCh 85, 8.192, 353.353 is called "background". The background property can be set on classes, ids or directly on the HTML element.

```
.background, #background, body{  
background: rgb(227, 207, 214) }
```

If only the background color should be changed can be used:

```
.background{ background-color: rgb(227,  
207, 214) }
```

This example shows the color as background, it is applied via the CSS property "background".

To optimize and compress your CSS code, you can use our [online CSS compressor and optimizer](#) based on csstidy. If you want to create a linear or radial gradient as background or border, check our [CSS Gradient Generator](#).

Hey! You found this booklet interesting? Support Converting Colors with the new Membership Option!

The pro membership hides all ads, plus gives you double the colors in the color bucket, and more awesome pro features!

**[Learn more, Memberships starting at \\$2.50/m!](#)**

**Follow me  
on Twitter!**

@ConvertingColor