

Converting Colors

CIELCh(85, 8.514, 19.979)

Have a look what the booklet for
CIELCh(85, 8.514, 19.979) contains.

CIELCh(85, 8.514, 19.979)	3
<i>Conversions</i>	4
<i>Details</i>	6
<i>Harmonies</i>	11
<i>Previews</i>	20
<i>Color Blindness Simulation</i>	23
<i>CSS Examples</i>	26

Color

CIELCh(85, 8.514, 19.979)

Conversions

Conversions Part 1

Format	Color
Hex	E6CFCF
RGB	230, 207, 207
RGB Percent	90%, 81%, 81%
CMY	0.0977, 0.1879, 0.1879
CMYK	0.00, 0.10, 0.10, 0.10
HSL	0°, 32%, 86%
HSV	0°, 10%, 90%
XYZ	66.2610, 66.0070, 68.3284
YIQ	213.8770, 13.7080, 4.8760

Conversions

Conversions Part 2

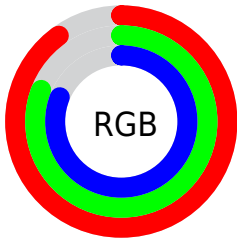
Format	Color
R _Y B	230, 207, 207
Decimal	15126479
CIE Lab	85.00, 8.00, 2.91
CIE LCh	85, 8.514, 19.979
Yxy	66.0070, 0.3303, 0.3291
Android (android.graphics.Color)	4293316559 (0xFFE6CFCF)
YUV	213.8770, -3.3904, 14.1399
Hunter-Lab	81.2447, 3.4016, 7.0072

Details

The CIELCh color **85, 8.514, 19.979** is a light color, and the websafe version is hex **CCCCCC**. A complement of this color would be **90, 7.989, 198.952**, and the grayscale version is **86, 0.010, 296.813**.

A 20% lighter version of the original color is **100, 0.012, 296.813**, and **65, 8.250, 20.127** is the 20% darker color. If you saturate the color by 10%, you get **79, 17.714, 20.854**, and if you desaturate by 10%, it is **91, 0.011, 284.162**.

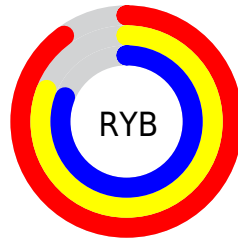
Distribution



Red (90%)

Green (81%)

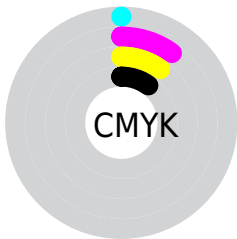
Blue (81%)



Red (90%)

Yellow (81%)

Blue (81%)

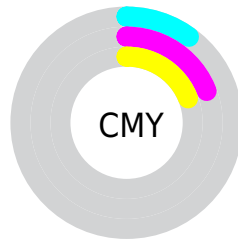


Cyan (0%)

Magenta (10%)

Yellow (10%)

Black (10%)



Cyan (10%)

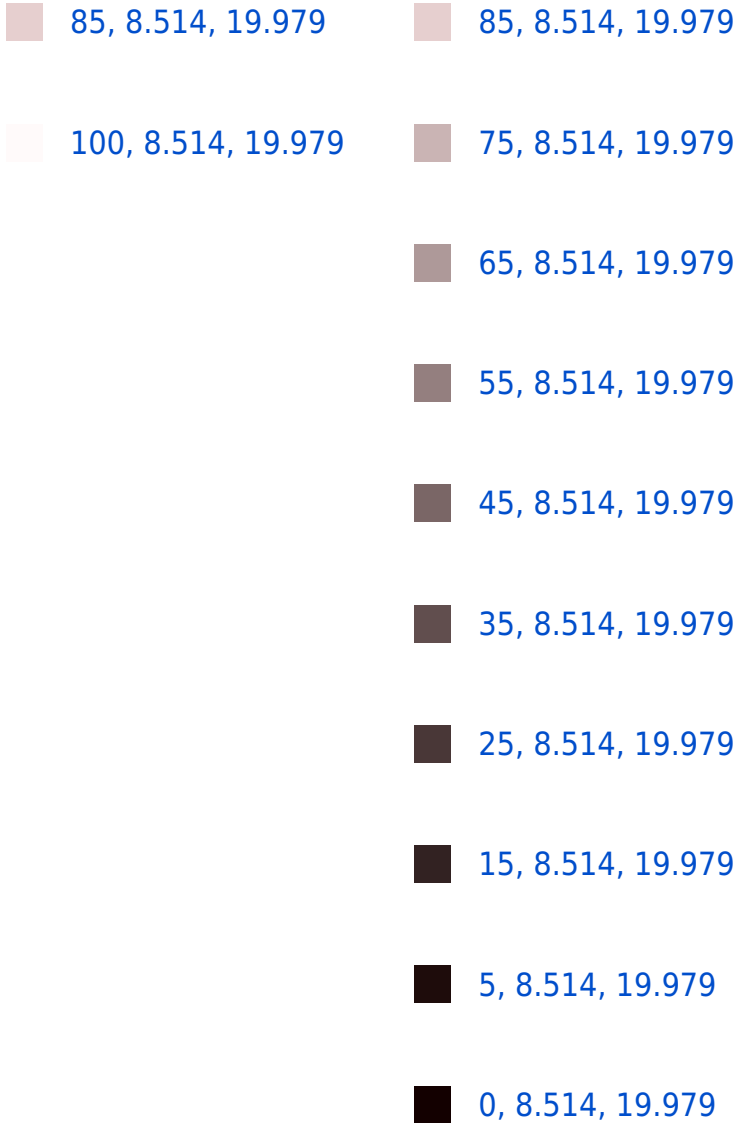
Magenta (19%)

Yellow (19%)

Brightness & Saturation Gradients

These gradients show how the CIELCh color 85, 8.514, 19.979 changes by changing the brightness by 10 percent. The first figure shows a shift by +10% for each color and the second figure -10%.

Similar to the brightness gradients but the following saturation gradients show a change of the CIELCh color 85, 8.514, 19.979 by changing the saturation by 10% instead.



85, 8.514, 19.979

85, 8.514, 19.979

79, 17.714, 20.854

91, 0.011, 284.162

73, 27.609, 21.940

98, 7.868, 199.004

67, 38.145, 23.352

98, 8.495, 198.946

62, 49.178, 25.200

57, 60.455, 27.593

54, 71.609, 30.599

51, 82.116, 34.111

49, 90.972, 37.566

48, 96.747, 40.001

Harmonies

Complementary

The Complementary color scheme is a pair of colors which are on the opposite of each other on the color wheel.



85, 8.514, 19.979



90, 7.989, 198.952

Rectangle

The Rectangle color scheme consists of four colors that form a rectangle on the color wheel.



85, 8.514, 19.979



85, 8.514, 69.979



85, 8.514, 199.979



85, 8.514, 249.979

Sweetspot

The Sweet Spot groups the original color and five complimentary colors.



85, 8.512, 19.993



98, 2.702, 19.358



86, 14.654, 324.972



52, 2.054, 19.459



0, 0.000, 0.000



53, 0.007, 296.813

Same Dimension

The Same Dimension uses a secret algorithm to generate beautiful new colors.



85, 8.512, 19.993



92, 11.198, 20.159



88, 7.328, 74.142



45, 4.816, 19.950



37, 79.982, 39.974



6, 27.101, 21.767

Inverse Universe

The Inverse Universe completely reimagines the original color for something new.



90, 7.989, 198.952



98, 10.367, 198.831



87, 7.156, 256.788



47, 4.536, 198.985



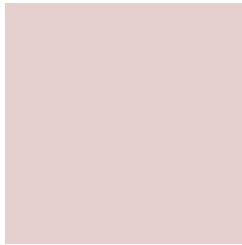
66, 38.336, 196.415



18, 16.088, 196.410

Previews

White Background



This preview shows how the CIELCh color 85, 8.514, 19.979 looks on a white background.

Color Contrast Check

Large Text (above 18pt) WCAG AA × Fail

Any Text WCAG AA × Fail

Large Text (above 18pt) WCAG AAA × Fail

Any Text WCAG AAA × Fail

Black Background



This preview shows how the CIE LCh color 85, 8.514, 19.979 looks on a black background.

Color Contrast Check

Large Text (above 18pt) WCAG AA ✓ Pass

Any Text WCAG AA ✓ Pass

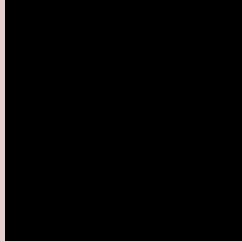
Large Text (above 18pt) WCAG AAA ✓ Pass

Any Text WCAG AAA ✓ Pass

If you want to check with other color combinations, try the [Color Contrast Checker](#).

CIELCh 85, 8.514, 19.979

Background



This preview shows how black text looks on a background with the CIELCh color 85, 8.514, 19.979.



This preview shows how white text looks on a background with the CIELCh color 85, 8.514, 19.979.

Color Blindness Simulation

Color vision deficiency is a very complex topic, and I could not describe the different causes any better than Wikipedia does, so if you want to learn more, you should check out their [article about color blindness](#).

Dichromacy



Original Color

85, 8.514, 19.979

Protanopia

85, 2.241, 32.830

Deuteranopia

85, 11.192, 14.861



Tritanopia
85, 12.921, 339.847

Trichromacy



Original Color
85, 8.514, 19.979

Protanomaly
85, 4.426, 26.391

Deuteranomaly
85, 10.030, 17.127

Tritanomaly
85, 10.541, 350.364

Monochromacy



Original Color
85, 8.514, 19.979

Achromatopsia
86, 0.010, 296.813

Achromatomaly
85, 3.282, 19.472

CSS Examples

Text

The CSS property to change the color of the text to CIELCh 85, 8.514, 19.979 is called "color". The color property can be set on classes, ids or directly on the HTML element.

This example shows how text in the color `rgb(230, 207, 207)` looks like.

```
.text, #text, p{  
    color:rgb(230, 207, 207)  
}
```

If you want to add a text shadow in that color use the text-shadow property, you can generate a text shadow directly with our [CSS Text Shadow Generator](#).

Here you see how black text with a 4 pixel rgb(230, 207, 207) colored shadow looks like.

```
.shadow{ text-shadow: 4px 4px 2px rgb(230, 207, 207) }
```

Border

The CSS property to change the border of an element to CIELCh 85, 8.514, 19.979 is called "border". The border property can be set on classes, ids or directly on the HTML element.

This example shows the color as border, it can be applied via the CSS property "border" or "border-color".

```
.border, #border, table{ border:4px solid rgb(230, 207, 207) }
```

If only the border color should be changed use the property border-color.

```
.border{ border-color:rgb(230, 207, 207) }
```

If you want to add a box shadow in that color use:

Here you see how a box with a 4 pixel rgb(230, 207, 207) colored shadow looks like.

```
.boxshadow{ -moz-box-shadow:4px 4px 4px  
4px rgb(230, 207, 207); -webkit-box-  
shadow:4px 4px 4px 4px rgb(230, 207, 207);  
box-shadow:4px 4px 4px 4px rgb(230, 207,  
207) }
```

Background

The CSS property to change the background color of an element to CIELCh 85, 8.514, 19.979 is called "background". The background property can be set on classes, ids or directly on the HTML element.

```
.background, #background, body{  
background: rgb(230, 207, 207) }
```

If only the background color should be changed can be used:

```
.background{ background-color: rgb(230,  
207, 207) }
```

This example shows the color as background, it is applied via the CSS property "background".

To optimize and compress your CSS code, you can use our [online CSS compressor and optimizer](#) based on csstidy. If you want to create a linear or radial gradient as background or border, check our [CSS Gradient Generator](#).

Hey! You found this booklet interesting? Support Converting Colors with the new Membership Option!

The pro membership hides all ads, plus gives you double the colors in the color bucket, and more awesome pro features!

[Learn more, Memberships starting at \\$2.50/m!](#)

**Follow me
on Twitter!**

@ConvertingColor