

Converting Colors

CIELCh(85, 8.771, 61.213)

Have a look what the booklet for
CIELCh(85, 8.771, 61.213) contains.

CIELCh(85, 8.877, 60.104)	3
<i>Conversions</i>	4
<i>Details</i>	6
<i>Harmonies</i>	11
<i>Previews</i>	20
<i>Color Blindness Simulation</i>	23
<i>CSS Examples</i>	26

Color

CIELCh(85, 8.877, 60.104)

Conversions

Conversions Part 1

Format	Color
Hex	E3D1C6
RGB	227, 209, 198
RGB Percent	89%, 82%, 78%
CMY	0.1098, 0.1804, 0.2235
CMYK	0.00, 0.08, 0.13, 0.11
HSL	23°, 34%, 83%
HSV	23°, 13%, 89%
XYZ	64.6701, 66.0070, 62.7567
YIQ	213.1280, 14.2590, 0.3950

Conversions

Conversions Part 2

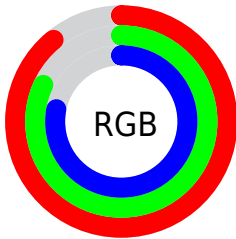
Format	Color
RYB	227, 216, 198
Decimal	14930374
CIELab	85.00, 4.42, 7.70
CIELCh	85, 8.877, 60.104
Yxy	66.0070, 0.3343, 0.3412
Android (android.graphics.Color)	4293120454 (0xFFE3D1C6)
YUV	213.1280, -7.4581, 12.1657
Hunter-Lab	81.2447, -0.0938, 11.0733

Details

The CIELCh color $85, 8.877, 60.104$ is a light color, and the websafe version is hex `CCCCCC`. A complement of this color would be $85, 8.387, 242.850$, and the grayscale version is $85, 0.010, 296.813$.

A 20% lighter version of the original color is $100, 0.012, 296.813$, and $65, 8.844, 63.137$ is the 20% darker color. If you saturate the color by 10%, you get $81, 16.365, 59.219$, and if you desaturate by 10%, it is $89, 1.863, 60.860$.

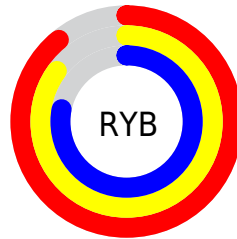
Distribution



Red (89%)

Green (82%)

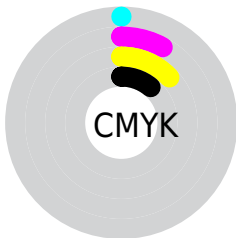
Blue (78%)



Red (89%)

Yellow (85%)

Blue (78%)

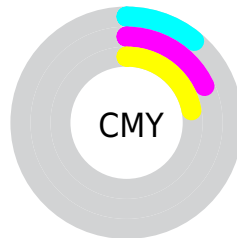


Cyan (0%)

Magenta (8%)

Yellow (13%)

Black (11%)



Cyan (11%)

Magenta (18%)

Yellow (22%)

Brightness & Saturation Gradients

These gradients show how the CIELCh color 85, 8.877, 60.104 changes by changing the brightness by 10 percent. The first figure shows a shift by +10% for each color and the second figure -10%.

Similar to the brightness gradients but the following saturation gradients show a change of the CIELCh color 85, 8.877, 60.104 by changing the saturation by 10% instead.



85, 8.877, 60.104

85, 8.877, 60.104

81, 16.365, 59.219

89, 1.863, 60.860

77, 24.369, 58.340

93, 4.726, 242.200

73, 32.915, 57.509

97, 8.420, 212.133

70, 41.995, 56.733

98, 9.515, 198.874

66, 51.526, 55.999

63, 61.274, 55.243

60, 70.696, 54.294

57, 78.724, 52.786

55, 83.272, 51.306

Harmonies

Complementary

The Complementary color scheme is a pair of colors which are on the opposite of each other on the color wheel.



85, 8.877, 60.104



85, 8.387, 242.850

Rectangle

The Rectangle color scheme consists of four colors that form a rectangle on the color wheel.



85, 8.877, 60.104



85, 8.877, 110.104



85, 8.877, 240.104



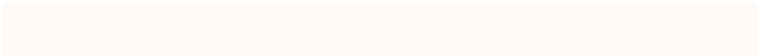
85, 8.877, 290.104

Sweetspot

The Sweet Spot groups the original color and five complimentary colors.



85, 8.877, 60.121



98, 2.966, 60.825



83, 14.351, 338.033



52, 2.113, 60.782



0, 0.000, 0.000



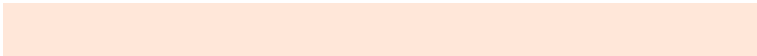
53, 0.007, 296.813

Same Dimension

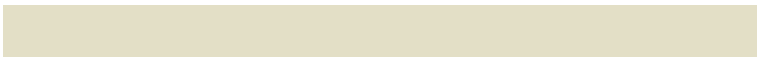
The Same Dimension uses a secret algorithm to generate beautiful new colors.



85, 8.877, 60.121



93, 11.543, 59.912



89, 13.109, 102.743



46, 3.938, 60.414



44, 69.199, 51.912



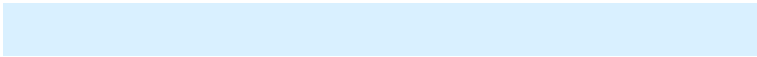
10, 21.443, 47.916

Inverse Universe

The Inverse Universe completely reimagines the original color for something new.



85, 8.387, 242.850



94, 10.781, 243.136



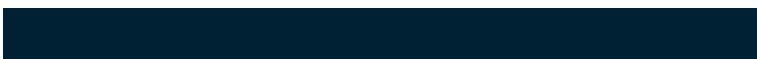
82, 13.379, 285.637



46, 3.782, 242.473



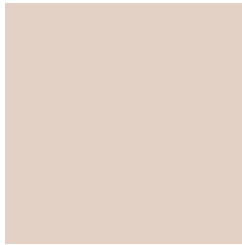
45, 43.190, 269.271



11, 16.257, 259.790

Previews

White Background



This preview shows how the CIELCh color 85, 8.877, 60.104 looks on a white background.

Color Contrast Check

Large Text (above 18pt) WCAG AA × Fail

Any Text WCAG AA × Fail

Large Text (above 18pt) WCAG AAA × Fail

Any Text WCAG AAA × Fail

Black Background



This preview shows how the CIE LCh color 85, 8.877, 60.104 looks on a black background.

Color Contrast Check

Large Text (above 18pt) WCAG AA ✓ Pass

Any Text WCAG AA ✓ Pass

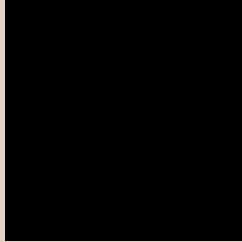
Large Text (above 18pt) WCAG AAA ✓ Pass

Any Text WCAG AAA ✓ Pass

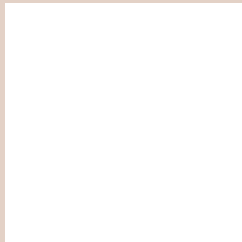
If you want to check with other color combinations, try the [Color Contrast Checker](#).

CIELCh 85, 8.877, 60.104

Background



This preview shows how black text looks on a background with the CIELCh color 85, 8.877, 60.104.

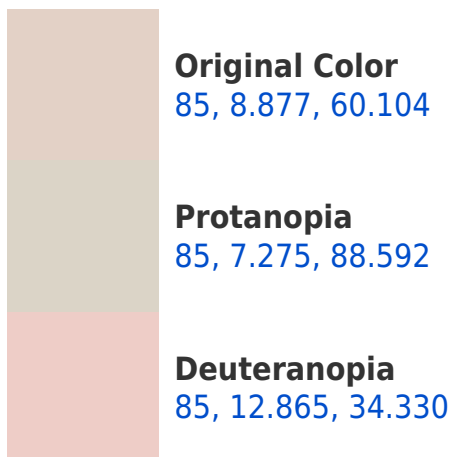


This preview shows how white text looks on a background with the CIELCh color 85, 8.877, 60.104.

Color Blindness Simulation

Color vision deficiency is a very complex topic, and I could not describe the different causes any better than Wikipedia does, so if you want to learn more, you should check out their [article about color blindness](#).

Dichromacy





Tritanopia
85, 12.737, 335.839

Trichromacy



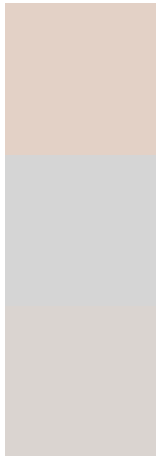
Original Color
85, 8.877, 60.104

Protanomaly
85, 7.493, 76.400

Deuteranomaly
85, 11.174, 39.179

Tritanomaly
85, 9.202, 356.565

Monochromacy



Original Color
85, 8.877, 60.104

Achromatopsia
85, 0.010, 296.813

Achromatomaly
85, 3.017, 63.274

CSS Examples

Text

The CSS property to change the color of the text to CIELCh 85, 8.877, 60.104 is called "color". The color property can be set on classes, ids or directly on the HTML element.

This example shows how text in the color `rgb(227, 209, 198)` looks like.

```
.text, #text, p{  
    color:rgb(227, 209, 198)  
}
```

If you want to add a text shadow in that color use the text-shadow property, you can generate a text shadow directly with our [CSS Text Shadow Generator](#).

Here you see how black text with a 4 pixel rgb(227, 209, 198) colored shadow looks like.

```
.shadow{ text-shadow: 4px 4px 2px rgb(227, 209, 198) }
```

Border

The CSS property to change the border of an element to CIELCh 85, 8.877, 60.104 is called "border". The border property can be set on classes, ids or directly on the HTML element.

This example shows the color as border, it can be applied via the CSS property "border" or "border-color".

```
.border, #border, table{ border:4px solid rgb(227, 209, 198) }
```

If only the border color should be changed use the property `border-color`.

```
.border{ border-color:rgb(227, 209, 198) }
```

If you want to add a box shadow in that color use:

Here you see how a box with a 4 pixel `rgb(227, 209, 198)` colored shadow looks like.

```
.boxshadow{ -moz-box-shadow:4px 4px 4px  
4px rgb(227, 209, 198); -webkit-box-  
shadow:4px 4px 4px 4px rgb(227, 209, 198);  
box-shadow:4px 4px 4px 4px rgb(227, 209,  
198) }
```

Background

The CSS property to change the background color of an element to CIELCh 85, 8.877, 60.104 is called "background". The background property can be set on classes, ids or directly on the HTML element.

```
.background, #background, body{  
background: rgb(227, 209, 198) }
```

If only the background color should be changed can be used:

```
.background{ background-color: rgb(227,  
209, 198) }
```

This example shows the color as background, it is applied via the CSS property "background".

To optimize and compress your CSS code, you can use our [online CSS compressor and optimizer](#) based on csstidy. If you want to create a linear or radial gradient as background or border, check our [CSS Gradient Generator](#).

Hey! You found this booklet interesting? Support Converting Colors with the new Membership Option!

The pro membership hides all ads, plus gives you double the colors in the color bucket, and more awesome pro features!

[Learn more, Memberships starting at \\$2.50/m!](#)

**Follow me
on Twitter!**

@ConvertingColor