

Converting Colors

CIELCh(85, 9.204, 20.217)

Have a look what the booklet for
CIELCh(85, 9.204, 20.217) contains.

CIELCh(85, 8.891, 20.010)	3
<i>Conversions</i>	4
<i>Details</i>	6
<i>Harmonies</i>	11
<i>Previews</i>	20
<i>Color Blindness Simulation</i>	23
<i>CSS Examples</i>	26

Color

CIELCh(85, 8.891, 20.010)

Conversions

Conversions Part 1

Format	Color
Hex	E7CFCF
RGB	231, 207, 207
RGB Percent	91%, 81%, 81%
CMY	0.0948, 0.1888, 0.1889
CMYK	0.00, 0.10, 0.10, 0.09
HSL	0°, 33%, 86%
HSV	0°, 10%, 91%
XYZ	66.4193, 66.0070, 68.1689
YIQ	214.1760, 14.3040, 5.0880

Conversions

Conversions Part 2

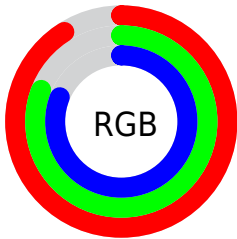
Format	Color
R _Y B	231, 207, 207
Decimal	15192015
CIE Lab	85.00, 8.35, 3.04
CIE LCh	85, 8.891, 20.010
Yxy	66.0070, 0.3311, 0.3291
Android (android.graphics.Color)	4293382095 (0xFFE7CFCF)
YUV	214.1760, -3.5378, 14.7546
Hunter-Lab	81.2447, 3.7493, 7.1236

Details

The CIELCh color **85, 8.891, 20.010** is a light color, and the websafe version is hex **CCCCCC**. A complement of this color would be **90, 8.321, 198.927**, and the grayscale version is **86, 0.010, 296.813**.

A 20% lighter version of the original color is **100, 0.012, 296.813**, and **65, 8.651, 20.168** is the 20% darker color. If you saturate the color by 10%, you get **79, 18.143, 20.892**, and if you desaturate by 10%, it is **91, 0.326, 17.564**.

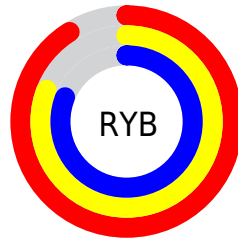
Distribution



Red (91%)

Green (81%)

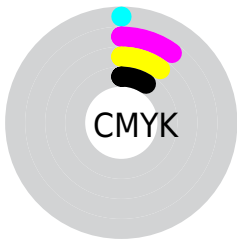
Blue (81%)



Red (91%)

Yellow (81%)

Blue (81%)

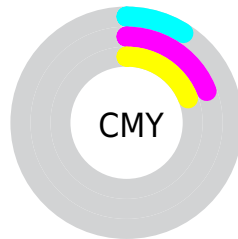


Cyan (0%)

Magenta (10%)

Yellow (10%)

Black (9%)



Cyan (9%)

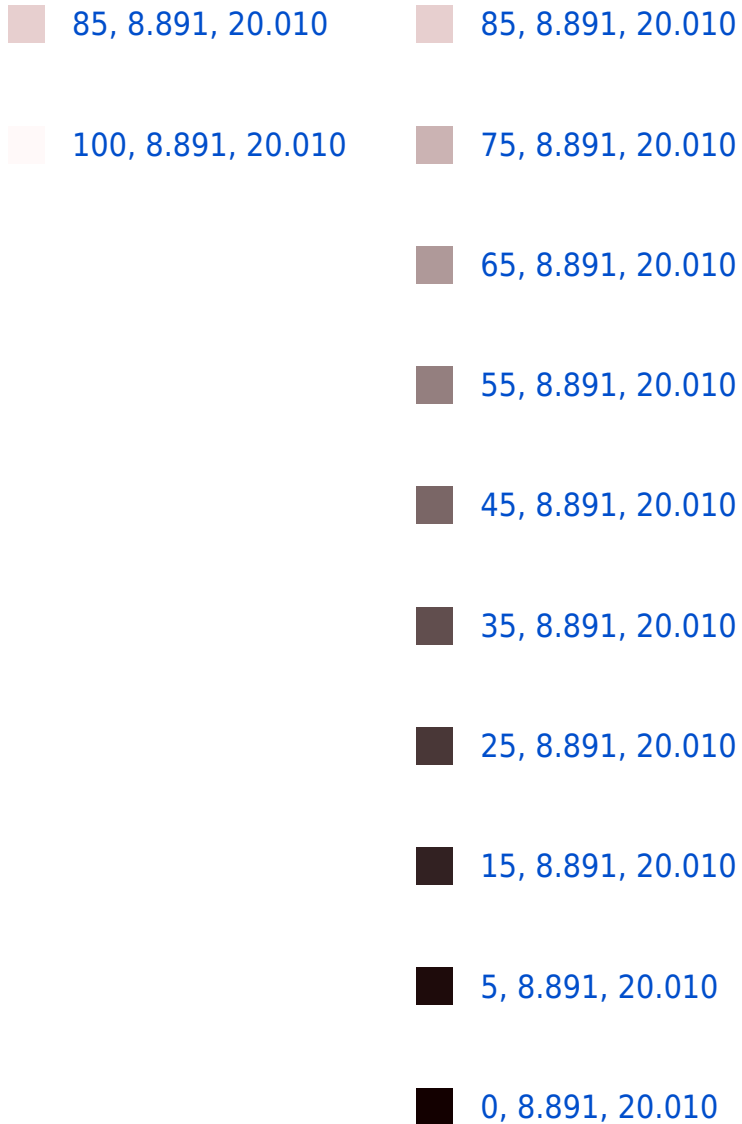
Magenta (19%)

Yellow (19%)

Brightness & Saturation Gradients

These gradients show how the CIELCh color 85, 8.891, 20.010 changes by changing the brightness by 10 percent. The first figure shows a shift by +10% for each color and the second figure -10%.

Similar to the brightness gradients but the following saturation gradients show a change of the CIELCh color 85, 8.891, 20.010 by changing the saturation by 10% instead.



85, 8.891, 20.010

85, 8.891, 20.010

79, 18.143, 20.892

91, 0.326, 17.564

73, 28.093, 21.989

98, 7.587, 199.024

67, 38.681, 23.417

98, 8.243, 198.965

62, 49.759, 25.285

57, 61.070, 27.703

54, 72.239, 30.735

51, 82.730, 34.260

49, 91.504, 37.692

48, 96.989, 40.001

Harmonies

Complementary

The Complementary color scheme is a pair of colors which are on the opposite of each other on the color wheel.



85, 8.891, 20.010



90, 8.321, 198.927

Rectangle

The Rectangle color scheme consists of four colors that form a rectangle on the color wheel.



85, 8.891, 20.010



85, 8.891, 70.010



85, 8.891, 200.010



85, 8.891, 250.010

Sweetspot

The Sweet Spot groups the original color and five complimentary colors.



85, 8.889, 20.024



98, 2.702, 19.356



86, 15.282, 324.995



52, 2.054, 19.458



0, 0.000, 0.000



53, 0.007, 296.813

Same Dimension

The Same Dimension uses a secret algorithm to generate beautiful new colors.



85, 8.889, 20.024



92, 11.198, 20.158



88, 7.648, 74.095



45, 4.816, 19.948



37, 79.982, 39.973



6, 27.102, 21.766

Inverse Universe

The Inverse Universe completely reimagines the original color for something new.



90, 8.321, 198.927



98, 10.367, 198.829



87, 7.460, 256.843



47, 4.536, 198.984



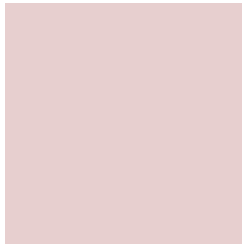
66, 38.337, 196.412



18, 16.088, 196.408

Previews

White Background



This preview shows how the CIELCh color 85, 8.891, 20.010 looks on a white background.

Color Contrast Check

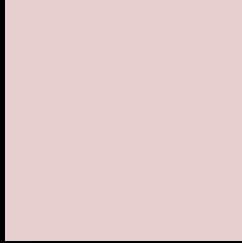
Large Text (above 18pt) WCAG AA × Fail

Any Text WCAG AA × Fail

Large Text (above 18pt) WCAG AAA × Fail

Any Text WCAG AAA × Fail

Black Background



This preview shows how the CIE LCh color 85, 8.891, 20.010 looks on a black background.

Color Contrast Check

Large Text (above 18pt) WCAG AA ✓ Pass

Any Text WCAG AA ✓ Pass

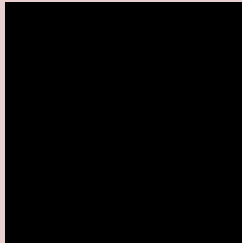
Large Text (above 18pt) WCAG AAA ✓ Pass

Any Text WCAG AAA ✓ Pass

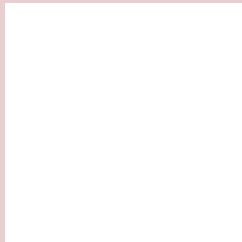
If you want to check with other color combinations, try the [Color Contrast Checker](#).

CIELCh 85, 8.891, 20.010

Background



This preview shows how black text looks on a background with the CIELCh color 85, 8.891, 20.010.

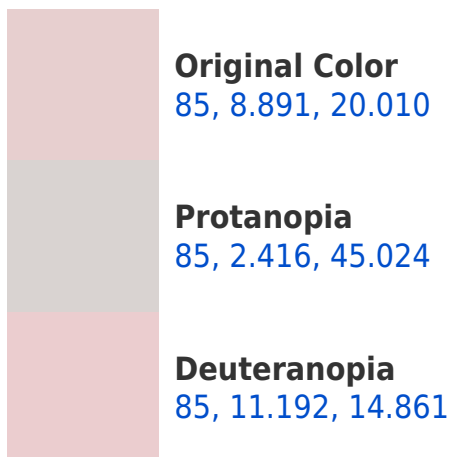


This preview shows how white text looks on a background with the CIELCh color 85, 8.891, 20.010.

Color Blindness Simulation

Color vision deficiency is a very complex topic, and I could not describe the different causes any better than Wikipedia does, so if you want to learn more, you should check out their [article about color blindness](#).

Dichromacy





Tritanopia
85, 13.198, 340.913

Trichromacy



Original Color
85, 8.891, 20.010

Protanomaly
85, 4.799, 25.903

Deuteranomaly
85, 10.030, 17.127

Tritanomaly
85, 10.862, 351.370

Monochromacy



Original Color
85, 8.891, 20.010

Achromatopsia
86, 0.010, 296.813

Achromatomaly
85, 3.282, 19.472

CSS Examples

Text

The CSS property to change the color of the text to CIELCh 85, 8.891, 20.010 is called "color". The color property can be set on classes, ids or directly on the HTML element.

This example shows how text in the color `rgb(231, 207, 207)` looks like.

```
.text, #text, p{  
    color:rgb(231, 207, 207)  
}
```

If you want to add a text shadow in that color use the text-shadow property, you can generate a text shadow directly with our [CSS Text Shadow Generator](#).

Here you see how black text with a 4 pixel rgb(231, 207, 207) colored shadow looks like.

```
.shadow{ text-shadow: 4px 4px 2px rgb(231, 207, 207) }
```

Border

The CSS property to change the border of an element to CIELCh 85, 8.891, 20.010 is called "border". The border property can be set on classes, ids or directly on the HTML element.

This example shows the color as border, it can be applied via the CSS property "border" or "border-color".

```
.border, #border, table{ border:4px solid rgb(231, 207, 207) }
```

If only the border color should be changed use the property `border-color`.

```
.border{ border-color:rgb(231, 207, 207) }
```

If you want to add a box shadow in that color use:

Here you see how a box with a 4 pixel `rgb(231, 207, 207)` colored shadow looks like.

```
.boxshadow{ -moz-box-shadow:4px 4px 4px  
4px rgb(231, 207, 207); -webkit-box-  
shadow:4px 4px 4px 4px rgb(231, 207, 207);  
box-shadow:4px 4px 4px 4px rgb(231, 207,  
207) }
```

Background

The CSS property to change the background color of an element to CIELCh 85, 8.891, 20.010 is called "background". The background property can be set on classes, ids or directly on the HTML element.

```
.background, #background, body{  
background: rgb(231, 207, 207) }
```

If only the background color should be changed can be used:

```
.background{ background-color: rgb(231,  
207, 207) }
```

This example shows the color as background, it is applied via the CSS property "background".

To optimize and compress your CSS code, you can use our [online CSS compressor and optimizer](#) based on csstidy. If you want to create a linear or radial gradient as background or border, check our [CSS Gradient Generator](#).

Hey! You found this booklet interesting? Support Converting Colors with the new Membership Option!

The pro membership hides all ads, plus gives you double the colors in the color bucket, and more awesome pro features!

[Learn more, Memberships starting at \\$2.50/m!](#)

**Follow me
on Twitter!**

@ConvertingColor