

Converting Colors

CIELCh(85, 9.551, 357.495)

Have a look what the booklet for
CIELCh(85, 9.551, 357.495) contains.

CIELCh(85, 9.543, 357.490)	3
<i>Conversions</i>	4
<i>Details</i>	6
<i>Harmonies</i>	11
<i>Previews</i>	20
<i>Color Blindness Simulation</i>	23
<i>CSS Examples</i>	26

Color

CIELCh(85, 9.543, 357.490)

Conversions

Conversions Part 1

Format	Color
Hex	E6CED5
RGB	230, 206, 213
RGB Percent	90%, 81%, 84%
CMY	0.0967, 0.1908, 0.1634
CMYK	0.00, 0.10, 0.07, 0.10
HSL	343°, 33%, 86%
HSV	343°, 10%, 90%
XYZ	66.9504, 66.0070, 72.3891
YIQ	213.9740, 12.0570, 7.2650

Conversions

Conversions Part 2

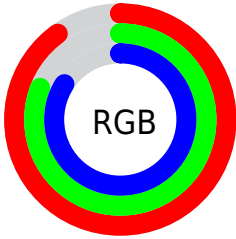
Format	Color
R _Y B	230, 206, 213
Decimal	15126229
CIE Lab	85.00, 9.53, -0.42
CIE LCh	85, 9.543, 357.490
Yxy	66.0070, 0.3260, 0.3214
Android (android.graphics.Color)	4293316309 (0xFFE6CED5)
YUV	213.9740, -0.4802, 14.0548
Hunter-Lab	81.2447, 4.9162, 4.0438

Details

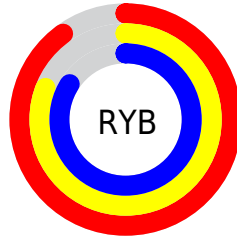
The CIELCh color $85, 9.543, 357.490$ is a light color, and the websafe version is hex `CCCCCC`. A complement of this color would be $90, 9.250, 175.639$, and the grayscale version is $86, 0.010, 296.813$.

A 20% lighter version of the original color is $100, 0.012, 296.813$, and $65, 9.174, 359.047$ is the 20% darker color. If you saturate the color by 10%, you get $79, 19.070, 358.639$, and if you desaturate by 10%, it is $91, 0.382, 355.191$.

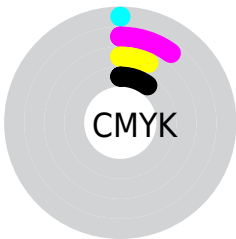
Distribution



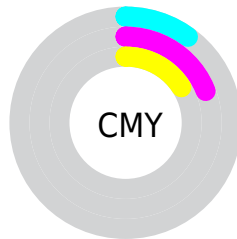
- Red (90%)
- Green (81%)
- Blue (84%)



- Red (90%)
- Yellow (81%)
- Blue (84%)



- Cyan (0%)
- Magenta (10%)
- Yellow (7%)
- Black (10%)



- Cyan (10%)
- Magenta (19%)
- Yellow (16%)


Brightness & Saturation Gradients

These gradients show how the CIELCh color 85, 9.543, 357.490 changes by changing the brightness by 10 percent. The first figure shows a shift by +10% for each color and the second figure -10%.

Similar to the brightness gradients but the following saturation gradients show a change of the CIELCh color 85, 9.543, 357.490 by changing the saturation by 10% instead.

 85, 9.543, 357.490

 85, 9.543, 357.490

 100, 9.543,
357.490

 75, 9.543, 357.490

 65, 9.543, 357.490

 55, 9.543, 357.490

 45, 9.543, 357.490

 35, 9.543, 357.490

 25, 9.543, 357.490

 15, 9.543, 357.490

 5, 9.543, 357.490

 0, 9.543, 357.490

85, 9.543, 357.490

85, 9.543, 357.490

79, 19.070,
358.639

91, 0.382, 355.191

73, 28.876,
359.957

97, 8.367, 175.805

98, 8.406, 198.953

68, 38.782, 1.530

63, 48.511, 3.453

58, 57.674, 5.853

54, 65.827, 8.891

51, 72.590, 12.742

50, 77.856, 17.518

49, 81.954, 22.762

Harmonies

Complementary

The Complementary color scheme is a pair of colors which are on the opposite of each other on the color wheel.



85, 9.543, 357.490



90, 9.250, 175.639

Rectangle

The Rectangle color scheme consists of four colors that form a rectangle on the color wheel.



85, 9.543, 357.490



85, 9.543, 47.490



85, 9.543, 177.490



85, 9.543, 227.490

Sweetspot

The Sweet Spot groups the original color and five complimentary colors.



85, 9.541, 357.498



98, 2.938, 356.631



85, 14.033, 316.157



52, 2.231, 356.748



0, 0.000, 0.000



53, 0.007, 296.813

Same Dimension

The Same Dimension uses a secret algorithm to generate beautiful new colors.



85, 9.541, 357.498



91, 12.996, 357.789



86, 7.543, 39.206



45, 5.174, 357.393



37, 67.315, 21.715



7, 26.651, 8.968

Inverse Universe

The Inverse Universe completely reimagines the original color for something new.



85, 9.541, 357.498



91, 12.996, 357.789



88, 7.064, 219.868



45, 5.174, 357.393



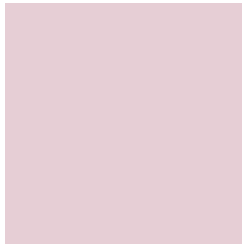
37, 67.315, 21.715



7, 26.651, 8.968

Previews

White Background



This preview shows how the CIELCh color 85, 9.543, 357.490 looks on a white background.

Color Contrast Check

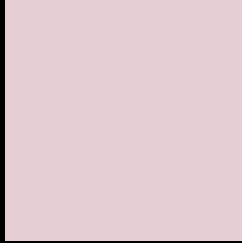
Large Text (above 18pt) WCAG AA × Fail

Any Text WCAG AA × Fail

Large Text (above 18pt) WCAG AAA × Fail

Any Text WCAG AAA × Fail

Black Background



This preview shows how the CIELCh color 85, 9.543, 357.490 looks on a black background.

Color Contrast Check

Large Text (above 18pt) WCAG AA ✓ Pass

Any Text WCAG AA ✓ Pass

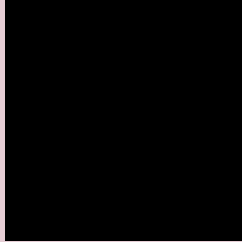
Large Text (above 18pt) WCAG AAA ✓ Pass

Any Text WCAG AAA ✓ Pass

If you want to check with other color combinations, try the [Color Contrast Checker](#).

CIELCh 85, 9.543, 357.490

Background



This preview shows how black text looks on a background with the CIELCh color 85, 9.543, 357.490.



This preview shows how white text looks on a background with the CIELCh color 85, 9.543, 357.490.

Color Blindness Simulation

Color vision deficiency is a very complex topic, and I could not describe the different causes any better than Wikipedia does, so if you want to learn more, you should check out their [article about color blindness](#).

Dichromacy





Tritanopia
85, 12.648, 338.737

Trichromacy



Original Color
85, 9.543, 357.490

Protanomaly
85, 5.401, 344.017

Deuteranomaly
85, 9.886, 358.355

Tritanomaly
85, 11.686, 344.566

Monochromacy



Original Color
85, 9.543, 357.490

Achromatopsia
86, 0.010, 296.813

Achromatomaly
85, 3.643, 353.929

CSS Examples

Text

The CSS property to change the color of the text to CIELCh 85, 9.543, 357.490 is called "color". The color property can be set on classes, ids or directly on the HTML element.

This example shows how text in the color `rgb(230, 206, 213)` looks like.

```
.text, #text, p{  
    color:rgb(230, 206, 213)  
}
```

If you want to add a text shadow in that color use the text-shadow property, you can generate a text shadow directly with our [CSS Text Shadow Generator](#).

Here you see how black text with a 4 pixel rgb(230, 206, 213) colored shadow looks like.

```
.shadow{ text-shadow: 4px 4px 2px rgb(230, 206, 213) }
```

Border

The CSS property to change the border of an element to CIELCh 85, 9.543, 357.490 is called "border". The border property can be set on classes, ids or directly on the HTML element.

This example shows the color as border, it can be applied via the CSS property "border" or "border-color".

```
.border, #border, table{ border:4px solid rgb(230, 206, 213) }
```

If only the border color should be changed use the property `border-color`.

```
.border{ border-color:rgb(230, 206, 213) }
```

If you want to add a box shadow in that color use:

Here you see how a box with a 4 pixel `rgb(230, 206, 213)` colored shadow looks like.

```
.boxshadow{ -moz-box-shadow:4px 4px 4px  
4px rgb(230, 206, 213); -webkit-box-  
shadow:4px 4px 4px 4px rgb(230, 206, 213);  
box-shadow:4px 4px 4px 4px rgb(230, 206,  
213) }
```

Background

The CSS property to change the background color of an element to CIELCh 85, 9.543, 357.490 is called "background". The background property can be set on classes, ids or directly on the HTML element.

```
.background, #background, body{  
background: rgb(230, 206, 213) }
```

If only the background color should be changed can be used:

```
.background{ background-color: rgb(230,  
206, 213) }
```

This example shows the color as background, it is applied via the CSS property "background".

To optimize and compress your CSS code, you can use our [online CSS compressor and optimizer](#) based on csstidy. If you want to create a linear or radial gradient as background or border, check our [CSS Gradient Generator](#).

Hey! You found this booklet interesting? Support Converting Colors with the new Membership Option!

The pro membership hides all ads, plus gives you double the colors in the color bucket, and more awesome pro features!

[Learn more, Memberships starting at \\$2.50/m!](#)

**Follow me
on Twitter!**

@ConvertingColor