

Converting Colors

CIELCh(85, 9.681, 60.480)

Have a look what the booklet for
CIELCh(85, 9.681, 60.480) contains.

CIELCh(85, 9.521, 60.948)	3
<i>Conversions</i>	4
<i>Details</i>	6
<i>Harmonies</i>	11
<i>Previews</i>	20
<i>Color Blindness Simulation</i>	23
<i>CSS Examples</i>	26

Color

CIELCh(85, 9.521, 60.948)

Conversions

Conversions Part 1

Format	Color
Hex	E4D1C5
RGB	228, 209, 197
RGB Percent	89%, 82%, 77%
CMY	0.1066, 0.1810, 0.2281
CMYK	0.00, 0.08, 0.14, 0.11
HSL	23°, 36%, 83%
HSV	23°, 14%, 89%
XYZ	64.7579, 66.0070, 62.0498
YIQ	213.3130, 15.1760, 0.2960

Conversions

Conversions Part 2

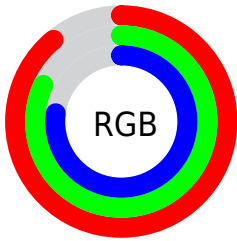
Format	Color
R _Y B	228, 217, 197
Decimal	14995909
CIE Lab	85.00, 4.62, 8.32
CIE LCh	85, 9.521, 60.948
Yxy	66.0070, 0.3359, 0.3423
Android (android.graphics.Color)	4293185989 (0xFFE4D1C5)
YUV	213.3130, -8.0423, 12.8805
Hunter-Lab	81.2447, 0.0990, 11.5892

Details

The CIELCh color $85, 9.521, 60.948$ is a light color, and the websafe version is hex `CCCCCC`. A complement of this color would be $85, 8.973, 243.935$, and the grayscale version is $85, 0.010, 296.813$.

A 20% lighter version of the original color is $100, 0.496, 109.985$, and $65, 9.536, 63.768$ is the 20% darker color. If you saturate the color by 10%, you get $81, 17.073, 60.032$, and if you desaturate by 10%, it is $89, 2.440, 61.789$.

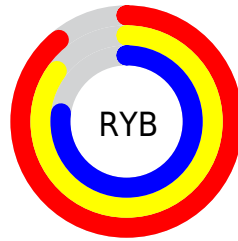
Distribution



Red (89%)

Green (82%)

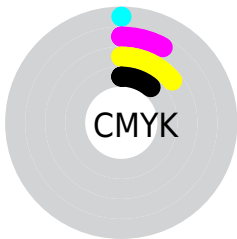
Blue (77%)



Red (89%)

Yellow (85%)

Blue (77%)

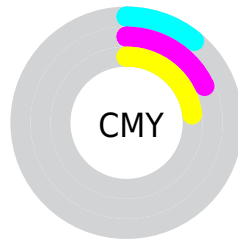


Cyan (0%)

Magenta (8%)

Yellow (14%)

Black (11%)



Cyan (11%)

Magenta (18%)

Yellow (23%)

Brightness & Saturation Gradients

These gradients show how the CIELCh color 85, 9.521, 60.948 changes by changing the brightness by 10 percent. The first figure shows a shift by +10% for each color and the second figure -10%.

Similar to the brightness gradients but the following saturation gradients show a change of the CIELCh color 85, 9.521, 60.948 by changing the saturation by 10% instead.



85, 9.521, 60.948

85, 9.521, 60.948

81, 17.073, 60.032

89, 2.440, 61.789

77, 25.137, 59.123

93, 4.217, 243.098

73, 33.736, 58.258

97, 8.038, 214.864

70, 42.856, 57.442

98, 9.241, 198.893

66, 52.402, 56.659

63, 62.119, 55.836

60, 71.425, 54.793

57, 79.201, 53.145

56, 83.145, 51.785

Harmonies

Complementary

The Complementary color scheme is a pair of colors which are on the opposite of each other on the color wheel.



85, 9.521, 60.948



85, 8.973, 243.935

Rectangle

The Rectangle color scheme consists of four colors that form a rectangle on the color wheel.



85, 9.521, 60.948



85, 9.521, 110.948



85, 9.521, 240.948



85, 9.521, 290.948

Sweetspot

The Sweet Spot groups the original color and five complimentary colors.



85, 9.521, 60.964



98, 2.971, 61.769



83, 15.161, 338.868



52, 2.117, 61.724



0, 0.000, 0.000



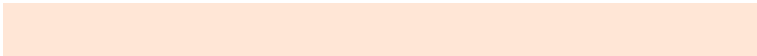
53, 0.007, 296.813

Same Dimension

The Same Dimension uses a secret algorithm to generate beautiful new colors.



85, 9.521, 60.964



93, 12.369, 60.732



89, 14.245, 103.526



46, 3.945, 61.343



44, 68.904, 52.405



11, 21.379, 48.685

Inverse Universe

The Inverse Universe completely reimagines the original color for something new.



85, 8.973, 243.935



93, 11.517, 244.255



81, 14.577, 286.575



46, 3.792, 243.446



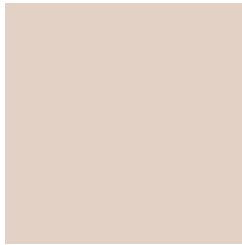
45, 43.861, 270.408



11, 16.444, 260.942

Previews

White Background



This preview shows how the CIELCh color 85, 9.521, 60.948 looks on a white background.

Color Contrast Check

Large Text (above 18pt) WCAG AA × Fail

Any Text WCAG AA × Fail

Large Text (above 18pt) WCAG AAA × Fail

Any Text WCAG AAA × Fail

Black Background



This preview shows how the CIELCh color 85, 9.521, 60.948 looks on a black background.

Color Contrast Check

Large Text (above 18pt) WCAG AA ✓ Pass

Any Text WCAG AA ✓ Pass

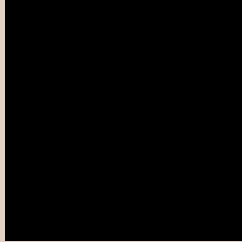
Large Text (above 18pt) WCAG AAA ✓ Pass

Any Text WCAG AAA ✓ Pass

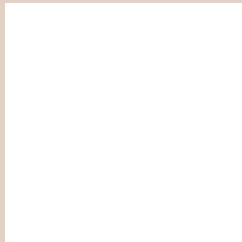
If you want to check with other color combinations, try the [Color Contrast Checker](#).

CIELCh 85, 9.521, 60.948

Background



This preview shows how black text looks on a background with the CIELCh color 85, 9.521, 60.948.



This preview shows how white text looks on a background with the CIELCh color 85, 9.521, 60.948.

Color Blindness Simulation

Color vision deficiency is a very complex topic, and I could not describe the different causes any better than Wikipedia does, so if you want to learn more, you should check out their [article about color blindness](#).

Dichromacy



Original Color

85, 9.521, 60.948

Protanopia

85, 7.768, 89.902

Deuteranopia

85, 13.028, 36.518



Tritanopia
85, 12.648, 338.737

Trichromacy



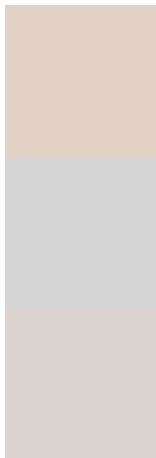
Original Color
85, 9.521, 60.948

Protanomaly
85, 7.941, 78.389

Deuteranomaly
85, 11.377, 41.617

Tritanomaly
85, 9.364, 0.466

Monochromacy



Original Color
85, 9.521, 60.948

Achromatopsia
85, 0.010, 296.813

Achromatomaly
85, 3.296, 58.844

CSS Examples

Text

The CSS property to change the color of the text to CIELCh 85, 9.521, 60.948 is called "color". The color property can be set on classes, ids or directly on the HTML element.

This example shows how text in the color `rgb(228, 209, 197)` looks like.

```
.text, #text, p{  
    color:rgb(228, 209, 197)  
}
```

If you want to add a text shadow in that color use the text-shadow property, you can generate a text shadow directly with our [CSS Text Shadow Generator](#).

Here you see how black text with a 4 pixel rgb(228, 209, 197) colored shadow looks like.

```
.shadow{ text-shadow: 4px 4px 2px rgb(228, 209, 197) }
```

Border

The CSS property to change the border of an element to CIELCh 85, 9.521, 60.948 is called "border". The border property can be set on classes, ids or directly on the HTML element.

This example shows the color as border, it can be applied via the CSS property "border" or "border-color".

```
.border, #border, table{ border:4px solid rgb(228, 209, 197) }
```

If only the border color should be changed use the property `border-color`.

```
.border{ border-color:rgb(228, 209, 197) }
```

If you want to add a box shadow in that color use:

Here you see how a box with a 4 pixel `rgb(228, 209, 197)` colored shadow looks like.

```
.boxshadow{ -moz-box-shadow:4px 4px 4px  
4px rgb(228, 209, 197); -webkit-box-  
shadow:4px 4px 4px 4px rgb(228, 209, 197);  
box-shadow:4px 4px 4px 4px rgb(228, 209,  
197) }
```

Background

The CSS property to change the background color of an element to CIELCh 85, 9.521, 60.948 is called "background". The background property can be set on classes, ids or directly on the HTML element.

```
.background, #background, body{  
background: rgb(228, 209, 197) }
```

If only the background color should be changed can be used:

```
.background{ background-color: rgb(228,  
209, 197) }
```

This example shows the color as background, it is applied via the CSS property "background".

To optimize and compress your CSS code, you can use our [online CSS compressor and optimizer](#) based on csstidy. If you want to create a linear or radial gradient as background or border, check our [CSS Gradient Generator](#).

Hey! You found this booklet interesting? Support Converting Colors with the new Membership Option!

The pro membership hides all ads, plus gives you double the colors in the color bucket, and more awesome pro features!

[Learn more, Memberships starting at \\$2.50/m!](#)

**Follow me
on Twitter!**

@ConvertingColor