

Converting Colors

CIELCh(85, 9.886, 41.810)

Have a look what the booklet for
CIELCh(85, 9.886, 41.810) contains.

| | |
|--|----|
| CIELCh(85, 10.081, 41.256) | 3 |
| <i>Conversions</i> | 4 |
| <i>Details</i> | 6 |
| <i>Harmonies</i> | 11 |
| <i>Previews</i> | 20 |
| <i>Color Blindness Simulation</i> | 23 |
| <i>CSS Examples</i> | 26 |

Color

CIELCh(85, 10.081, 41.256)

Conversions

Conversions Part 1

| Format | Color |
|-------------|---------------------------|
| Hex | E8CFC8 |
| RGB | 232, 207, 200 |
| RGB Percent | 91%, 81%, 78% |
| CMY | 0.0899, 0.1879, 0.2154 |
| CMYK | 0.00, 0.11, 0.14, 0.09 |
| HSL | 13°, 41%, 85% |
| HSV | 13°, 14%, 91% |
| XYZ | 66.0715, 66.0070, 63.9498 |
| YIQ | 213.6770, 17.1470, 3.1230 |

Conversions

Conversions Part 2

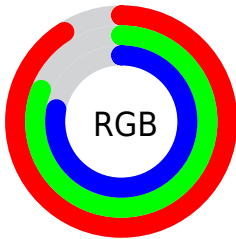
| Format | Color |
|-------------------------------------|-------------------------------|
| R _Y B | 232, 209, 200 |
| Decimal | 15257544 |
| CIE Lab | 85.00, 7.58, 6.65 |
| CIE LCh | 85, 10.081, 41.256 |
| Yxy | 66.0070, 0.3371, 0.3367 |
| Android (android.graphics.Color) | 4293447624 (0xFFE8CFC8) |
| YUV | 213.6770, -6.7428, 16.0693 |
| Hunter-Lab | 81.2447, 2.9853, 10.2026 |

Details

The CIELCh color **85, 10.081, 41.256** is a light color, and the websafe version is hex **CCCCCC**. A complement of this color would be **88, 9.240, 222.321**, and the grayscale version is **86, 0.010, 296.813**.

A 20% lighter version of the original color is **100, 0.012, 296.813**, and **65, 10.002, 42.829** is the 20% darker color. If you saturate the color by 10%, you get **80, 18.126, 41.153**, and if you desaturate by 10%, it is **90, 2.658, 41.351**.

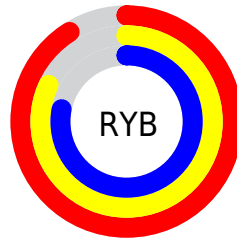
Distribution



Red (91%)

Green (81%)

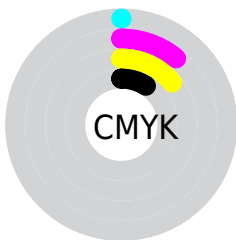
Blue (78%)



Red (91%)

Yellow (82%)

Blue (78%)

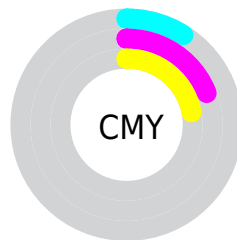


Cyan (0%)

Magenta (11%)

Yellow (14%)

Black (9%)



Cyan (9%)

Magenta (19%)

Yellow (22%)


Brightness & Saturation Gradients

These gradients show how the CIELCh color 85, 10.081, 41.256 changes by changing the brightness by 10 percent. The first figure shows a shift by +10% for each color and the second figure -10%.

Similar to the brightness gradients but the following saturation gradients show a change of the CIELCh color 85, 10.081, 41.256 by changing the saturation by 10% instead.

 85, 10.081, 41.256

 85, 10.081, 41.256

 100, 10.081,
41.256

 75, 10.081, 41.256

 65, 10.081, 41.256

 55, 10.081, 41.256

 45, 10.081, 41.256

 35, 10.081, 41.256

 25, 10.081, 41.256

 15, 10.081, 41.256

 5, 10.081, 41.256

 0, 10.081, 41.256

85, 10.081, 41.256

85, 10.081, 41.256

80, 18.126, 41.153

90, 2.658, 41.351

75, 26.845, 41.154

95, 4.198, 222.043

71, 36.261, 41.319

98, 7.828, 198.995

66, 46.356, 41.683

62, 57.027, 42.259

58, 68.011, 43.005

55, 78.700, 43.728

53, 87.763, 43.922

51, 92.120, 43.737

Harmonies

Complementary

The Complementary color scheme is a pair of colors which are on the opposite of each other on the color wheel.



85, 10.081, 41.256



88, 9.240, 222.321

Rectangle

The Rectangle color scheme consists of four colors that form a rectangle on the color wheel.



85, 10.081, 41.256



85, 10.081, 91.256



85, 10.081, 221.256



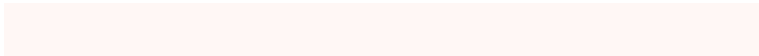
85, 10.081, 271.256

Sweetspot

The Sweet Spot groups the original color and five complimentary colors.



85, 10.080, 41.271



98, 3.032, 41.358



84, 17.550, 331.979



52, 2.162, 41.370



0, 0.000, 0.000



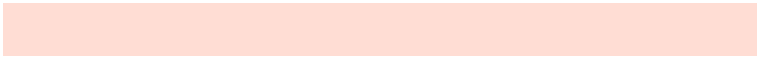
53, 0.007, 296.813

Same Dimension

The Same Dimension uses a secret algorithm to generate beautiful new colors.



85, 10.080, 41.271



91, 13.597, 41.223



89, 12.359, 93.217



46, 4.116, 41.338



40, 76.071, 44.151



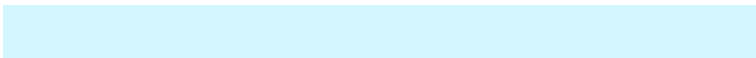
9, 24.659, 35.414

Inverse Universe

The Inverse Universe completely reimagines the original color for something new.



88, 9.240, 222.321



95, 12.183, 222.491



84, 12.425, 276.756



48, 3.883, 222.139



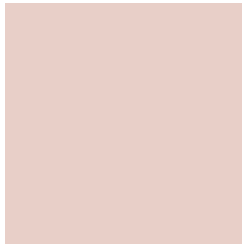
55, 34.364, 239.592



15, 14.470, 232.641

Previews

White Background



This preview shows how the CIELCh color 85, 10.081, 41.256 looks on a white background.

Color Contrast Check

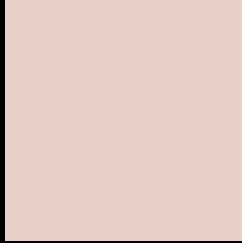
Large Text (above 18pt) WCAG AA × Fail

Any Text WCAG AA × Fail

Large Text (above 18pt) WCAG AAA × Fail

Any Text WCAG AAA × Fail

Black Background



This preview shows how the CIELCh color 85, 10.081, 41.256 looks on a black background.

Color Contrast Check

Large Text (above 18pt) WCAG AA ✓ Pass

Any Text WCAG AA ✓ Pass

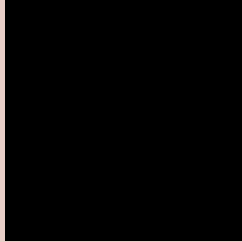
Large Text (above 18pt) WCAG AAA ✓ Pass

Any Text WCAG AAA ✓ Pass

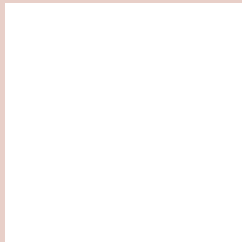
If you want to check with other color combinations, try the [Color Contrast Checker](#).

CIELCh 85, 10.081, 41.256

Background



This preview shows how black text looks on a background with the CIELCh color 85, 10.081, 41.256.

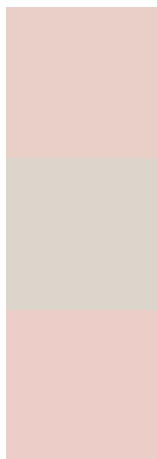


This preview shows how white text looks on a background with the CIELCh color 85, 10.081, 41.256.

Color Blindness Simulation

Color vision deficiency is a very complex topic, and I could not describe the different causes any better than Wikipedia does, so if you want to learn more, you should check out their [article about color blindness](#).

Dichromacy



Original Color

85, 10.081, 41.256

Protanopia

85, 5.191, 84.493

Deuteranopia

85, 12.344, 32.430



Tritanopia
85, 14.068, 343.873

Trichromacy



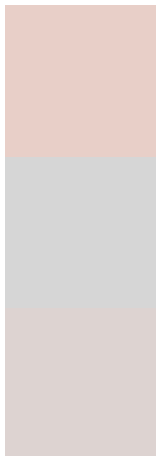
Original Color
85, 10.081, 41.256

Protanomaly
85, 6.380, 60.598

Deuteranomaly
85, 11.361, 36.126

Tritanomaly
85, 11.457, 358.822

Monochromacy



Original Color
85, 10.081, 41.256

Achromatopsia
86, 0.010, 296.813

Achromatomaly
85, 3.800, 35.503

CSS Examples

Text

The CSS property to change the color of the text to CIELCh 85, 10.081, 41.256 is called "color". The color property can be set on classes, ids or directly on the HTML element.

This example shows how text in the color `rgb(232, 207, 200)` looks like.

```
.text, #text, p{  
    color:rgb(232, 207, 200)  
}
```

If you want to add a text shadow in that color use the text-shadow property, you can generate a text shadow directly with our [CSS Text Shadow Generator](#).

Here you see how black text with a 4 pixel rgb(232, 207, 200) colored shadow looks like.

```
.shadow{ text-shadow: 4px 4px 2px rgb(232, 207, 200) }
```

Border

The CSS property to change the border of an element to CIELCh 85, 10.081, 41.256 is called "border". The border property can be set on classes, ids or directly on the HTML element.

This example shows the color as border, it can be applied via the CSS property "border" or "border-color".

```
.border, #border, table{ border:4px solid rgb(232, 207, 200) }
```

If only the border color should be changed use the property border-color.

```
.border{ border-color:rgb(232, 207, 200) }
```

If you want to add a box shadow in that color use:

Here you see how a box with a 4 pixel rgb(232, 207, 200) colored shadow looks like.

```
.boxshadow{ -moz-box-shadow:4px 4px 4px  
4px rgb(232, 207, 200); -webkit-box-  
shadow:4px 4px 4px 4px rgb(232, 207, 200);  
box-shadow:4px 4px 4px 4px rgb(232, 207,  
200) }
```

Background

The CSS property to change the background color of an element to CIELCh 85, 10.081, 41.256 is called "background". The background property can be set on classes, ids or directly on the HTML element.

```
.background, #background, body{  
background: rgb(232, 207, 200) }
```

If only the background color should be changed can be used:

```
.background{ background-color: rgb(232,  
207, 200) }
```

This example shows the color as background, it is applied via the CSS property "background".

To optimize and compress your CSS code, you can use our [online CSS compressor and optimizer](#) based on csstidy. If you want to create a linear or radial gradient as background or border, check our [CSS Gradient Generator](#).

Hey! You found this booklet interesting? Support Converting Colors with the new Membership Option!

The pro membership hides all ads, plus gives you double the colors in the color bucket, and more awesome pro features!

[Learn more, Memberships starting at \\$2.50/m!](#)

**Follow me
on Twitter!**

@ConvertingColor