

Converting Colors

CIELCh(85, 9.964, 4.808)

Have a look what the booklet for
CIELCh(85, 9.964, 4.808) contains.

CIELCh(85, 9.930, 4.847)	3
<i>Conversions</i>	4
<i>Details</i>	6
<i>Harmonies</i>	11
<i>Previews</i>	20
<i>Color Blindness Simulation</i>	23
<i>CSS Examples</i>	26

Color

CIELCh(85, 9.930, 4.847)

Conversions

Conversions Part 1

Format	Color
Hex	E8CED3
RGB	232, 206, 211
RGB Percent	91%, 81%, 83%
CMY	0.0902, 0.1921, 0.1725
CMYK	0.00, 0.11, 0.09, 0.09
HSL	348°, 36%, 86%
HSV	348°, 11%, 91%
XYZ	67.1134, 66.0070, 70.8366
YIQ	214.3440, 13.8910, 7.0670

Conversions

Conversions Part 2

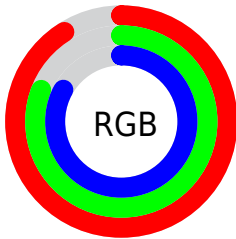
Format	Color
RYB	232, 206, 211
Decimal	15257299
CIELab	85.00, 9.89, 0.84
CIELCh	85, 9.930, 4.847
Yxy	66.0070, 0.3291, 0.3236
Android (android.graphics.Color)	4293447379 (0xFFE8CED3)
YUV	214.3440, -1.6486, 15.4843
Hunter-Lab	81.2447, 5.2742, 5.1769

Details

The CIELCh color **85, 9.930, 4.847** is a light color, and the websafe version is hex **FFCCCC**. A complement of this color would be **90, 9.486, 182.910**, and the grayscale version is **86, 0.010, 296.813**.

A 20% lighter version of the original color is **100, 0.012, 296.813**, and **65, 9.759, 3.877** is the 20% darker color. If you saturate the color by 10%, you get **79, 19.282, 6.015**, and if you desaturate by 10%, it is **91, 1.042, 3.407**.

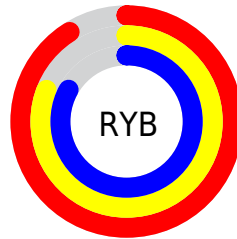
Distribution



Red (91%)

Green (81%)

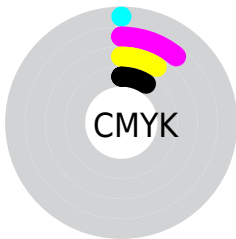
Blue (83%)



Red (91%)

Yellow (81%)

Blue (83%)

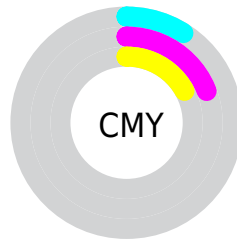


Cyan (0%)

Magenta (11%)

Yellow (9%)

Black (9%)



Cyan (9%)

Magenta (19%)

Yellow (17%)

Brightness & Saturation Gradients

These gradients show how the CIELCh color 85, 9.930, 4.847 changes by changing the brightness by 10 percent. The first figure shows a shift by +10% for each color and the second figure -10%.

Similar to the brightness gradients but the following saturation gradients show a change of the CIELCh color 85, 9.930, 4.847 by changing the saturation by 10% instead.

85, 9.930, 4.847

85, 9.930, 4.847

100, 9.930, 4.847

75, 9.930, 4.847

65, 9.930, 4.847

55, 9.930, 4.847

45, 9.930, 4.847

35, 9.930, 4.847

25, 9.930, 4.847

15, 9.930, 4.847

5, 9.930, 4.847

0, 9.930, 4.847

85, 9.930, 4.847

85, 9.930, 4.847

79, 19.282, 6.015

91, 1.042, 3.407

73, 29.036, 7.385

98, 7.359, 183.211

67, 39.045, 9.058

98, 7.852, 198.993

62, 49.066, 11.143

58, 58.755, 13.779

54, 67.719, 17.121

51, 75.637, 21.292

50, 82.408, 26.261

49, 87.647, 30.886

Harmonies

Complementary

The Complementary color scheme is a pair of colors which are on the opposite of each other on the color wheel.



85, 9.930, 4.847



90, 9.486, 182.910

Rectangle

The Rectangle color scheme consists of four colors that form a rectangle on the color wheel.



85, 9.930, 4.847



85, 9.930, 54.847



85, 9.930, 184.847



85, 9.930, 234.847

Sweetspot

The Sweet Spot groups the original color and five complimentary colors.



85, 9.928, 4.856



98, 2.809, 3.900



85, 15.600, 319.294



52, 2.133, 4.021



0, 0.000, 0.000



53, 0.007, 296.813

Same Dimension

The Same Dimension uses a secret algorithm to generate beautiful new colors.



85, 9.928, 4.856



91, 12.498, 5.061



87, 7.882, 50.761



45, 4.965, 4.666



37, 71.380, 29.886



7, 26.674, 13.743

Inverse Universe

The Inverse Universe completely reimagines the original color for something new.



85, 9.928, 4.856



91, 12.498, 5.061



88, 7.413, 232.498



45, 4.965, 4.666



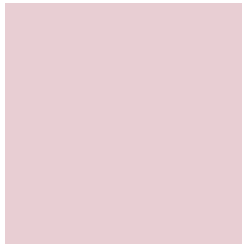
37, 71.380, 29.886



7, 26.674, 13.743

Previews

White Background



This preview shows how the CIE LCh color 85, 9.930, 4.847 looks on a white background.

Color Contrast Check

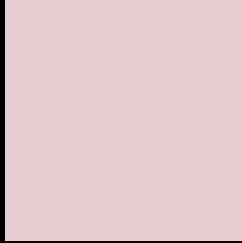
Large Text (above 18pt) WCAG AA × Fail

Any Text WCAG AA × Fail

Large Text (above 18pt) WCAG AAA × Fail

Any Text WCAG AAA × Fail

Black Background



This preview shows how the CIELCh color 85, 9.930, 4.847 looks on a black background.

Color Contrast Check

Large Text (above 18pt) WCAG AA ✓ Pass

Any Text WCAG AA ✓ Pass

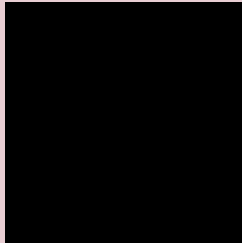
Large Text (above 18pt) WCAG AAA ✓ Pass

Any Text WCAG AAA ✓ Pass

If you want to check with other color combinations, try the [Color Contrast Checker](#).

CIELCh 85, 9.930, 4.847

Background



This preview shows how black text looks on a background with the CIELCh color 85, 9.930, 4.847.



This preview shows how white text looks on a background with the CIELCh color 85, 9.930, 4.847.

Color Blindness Simulation

Color vision deficiency is a very complex topic, and I could not describe the different causes any better than Wikipedia does, so if you want to learn more, you should check out their [article about color blindness](#).

Dichromacy



Original Color

85, 9.930, 4.847

Protanopia

85, 2.419, 338.641

Deuteranopia

85, 10.291, 5.432



Tritanopia
85, 13.198, 340.913

Trichromacy



Original Color

85, 9.930, 4.847

Protanomaly

85, 5.197, 355.876

Deuteranomaly

85, 10.291, 5.432

Tritanomaly

85, 12.014, 348.739

Monochromacy



Original Color

85, 9.930, 4.847

Achromatopsia

86, 0.010, 296.813

Achromatomaly

85, 3.797, 3.516

CSS Examples

Text

The CSS property to change the color of the text to CIELCh 85, 9.930, 4.847 is called "color". The color property can be set on classes, ids or directly on the HTML element.

This example shows how text in the color `rgb(232, 206, 211)` looks like.

```
.text, #text, p{  
    color:rgb(232, 206, 211)  
}
```

If you want to add a text shadow in that color use the text-shadow property, you can generate a text shadow directly with our [CSS Text Shadow Generator](#).

Here you see how black text with a 4 pixel rgb(232, 206, 211) colored shadow looks like.

```
.shadow{ text-shadow: 4px 4px 2px rgb(232, 206, 211) }
```

Border

The CSS property to change the border of an element to CIELCh 85, 9.930, 4.847 is called "border". The border property can be set on classes, ids or directly on the HTML element.

This example shows the color as border, it can be applied via the CSS property "border" or "border-color".

```
.border, #border, table{ border:4px solid rgb(232, 206, 211) }
```

If only the border color should be changed use the property `border-color`.

```
.border{ border-color:rgb(232, 206, 211) }
```

If you want to add a box shadow in that color use:

Here you see how a box with a 4 pixel `rgb(232, 206, 211)` colored shadow looks like.

```
.boxshadow{ -moz-box-shadow:4px 4px 4px  
4px rgb(232, 206, 211); -webkit-box-  
shadow:4px 4px 4px 4px rgb(232, 206, 211);  
box-shadow:4px 4px 4px 4px rgb(232, 206,  
211) }
```

Background

The CSS property to change the background color of an element to CIELCh 85, 9.930, 4.847 is called "background". The background property can be set on classes, ids or directly on the HTML element.

```
.background, #background, body{  
background: rgb(232, 206, 211) }
```

If only the background color should be changed can be used:

```
.background{ background-color: rgb(232,  
206, 211) }
```

This example shows the color as background, it is applied via the CSS property "background".

To optimize and compress your CSS code, you can use our [online CSS compressor and optimizer](#) based on csstidy. If you want to create a linear or radial gradient as background or border, check our [CSS Gradient Generator](#).

Hey! You found this booklet interesting? Support Converting Colors with the new Membership Option!

The pro membership hides all ads, plus gives you double the colors in the color bucket, and more awesome pro features!

[Learn more, Memberships starting at \\$2.50/m!](#)

**Follow me
on Twitter!**

@ConvertingColor