

# Converting Colors

CIELCh(86, 10.133, 57.464)

Have a look what the booklet for  
CIELCh(86, 10.133, 57.464) contains.

<b>CIELCh(86, 10.090, 58.122)</b> .....	3
<b><i>Conversions</i></b> .....	4
<b><i>Details</i></b> .....	6
<b><i>Harmonies</i></b> .....	11
<b><i>Previews</i></b> .....	20
<b><i>Color Blindness Simulation</i></b> .....	23
<b><i>CSS Examples</i></b> .....	26

# Color

**CIELCh(86, 10.090, 58.122)**

# Conversions

## Conversions Part 1

Format	Color
Hex	E8D3C7
RGB	232, 211, 199
RGB Percent	91%, 83%, 78%
CMY	0.0895, 0.1719, 0.2190
CMYK	0.00, 0.09, 0.14, 0.09
HSL	22°, 42%, 85%
HSV	22°, 14%, 91%
XYZ	66.9979, 67.9871, 63.7251
YIQ	215.9110, 16.3680, 0.7200

# Conversions

## Conversions Part 2

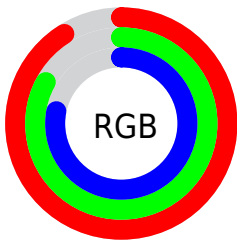
Format	Color
R <sub>Y</sub> B	232, 218, 199
Decimal	15258567
CIE Lab	86.00, 5.33, 8.57
CIE LCh	86, 10.090, 58.122
Yxy	67.9871, 0.3372, 0.3421
Android (android.graphics.Color)	4293448647 (0xFFE8D3C7)
YUV	215.9110, -8.3371, 14.1101
Hunter-Lab	82.4543, 0.7444, 11.8955

# Details

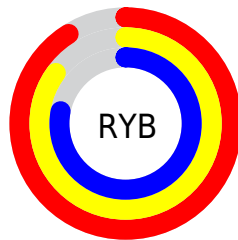
The CIELCh color **86, 10.090, 58.122** is a light color, and the websafe version is hex **CCCCCC**. A complement of this color would be **87, 9.432, 241.026**, and the grayscale version is **86, 0.010, 296.813**.

A 20% lighter version of the original color is **100, 0.012, 296.813**, and **66, 10.115, 60.601** is the 20% darker color. If you saturate the color by 10%, you get **82, 17.795, 57.299**, and if you desaturate by 10%, it is **90, 2.890, 58.904**.

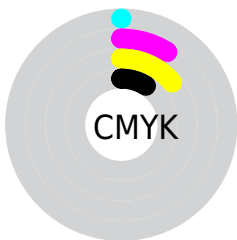
# Distribution



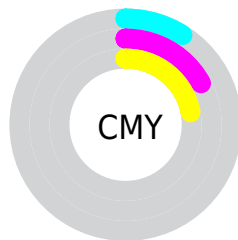
- Red (91%)
- Green (83%)
- Blue (78%)



- Red (91%)
- Yellow (85%)
- Blue (78%)



- Cyan (0%)
- Magenta (9%)
- Yellow (14%)
- Black (9%)



- Cyan (9%)
- Magenta (17%)
- Yellow (22%)

# Brightness & Saturation Gradients


These gradients show how the CIELCh color 86, 10.090, 58.122 changes by changing the brightness by 10 percent. The first figure shows a shift by +10% for each color and the second figure -10%.

Similar to the brightness gradients but the following saturation gradients show a change of the CIELCh color 86, 10.090, 58.122 by changing the saturation by 10% instead.




 86, 10.090, 58.122

 86, 10.090, 58.122

 100, 10.090,  
58.122

 76, 10.090, 58.122

 66, 10.090, 58.122

 56, 10.090, 58.122

 46, 10.090, 58.122

 36, 10.090, 58.122

 26, 10.090, 58.122

 16, 10.090, 58.122

 6, 10.090, 58.122

 0, 10.090, 58.122

86, 10.090, 58.122

86, 10.090, 58.122

82, 17.795, 57.299

90, 2.890, 58.904

78, 26.051, 56.496

95, 3.855, 240.135

74, 34.880, 55.754

98, 7.798, 198.997

70, 44.271, 55.079

66, 54.124, 54.455

63, 64.170, 53.807

60, 73.790, 52.939

57, 81.784, 51.436

56, 85.487, 50.311

# Harmonies

# Complementary

The Complementary color scheme is a pair of colors which are on the opposite of each other on the color wheel.



86, 10.090, 58.122



87, 9.432, 241.026

# Rectangle

The Rectangle color scheme consists of four colors that form a rectangle on the color wheel.



86, 10.090, 58.122



86, 10.090, 108.122



86, 10.090, 238.122



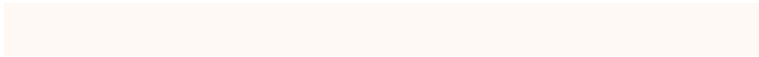
86, 10.090, 288.122

# Sweetspot

The Sweet Spot groups the original color and five complimentary colors.



86, 10.090, 58.138



98, 2.957, 58.912



84, 16.474, 337.399



52, 2.107, 58.874



0, 0.000, 0.000



53, 0.007, 296.813

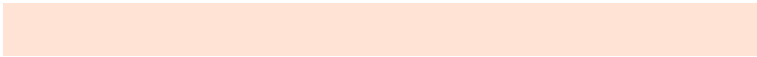


# Same Dimension

The Same Dimension uses a secret algorithm to generate beautiful new colors.



86, 10.090, 58.138



92, 13.149, 57.895



90, 14.609, 101.678



47, 4.001, 58.532



44, 70.563, 50.913



11, 22.854, 47.050



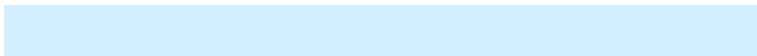


# Inverse Universe

The Inverse Universe completely reimagines the original color for something new.



87, 9.432, 241.026



93, 12.108, 241.379



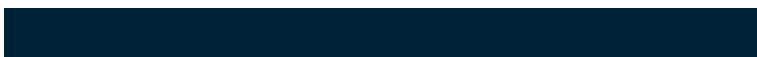
83, 14.919, 284.966



47, 3.833, 240.500



47, 42.365, 266.948

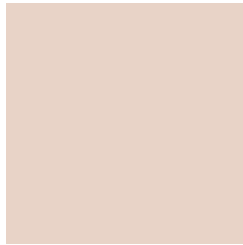


12, 16.483, 257.986



# Previews

## White Background



This preview shows how the CIELCh color 86, 10.090, 58.122 looks on a white background.

## Color Contrast Check

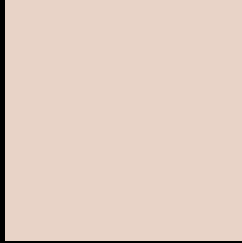
Large Text (above 18pt) WCAG AA × Fail

Any Text WCAG AA × Fail

Large Text (above 18pt) WCAG AAA × Fail

Any Text WCAG AAA × Fail

# Black Background



This preview shows how the CIELCh color 86, 10.090, 58.122 looks on a black background.

## Color Contrast Check

Large Text (above 18pt) WCAG AA ✓ Pass

Any Text WCAG AA ✓ Pass

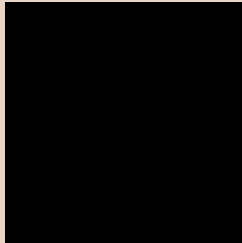
Large Text (above 18pt) WCAG AAA ✓ Pass

Any Text WCAG AAA ✓ Pass

If you want to check with other color combinations, try the [Color Contrast Checker](#).

# CIELCh 86, 10.090, 58.122

## Background



This preview shows how black text looks on a background with the CIELCh color 86, 10.090, 58.122.

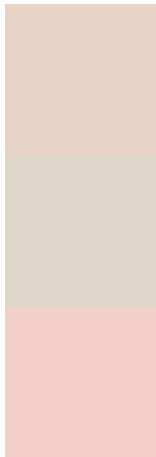


This preview shows how white text looks on a background with the CIELCh color 86, 10.090, 58.122.

# Color Blindness Simulation

Color vision deficiency is a very complex topic, and I could not describe the different causes any better than Wikipedia does, so if you want to learn more, you should check out their [article about color blindness](#).

## Dichromacy



### Original Color

86, 10.090, 58.122

### Protanopia

86, 7.402, 85.893

### Deuteranopia

86, 13.536, 38.152



**Tritanopia**  
86, 13.507, 339.178



# Trichromacy



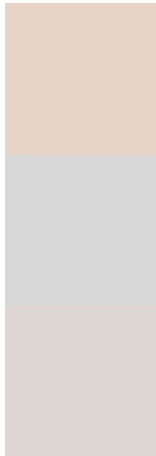
**Original Color**  
86, 10.090, 58.122

**Protanomaly**  
86, 8.341, 73.965

**Deuteranomaly**  
86, 11.918, 43.238

**Tritanomaly**  
86, 9.688, 1.226

# Monochromacy



**Original Color**  
86, 10.090, 58.122

**Achromatopsia**  
86, 0.010, 296.813

**Achromatomaly**  
86, 3.580, 55.122

# CSS Examples

## Text

The CSS property to change the color of the text to CIELCh 86, 10.090, 58.122 is called "color". The color property can be set on classes, ids or directly on the HTML element.

This example shows how text in the color `rgb(232, 211, 199)` looks like.

```
.text, #text, p{  
    color:rgb(232, 211, 199)  
}
```

If you want to add a text shadow in that color use the text-shadow property, you can generate a text shadow directly with our [CSS Text Shadow Generator](#).

Here you see how black text with a 4 pixel rgb(232, 211, 199) colored shadow looks like.

```
.shadow{ text-shadow: 4px 4px 2px rgb(232, 211, 199) }
```

## Border

The CSS property to change the border of an element to CIELCh 86, 10.090, 58.122 is called "border". The border property can be set on classes, ids or directly on the HTML element.

This example shows the color as border, it can be applied via the CSS property "border" or "border-color".

```
.border, #border, table{ border:4px solid rgb(232, 211, 199) }
```

If only the border color should be changed use the property `border-color`.

```
.border{ border-color:rgb(232, 211, 199) }
```

If you want to add a box shadow in that color use:

Here you see how a box with a 4 pixel `rgb(232, 211, 199)` colored shadow looks like.

```
.boxshadow{ -moz-box-shadow:4px 4px 4px  
4px rgb(232, 211, 199); -webkit-box-  
shadow:4px 4px 4px 4px rgb(232, 211, 199);  
box-shadow:4px 4px 4px 4px rgb(232, 211,  
199) }
```

# Background

The CSS property to change the background color of an element to CIELCh 86, 10.090, 58.122 is called "background". The background property can be set on classes, ids or directly on the HTML element.

```
.background, #background, body{  
background: rgb(232, 211, 199) }
```

If only the background color should be changed can be used:

```
.background{ background-color: rgb(232,  
211, 199) }
```

This example shows the color as background, it is applied via the CSS property "background".

To optimize and compress your CSS code, you can use our [online CSS compressor and optimizer](#) based on csstidy. If you want to create a linear or radial gradient as background or border, check our [CSS Gradient Generator](#).

Hey! You found this booklet interesting? Support Converting Colors with the new Membership Option!

The pro membership hides all ads, plus gives you double the colors in the color bucket, and more awesome pro features!

**[Learn more, Memberships starting at \\$2.50/m!](#)**

**Follow me  
on Twitter!**

@ConvertingColor