

Converting Colors

CIELCh(86, 10.226, 37.843)

Have a look what the booklet for
CIELCh(86, 10.226, 37.843) contains.

CIELCh(86, 10.216, 37.829)	3
<i>Conversions</i>	4
<i>Details</i>	6
<i>Harmonies</i>	11
<i>Previews</i>	20
<i>Color Blindness Simulation</i>	23
<i>CSS Examples</i>	26

Color

CIELCh(86, 10.216, 37.829)

Conversions

Conversions Part 1

Format	Color
Hex	ECD2CC
RGB	236, 210, 204
RGB Percent	93%, 82%, 80%
CMY	0.0762, 0.1781, 0.2016
CMYK	0.00, 0.11, 0.14, 0.08
HSL	11°, 45%, 86%
HSV	11°, 14%, 92%
XYZ	68.2433, 67.9871, 66.3928
YIQ	217.0900, 17.4220, 3.6460

Conversions

Conversions Part 2

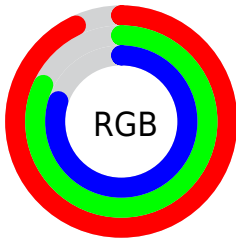
Format	Color
R _Y B	236, 211, 204
Decimal	15520460
CIE Lab	86.00, 8.07, 6.27
CIE LCh	86, 10.216, 37.829
Yxy	67.9871, 0.3368, 0.3355
Android (android.graphics.Color)	4293710540 (0xFFECD2CC)
YUV	217.0900, -6.4534, 16.5841
Hunter-Lab	82.4543, 3.4406, 9.9773

Details

The CIELCh color **86, 10.216, 37.829** is a light color, and the websafe version is hex **FFCCCC**. A complement of this color would be **89, 9.355, 218.465**, and the grayscale version is **87, 0.010, 296.813**.

A 20% lighter version of the original color is **100, 0.012, 296.813**, and **66, 10.120, 39.173** is the 20% darker color. If you saturate the color by 10%, you get **81, 18.499, 37.892**, and if you desaturate by 10%, it is **91, 2.582, 37.760**.

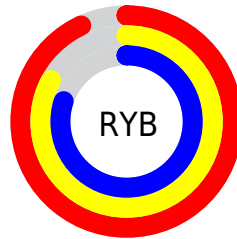
Distribution



Red (93%)

Green (82%)

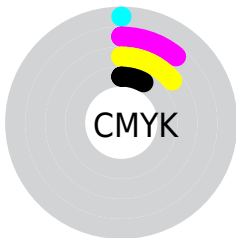
Blue (80%)



Red (93%)

Yellow (83%)

Blue (80%)

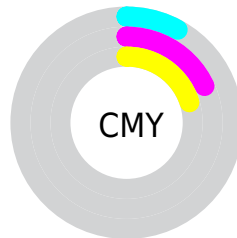


Cyan (0%)

Magenta (11%)

Yellow (14%)

Black (8%)



Cyan (8%)

Magenta (18%)

Yellow (20%)


Brightness & Saturation Gradients

These gradients show how the CIELCh color 86, 10.216, 37.829 changes by changing the brightness by 10 percent. The first figure shows a shift by +10% for each color and the second figure -10%.

Similar to the brightness gradients but the following saturation gradients show a change of the CIELCh color 86, 10.216, 37.829 by changing the saturation by 10% instead.

 86, 10.216, 37.829

 86, 10.216, 37.829

 100, 10.216,
37.829

 76, 10.216, 37.829

 66, 10.216, 37.829

 56, 10.216, 37.829

 46, 10.216, 37.829

 36, 10.216, 37.829

 26, 10.216, 37.829

 16, 10.216, 37.829

 6, 10.216, 37.829

 0, 10.216, 37.829

86, 10.216, 37.829

86, 10.216, 37.829

81, 18.499, 37.892

91, 2.582, 37.760

76, 27.479, 38.078

97, 4.460, 218.321

71, 37.176, 38.453

99, 6.658, 199.083

66, 47.559, 39.059

62, 58.514, 39.922

58, 69.766, 41.005

55, 80.693, 42.121

53, 89.926, 42.739

51, 94.397, 42.784

Harmonies

Complementary

The Complementary color scheme is a pair of colors which are on the opposite of each other on the color wheel.



86, 10.216, 37.829



89, 9.355, 218.465

Rectangle

The Rectangle color scheme consists of four colors that form a rectangle on the color wheel.



86, 10.216, 37.829



86, 10.216, 87.829



86, 10.216, 217.829



86, 10.216, 267.829

Sweetspot

The Sweet Spot groups the original color and five complimentary colors.



86, 10.215, 37.843



98, 3.084, 37.781



85, 17.906, 330.776



52, 2.199, 37.805



0, 0.000, 0.000



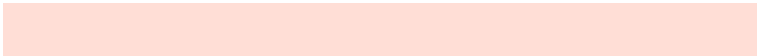
53, 0.007, 296.813

Same Dimension

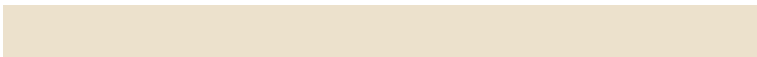
The Same Dimension uses a secret algorithm to generate beautiful new colors.



86, 10.215, 37.843



91, 12.971, 37.847



90, 11.916, 90.722



46, 4.187, 37.843



40, 77.089, 43.167



9, 25.108, 33.440

Inverse Universe

The Inverse Universe completely reimagines the original color for something new.



89, 9.355, 218.465



95, 11.672, 218.548



85, 11.921, 274.282



48, 3.944, 218.361



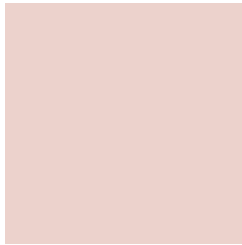
56, 33.799, 232.804



16, 14.418, 226.822

Previews

White Background



This preview shows how the CIELCh color 86, 10.216, 37.829 looks on a white background.

Color Contrast Check

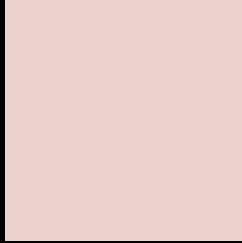
Large Text (above 18pt) WCAG AA × Fail

Any Text WCAG AA × Fail

Large Text (above 18pt) WCAG AAA × Fail

Any Text WCAG AAA × Fail

Black Background



This preview shows how the CIELCh color 86, 10.216, 37.829 looks on a black background.

Color Contrast Check

Large Text (above 18pt) WCAG AA ✓ Pass

Any Text WCAG AA ✓ Pass

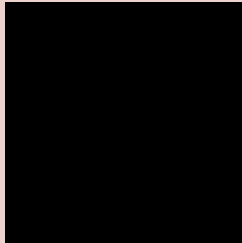
Large Text (above 18pt) WCAG AAA ✓ Pass

Any Text WCAG AAA ✓ Pass

If you want to check with other color combinations, try the [Color Contrast Checker](#).

CIELCh 86, 10.216, 37.829

Background



This preview shows how black text looks on a background with the CIELCh color 86, 10.216, 37.829.

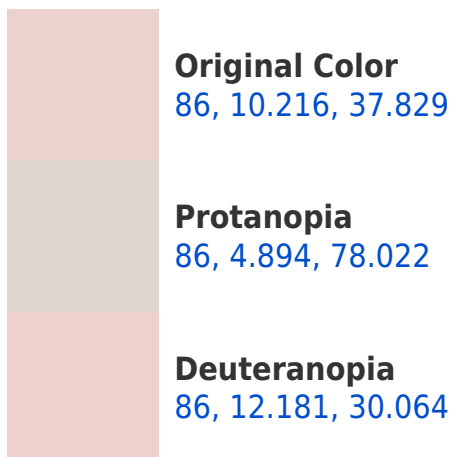


This preview shows how white text looks on a background with the CIELCh color 86, 10.216, 37.829.

Color Blindness Simulation

Color vision deficiency is a very complex topic, and I could not describe the different causes any better than Wikipedia does, so if you want to learn more, you should check out their [article about color blindness](#).

Dichromacy





Tritanopia
86, 14.032, 343.858

Trichromacy



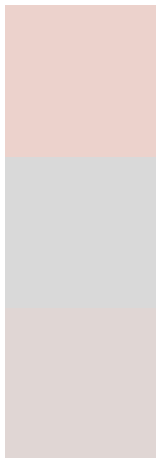
Original Color
86, 10.216, 37.829

Protanomaly
86, 6.334, 54.880

Deuteranomaly
86, 11.171, 33.597

Tritanomaly
86, 11.426, 358.806

Monochromacy



Original Color
86, 10.216, 37.829

Achromatopsia
87, 0.010, 296.813

Achromatomaly
86, 3.789, 35.502

CSS Examples

Text

The CSS property to change the color of the text to CIELCh 86, 10.216, 37.829 is called "color". The color property can be set on classes, ids or directly on the HTML element.

This example shows how text in the color `rgb(236, 210, 204)` looks like.

```
.text, #text, p{  
    color:rgb(236, 210, 204)  
}
```

If you want to add a text shadow in that color use the text-shadow property, you can generate a text shadow directly with our [CSS Text Shadow Generator](#).

Here you see how black text with a 4 pixel rgb(236, 210, 204) colored shadow looks like.

```
.shadow{ text-shadow: 4px 4px 2px rgb(236, 210, 204) }
```

Border

The CSS property to change the border of an element to CIELCh 86, 10.216, 37.829 is called "border". The border property can be set on classes, ids or directly on the HTML element.

This example shows the color as border, it can be applied via the CSS property "border" or "border-color".

```
.border, #border, table{ border:4px solid rgb(236, 210, 204) }
```

If only the border color should be changed use the property border-color.

```
.border{ border-color:rgb(236, 210, 204) }
```

If you want to add a box shadow in that color use:

Here you see how a box with a 4 pixel rgb(236, 210, 204) colored shadow looks like.

```
.boxshadow{ -moz-box-shadow:4px 4px 4px  
4px rgb(236, 210, 204); -webkit-box-  
shadow:4px 4px 4px 4px rgb(236, 210, 204);  
box-shadow:4px 4px 4px 4px rgb(236, 210,  
204) }
```

Background

The CSS property to change the background color of an element to CIELCh 86, 10.216, 37.829 is called "background". The background property can be set on classes, ids or directly on the HTML element.

```
.background, #background, body{  
background: rgb(236, 210, 204) }
```

If only the background color should be changed can be used:

```
.background{ background-color: rgb(236,  
210, 204) }
```

This example shows the color as background, it is applied via the CSS property "background".

To optimize and compress your CSS code, you can use our [online CSS compressor and optimizer](#) based on csstidy. If you want to create a linear or radial gradient as background or border, check our [CSS Gradient Generator](#).

Hey! You found this booklet interesting? Support Converting Colors with the new Membership Option!

The pro membership hides all ads, plus gives you double the colors in the color bucket, and more awesome pro features!

[Learn more, Memberships starting at \\$2.50/m!](#)

**Follow me
on Twitter!**

@ConvertingColor